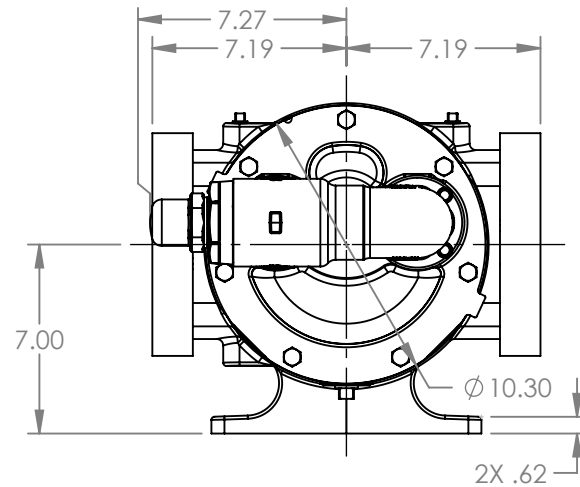
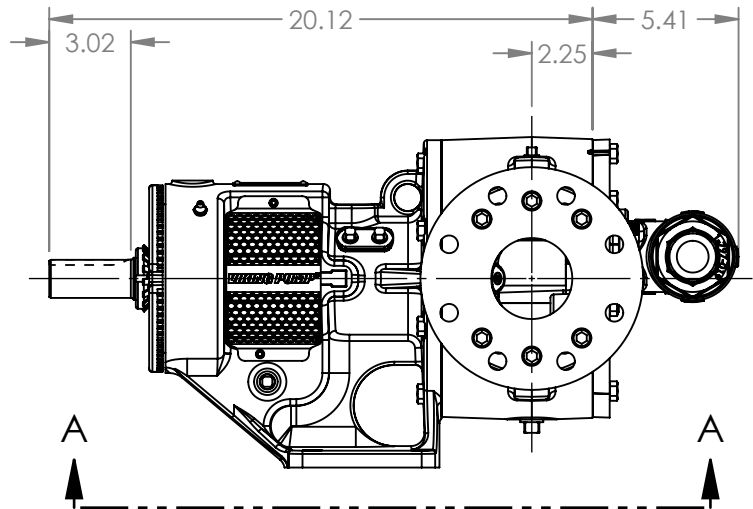
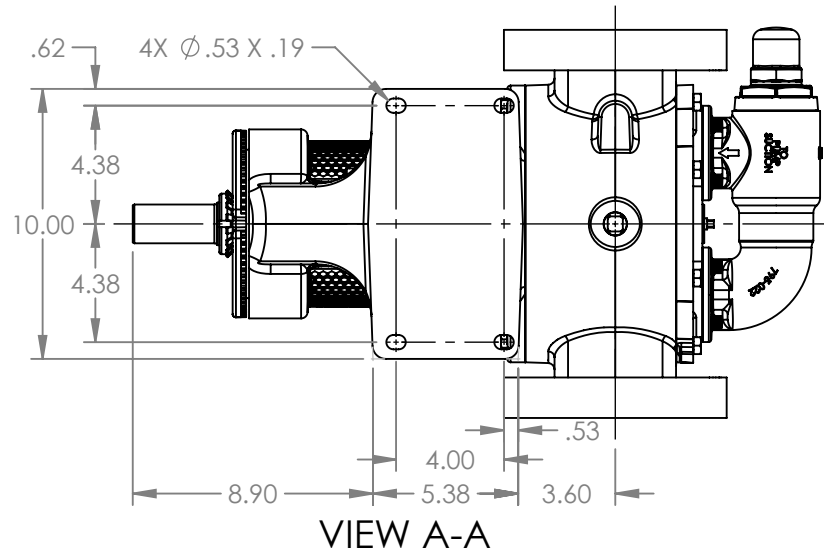


PORTS: 2X 3" FLANGES
DRILLED AND TAPPED
SUITABLE FOR USE WITH
CLASS 250 ANSI FLANGES



MODELS WITH OPTIONAL FLANGED PORTS:
LL124C, LL1124C, LL4124C, LL4624C

NOTES:
1. ALL DIMENSIONS ARE FOR REFERENCE ONLY.

STATE	Released	01/05/2026
DRAWN	aeverhardt	12/11/2025
CHECKED	DTL	01/05/2026

DIMENSIONS ARE IN INCHES
PROJECT: E399
WAS:



VIKING PUMP, INC.
A Unit of IDEX Corporation
Cedar Falls, IA 50613 U.S.A.
VIKINGPUMP.COM

THIS DRAWING IS THE PROPERTY OF
VIKING PUMP, INC. AND IS PROPRIETARY
IN GENERAL AND DETAIL. IT SHALL NOT BE
COPIED OR ITS CONTENTS REVEALED TO
OUTSIDE PARTIES WITHOUT THE WRITTEN
CONSENT OF VIKING PUMP, INC.

3D

DWG. NO.
LV-4847

SHEET 1 OF 1

REV. A.0

01/05/2026