



OEM: ASPHALT MARKET

SERIES	Technology		Internal Gear			External Gear	
	Series		34 Series™	224A Series™ / 324A Series™	124E Series™ / 324E Series™	SG-05 Series™	
APPLICATIONS	Refineries		✓	✓	✓		
	Terminals		✓	✓	✓		
	Hot Mix Plants		✓	✓	✓		
	Roofing Plants			✓	✓		
	Distributor Trucks		✓				
	Tar Kettles/Tack Tanks						✓
SPECIFICATIONS	GPM		90 - 450	15 - 1,600	15 - 685	.7 - 11.2	
	Ports	Size	2.5" - 5"	1.5" - 10"	1.5" - 6"	.5" - .75"	
		Type	Flange	NPT / Flange	NPT / Flange	NPT	
	Capabilities		<ul style="list-style-type: none"> Multiple jacketing options suitable for hot oil or steam applications, including the casing, bracket, head, and relief valve High Suction Capacity Hardened/Tungsten Carbide Parts Suck back/Flush Lines Minimal shearing on shear-sensitive emulsions and rubberized asphalts Ability to change from packing to cartridge seals in field O-Pro® Cartridge Seal option (1224A-ASP Series™ / 1324A-ASP Series™) Lower installation costs/reduced energy costs when compared to steam or hot oil (124E Series™ / 324E Series™) 				

NOTE: Capabilities / features may vary depending on pump series.

THE VIKING PUMP® ADVANTAGE

PROVEN MARKET LEADER

Over 2,000 Viking pumps are installed in asphalt applications every year.

DEDICATED CUSTOMER SUPPORT

As a **partner**, your organization will have **dedicated** inside and outside sales support, 75% of inquiries receive a response within 2 hours.

VERTICALLY INTEGRATED SUPPLY CHAIN

Viking Pump has the most control of their supply chain and maintains a 3-week lead time.



UNPARALLELED RELIABILITY

Viking Pump has such confidence in our products that we carry a standard 18 month or 36 month warranty, depending on the pump series.

THE RIGHT PRODUCTS FOR YOUR SYSTEMS

Viking offers a wide variety of products to equip your organization for success:



Internal gear



External Gear



Sliding Vane



Rotary Lobe*



Circumferential Piston*

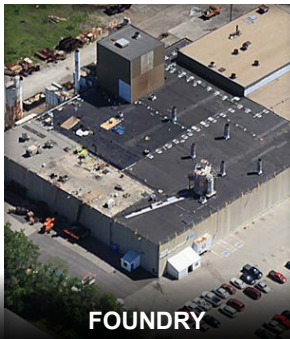
(* Hygienic)

VERTICALLY INTEGRATED PRODUCTION PROCESS

Viking Pump operates a foundry, a 250,000+ sq. ft. machining, assembly and testing center, and an extensive product engineering and testing lab in its world headquarters in Cedar Falls, Iowa, USA. This level of vertical integration ensures maximum quality, ability to satisfy special needs, and to meet project schedules.



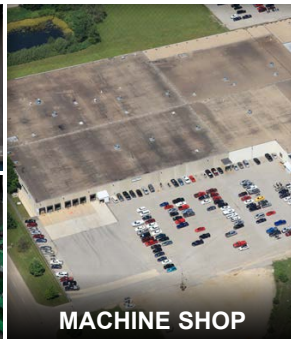
MELT & MOLD



FOUNDRY



MACHINING



MACHINE SHOP



TESTING



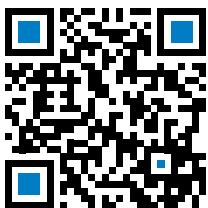
SHAKEOUT,
CHIP & GRIND



ASSEMBLY



WORLD HQ - USA



LET'S TALK

Contact Us Today & Make the Viking Pump® Advantage Yours!