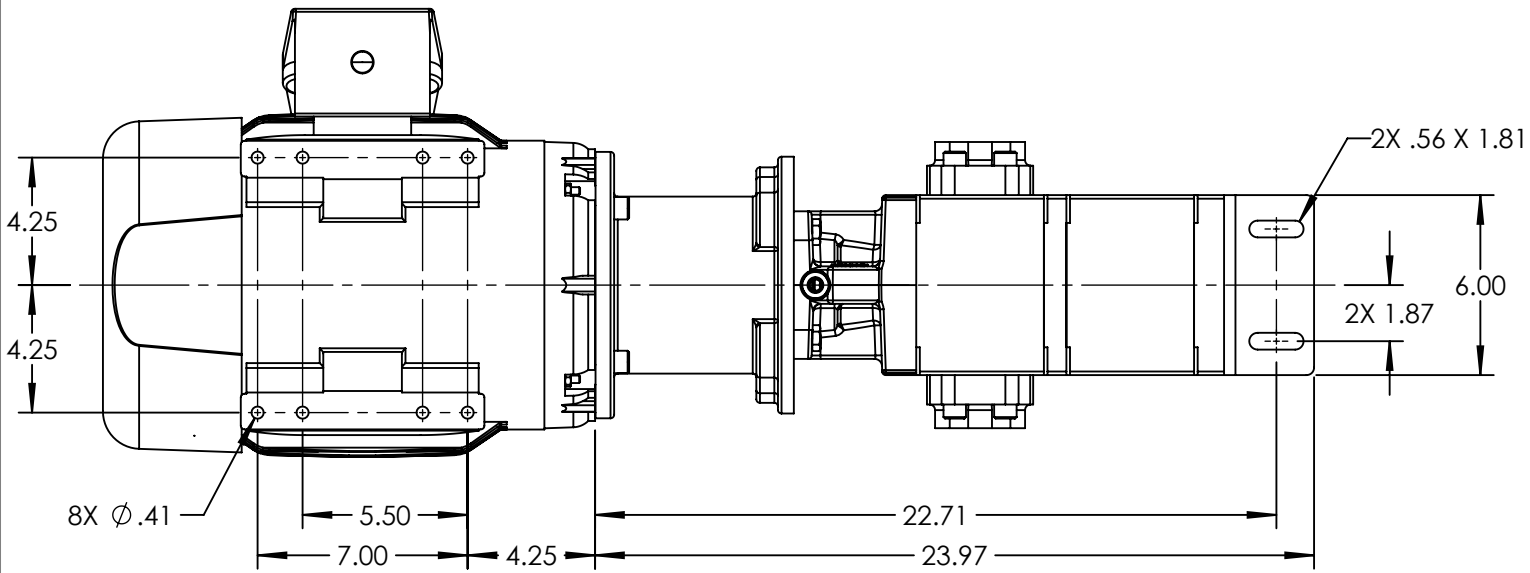
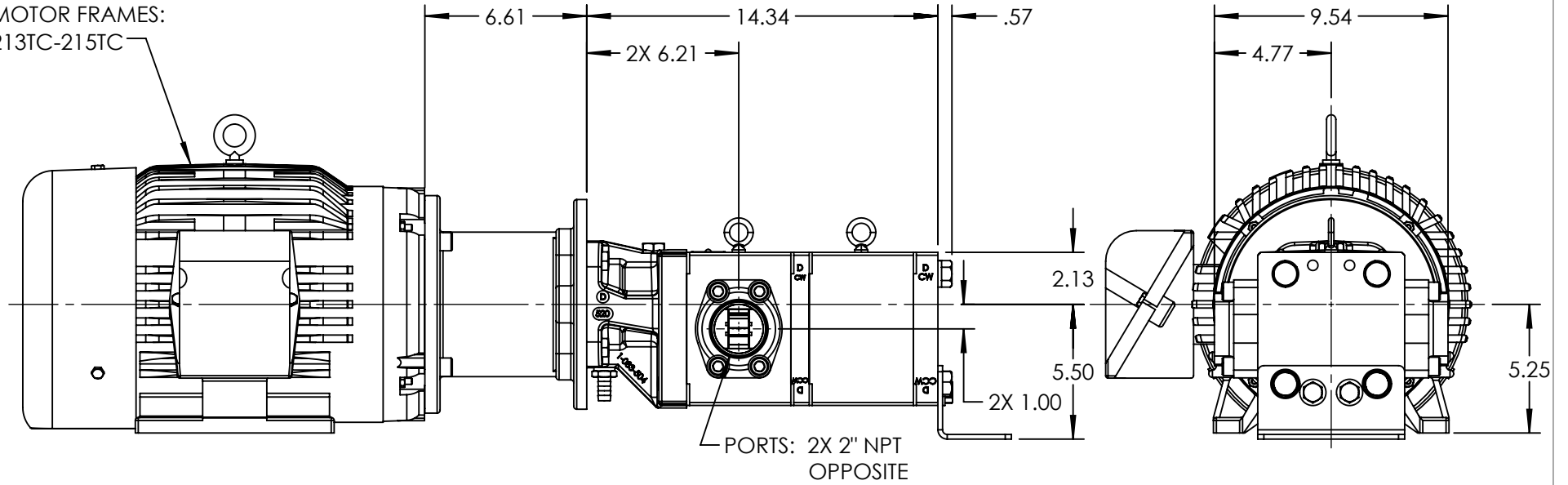


MOTOR FRAMES:
213TC-215TC



NOTES:

1. ALL DIMENSIONS ARE FOR REFERENCE ONLY.

STANDARD MODELS: GB-41018-G00-M, GB-41018-G10-M

| | | |
|---------|------------|------------|
| STATE | Released | 10/18/2022 |
| DRAWN | bmanernach | 10/18/2022 |
| CHECKED | BAM | 10/18/2022 |

DIMENSIONS ARE IN
INCHES
PROJECT:
WAS:



VIKING PUMP, INC.
A Unit of IDEX Corporation
Cedar Falls, IA 50613
U.S.A.

THIS DRAWING IS THE PROPERTY OF
VIKING PUMP, INC. AND IS PROPRIETARY
IN GENERAL AND DETAIL. IT SHALL NOT BE
COPIED OR ITS CONTENTS REVEALED TO
OUTSIDE PARTIES WITHOUT THE WRITTEN
CONSENT OF VIKING PUMP, INC.

3D

DWG. NO. SHEET 1 OF 1
GPV-1018-034-U

REV. A.0
10/18/2022



No.:

Date: 04-DEC-2015

Customer :

TECHNICAL PROPOSAL

Three-phase induction motor - Squirrel cage rotor

Product line : W22 NEMA Premium - Ball Bearings

Catalog Number : 01018ET3E215TC-W22

List Price : \$ Contact Us!

Notes:

Performed by:

Checked:



No.:

Date: 04-DEC-2015

DATA SHEET

Three-phase induction motor - Squirrel cage rotor

Customer :
Product line : W22 NEMA Premium - Ball Bearings

Frame : 213/5T
Output : 10 HP
Frequency : 60 Hz
Poles : 4
Full load speed : 1765
Slip : 1.94 %
Voltage : 208-230/460 V
Rated current : 27.4-24.8/12.4 A
Locked rotor current : 159/79.4 A
Locked rotor current (I_L/I_n) : 6.4
No-load current : 11.3/5.65 A
Full load torque : 29.4 lb.ft
Locked rotor torque : 200 %
Breakdown torque : 300 %
Design : B
Insulation class : F
Temperature rise : 80 K
Locked rotor time : 17 s (hot)
Service factor : 1.25
Duty cycle : S1
Ambient temperature : -20°C - +40°C
Altitude : 1000
Degree of Protection : IP55
Approximate weight : 172 lb
Moment of inertia : 1.5104 sq.ft.lb
Noise level : 58 dB(A)

| | D.E. | N.D.E. | Load | Power factor | Efficiency (%) |
|---------------------|---------|---------|------|--------------|----------------|
| Bearings | 6308 ZZ | 6207 ZZ | 100% | 0.83 | 91.7 |
| Regreasing interval | --- | --- | 75% | 0.77 | 91.7 |
| Grease amount | --- | --- | 50% | 0.66 | 91.0 |

Notes:

Performed by

Checked

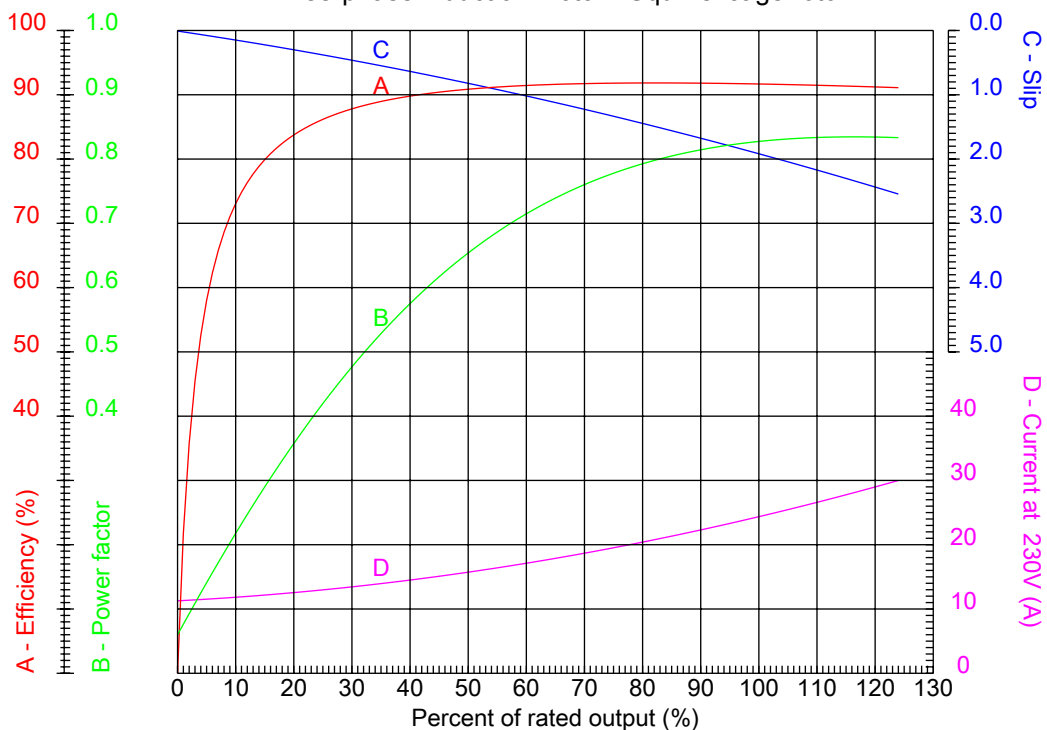


No.:

Date: 04-DEC-2015

PERFORMANCE CURVES RELATED TO RATED OUTPUT

Three-phase induction motor - Squirrel cage rotor



Customer :
Product line : W22 NEMA Premium - Ball Bearings

| | | | |
|------------------|--------------------|--|---------|
| Frame | : 213/5T | Locked rotor current (I _l /I _n) | : 6.4 |
| Output | : 10 HP | Duty cycle | : S1 |
| Frequency | : 60 Hz | Service factor | : 1.25 |
| Full load speed | : 1765 | Design | : B |
| Voltage | : 208-230/460 V | Locked rotor torque | : 200 % |
| Rated current | : 27.4-24.8/12.4 A | Breakdown torque | : 300 % |
| Insulation class | : F | | |

Notes:

Performed by

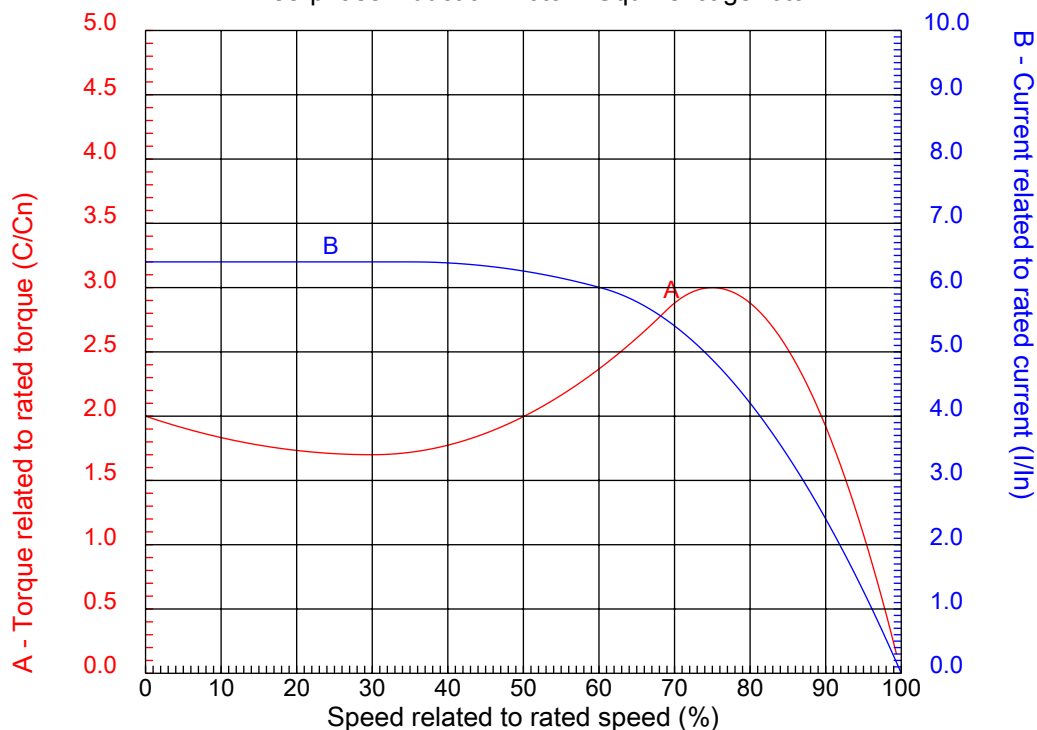
Checked



No.:

Date: 04-DEC-2015

CHARACTERISTIC CURVES RELATED TO SPEED Three-phase induction motor - Squirrel cage rotor



Customer :
Product line : W22 NEMA Premium - Ball Bearings

| | | | |
|------------------|--------------------|--|---------|
| Frame | : 213/5T | Locked rotor current (I _l /I _n) | : 6.4 |
| Output | : 10 HP | Duty cycle | : S1 |
| Frequency | : 60 Hz | Service factor | : 1.25 |
| Full load speed | : 1765 | Design | : B |
| Voltage | : 208-230/460 V | Locked rotor torque | : 200 % |
| Rated current | : 27.4-24.8/12.4 A | Breakdown torque | : 300 % |
| Insulation class | : F | | |

Notes:

Performed by

Checked

1 2 3 4 5 6 7 8

A

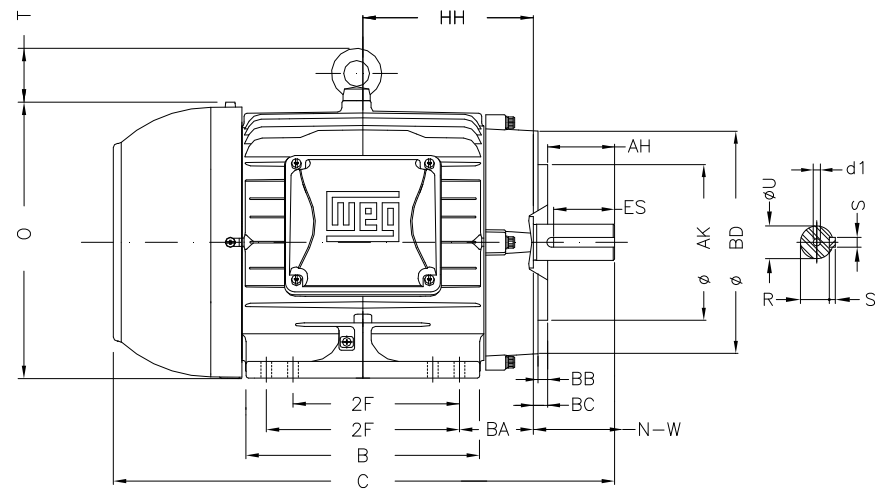
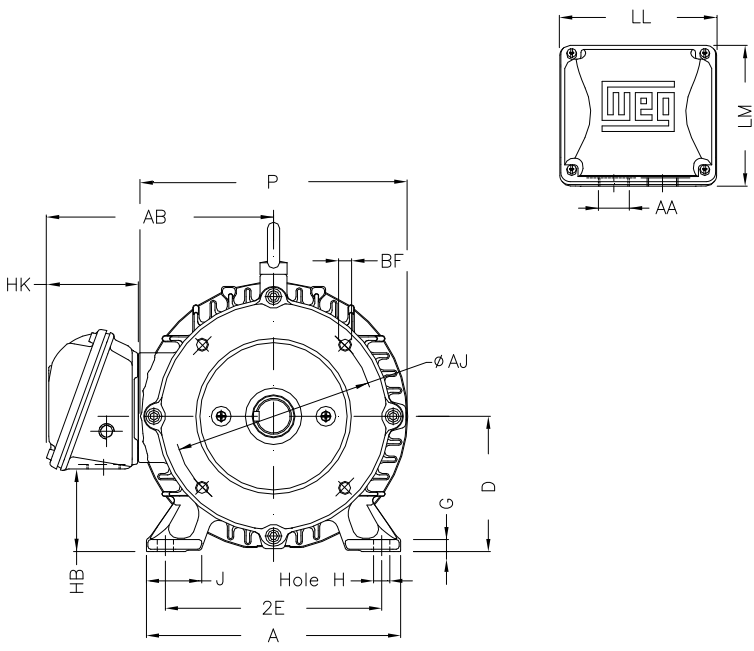
B

C

D

E

F



Notes:

Performed by:

Checked:

Customer:

W22 NEMA Premium - Ball Bearings

Three-phase induction motor

Frame 213/5T - IP55

04-DEC-2015



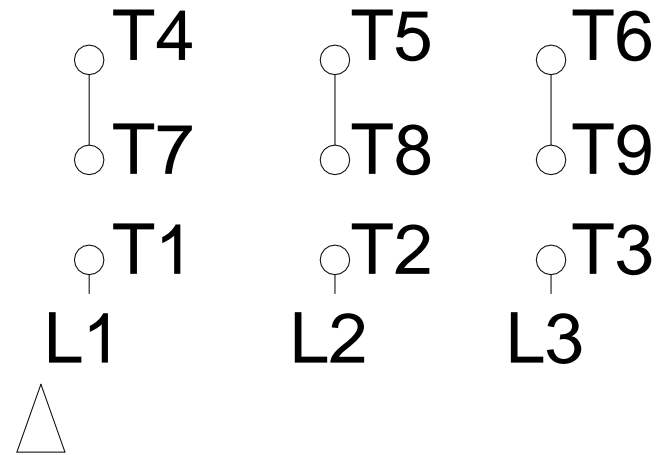
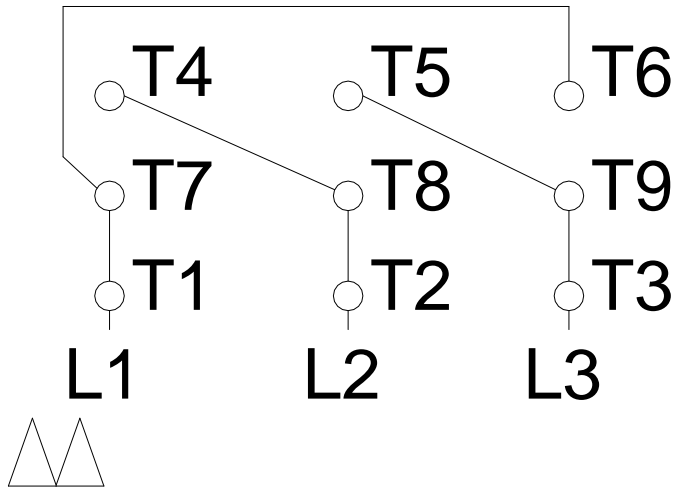
| | | | | |
|-------------|--------|-------|--------|--------|
| 2E | J | A | P | AB |
| 8.500 | 1.772 | 9.764 | 10.669 | 8.583 |
| 2F | K | B | BA | FBA |
| 5.500/7.000 | 2.165 | 8.858 | 3.500 | 5.921 |
| U | N-W | ES | S | R |
| 1.375 | 3.375 | 2.480 | 0.313 | 1.203 |
| depth | D | G | HB | O |
| 0.313 | 5.250 | 0.669 | 2.985 | 10.841 |
| T | HF | HH | HK | H |
| 1.772 | 5.250 | 7.000 | 3.150 | 0.406 |
| C | FC | LL | LM | AA |
| 19.517 | 22.546 | 5.512 | 5.236 | NPT 1" |
| d1 | Flange | AJ | AK | BD |
| A 4 | FC-184 | 7.250 | 8.500 | 8.875 |
| BF | BB | BC | AH | |
| UNC 1/2"x13 | 0.250 | 0.250 | 3.125 | |

1 2 3 4 5 6 7 8

LOW VOLTAGE

HIGH VOLTAGE

A
B
C
D
E
F



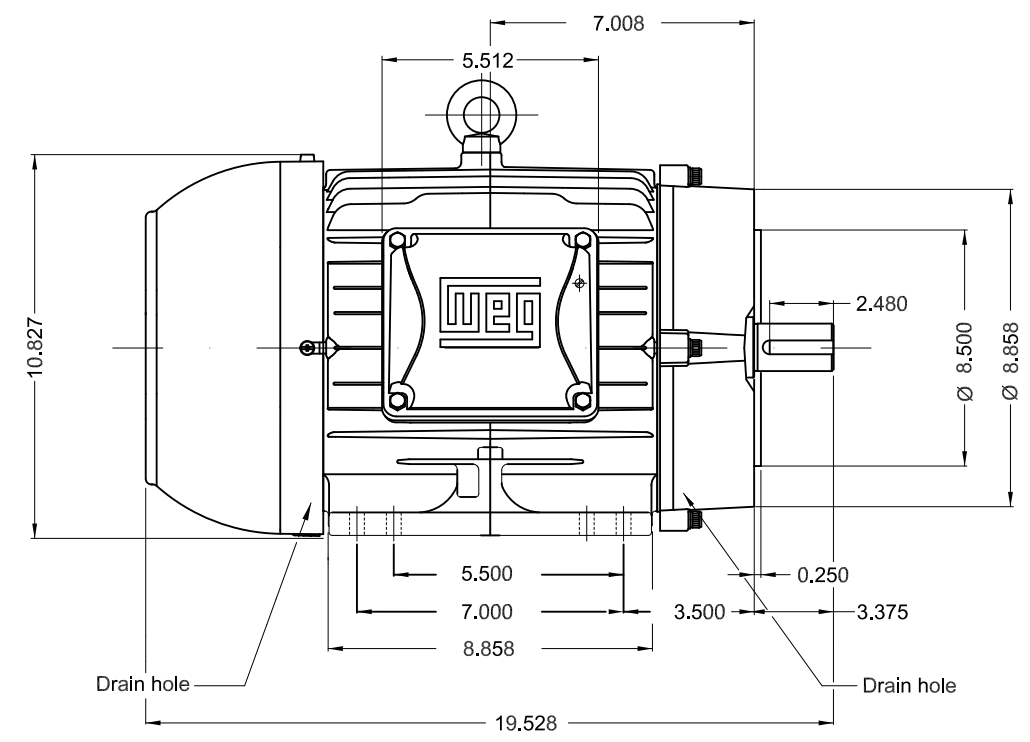
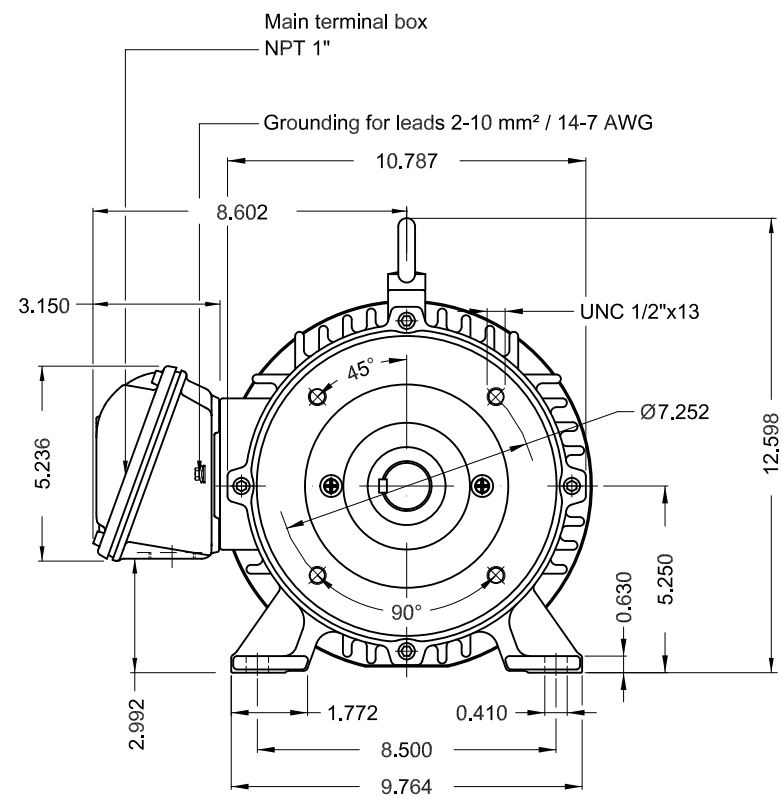
| | | |
|--|-------------|--|
| Notes: | | |
| Performed by: | | |
| Checked: | | |
| Customer: | | |
| W22 NEMA Premium - Ball Bearings | | |
| Three-phase induction motor Frame 213/5T - IP55 | 04-DEC-2015 | |

1 2 3 4 5 6

A

B

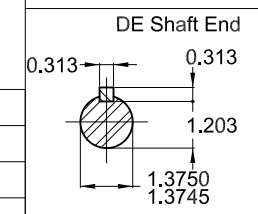
C



D

E

- Bearing cap
- Color RAL 5009
- Painting plan 207A
- Mounting B34R(D)



7.5 HP 04 Poles 60Hz A

| ECM | LOC | SUMMARY OF MODIFICATIONS | EXECUTED | CHECKED | RELEASED | DATE | VER |
|----------|-----------|---|----------|---------|----------|------|-----|
| EXECUTED | PIRWBUSER | THREE PHASE W22 MOTOR - NEMA PREMIUM EFF FRAME 213/5TC IP55 TEFC | | | | | |
| CHECKED | | | | | | | |
| RELEASED | | | | | | | |
| REL DT. | | | | | | | |

PREVIEW
WDD



SHEET 1 / 1

**W22**

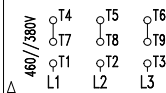
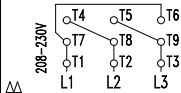
CC029A

® Inverter Duty Motor
Severe Duty

12445969

MADE IN MEXICO MODEL 00718ET3E213TC-W22

| | | | | | |
|--|---------------|---------------------|------------------|----------|----------|
| PH 3 | FR 213/5TC | HP(kW) 7.5(5.5) | Hz 60 | SF 1.25 | PF 0.82 |
| V 230/460 | A 18.4/9.18 | RPM 1765 | INS. CL. F | ΔT 80 K | IP55 |
| NEMA NOM EFF 91.7 % | | | DES B DUTY CONT. | | AMB 40°C |
| ENCL TEFC | SFA 23.0/11.5 | USABLE @208V 19.9 A | SF 1.15 | SFA 22.9 | |
| 7.5HP 5.5kW 50Hz 380V 11.0A 1455RPM SF1.25 EFF 89.6% (IE3) | | | | | CODE H |



→ 6308-ZZ

→ 6207-ZZ

MOBIL POLYREX EM

ALT 1000 m.a.s.l. | 168 Lbs

For 60Hz: Class I, Div 2, Gr. A, B, C and D - T3

Class I, Zone 2, IIC - T3

Class II, Div 2, Gr. F and G - T4

For use on PWM, Gr. A, B, C, D and F

VT 1000:1, CT 20:1, 1.0SF, T3A

FOR SAFE AREA
MOD.TE1BFOXON