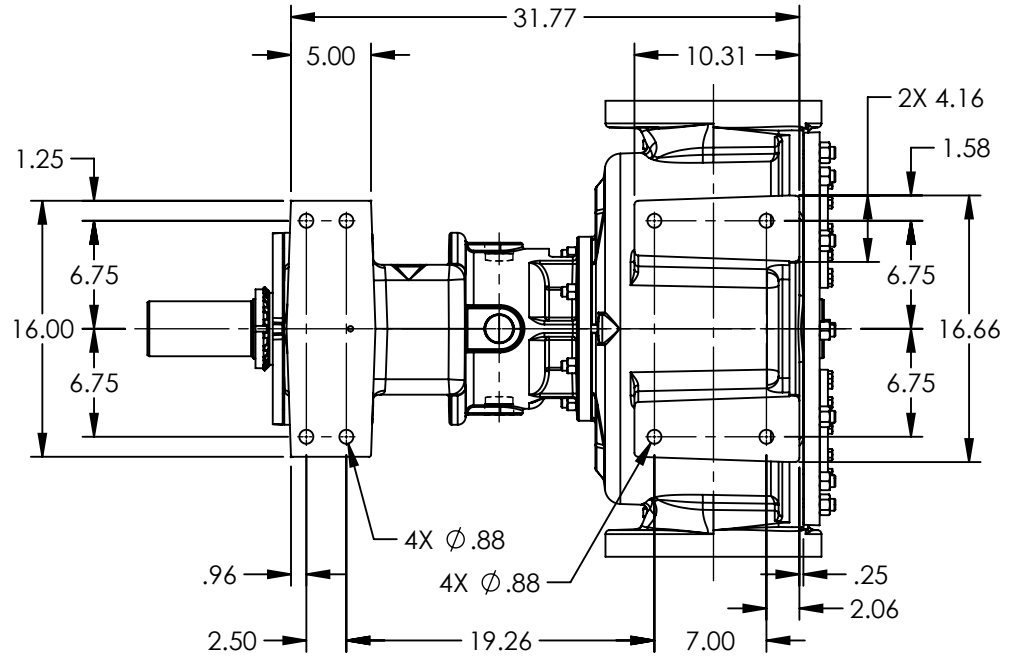
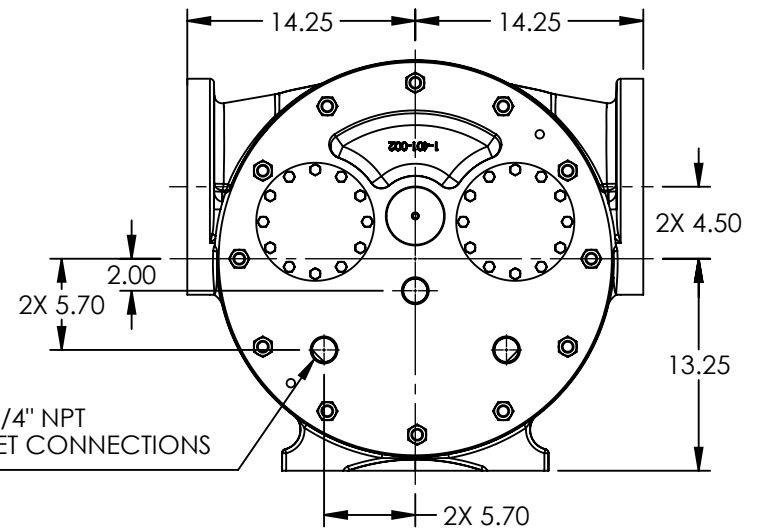
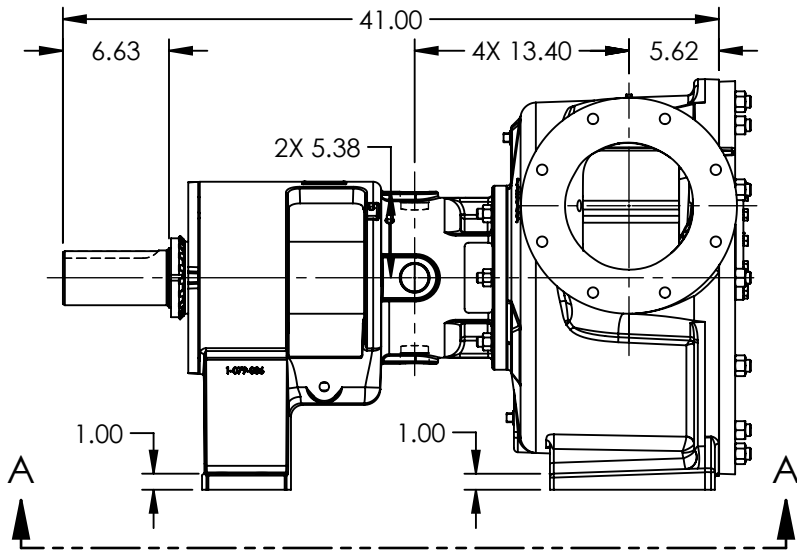


PORTS: 2X 8" FLANGES  
STUDS AND NUTS (NOT SHOWN)  
SUITABLE FOR USE WITH  
CLASS 125 ANSI FLANGES  
(324A, 1324A, 4324A)  
CLASS 150 ANSI FLANGES  
(323A, 4323A, 327A, 4327A)



VIEW A-A



NOTES:  
1. ALL DIMENSIONS ARE FOR REFERENCE ONLY.

STANDARD MODELS: R324A, R1324A, R4324A, R323A, R4323A, R327A, R4327A

STATE	Released	05/18/2021
DRAWN	sjakel	05/10/2019
CHECKED	BA	05/18/2021

DIMENSIONS ARE IN INCHES  
PROJECT:  
WAS:



VIKING PUMP, INC.  
A Unit of IDEX Corporation  
Cedar Falls, IA 50613 U.S.A.  
VIKINGPUMP.COM

THIS DRAWING IS THE PROPERTY OF VIKING PUMP, INC. AND IS PROPRIETARY IN GENERAL AND DETAIL. IT SHALL NOT BE COPIED OR ITS CONTENTS REVEALED TO OUTSIDE PARTIES WITHOUT THE WRITTEN CONSENT OF VIKING PUMP, INC.

3D

DWG. NO.  
RV-346

SHEET 1 OF 1

REV. G.1

05/18/2021