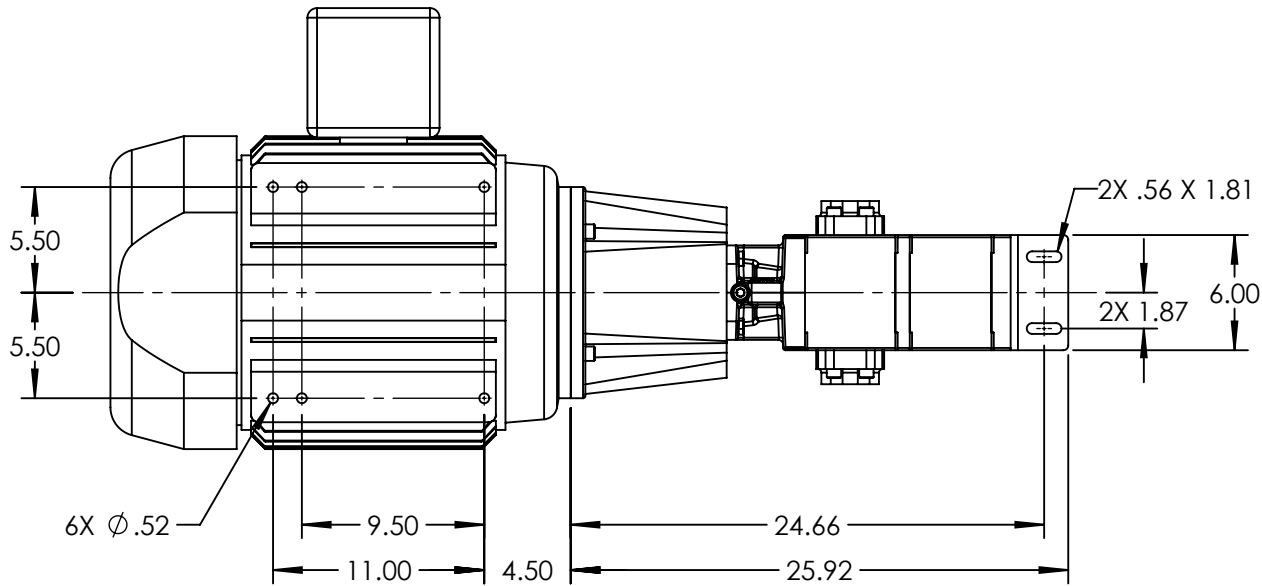
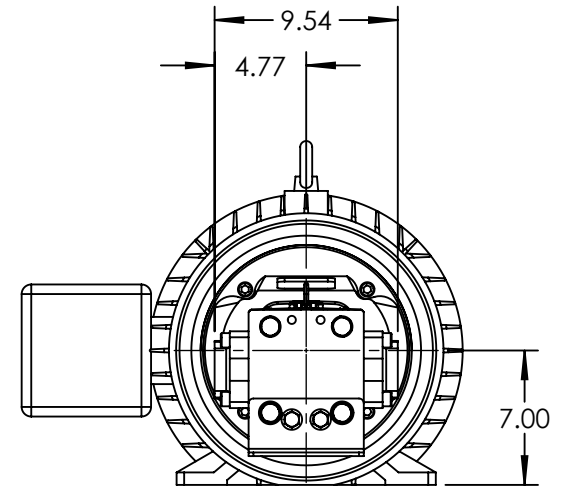
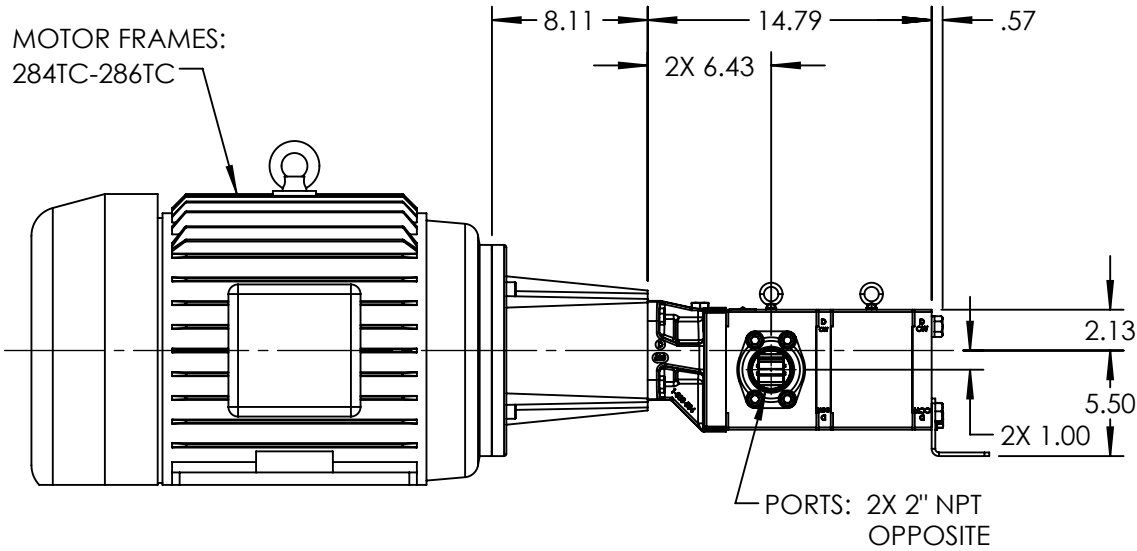


MOTOR FRAMES:
284TC-286TC



STANDARD MODELS: GB-41022-G00-M, GB-41022-G10-M

NOTES:

1. ALL DIMENSIONS ARE FOR REFERENCE ONLY.

STATE	Released	07/16/2021
DRAWN	bmanernach	6/23/2021
CHECKED	JAG	07/16/2021

DIMENSIONS ARE IN INCHES
PROJECT: E331
WAS:



VIKING PUMP, INC.
A Unit of IDEX Corporation
Cedar Falls, IA 50613
U.S.A.

THIS DRAWING IS THE PROPERTY OF
VIKING PUMP, INC. AND IS PROPRIETARY
IN GENERAL AND DETAIL. IT SHALL NOT BE
COPIED OR ITS CONTENTS REVEALED TO
OUTSIDE PARTIES WITHOUT THE WRITTEN
CONSENT OF VIKING PUMP, INC.

3D

DWG. NO.	SHEET 1 OF 1
GPV-1022-002-U	

REV. A.0
07/16/2021

DATA SHEET



Three Phase Induction Motor - Squirrel Cage

Customer :					
Product line : W22 NEMA Premium Efficiency Three-Phase		Product code : 11457085		Catalog # : 03018ET3E286TC-W22	
Frame : 284/6TC	Output : 30 HP (22 kW)	Poles : 4	Frequency : 60 Hz	Rated voltage : 208-230/460 V	Rated current : 77.6-70.2/35.1 A
L. R. Amperes : 474-428/214 A	LRC : 6.1x(Code G)	No load current : 22.4-26.0/13.0 A	Rated speed : 1765 rpm	Slip : 1.94 %	Rated torque : 12.2 kgfm
Locked rotor torque : 240 %	Breakdown torque : 240 %	Insulation class : F	Service factor : 1.25	Moment of inertia (J) : 0.2467 kgm ²	Design : B
Locked rotor time : 36s (cold) 20s (hot)	Temperature rise : 80 K	Duty cycle : Cont.(S1)	Ambient temperature : -20°C to +40°C	Altitude : 1000 m.a.s.l.	Protection degree : IP55
Cooling method : IC411 - TEFC	Mounting : F-1	Rotation ¹ : Both (CW and CCW)	Noise level ² : 63.0 dB(A)	Starting method : Direct On Line	Approx. weight ³ : 208 kg
Output	25%	50%	75%	100%	Foundation loads
Efficiency (%)	0.000	93.0	93.0	93.6	Max. traction : 408 kgf
Power Factor	0.00	0.70	0.80	0.84	Max. compression : 616 kgf
			<u>Drive end</u>		<u>Non drive end</u>
Bearing type	:	6311 C3		6211 C3	
Sealing	:	V'Ring		V'Ring	
Lubrication interval	:	20000 h		20000 h	
Lubricant amount	:	18 g		11 g	
Lubricant type	:	Mobil Polyrex EM			
Notes					
This revision replaces and cancel the previous one, which must be eliminated. (1) Looking the motor from the shaft end. (2) Measured at 1m and with tolerance of +3dB(A). (3) Approximate weight subject to changes after manufacturing process. (4) At 100% of full load.			These are average values based on tests with sinusoidal power supply, subject to the tolerances stipulated in NEMA MG-1.		
Rev.	Changes Summary			Performed	Checked
Performed by					
Checked by				Page	Revision
Date	14/02/2020			1 / 6	

TORQUE AND CURRENT VS SPEED CURVE

Three Phase Induction Motor - Squirrel Cage

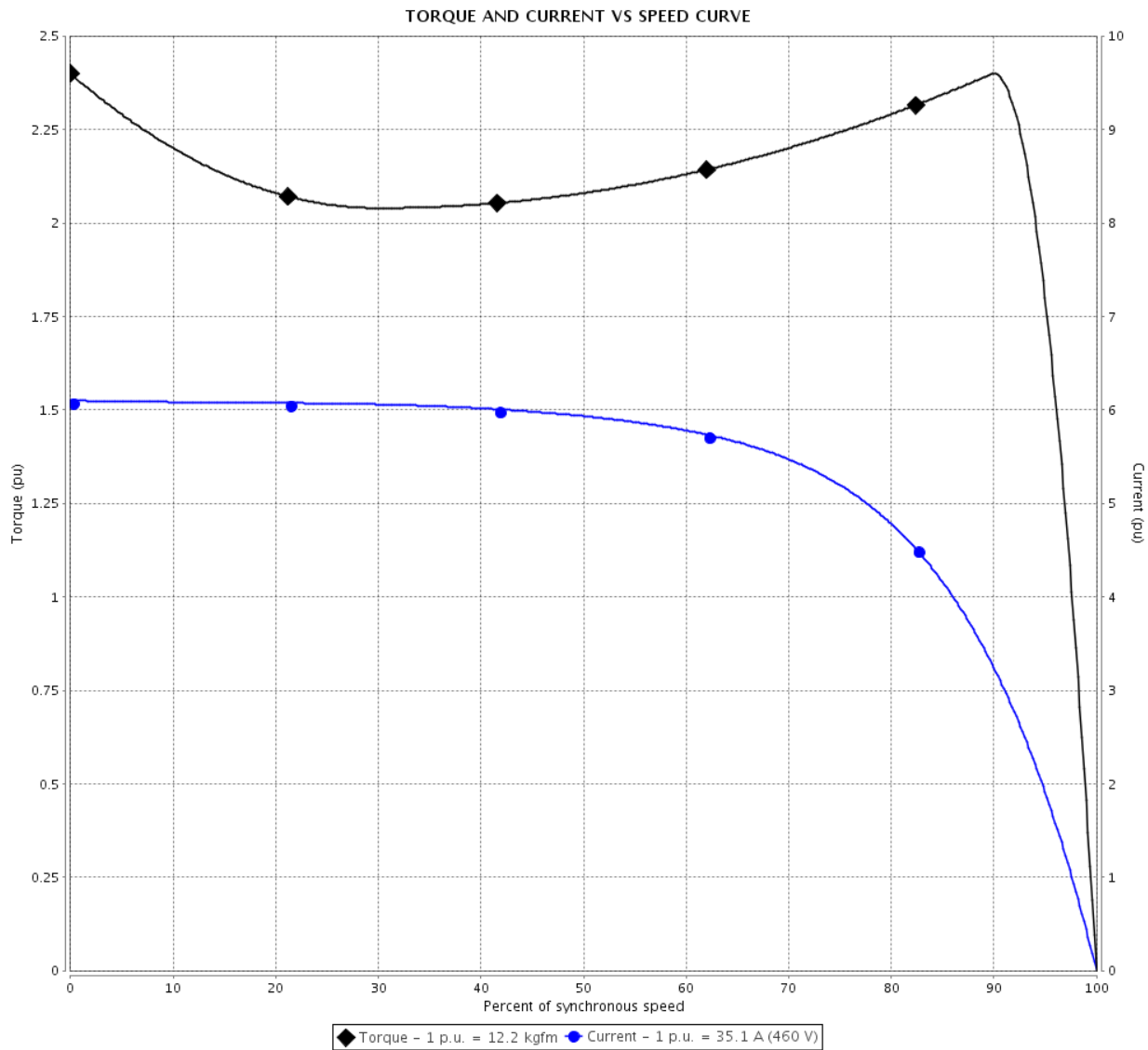


Customer :

Product line : W22 NEMA Premium Efficiency
Three-Phase

Product code : 11457085

Catalog # : 03018ET3E286TC-W22



Performance : 208-230/460 V 60 Hz 4P

Rated current	: 77.6-70.2/35.1 A	Moment of inertia (J)	: 0.2467 kgm ²
LRC	: 6.1	Duty cycle	: Cont.(S1)
Rated torque	: 12.2 kgfm	Insulation class	: F
Locked rotor torque	: 240 %	Service factor	: 1.25
Breakdown torque	: 240 %	Temperature rise	: 80 K
Rated speed	: 1765 rpm	Design	: B

Locked rotor time : 36s (cold) 20s (hot)

Rev.	Changes Summary	Performed	Checked	Date
Performed by			Page 2 / 6	Revision
Checked by				
Date	14/02/2020			

LOAD PERFORMANCE CURVE

Three Phase Induction Motor - Squirrel Cage

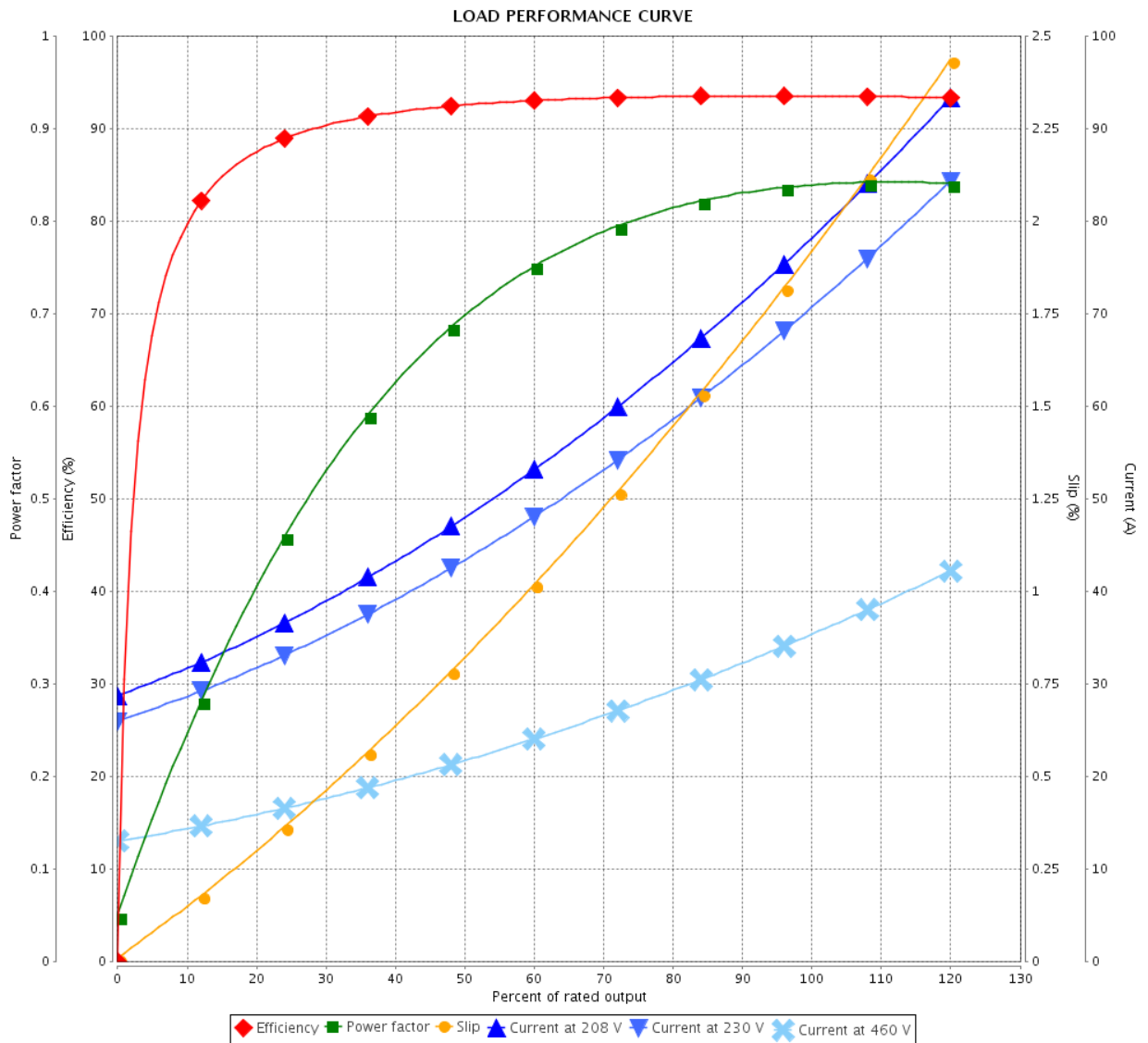


Customer :

Product line : W22 NEMA Premium Efficiency
Three-Phase

Product code : 11457085

Catalog # : 03018ET3E286TC-W22



Performance : 208-230/460 V 60 Hz 4P

Rated current : 77.6-70.2/35.1 A
 LRC : 6.1
 Rated torque : 12.2 kgfm
 Locked rotor torque : 240 %
 Breakdown torque : 240 %
 Rated speed : 1765 rpm

Moment of inertia (J) : 0.2467 kgm²
 Duty cycle : Cont.(S1)
 Insulation class : F
 Service factor : 1.25
 Temperature rise : 80 K
 Design : B

Rev.	Changes Summary	Performed	Checked	Date
Performed by		Page		Revision
Checked by		3 / 6		
Date		14/02/2020		

THERMAL LIMIT CURVE



Three Phase Induction Motor - Squirrel Cage

Customer :

Product line : W22 NEMA Premium Efficiency
Three-Phase

Product code : 11457085

Catalog # : 03018ET3E286TC-W22

Performance : 208-230/460 V 60 Hz 4P

Rated current : 77.6-70.2/35.1 A

LRC : 6.1

Rated torque : 12.2 kgfm

Locked rotor torque : 240 %

Breakdown torque : 240 %

Rated speed : 1765 rpm

Moment of inertia (J) : 0.2467 kgm²

Duty cycle : Cont.(S1)

Insulation class : F

Service factor : 1.25

Temperature rise : 80 K

Design : B

Heating constant

Cooling constant

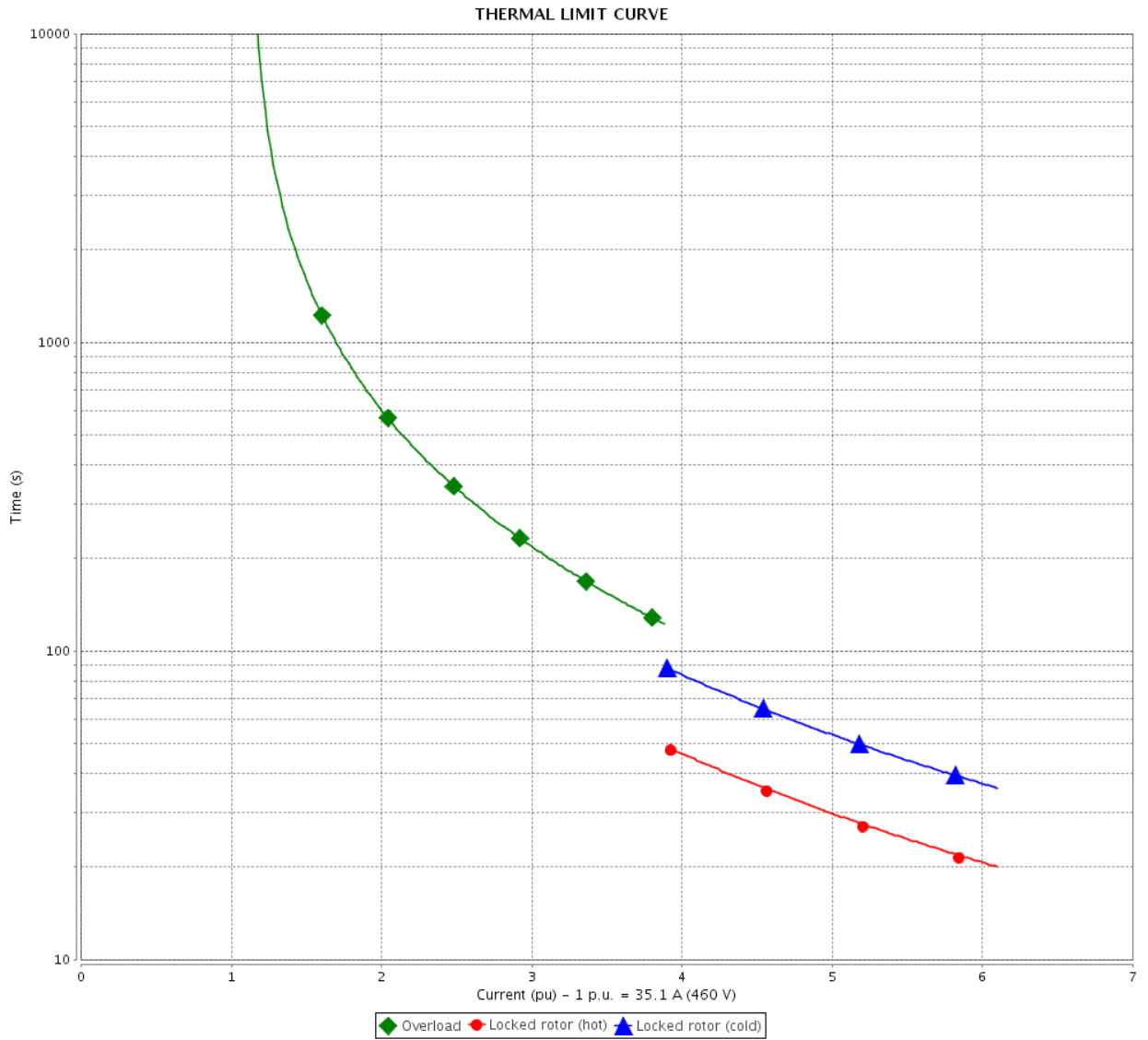
Rev.	Changes Summary	Performed	Checked	Date
Performed by				
Checked by			Page	Revision
Date	14/02/2020		4 / 6	

THERMAL LIMIT CURVE

Three Phase Induction Motor - Squirrel Cage



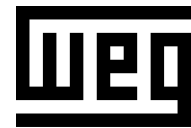
Customer : _____



Rev.	Changes Summary	Performed	Checked	Date
Performed by		Page 5 / 6		Revision
Checked by				
Date				

VFD OPERATION CURVE

Three Phase Induction Motor - Squirrel Cage

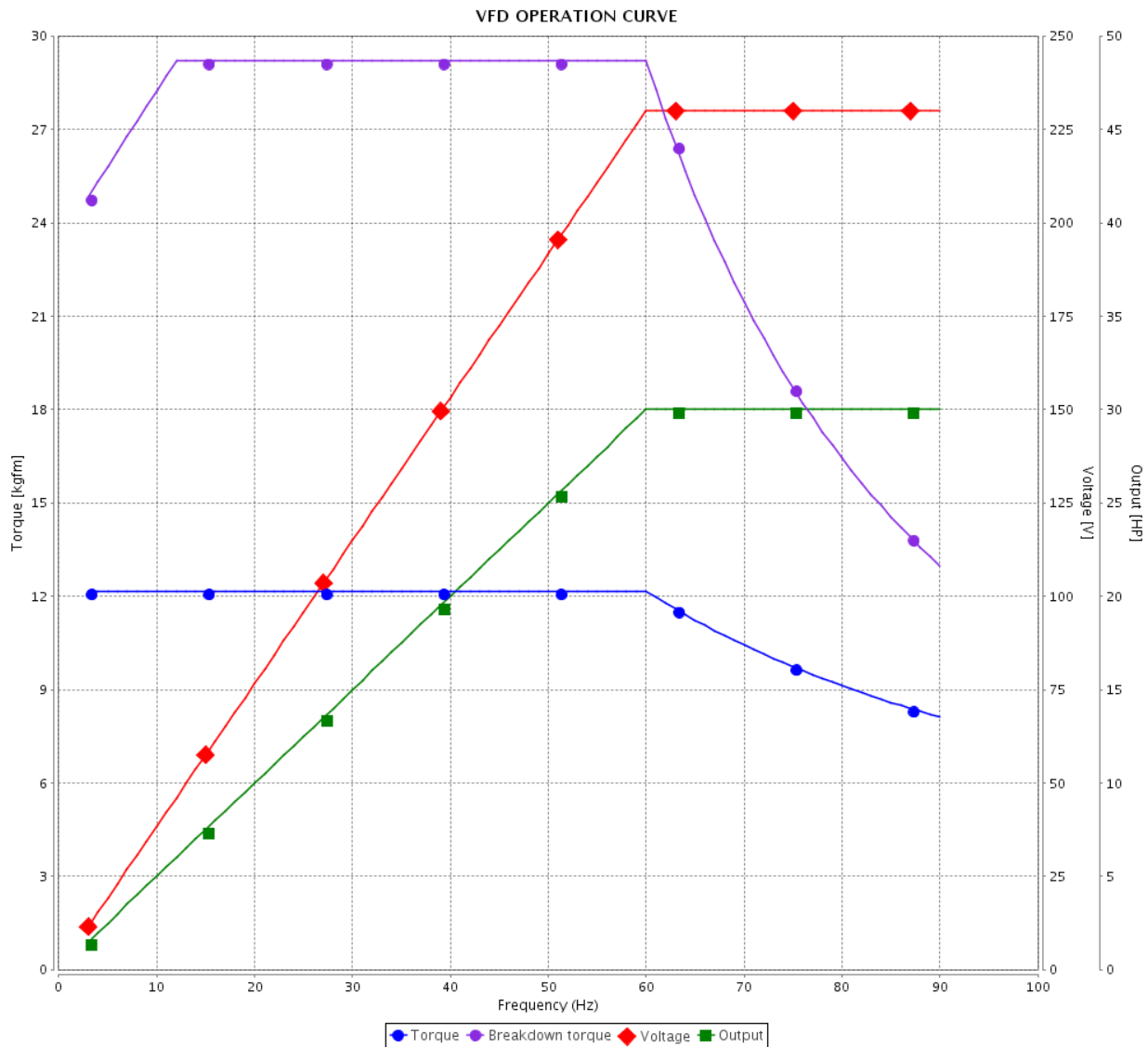


Customer :

Product line : W22 NEMA Premium Efficiency
Three-Phase

Product code : 11457085

Catalog # : 03018ET3E286TC-W22



Performance : 208-230/460 V 60 Hz 4P

Rated current : 77.6-70.2/35.1 A
 LRC : 6.1
 Rated torque : 12.2 kgfm
 Locked rotor torque : 240 %
 Breakdown torque : 240 %
 Rated speed : 1765 rpm

Moment of inertia (J) : 0.2467 kgm²
 Duty cycle : Cont.(S1)
 Insulation class : F
 Service factor : 1.25
 Temperature rise : 80 K
 Design : B

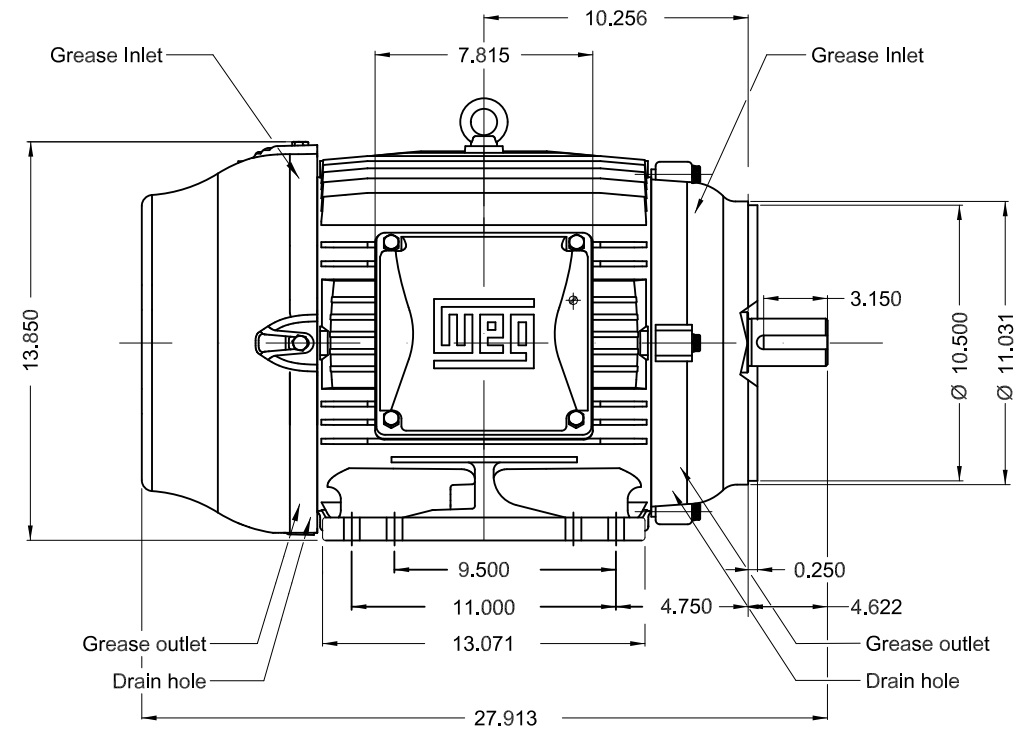
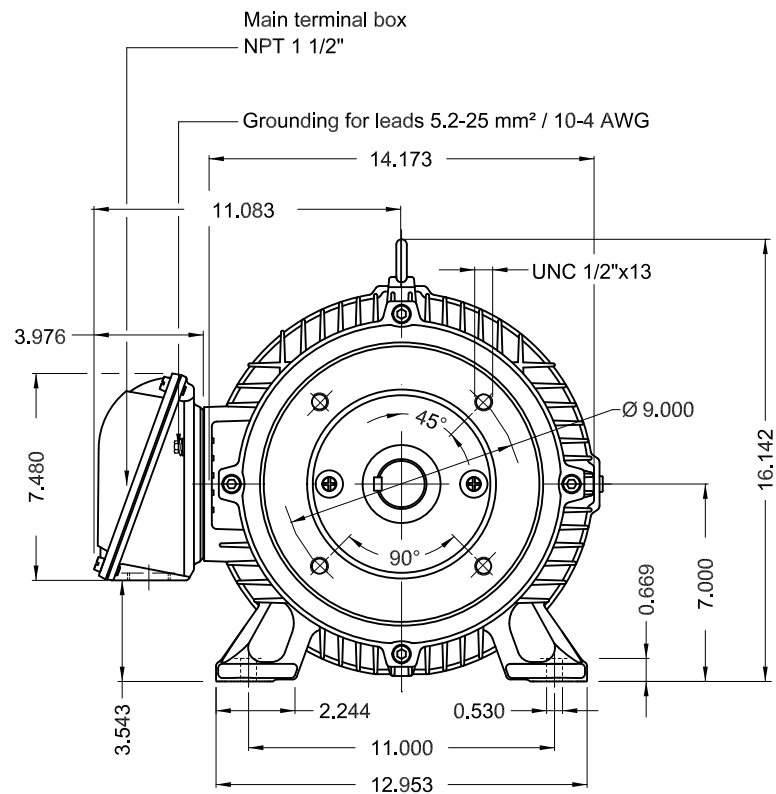
Rev.	Changes Summary	Performed	Checked	Date
Performed by			Page 6 / 6	Revision
Checked by				
Date	14/02/2020			

1 2 3 4 5 6

A

B

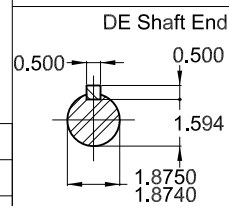
C



D

E

Color RAL 5009
 Painting plan 203A
 Mounting B34R(D)



30 HP 04 Poles 60Hz A

ECM	LOC	SUMMARY OF MODIFICATIONS	EXECUTED	CHECKED	RELEASED	DATE	VER
EXECUTED	PIRWBUSER	THREE PHASE W22 MOTOR - NEMA PREMIUM EFF FRAME 284/6TC IP55 TEFC					
CHECKED							
RELEASED							
REL DT.	WMO	Jaragua do Sul	Product Engineering	SHEET 1 / 1			

PREVIEW
 WDD



Dimensions in inches XME A3

MODEL 03018ET3E286TC-W22
MADE IN BRAZIL
11457085



*Inverter Duty Motor
Severe Duty*



FOR SAFE AREA
MOD.TE1BFOXON

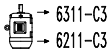
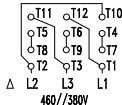
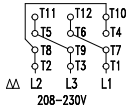


For 60Hz: Class I, Div 2, Gr. A, B, C and D - T3
Class I, Zone 2, IIC - T3

Class II, Div 2, Gr. F and G - T4

For 60Hz use on PWM, Gr. A, B, C, D and F,
VT 1000:1, CT 20:1, 1.0SF, T3A

PH 3	FR 284/6TC	HP(kW) 30.0(22.0)	Hz 60
V 230/460	A 70.2/35.1	RPM 1765	DES B
NEMA NOM EFF 93.6 %	INS. CL. F Δ T 80 K	IP55	
ENCL TEFC	DUTY CONT.	AMB. 40°C	
CODE G	PF 0.84	SF 1.25	SFA 87.8/43.9
USABLE @208V 77.6 A	SF 1.15	SFA 89.2	
30HP 22kW 50Hz 380V 43.1A 1445RPM SF1.00 EFF 90.2% (IE1)	ALT 1000 m.a.s.l.	459 Lbs	



MOBIL POLYREX EM
18 g 20000 h