

ROTARY LOBE PRODUCT LINE: STAINLESS STEEL PUMPS

SteriLobe® Series

Section	1725
Page	1725.1
Issue	B

TABLE OF CONTENTS

Related Products	1
Operating Range.....	1
Series Description	1
Features & Benefits	2
Standard Materials of Construction	2
Cutaway View & Pump Features.....	2
Model Number Key	3
Specifications	3
Dimensions – All Models – Inches	4
Dimensions – All Models – Millimeters	5
Dimensions – Rectangular Inlet (MM).....	6
Dimensions – All Models – Front Cover Jacket (MM).....	7
Relief Valve Maximum Dimensions (MM)	8
NPSH Required	9

SERIES DESCRIPTION

The SteriLobe® Series pump is the perfect rotary lobe solution for Pharmaceutical and Biopharma applications as well as high end foods and beverage, Personal Care applications and more due to its hygienic design and gentle handling.

US 3-A, European CE, UKCA and ATEX compliant models and specifications are available as well as construction in a variety of material types.

It can handle flows up to 753 GPM (171 m³/h).



RELATED PRODUCTS

Stainless Steel, Revolution® Series: Catalog Section 1726

Stainless Steel, Classic+ Series™: Catalog Section 1723



(shown with horizontal ports)



(shown with vertical ports)

OPERATING RANGE

SERIES	NOMINAL FLOW		MAXIMUM PRESSURE		TEMPERATURE		VISCOSITY RANGE	
	GPM	m³/h	PSI	Bar	°F	°C	SSU	cSt
SteriLobe®	0 - 753	0 - 171	218	15	to +300	to +150	to 910,000	to 200,000

Section	1725
Page	1725.2
Issue	B

ROTARY LOBE PRODUCT LINE: STAINLESS STEEL PUMPS

SteriLobe® Series

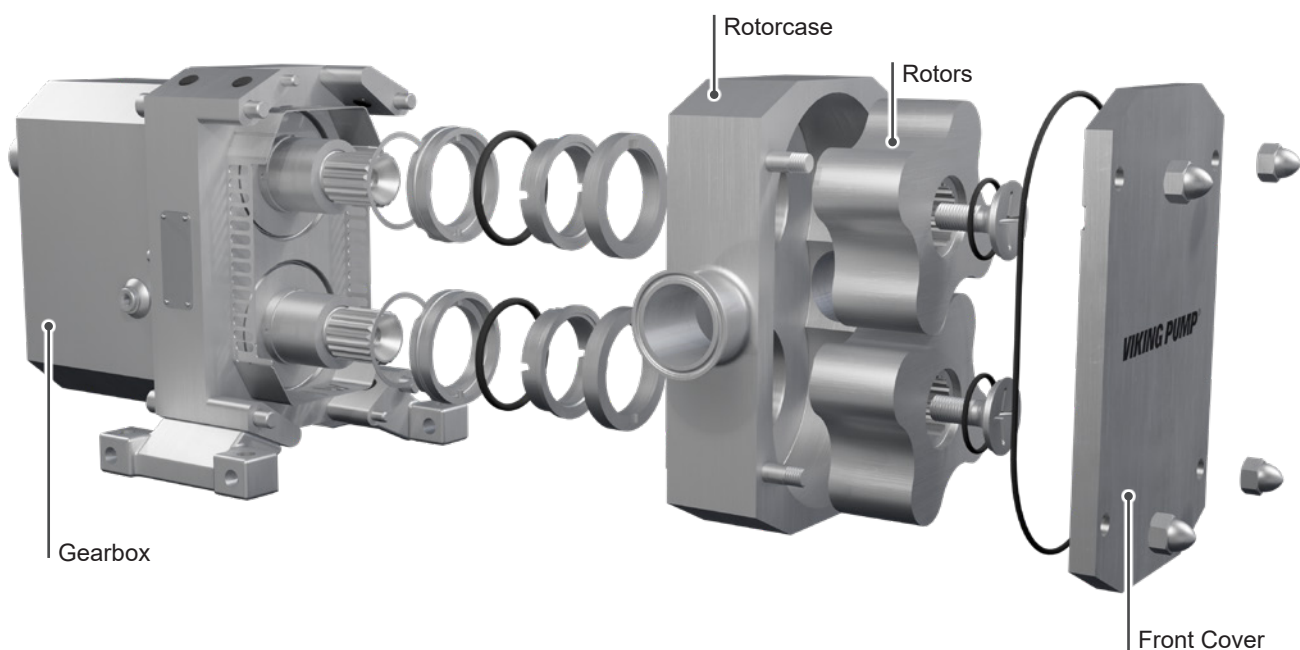
FEATURES & BENEFITS

- Cleanability
 - » Cover joint profile improves hygienic characteristics & self-draining capabilities
 - » Clean & corrosion resistant stainless gear cover & bearing housing
- Ease of Maintenance
 - » Front loading seals can be changed while the pump is still in-line
 - » Seal positioned for optimal lubrication, maximizing seal life
 - » Hassle free gearbox maintenance with sealed for life bearings
- Performance
 - » Multi-lobe rotors reduce shear & pulsation effect; ideal for sensitive media
 - » Innovative cusps with reliefs allow for easier cleaning and self draining with improved efficiency
 - » Optional front cover drain point on horizontally mounted pumps

STANDARD MATERIALS OF CONSTRUCTION

Component	Standard Material
Rotors	316L Stainless Steel
Rotorcase	316L Stainless Steel
Shafts	316L Stainless Steel
Front Cover	316L Stainless Steel
Rotor Retainer	316L Stainless Steel
Bearing Housing	304 Stainless Steel

CUTAWAY VIEW & PUMP FEATURES

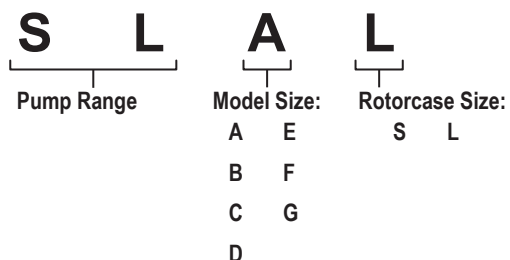


ROTARY LOBE PRODUCT LINE: STAINLESS STEEL PUMPS

SteriLobe® Series

Section	1725
Page	1725.3
Issue	B

MODEL NUMBER KEY



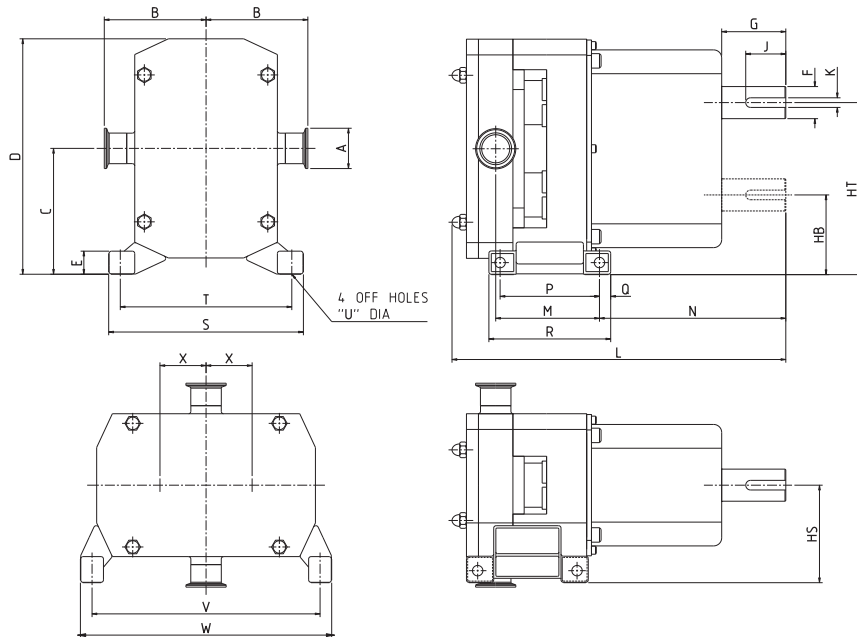
SPECIFICATIONS

Model Number	Standard Port Size	Nominal Pump Rating (100 SSU & below)			Displacement		Maximum Differential Pressure		Maximum Recommended Temperature for Standard Pump		Approx. Shipping Weight with Grease	
	Inches	GPM	m ³ /h	RPM	USG/rev.	l/rev.	PSIG	BAR	°F	°C	Lbs.	Kg.
SLAS	¾	14	3.18	1400	0.0103	0.039	218	15	300	150	26	12
SLAL	1	22	5	1400	0.0156	0.059	145	10	300	150	33	15
SLBS	1	25.7	5.8	1200	0.0214	0.081	218	15	300	150	44	20
SLBL	1½	38.7	8.8	1200	0.0322	0.122	145	10	300	150	49	22
SLCS	1½	53.6	12.2	1200	0.0446	0.169	218	15	300	150	77	35
SLCL	2	80.5	18.3	1200	0.0671	0.254	145	10	300	150	84	38
SLDS	1½	93	20.5	1000	0.093	0.352	218	15	300	150	143	65
SLDL	2	139.5	31.7	1000	0.1395	0.528	145	10	300	150	154	70
SLES	2	154.7	35.1	800	0.1934	0.732	218	15	300	150	273	124
SLEL	3	232.3	52.8	800	0.2903	1.099	145	10	300	150	298	135
SLFS	3	241.5	54.8	600	0.4026	1.542	218	15	300	150	399	181
SLFL	4	362.2	82.3	600	0.6036	2.285	145	10	300	150	452	205
SLGS	4	502.5	114.1	600	0.8374	3.17	218	15	300	150	772	350
SLGL	6	753.5	171.1	600	1.2559	4.754	145	10	300	150	842	382

Section	1725
Page	1725.4
Issue	B

**ROTARY LOBE PRODUCT LINE:
STAINLESS STEEL PUMPS**
SteriLobe® Series

DIMENSIONS – ALL MODELS – INCHES



Model	A	B1	B2	B3	B4	B5	C	D	E	F	G	HB	HS	HT
SLAS	0.75	2.72	3.27	N/A	3.82	3.82	3.48	6.32	0.89	0.55	1	2.4	2.94	4.56
SLAL	1	3.27	3.27	N/A	3.82	3.82	3.48	6.32	0.89	0.55	1	2.4	2.94	4.56
SLBS	1	3.98	3.98	4.53	4.53	4.53	4	7.39	0.89	0.79	1.43	2.66	3.35	5.33
SLBL	1.5	3.98	4.84	4.53	4.53	4.53	4	7.39	0.89	0.79	1.43	2.66	3.35	5.33
SLCS	1.5	4.21	5.08	4.76	4.76	4.76	5.09	9.19	1.16	0.94	1.81	3.41	3.92	6.76
SLCL	2	4.21	5.08	4.76	4.76	5.08	5.09	9.19	1.16	0.94	1.81	3.41	3.92	6.76
SLDS	1.5	5	5.47	5.16	5.16	5.16	6.16	11.57	1.14	1.57	3.12	3.94	4.79	8.46
SLDL	2	5	5.47	5.16	5.16	5.47	6.16	11.57	1.14	1.57	3.12	3.94	4.79	8.46
SLES	2	6.22	6.57	6.26	6.26	6.57	7.56	14.17	1.69	1.89	3.15	4.8	7.09	10.31
SLEL	3	6.22	6.57	6.26	6.57	6.77	7.56	14.17	1.69	1.89	3.15	4.8	7.09	10.31
SLFS	3	6.81	8.07	7.36	7.68	7.87	8.5	16.1	1.69	1.97	3.15	5.35	7.52	11.65
SLFL	4	6.97	8.66	7.36	7.68	7.87	8.5	16.1	1.69	1.97	3.15	5.35	7.52	11.65
SLGS	4	7.64	9.33	8.03	8.35	8.54	9.88	18.9	1.69	2.36	4.25	6.14	7.95	13.62
SLGL	6	7.64	9.33	8.03	8.35	8.54	9.88	18.9	1.69	2.36	4.25	6.14	7.95	13.62

Model	J	K	L	M	N	P	Q	R	S	T	U	V	W	X
SLAS	0.79	0.2	9.36	3.3	4.67	2.44	0.43	3.31	5.89	5.06	0.35	6.17	6.96	1.08
SLAL	0.79	0.2	9.7	3.47	4.67	2.44	0.43	3.31	5.89	5.06	0.35	6.17	6.96	1.08
SLBS	1.38	0.24	11.9	3.35	6.84	2.44	0.43	3.31	6.72	5.89	0.35	7.2	7.99	1.34
SLBL	1.38	0.24	12.37	3.53	6.84	2.44	0.43	3.31	6.72	5.89	0.35	7.2	7.99	1.34
SLCS	1.18	0.31	13.21	4.84	6.41	4.88	0.55	5.98	7.85	6.71	0.51	9.03	10.17	1.67
SLCL	1.18	0.31	13.76	5.15	6.41	4.88	0.55	5.98	7.85	6.71	0.51	9.03	10.17	1.67
SLDS	1.97	0.47	16.42	5.1	9.14	4.88	0.55	5.98	9.57	8.43	0.51	11.26	12.34	2.26
SLDL	1.97	0.47	17.15	5.5	9.14	4.88	0.55	5.98	9.57	8.43	0.51	11.26	12.34	2.26
SLES	2.36	0.55	19.45	6.1	10.85	6.69	0.63	7.95	14.17	12.6	0.79	13.94	15.12	2.76
SLEL	2.36	0.55	20.39	6.57	10.85	6.69	0.63	7.95	14.17	12.6	0.79	13.94	15.12	2.76
SLFS	2.56	0.55	22.52	6.95	12.01	6.69	0.63	7.95	15.04	13.46	0.79	15.83	17.01	3.15
SLFL	2.56	0.55	23.86	7.54	12.01	6.69	0.63	7.95	15.04	13.46	0.79	15.83	17.01	3.15
SLGS	3.54	0.71	29.21	8.31	16.5	6.69	0.63	7.95	15.94	14.42	0.79	18.58	19.76	3.74
SLGL	3.54	0.71	31.3	9.33	16.5	6.69	0.63	7.95	15.94	14.42	0.79	18.58	19.76	3.74

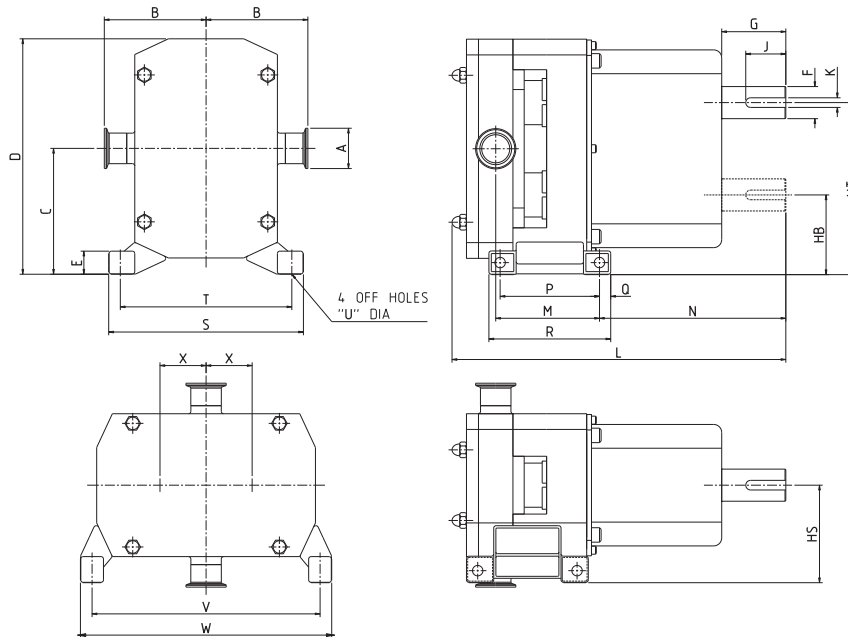
Dimensions given are for guidance only and should **not** be used for installation purposes. Certified dimensions will be supplied on request.

ROTARY LOBE PRODUCT LINE: STAINLESS STEEL PUMPS

SteriLobe® Series

Section	1725
Page	1725.5
Issue	B

DIMENSIONS – ALL MODELS – MILLIMETERS



Model	A	B1	B2	B3	B4	B5	C	D	E	F	G	HB	HS	HT
SLAS	19	69	83	N/A	97	97	88.4	160.5	22.5	14	25.4	60.9	74.8	115.9
SLAL	25	83	83	N/A	97	97	88.4	160.5	22.5	14	25.4	60.9	74.8	115.9
SLBS	25	101	101	115	115	115	101.5	187.7	22.5	20	36.3	67.5	85.2	135.5
SLBL	40	101	123	115	115	115	101.5	187.7	22.5	20	36.3	67.5	85.2	135.5
SLCS	40	107	129	121	121	121	129.2	233.4	29.5	24	46.1	86.7	99.6	171.7
SLCL	50	107	129	121	121	129	129.2	233.4	29.5	24	46.1	86.7	99.6	171.7
SLDS	40	127	139	131	131	131	156.5	294	29	40	79.2	100	121.7	215
SLDL	50	127	139	131	131	139	156.5	294	29	40	79.2	100	121.7	215
SLES	50	158	167	159	159	167	192	360	43	48	80	122	180	262
SLEL	80	158	167	159	167	172	192	360	43	48	80	122	180	262
SLFS	80	173	205	187	195	200	216	409	43	50	80	136	191	296
SLFL	100	177	220	187	195	200	216	409	43	50	80	136	191	296
SLGS	100	194	237	204	212	217	251	480	43	60	108	156	202	346
SLGL	150	194	237	204	212	217	251	480	43	60	108	156	202	346

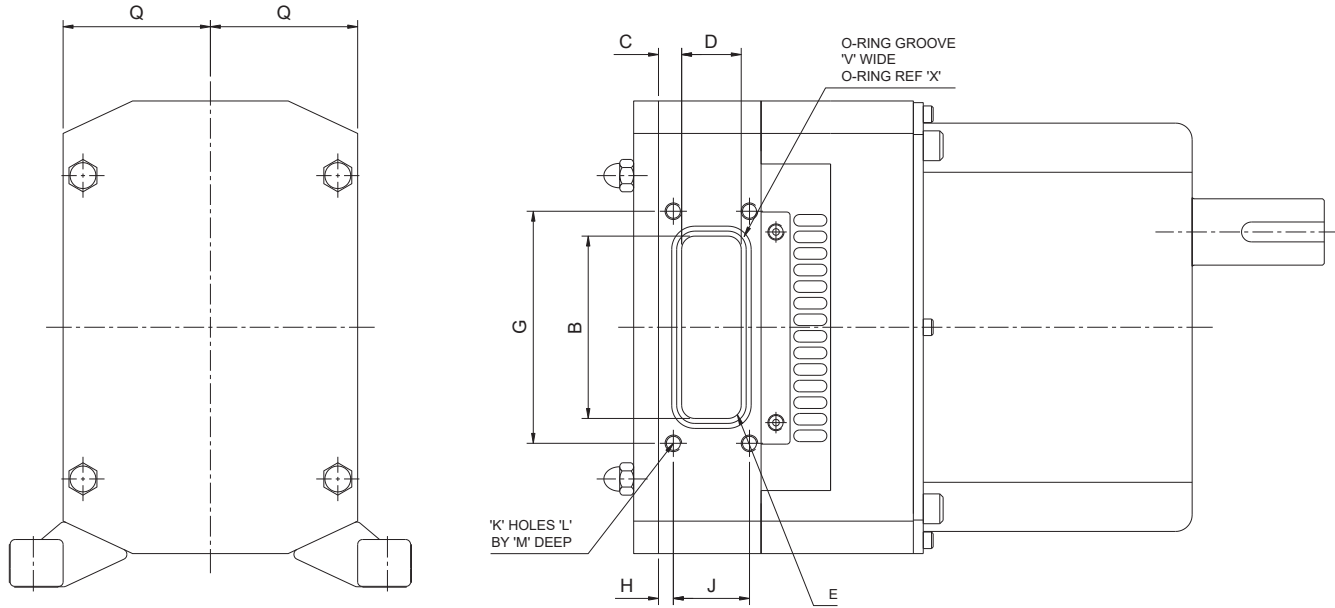
Model	J	K	L	M	N	P	Q	R	S	T	U	V	W	X
SLAS	20	5	237.7	83.8	118.5	62	11	84	149.6	128.6	9	156.7	176.7	27.5
SLAL	20	5	246.5	88.2	118.5	62	11	84	149.6	128.6	9	156.7	176.7	27.5
SLBS	35	6	302.3	85	173.8	62	11	84	170.6	149.6	9	182.9	202.9	34
SLBL	35	6	314.3	89.7	173.8	62	11	84	170.6	149.6	9	182.9	202.9	34
SLCS	30	8	335.6	122.9	162.7	124	14	152	199.4	170.4	13	229.3	258.3	42.5
SLCL	30	8	349.6	130.9	162.7	124	14	152	199.4	170.4	13	229.3	258.3	42.5
SLDS	50	12	417	129.5	232.2	124	14	152	243	214	13	286	313.5	57.5
SLDL	50	12	435.5	139.8	232.2	124	14	152	243	214	13	286	313.5	57.5
SLES	60	14	494	155	276	170	16	202	360	320	20	354	384	70
SLEL	60	14	518	167	276	170	16	202	360	320	20	354	384	70
SLFS	65	14	572	176.5	305	170	16	202	382	342	20	402	432	80
SLFL	65	14	606	191.5	305	170	16	202	382	342	20	402	432	80
SLGS	90	18	742	211	419	170	16	202	405	366.2	20	472	502	95
SLGL	90	18	795	237	419	170	16	202	405	366.2	20	472	502	95

Dimensions given are for guidance only and should **not** be used for installation purposes. Certified dimensions will be supplied on request.

Section	1725
Page	1725.6
Issue	B

**ROTARY LOBE PRODUCT LINE:
STAINLESS STEEL PUMPS**
SteriLobe® Series

DIMENSIONS – RECTANGULAR INLET (MM)



MODEL	B	C	D	E	G	H	J	K	L	M	Q	V	X
SLAS	64	6	11.5	5	80.2 79.8	11.75	N/A	2	M6	8	45	3	134
SLAL	64	6	20	5	80.2 79.8	6	20.2 19.8	4	M6	8	45	3	137
SLBS	64	8	15	5	86.2 85.8	7	17.2 16.8	4	M8	10	60	3	137
SLBL	64	8	27	5	86.2 85.8	7	29.2 28.8	4	M8	10	60	3	141
SLCS	64	9	21	8	102.2 101.8	9	21.2 20.8	4	M8	10	66.5	3	144
SLCL	80	9	35	8	102.2 101.8	9	35.2 34.8	4	M8	10	66.5	3	150
SLDS	110	11	23	8	140.3 139.7	10	25.3 24.7	4	M10	12	89	3	152
SLDL	110	11	42	8	140.3 139.7	12	40.3 39.7	4	M10	12	89	3	154
SLES	138	11	34	8	188.3 187.7	10	36.3 35.7	4	M12	14	117	3	156
SLEL	138	11	58	8	188.3 187.7	10	60.3 59.7	4	M12	14	117	3	158
SLFS	156	11	56	8	216.3 215.7	15	48.3 47.7	4	M16	18	132	3	160
SLFL	156	11	90	8	216.3 215.7	15	82.3 81.7	4	M16	18	132	3	163
SLGS	188	11	96	8	248.3 247.7	20	78.3 77.7	4	M16	18	149	3	167
SLGL	188	11	149	8	248.3 247.7	20	131.3 130.7	4	M16	18	149	3	173

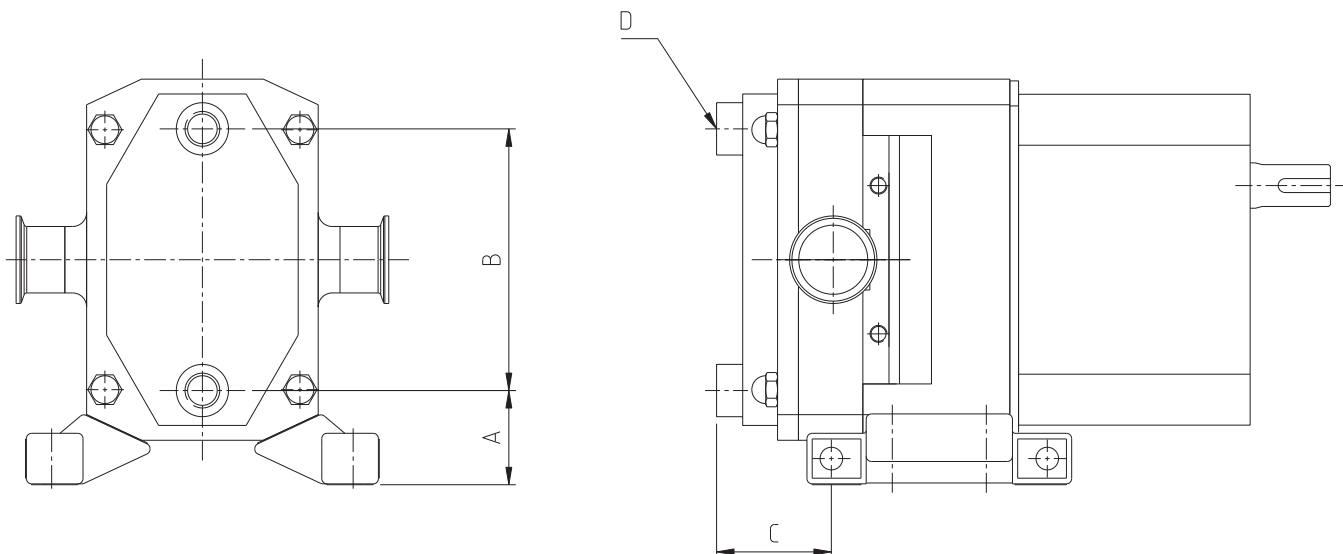
Dimensions given are for guidance only and should **not** be used for installation purposes. Certified dimensions will be supplied on request.

ROTARY LOBE PRODUCT LINE: STAINLESS STEEL PUMPS

SteriLobe® Series

Section	1725
Page	1725.7
Issue	B

DIMENSIONS – ALL MODELS – FRONT COVER JACKET (MM)



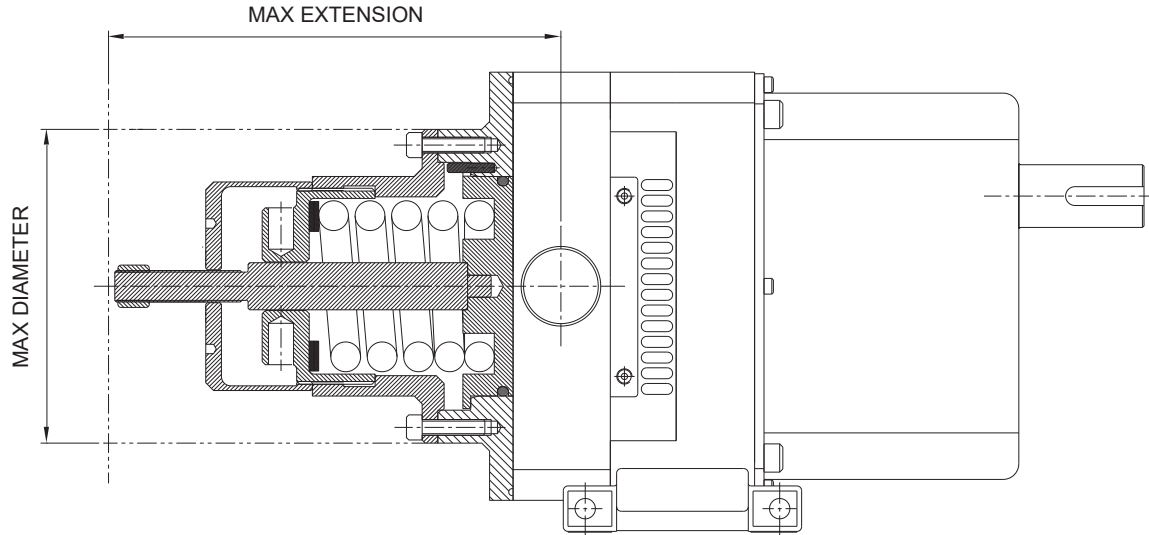
MODEL	A	B	C	D
SLAS	43	90	67.3	1/4" BSP
SLAL			76	
SLBS	46.5	110	83.5	1/2" BSP
SLBL			95.5	
SLCS	54	150	65.9	1/2" BSP
SLCL			79.9	
SLDS	52	210	77	1/2" BSP
SLDL			96	
SLES	62	260	67.2	1/2" BSP
SLEL			91.2	
SLFS	66	300	102.5	1/2" BSP
SLFL			136.5	
SLGS	66	370	154	1/2" BSP
SLGL			207	

Dimensions given are for guidance only and should **not** be used for installation purposes. Certified dimensions will be supplied on request.

Section	1725
Page	1725.8
Issue	B

**ROTARY LOBE PRODUCT LINE:
STAINLESS STEEL PUMPS**
SteriLobe® Series

RELIEF VALVE MAXIMUM DIMENSIONS (MM)



Sterilobe® Model	Spring Loaded Integral Pressure Relief Valve	
	Maximum Diameter	Maximum Extension
SLAS	105	142
SLAL		146
SLBS	105	147
SLBL		154
SLCS	150	171
SLCL		177
SLDS	200	222
SLDL		231
SLES	200	230
SLEL		242
SLFS	265	288
SLFL		307

Note: Max Diameter may be valve body or Hand-wheel (if fitted).

Dimensions given are for guidance only and should **not** be used for installation purposes. Certified dimensions will be supplied on request.

**ROTARY LOBE PRODUCT LINE:
STAINLESS STEEL PUMPS**

SteriLobe® Series

Section	1725
Page	1725.9
Issue	B

NPSH REQUIRED

Printed performance curves are not available.

Performance curves can be electronically generated with the Viking Pump Curve Generator on vikingpump.com.

NPSHR data is available in the Viking Pump Hygienic Pump Selector Tool.
