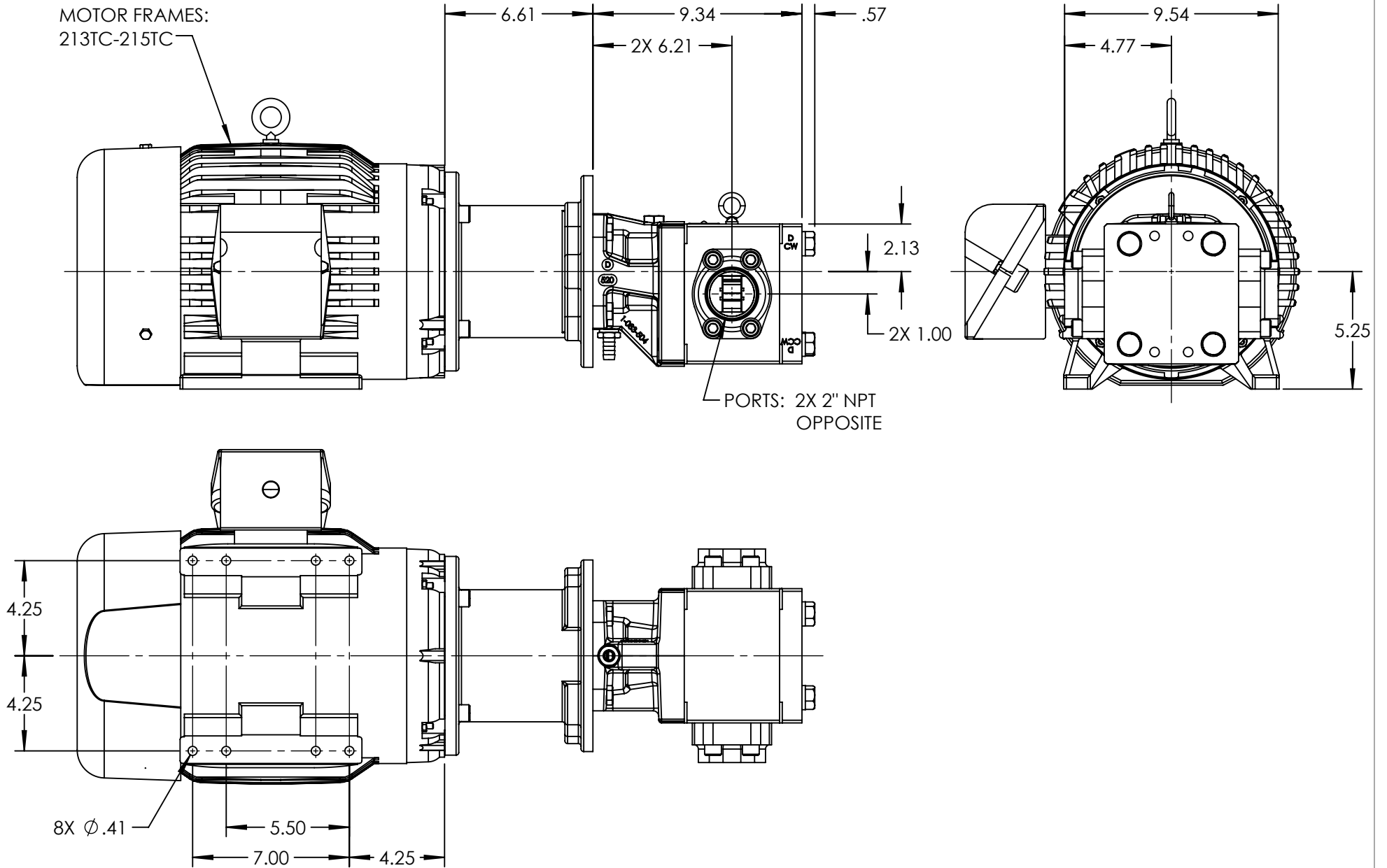


MOTOR FRAMES:
213TC-215TC



NOTES:

1. ALL DIMENSIONS ARE FOR REFERENCE ONLY.

STANDARD MODELS: GB-41009-G00-M, GB-41009-G10-M

STATE	Released	03/11/2022
DRAWN	bmanernach	3/11/2022
CHECKED	BAM	03/11/2022

DIMENSIONS ARE IN INCHES	
PROJECT:	
WAS:	



VIKING PUMP, INC.
A Unit of IDEX Corporation
Cedar Falls, IA 50613
U.S.A.

THIS DRAWING IS THE PROPERTY OF
VIKING PUMP, INC. AND IS PROPRIETARY
IN GENERAL AND DETAIL. IT SHALL NOT BE
COPIED OR ITS CONTENTS REVEALED TO
OUTSIDE PARTIES WITHOUT THE WRITTEN
CONSENT OF VIKING PUMP, INC.

3D

DWG. NO. SHEET 1 OF 1
GPV-1009-033-U

REV. A.0
03/11/2022

TORQUE AND CURRENT VS SPEED CURVE

Three Phase Induction Motor - Squirrel Cage



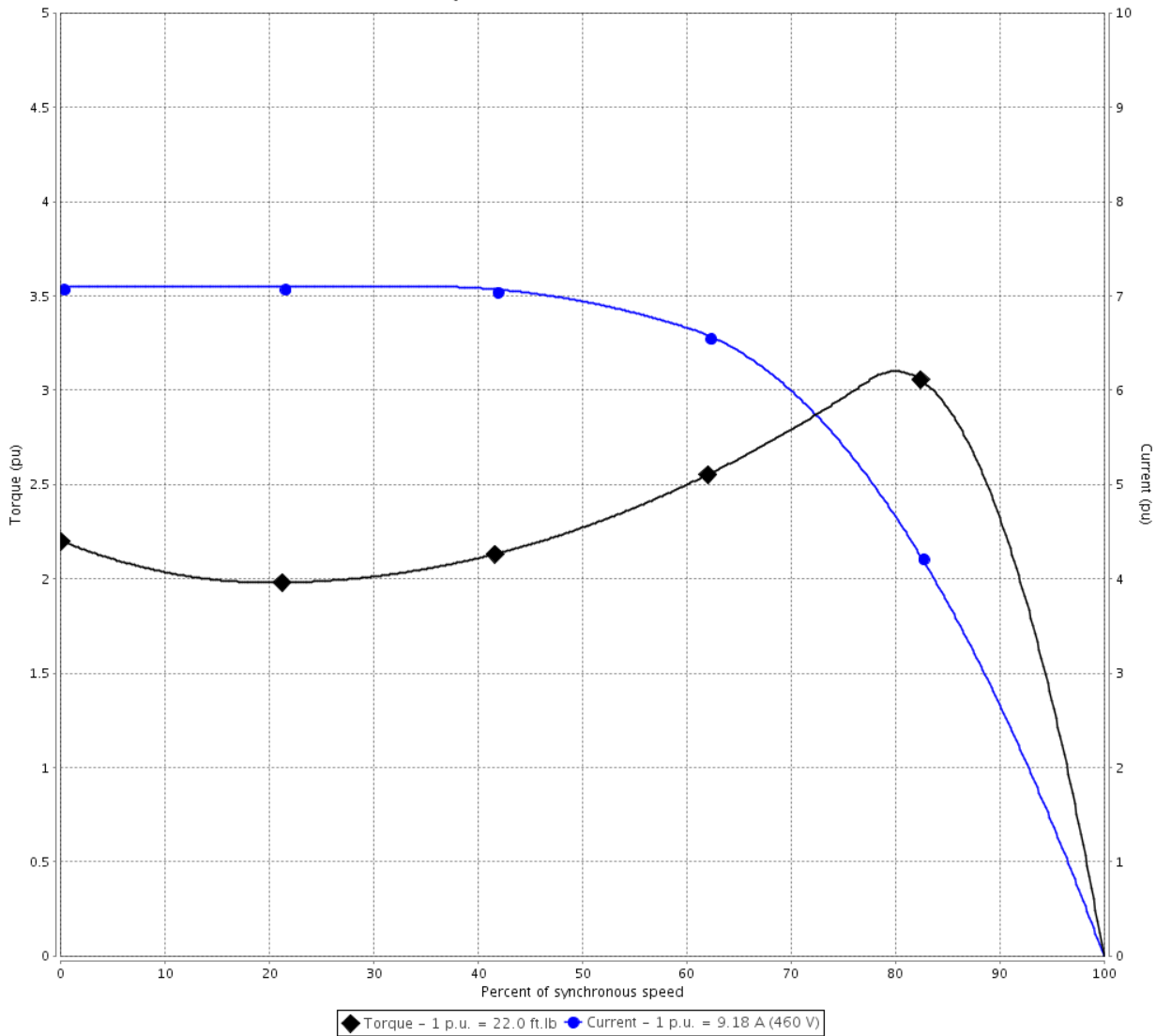
Customer :

Product line : W22 NEMA Premium Efficiency
Three-Phase

Product code : 12445969

Catalog # : 00718ET3E213TC-W22

TORQUE AND CURRENT VS SPEED CURVE



Performance : 208-230/460 V 60 Hz 4P

Rated current	: 19.9-18.4/9.18 A	Moment of inertia (J)	: 1.34 sq.ft.lb
LRC	: 7.1	Duty cycle	: Cont.(S1)
Rated torque	: 22.0 ft.lb	Insulation class	: F
Locked rotor torque	: 220 %	Service factor	: 1.25
Breakdown torque	: 310 %	Temperature rise	: 80 K
Rated speed	: 1765 rpm	Design	: B

Locked rotor time : 36s (cold) 20s (hot)

Rev.	Changes Summary	Performed	Checked	Date
Performed by			Page 2 / 6	Revision
Checked by				
Date	06/11/2019			

LOAD PERFORMANCE CURVE

Three Phase Induction Motor - Squirrel Cage

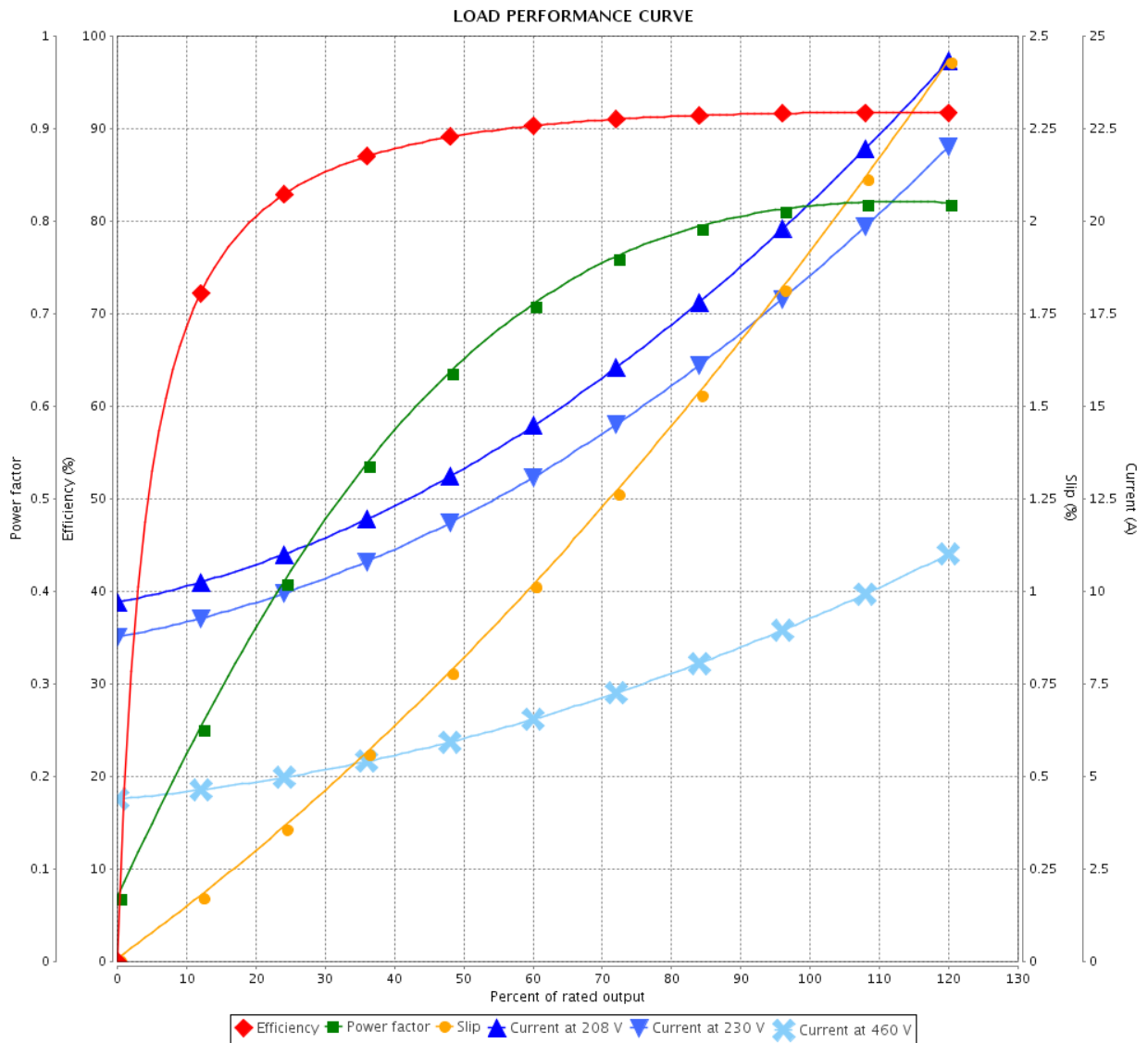


Customer :

Product line : W22 NEMA Premium Efficiency Three-Phase

Product code : 12445969

Catalog # : 00718ET3E213TC-W22



Performance : 208-230/460 V 60 Hz 4P

Rated current : 19.9-18.4/9.18 A
 LRC : 7.1
 Rated torque : 22.0 ft.lb
 Locked rotor torque : 220 %
 Breakdown torque : 310 %
 Rated speed : 1765 rpm

Moment of inertia (J) : 1.34 sq.ft.lb
 Duty cycle : Cont.(S1)
 Insulation class : F
 Service factor : 1.25
 Temperature rise : 80 K
 Design : B

Rev.	Changes Summary	Performed	Checked	Date
Performed by		Page		Revision
Checked by		3 / 6		
Date		06/11/2019		

THERMAL LIMIT CURVE



Three Phase Induction Motor - Squirrel Cage

Customer :

Product line : W22 NEMA Premium Efficiency
Three-Phase

Product code : 12445969

Catalog # : 00718ET3E213TC-W22

Performance : 208-230/460 V 60 Hz 4P

Rated current : 19.9-18.4/9.18 A
LRC : 7.1
Rated torque : 22.0 ft.lb
Locked rotor torque : 220 %
Breakdown torque : 310 %
Rated speed : 1765 rpm

Moment of inertia (J) : 1.34 sq.ft.lb
Duty cycle : Cont.(S1)
Insulation class : F
Service factor : 1.25
Temperature rise : 80 K
Design : B

Heating constant

Cooling constant

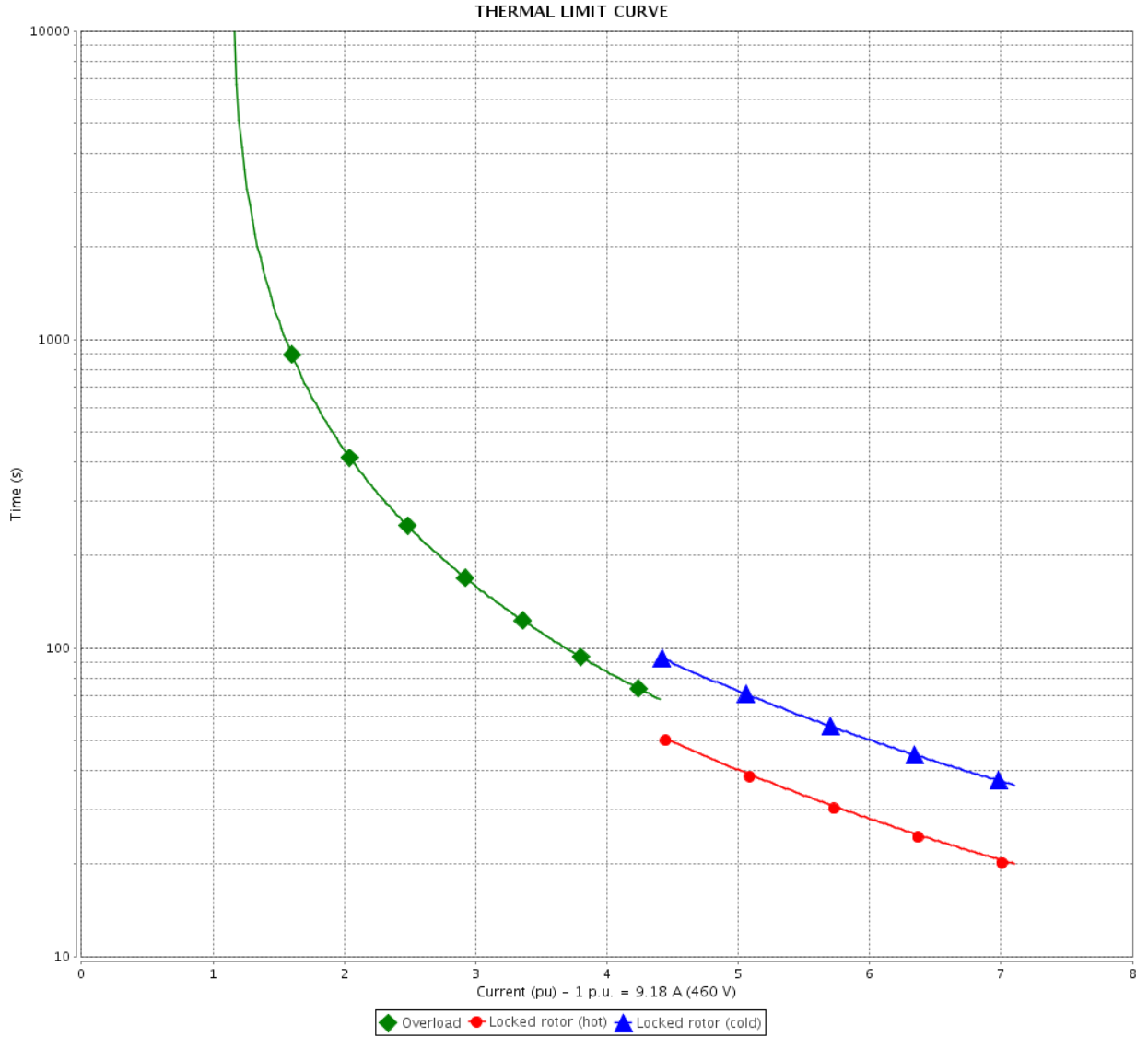
Rev.	Changes Summary	Performed	Checked	Date
Performed by				
Checked by			Page	Revision
Date	06/11/2019		4 / 6	

THERMAL LIMIT CURVE

Three Phase Induction Motor - Squirrel Cage



Customer : _____



Rev.	Changes Summary	Performed	Checked	Date
Performed by		Page 5 / 6		Revision
Checked by				
Date				

VFD OPERATION CURVE

Three Phase Induction Motor - Squirrel Cage

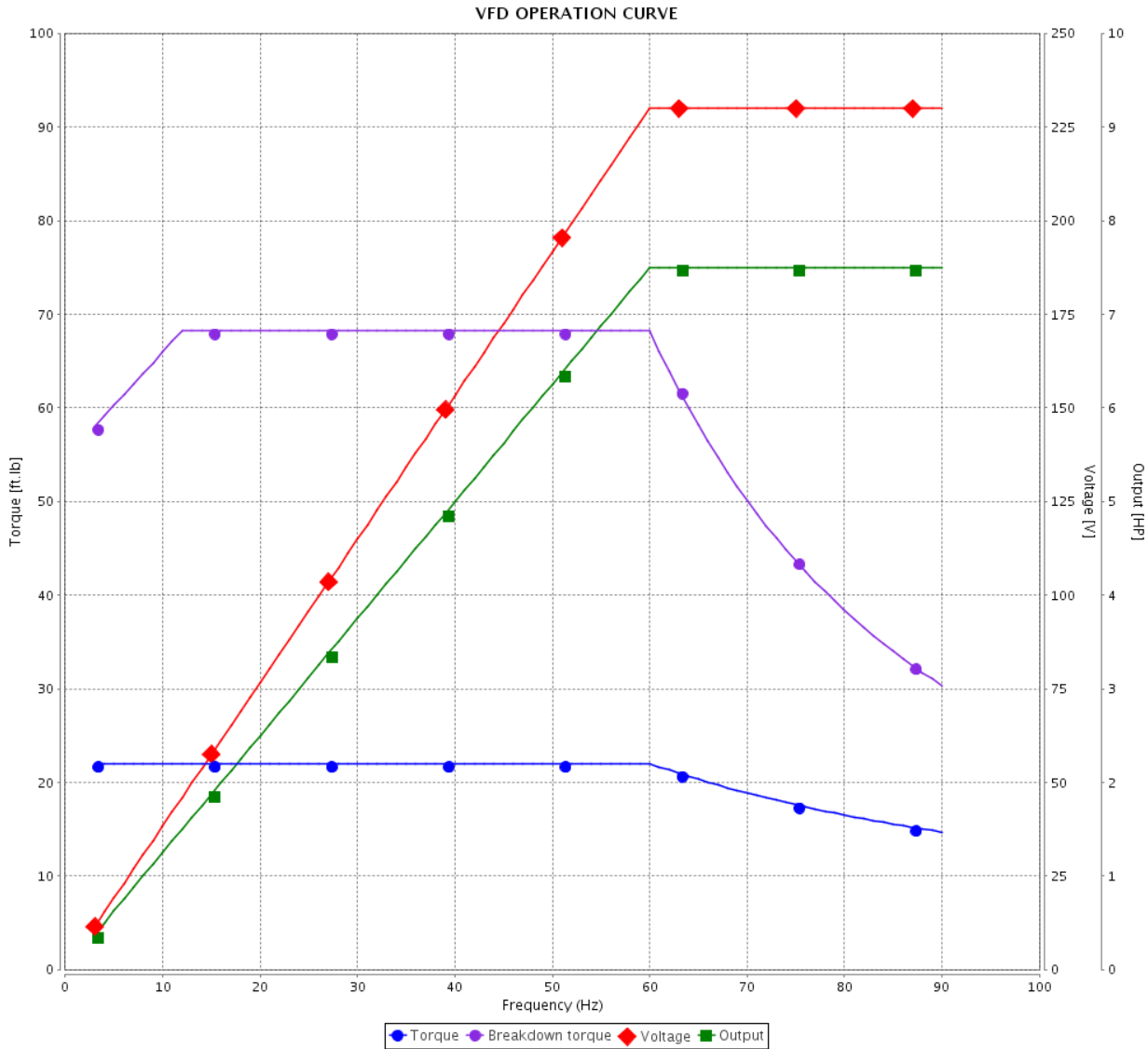


Customer :

Product line : W22 NEMA Premium Efficiency Three-Phase

Product code : 12445969

Catalog # : 00718ET3E213TC-W22



Performance : 208-230/460 V 60 Hz 4P

Rated current : 19.9-18.4/9.18 A
 LRC : 7.1
 Rated torque : 22.0 ft.lb
 Locked rotor torque : 220 %
 Breakdown torque : 310 %
 Rated speed : 1765 rpm

Moment of inertia (J) : 1.34 sq.ft.lb
 Duty cycle : Cont.(S1)
 Insulation class : F
 Service factor : 1.25
 Temperature rise : 80 K
 Design : B

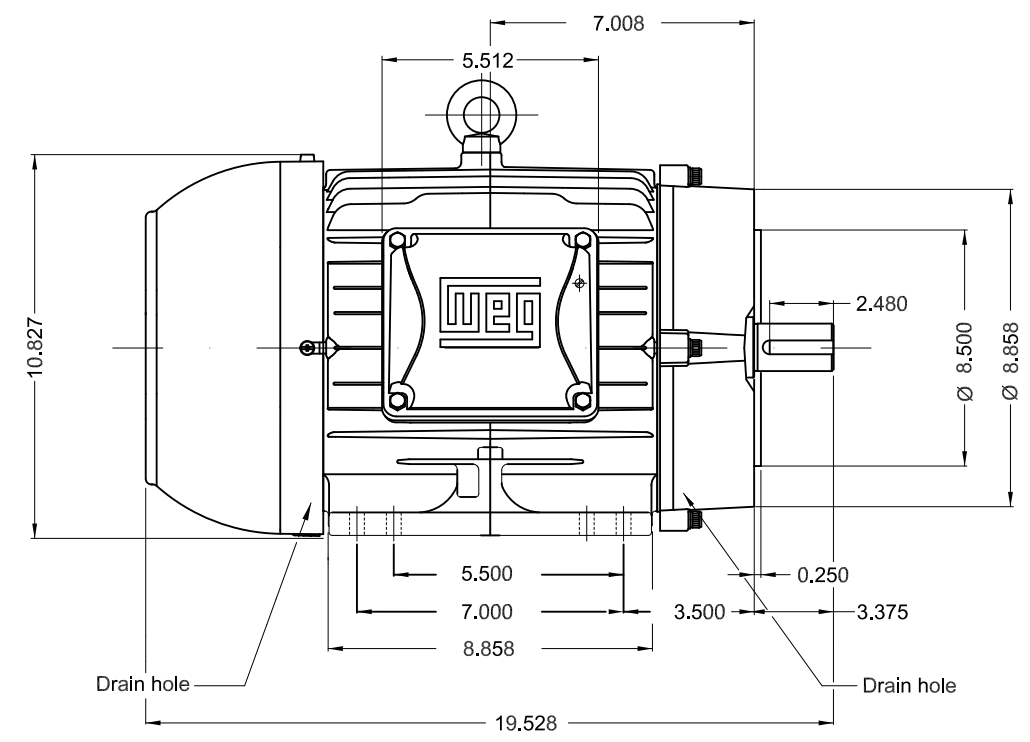
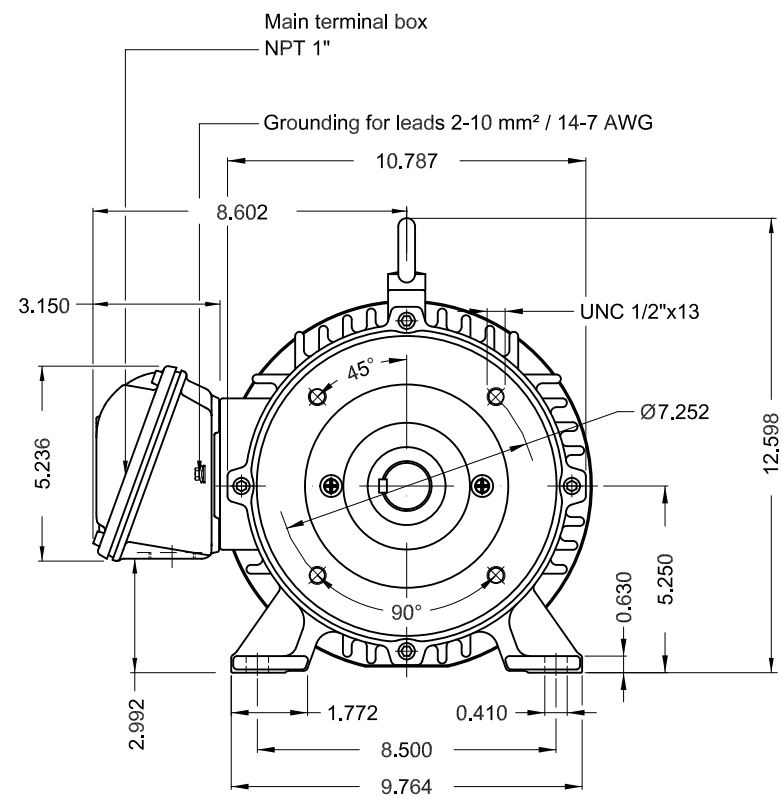
Rev.	Changes Summary	Performed	Checked	Date
Performed by			Page 6 / 6	Revision
Checked by				
Date	06/11/2019			

1 2 3 4 5 6

A

B

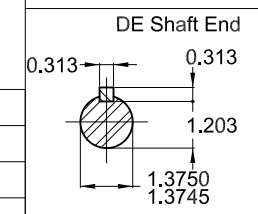
C



D

E

Bearing cap
Color RAL 5009
Painting plan 207A
Mounting B34R(D)



7.5 HP 04 Poles 60Hz A

ECM	LOC	SUMMARY OF MODIFICATIONS	EXECUTED	CHECKED	RELEASED	DATE	VER
EXECUTED	PIRWBUSER	THREE PHASE W22 MOTOR - NEMA PREMIUM EFF FRAME 213/5TC IP55 TEFC					
CHECKED							
RELEASED							
REL DT.	WMO		Jaragua do Sul	Product Engineering	SHEET	1 / 1	

PREVIEW
WDD



**W22**

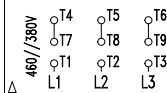
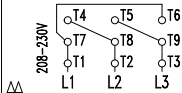
CC029A

® Inverter Duty Motor
Severe Duty

12445969

MADE IN MEXICO MODEL 00718ET3E213TC-W22

PH 3	FR 213/5TC	HP(kW) 7.5(5.5)	Hz 60	SF 1.25	PF 0.82
V 230/460	A 18.4/9.18	RPM 1765	INS. CL. F	ΔT 80 K	IP55
NEMA NOM EFF 91.7 %			DES B DUTY CONT.		AMB 40°C
ENCL TEFC	SFA 23.0/11.5	USABLE @208V 19.9 A	SF 1.15	SFA 22.9	
7.5HP 5.5kW 50Hz 380V 11.0A 1455RPM SF1.25 EFF 89.6% (IE3)					CODE H



→6308-ZZ

→6207-ZZ

MOBIL POLYREX EM

ALT 1000 m.a.s.l. | 168 Lbs

For 60Hz: Class I, Div 2, Gr. A, B, C and D - T3
Class I, Zone 2, IIC - T3

Class II, Div 2, Gr. F and G - T4

For use on PWM, Gr. A, B, C, D and F
VT 1000:1, CT 20:1, 1.0SF, T3A



FOR SAFE AREA
MOD.TE1BFOXON