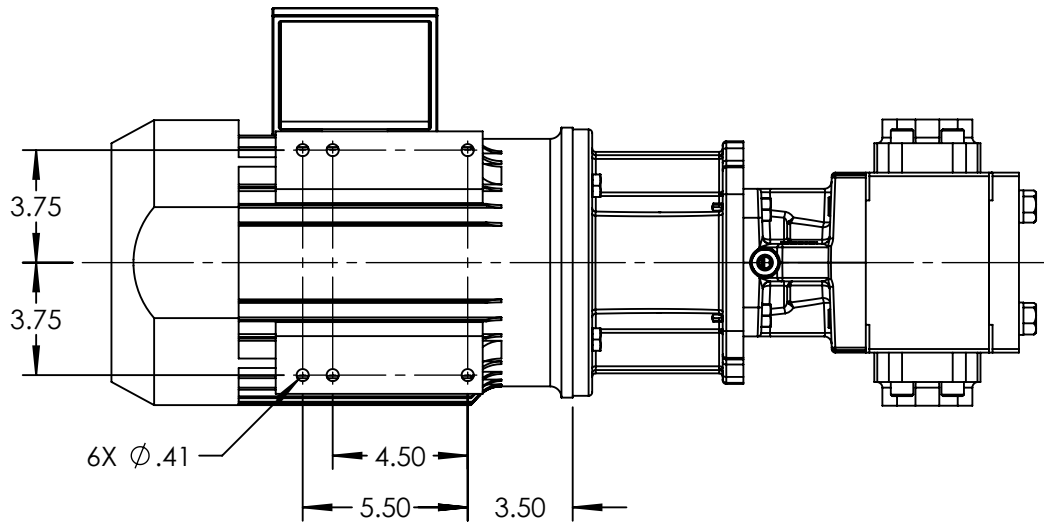
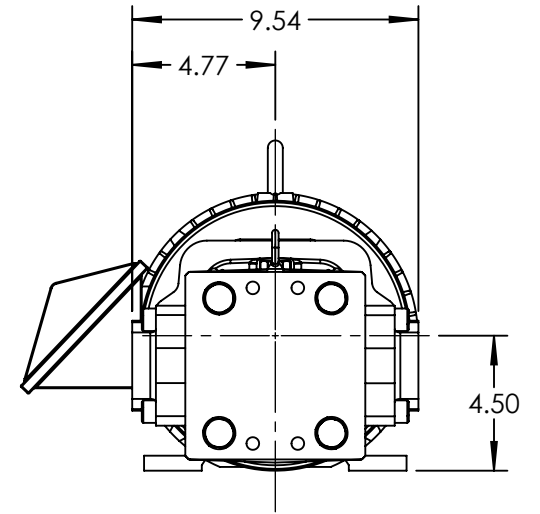
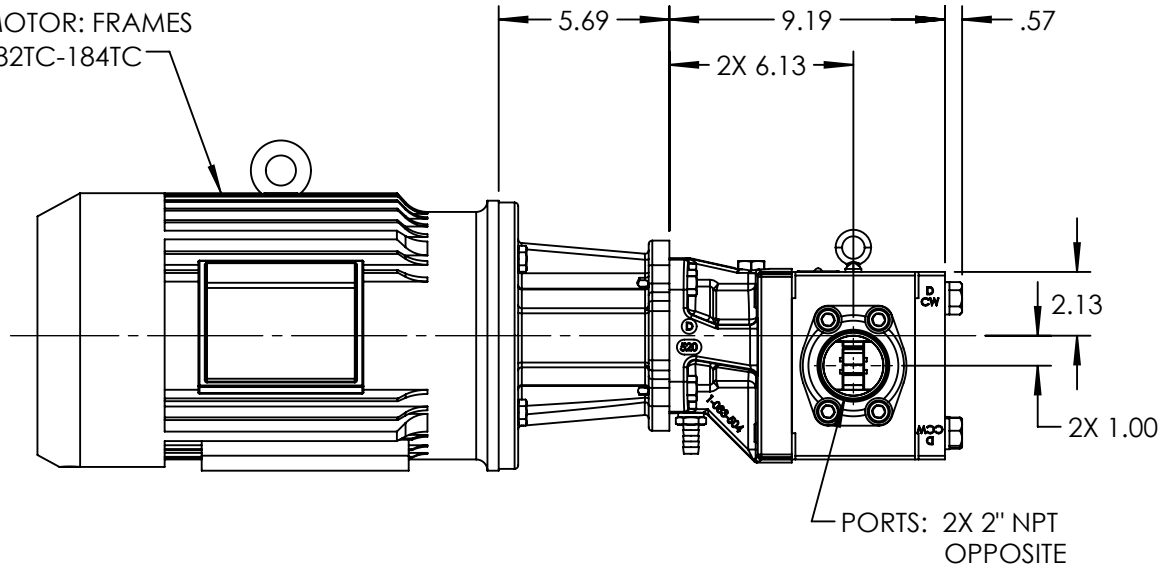


MOTOR: FRAMES
182TC-184TC



STANDARD MODELS: GB-41007-G00-M, GB-41007-G10-M

NOTES:

1. ALL DIMENSIONS ARE FOR REFERENCE ONLY.

STATE	Released	05/19/2022
DRAWN	bmanernach	5/19/2022
CHECKED	BAM	05/19/2022

DIMENSIONS ARE IN INCHES	
PROJECT:	
WAS:	



VIKING PUMP, INC.
A Unit of IDEX Corporation
Cedar Falls, IA 50613
U.S.A.

THIS DRAWING IS THE PROPERTY OF VIKING PUMP, INC. AND IS PROPRIETARY IN GENERAL AND DETAIL. IT SHALL NOT BE COPIED OR ITS CONTENTS REVEALED TO OUTSIDE PARTIES WITHOUT THE WRITTEN CONSENT OF VIKING PUMP, INC.

3D

DWG. NO. GPV-1007-005-U
SHEET 1 OF 1

REV. A.0
05/19/2022



No.:

Date: 09-DEC-2015

Customer : Diverse Energy Systems, LLC

TECHNICAL PROPOSAL

Three-phase induction motor - Squirrel cage rotor

Product line : W22 NEMA Premium - Ball Bearings

Catalog Number : 00518ET3E184TC-W22

List Price : \$ Contact Us!

Notes:

Performed by:

Checked:



No.:

Date: 09-DEC-2015

DATA SHEET

Three-phase induction motor - Squirrel cage rotor

Customer : Diverse Energy Systems, LLC
Product line : W22 NEMA Premium - Ball Bearings

Frame : 182/4T
Output : 5 HP
Frequency : 60 Hz
Poles : 4
Full load speed : 1755
Slip : 2.50 %
Voltage : 208-230/460 V
Rated current : 14.3-12.9/6.45 A
Locked rotor current : 92.9/46.4 A
Locked rotor current (I_L/I_n) : 7.2
No-load current : 6.40/3.20 A
Full load torque : 14.8 lb.ft
Locked rotor torque : 230 %
Breakdown torque : 320 %
Design : B
Insulation class : F
Temperature rise : 80 K
Locked rotor time : 15 s (hot)
Service factor : 1.25
Duty cycle : S1
Ambient temperature : -20°C - +40°C
Altitude : 1000
Degree of Protection : IP55
Approximate weight : 95 lb
Moment of inertia : 0.40033 sq.ft.lb
Noise level : 56 dB(A)

	D.E.	N.D.E.	Load	Power factor	Efficiency (%)
Bearings	6207 ZZ	6206 ZZ	100%	0.80	89.5
Regreasing interval	---	---	75%	0.74	89.5
Grease amount	---	---	50%	0.62	88.5

Notes:

Performed by

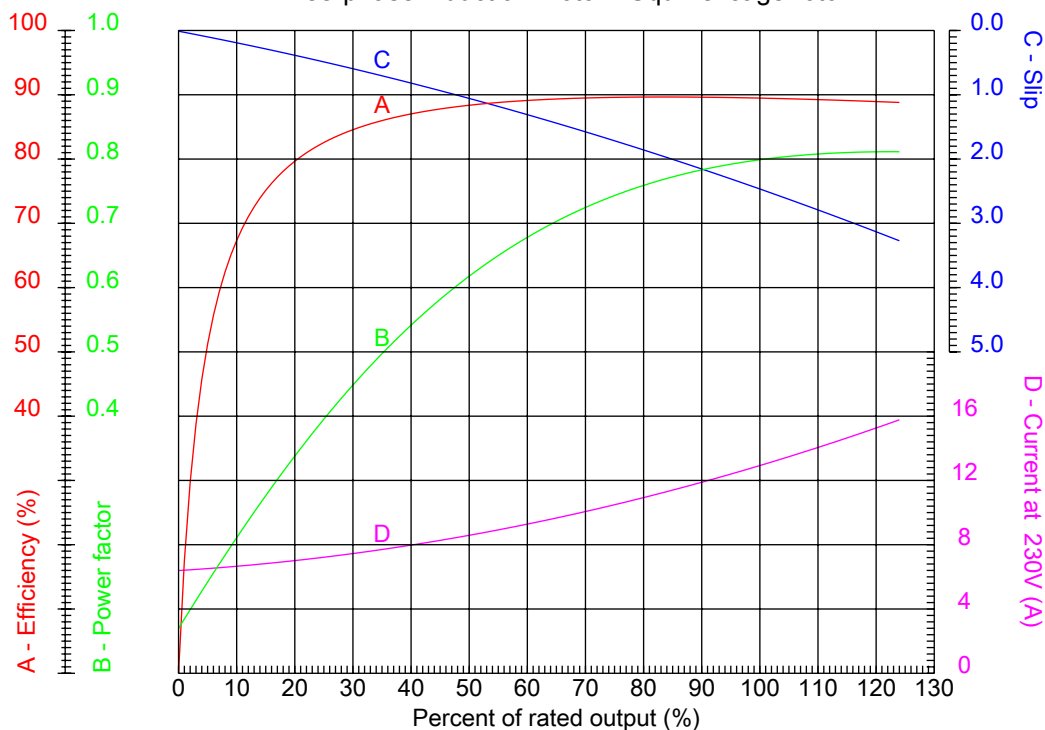
Checked



No.:

Date: 09-DEC-2015

PERFORMANCE CURVES RELATED TO RATED OUTPUT Three-phase induction motor - Squirrel cage rotor



Customer : Diverse Energy Systems, LLC
Product line : W22 NEMA Premium - Ball Bearings

Frame : 182/4T	Locked rotor current (I _l /I _n) : 7.2
Output : 5 HP	Duty cycle : S1
Frequency : 60 Hz	Service factor : 1.25
Full load speed : 1755	Design : B
Voltage : 208-230/460 V	Locked rotor torque : 230 %
Rated current : 14.3-12.9/6.45 A	Breakdown torque : 320 %
Insulation class : F	

Notes:

Performed by

Checked

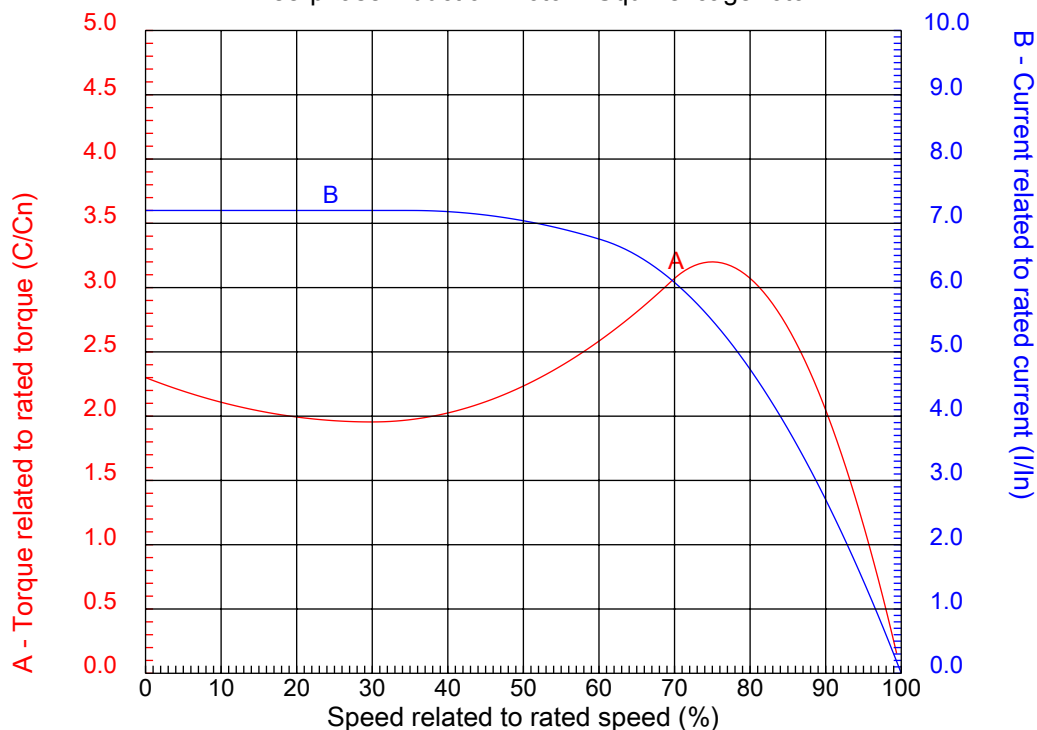


No.:

Date: 09-DEC-2015

CHARACTERISTIC CURVES RELATED TO SPEED

Three-phase induction motor - Squirrel cage rotor



Customer : Diverse Energy Systems, LLC
Product line : W22 NEMA Premium - Ball Bearings

Frame	: 182/4T	Locked rotor current (I _l /I _n)	: 7.2
Output	: 5 HP	Duty cycle	: S1
Frequency	: 60 Hz	Service factor	: 1.25
Full load speed	: 1755	Design	: B
Voltage	: 208-230/460 V	Locked rotor torque	: 230 %
Rated current	: 14.3-12.9/6.45 A	Breakdown torque	: 320 %
Insulation class	: F		

Notes:

Performed by

Checked

1 2 3 4 5 6 7 8

A

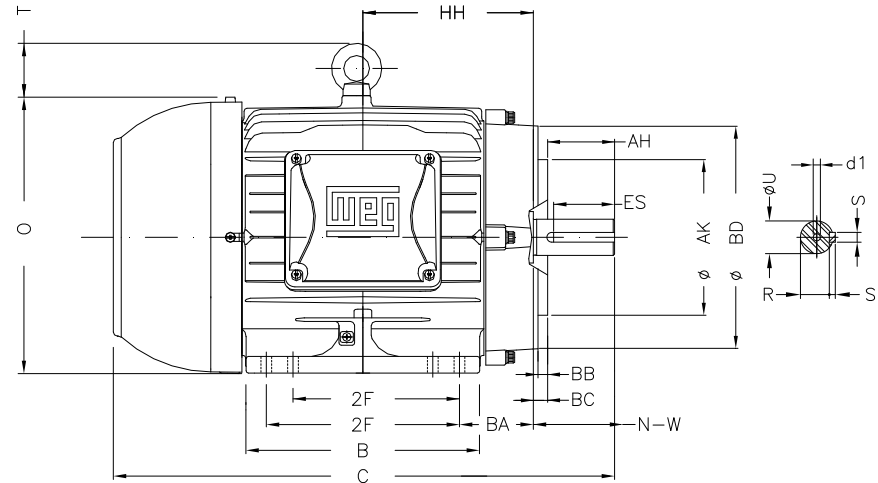
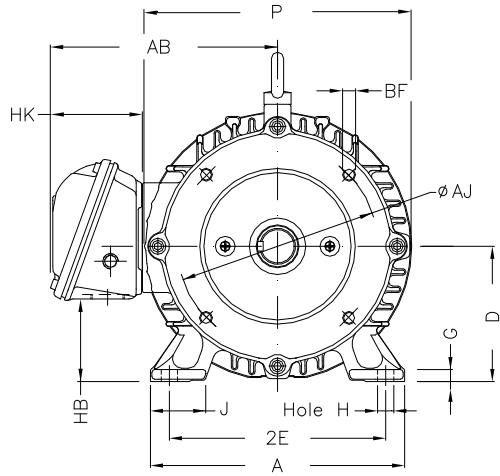
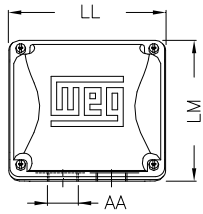
B

C

D

E

F



Notes:

Performed by:

Checked:

Customer: Diverse Energy Systems, LLC

W22 NEMA Premium - Ball Bearings

Three-phase induction motor
Frame 182/4T - IP55

09-DEC-2015



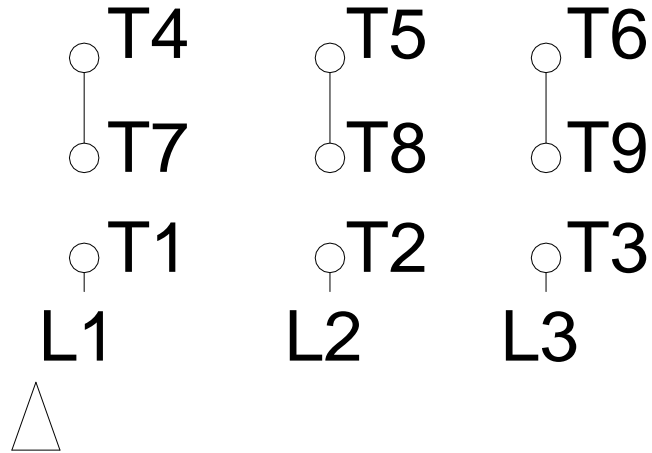
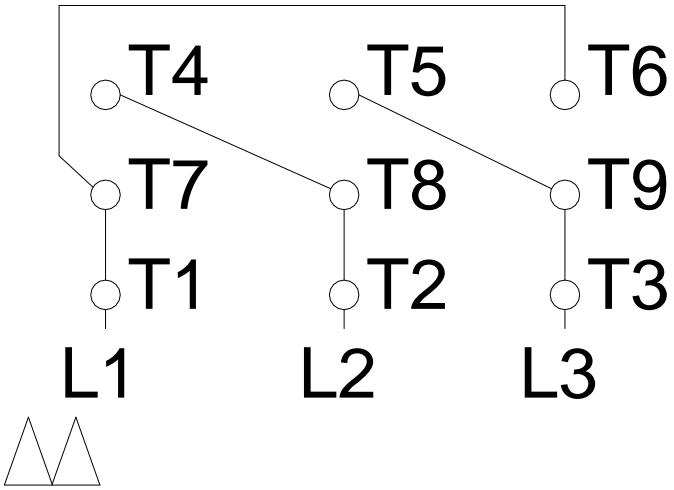
2E	J	A	P	AB
7.500	1.614	8.661	8.740	7.565
2F	B	BA	FBA	U
4.500/5.500	6.969	2.750	5.057	1.125
N-W	ES	S	R	depth
2.750	1.969	0.250	0.984	0.250
D	G	HB	O	T
4.500	0.394	2.236	9.343	1.772
HF	HH	HK	H	C
4.500	5.500	3.150	0.406	15.860
FC	LL	LM	AA	d1
18.307	5.512	5.236	NPT 1"	A 4
Flange	AJ	AK	BD	BF
FC-184	7.250	8.500	8.875	UNC 1/2"x13
BB	BC	AH		
0.250	0.125	2.625		

1 2 3 4 5 6 7 8

LOW VOLTAGE

HIGH VOLTAGE

A
B
C
D
E
F



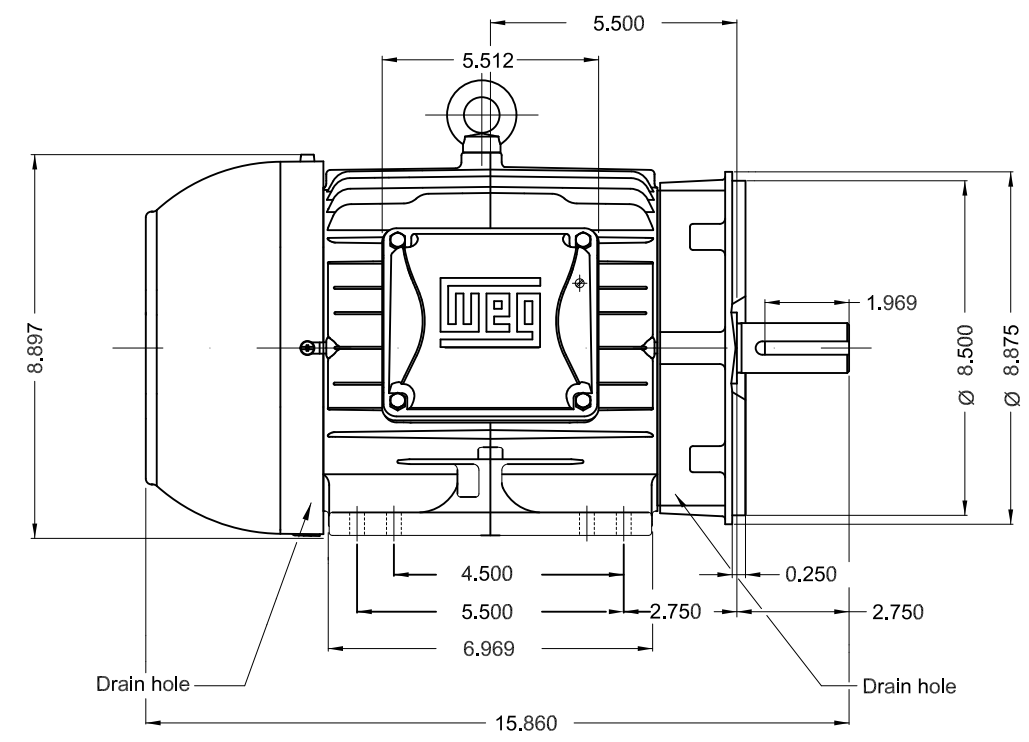
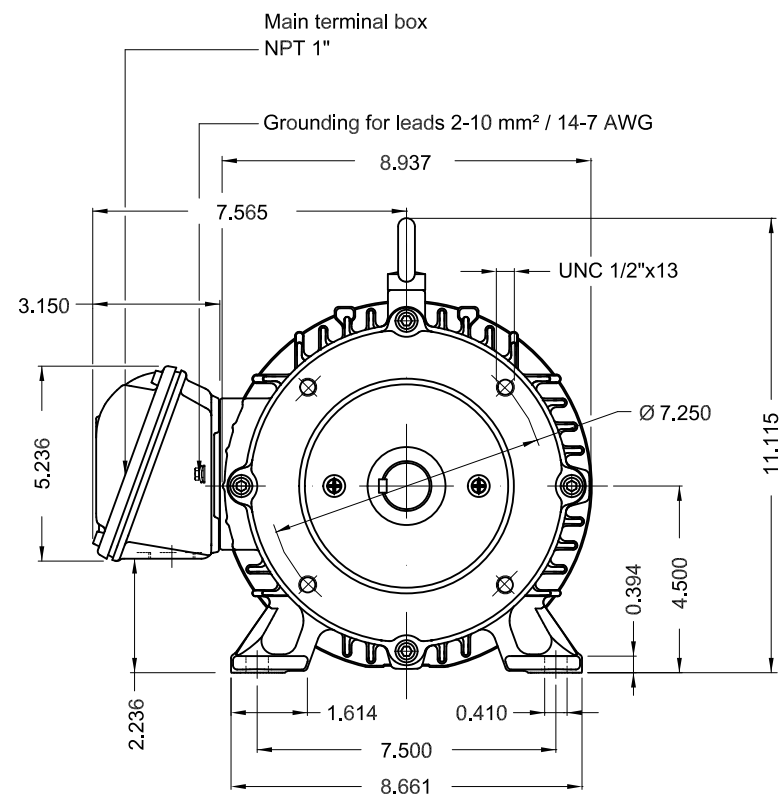
Notes:		
Performed by:		
Checked:		
Customer: Diverse Energy Systems, LLC		
W22 NEMA Premium - Ball Bearings		
Three-phase induction motor Frame 182/4T - IP55	09-DEC-2015	

1 2 3 4 5 6

A

B

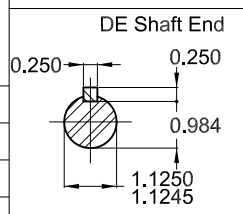
C



D

E

Bearing cap
Color RAL 5009
Painting plan 207A
Mounting B34R(D)



3 HP 04 Poles 60Hz A

ECM	LOC	SUMMARY OF MODIFICATIONS	EXECUTED	CHECKED	RELEASED	DATE	VER
EXECUTED	USERADMIN	THREE PHASE W22 MOTOR - NEMA PREMIUM EFF					
CHECKED		FRAME 182/4TC IP55 TEFC					
RELEASED							
REL DT	WMO	Jaragua do Sul	Product Engineering				

PREVIEW
WDD



SHEET 1 / 1

Dimensions in inches XME A3

**W22**

CC029A

® Inverter Duty Motor
Severe Duty

12445724

MADE IN MEXICO MODEL 00318ET3E182TC-W22

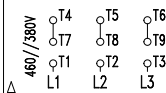
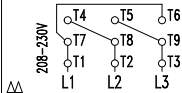
PH 3 | FR 182/4TC | HP(kw) 3.0(2.2) | Hz 60 | SF 1.25 | PF 0.79

V 230/460 | A 7.82/3.91 | RPM 1760 | INS. CL. F ΔT 80 K | IP55

NEMA NOM EFF 89.5 % | DES B | DUTY CONT. | AMB 40°C

ENCL TEFC | SFA 9.78/4.89 | USABLE @208V 8.65 A | SF 1.15 SFA 9.95

2.2kW 50Hz 380V 4.60A 1445RPM SF1.25 EFF 87.5% (IE3) | CODE K



MOBIL POLYREX EM

ALT 1000 m.a.s.l. | 93 Lbs

For 60Hz: Class I, Div 2, Gr. A, B, C and D - T3

Class I, Zone 2, IIC - T3

Class II, Div 2, Gr. F and G - T5

For use on PWM, Gr. A, B, C, D, F and G

VT1000:1, CT20:1, 1.0SF, T4A

FOR SAFE AREA
MOD.TE1BFOXON