

MODELS: GP-41440-G00-D, GP-41440-G10-D, GP-41440-N00-D, GP-41440-N10-D,  
 GP-41440-K00-D, GP-41440-K10-D, GB-41440-K00-D, GB-41440-K10-D,  
 GB-41440-N00-D, GB-41440-N10-D, GB-41440-R00-D, GB-41440-R10-D

NOTES:

1. COUPLING GUARD NOT SHOWN IN TOP VIEW.
2. ALL DIMENSIONS ARE FOR REFERENCE ONLY.

|         |          |            |
|---------|----------|------------|
| STATE   | Released | 08/03/2020 |
| DRAWN   | DLende   | 12/1/2017  |
| CHECKED | GDJ      | 08/03/2020 |

DIMENSIONS ARE IN INCHES  
 PROJECT: E251  
 WAS:



VIKING PUMP, INC.  
 A Unit of IDEX Corporation  
 Cedar Falls, IA 50613  
 U.S.A.

THIS DRAWING IS THE PROPERTY OF VIKING PUMP, INC. AND IS PROPRIETARY IN GENERAL AND DETAIL. IT SHALL NOT BE COPIED OR ITS CONTENTS REVEALED TO OUTSIDE PARTIES WITHOUT THE WRITTEN CONSENT OF VIKING PUMP, INC.

3D

DWG. NO. GPV-1440-030-U  
 SHEET 1 OF 1

REV. E.0  
 08/03/2020



No.:

Date: 04-NOV-2015

Customer :

TECHNICAL PROPOSAL

Three-phase induction motor - Squirrel cage rotor

Product line : W22 NEMA Premium - Ball Bearings

Catalog Number : 02018ET3E256T-W22

List Price : \$ Contact Us!

Notes:

Performed by:

Checked:



No.:

Date: 04-NOV-2015

## DATA SHEET

### Three-phase induction motor - Squirrel cage rotor

Customer :  
Product line : W22 NEMA Premium - Ball Bearings

Frame : 254/6T  
Output : 20 HP  
Frequency : 60 Hz  
Poles : 4  
Full load speed : 1765  
Slip : 1.94 %  
Voltage : 208-230/460 V  
Rated current : 53.3-48.2/24.1 A  
Locked rotor current : 313/157 A  
Locked rotor current (I<sub>L</sub>/I<sub>n</sub>) : 6.5  
No-load current : 20.0/10.0 A  
Full load torque : 58.7 lb.ft  
Locked rotor torque : 230 %  
Breakdown torque : 270 %  
Design : B  
Insulation class : F  
Temperature rise : 80 K  
Locked rotor time : 15 s (hot)  
Service factor : 1.25  
Duty cycle : S1  
Ambient temperature : -20°C - +40°C  
Altitude : 1000  
Degree of Protection : IP55  
Approximate weight : 291 lb  
Moment of inertia : 3.0963 sq.ft.lb  
Noise level : 64 dB(A)

|                     | D.E.    | N.D.E.  | Load | Power factor | Efficiency (%) |
|---------------------|---------|---------|------|--------------|----------------|
| Bearings            | 6309 C3 | 6209 C3 | 100% | 0.84         | 93.0           |
| Regreasing interval | 20000 h | 20000 h | 75%  | 0.79         | 92.4           |
| Grease amount       | 13 g    | 9 g     | 50%  | 0.68         | 91.7           |

Notes:

Performed by

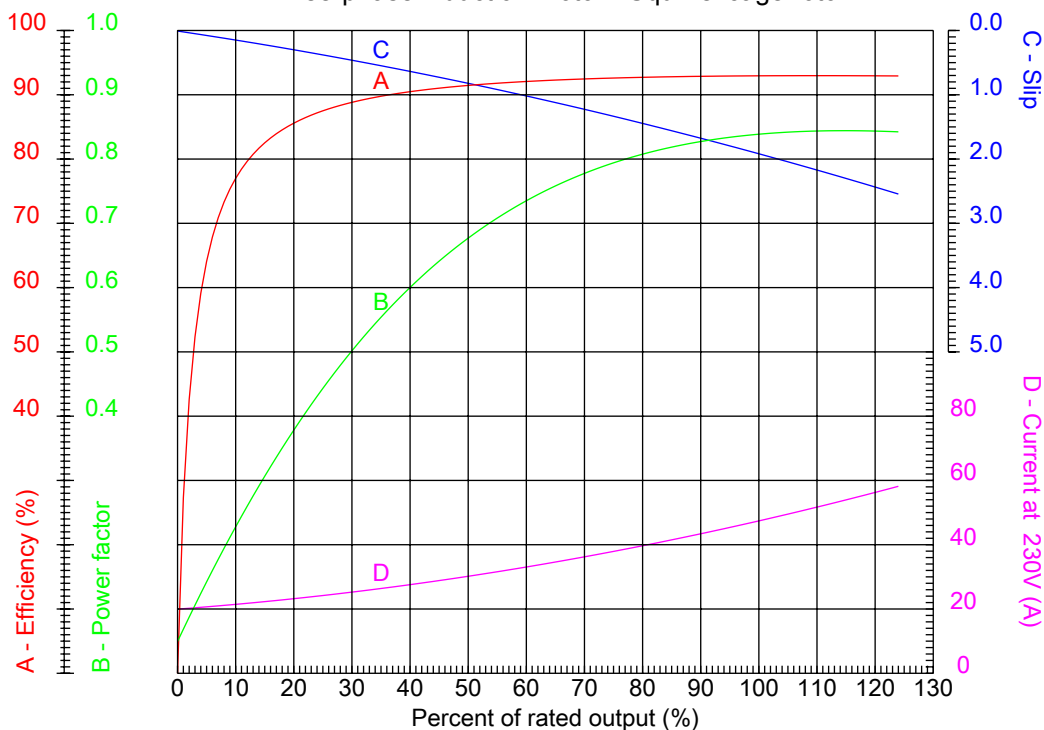
Checked



No.:

Date: 04-NOV-2015

PERFORMANCE CURVES RELATED TO RATED OUTPUT  
Three-phase induction motor - Squirrel cage rotor



Customer :  
Product line : W22 NEMA Premium - Ball Bearings

|                  |                    |  |         |
|------------------|--------------------|--|---------|
| Frame            | : 254/6T           | Locked rotor current (I <sub>l</sub> /I <sub>n</sub> ) | : 6.5   |
| Output           | : 20 HP            | Duty cycle   | : S1    |
| Frequency        | : 60 Hz            | Service factor   | : 1.25  |
| Full load speed  | : 1765             | Design   | : B     |
| Voltage          | : 208-230/460 V    | Locked rotor torque                                    | : 230 % |
| Rated current    | : 53.3-48.2/24.1 A | Breakdown torque                                       | : 270 % |
| Insulation class | : F                |  |         |

Notes:

Performed by

Checked

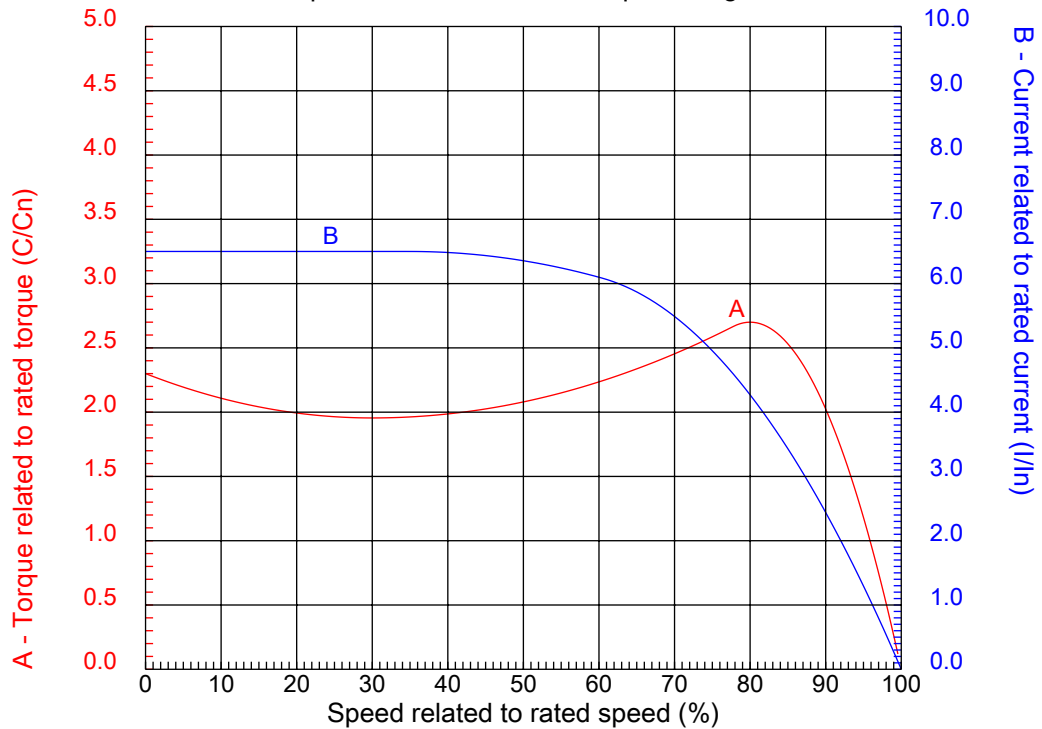


No.:

Date: 04-NOV-2015

### CHARACTERISTIC CURVES RELATED TO SPEED

Three-phase induction motor - Squirrel cage rotor



Customer :  
Product line : W22 NEMA Premium - Ball Bearings

|                  |                    |  |         |
|------------------|--------------------|--|---------|
| Frame            | : 254/6T           | Locked rotor current (I <sub>l</sub> /I <sub>n</sub> ) | : 6.5   |
| Output           | : 20 HP            | Duty cycle   | : S1    |
| Frequency        | : 60 Hz            | Service factor   | : 1.25  |
| Full load speed  | : 1765             | Design   | : B     |
| Voltage          | : 208-230/460 V    | Locked rotor torque                                    | : 230 % |
| Rated current    | : 53.3-48.2/24.1 A | Breakdown torque                                       | : 270 % |
| Insulation class | : F                |  |         |

Notes:

Performed by

Checked

1 2 3 4 5 6 7 8

A

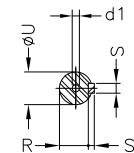
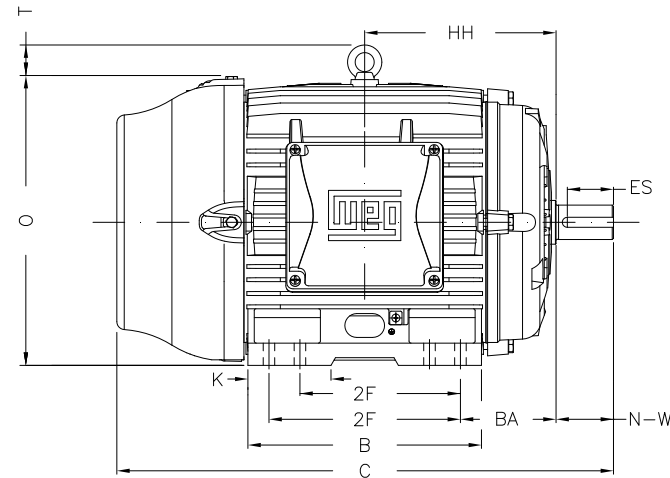
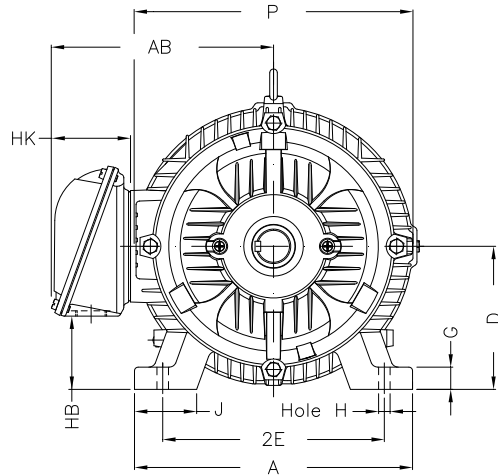
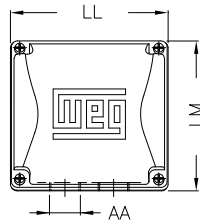
B

C

D

E

F



Notes:

Performed by:

Checked:

Customer:

W22 NEMA Premium - Ball Bearings

Three-phase induction motor

Frame 254/6T - IP55

04-NOV-2015



|                    |              |             |                  |              |
|--------------------|--------------|-------------|------------------|--------------|
| 2E<br>10.000       | J<br>2.539   | A<br>12.126 | P<br>12.953      | AB<br>10.483 |
| 2F<br>8.252/10.000 | K<br>2.559   | B<br>11.732 | BA<br>4.250      | FBA<br>6.852 |
| U<br>1.625         | N-W<br>4.000 | ES<br>2.756 | S<br>0.375       | R<br>1.416   |
| depth<br>0.375     | D<br>6.250   | G<br>0.827  | HB<br>3.061      | O<br>12.598  |
| T<br>2.087         | HF<br>6.565  | HH<br>9.250 | HK<br>3.976      | H<br>0.531   |
| C<br>24.945        | LL<br>7.815  | LM<br>7.480 | AA<br>NPT 1 1/2" | d1<br>A 4    |

1 2 3 4 5 6 7 8

A

LOW VOLTAGE

HIGH VOLTAGE

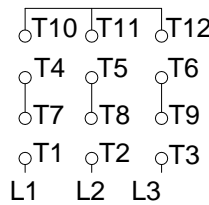
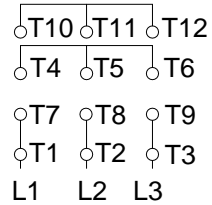


B

CONNECTIONS FOR STARTING ONLY:

LOW VOLTAGE

HIGH VOLTAGE



C

D

E

F

Notes:

Performed by:

Checked:

Customer:

W22 NEMA Premium - Ball Bearings

Three-phase induction motor  
Frame 254/6T - IP55

04-NOV-2015

