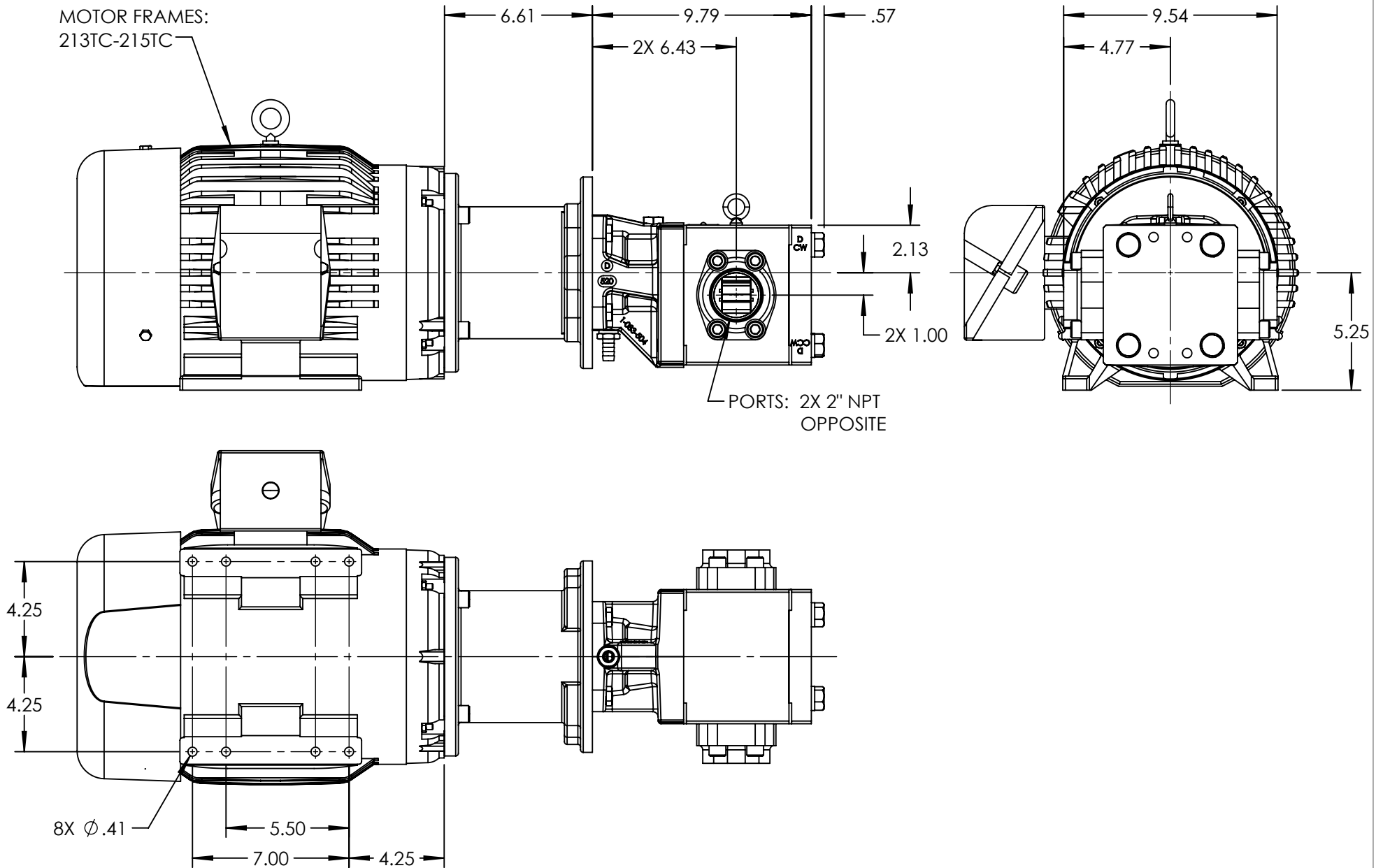


MOTOR FRAMES:  
213TC-215TC



NOTES:

1. ALL DIMENSIONS ARE FOR REFERENCE ONLY.

STANDARD MODELS: GB-41013-G00-M, GB-41013-G10-M

STATE	Released	03/03/2022
DRAWN	bmanternach	3/3/2022
CHECKED	BAM	03/03/2022

DIMENSIONS ARE IN INCHES	
PROJECT:	
WAS:	



VIKING PUMP, INC.  
A Unit of IDEX Corporation  
Cedar Falls, IA 50613  
U.S.A.

THIS DRAWING IS THE PROPERTY OF VIKING PUMP, INC. AND IS PROPRIETARY IN GENERAL AND DETAIL. IT SHALL NOT BE COPIED OR ITS CONTENTS REVEALED TO OUTSIDE PARTIES WITHOUT THE WRITTEN CONSENT OF VIKING PUMP, INC.

3D

DWG. NO.	SHEET 1 OF 1
GPV-1013-044-U	

REV. A.0
03/03/2022



# TORQUE AND CURRENT VS SPEED CURVE

Three Phase Induction Motor - Squirrel Cage



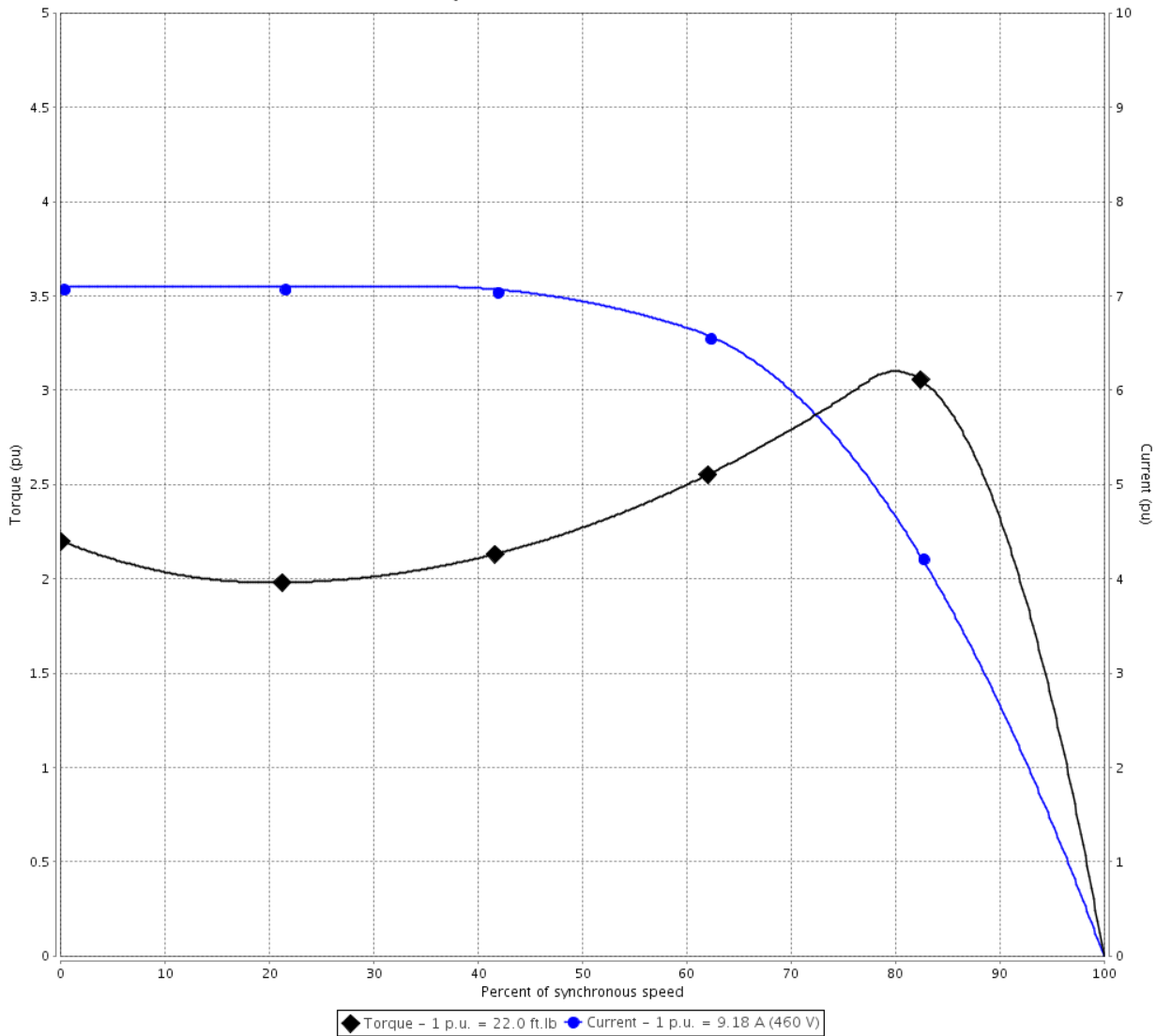
Customer :

Product line : W22 NEMA Premium Efficiency  
Three-Phase

Product code : 12445969

Catalog # : 00718ET3E213TC-W22

TORQUE AND CURRENT VS SPEED CURVE



Performance : 208-230/460 V 60 Hz 4P

Rated current	: 19.9-18.4/9.18 A	Moment of inertia (J)	: 1.34 sq.ft.lb
LRC	: 7.1	Duty cycle	: Cont.(S1)
Rated torque	: 22.0 ft.lb	Insulation class	: F
Locked rotor torque	: 220 %	Service factor	: 1.25
Breakdown torque	: 310 %	Temperature rise	: 80 K
Rated speed	: 1765 rpm	Design	: B

Locked rotor time : 36s (cold) 20s (hot)

Rev.	Changes Summary	Performed	Checked	Date
Performed by			Page 2 / 6	Revision
Checked by				
Date	06/11/2019			

# LOAD PERFORMANCE CURVE

## Three Phase Induction Motor - Squirrel Cage

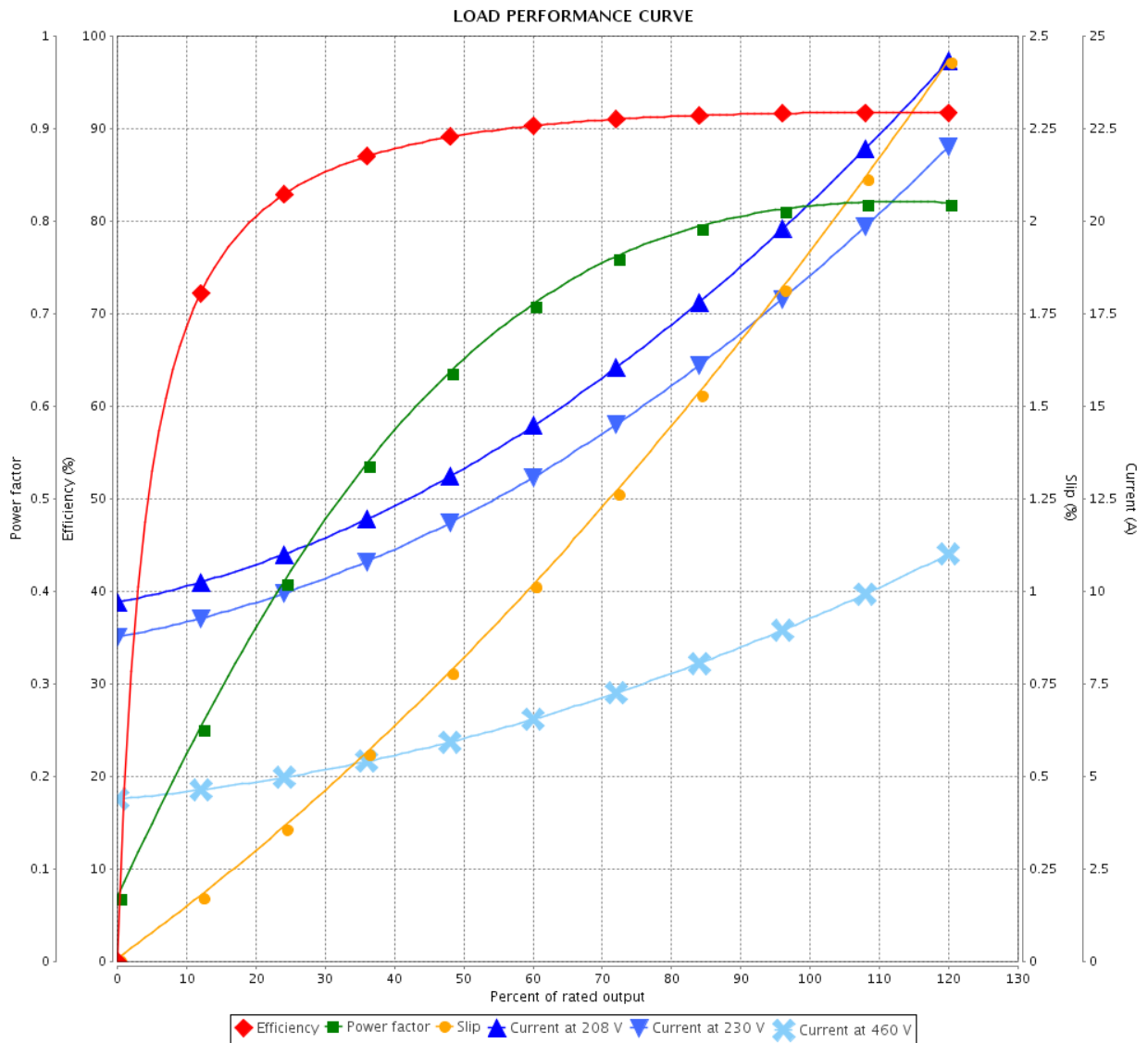


Customer :

Product line : W22 NEMA Premium Efficiency Three-Phase

Product code : 12445969

Catalog # : 00718ET3E213TC-W22



Performance : 208-230/460 V 60 Hz 4P

Rated current : 19.9-18.4/9.18 A  
 LRC : 7.1  
 Rated torque : 22.0 ft.lb  
 Locked rotor torque : 220 %  
 Breakdown torque : 310 %  
 Rated speed : 1765 rpm

Moment of inertia (J) : 1.34 sq.ft.lb  
 Duty cycle : Cont.(S1)  
 Insulation class : F  
 Service factor : 1.25  
 Temperature rise : 80 K  
 Design : B

Rev.	Changes Summary	Performed	Checked	Date
Performed by			Page	Revision
Checked by				
Date				

# THERMAL LIMIT CURVE



## Three Phase Induction Motor - Squirrel Cage

Customer :

Product line : W22 NEMA Premium Efficiency  
Three-Phase

Product code : 12445969

Catalog # : 00718ET3E213TC-W22

Performance : 208-230/460 V 60 Hz 4P

Rated current : 19.9-18.4/9.18 A  
LRC : 7.1  
Rated torque : 22.0 ft.lb  
Locked rotor torque : 220 %  
Breakdown torque : 310 %  
Rated speed : 1765 rpm

Moment of inertia (J) : 1.34 sq.ft.lb  
Duty cycle : Cont.(S1)  
Insulation class : F  
Service factor : 1.25  
Temperature rise : 80 K  
Design : B

Heating constant

Cooling constant

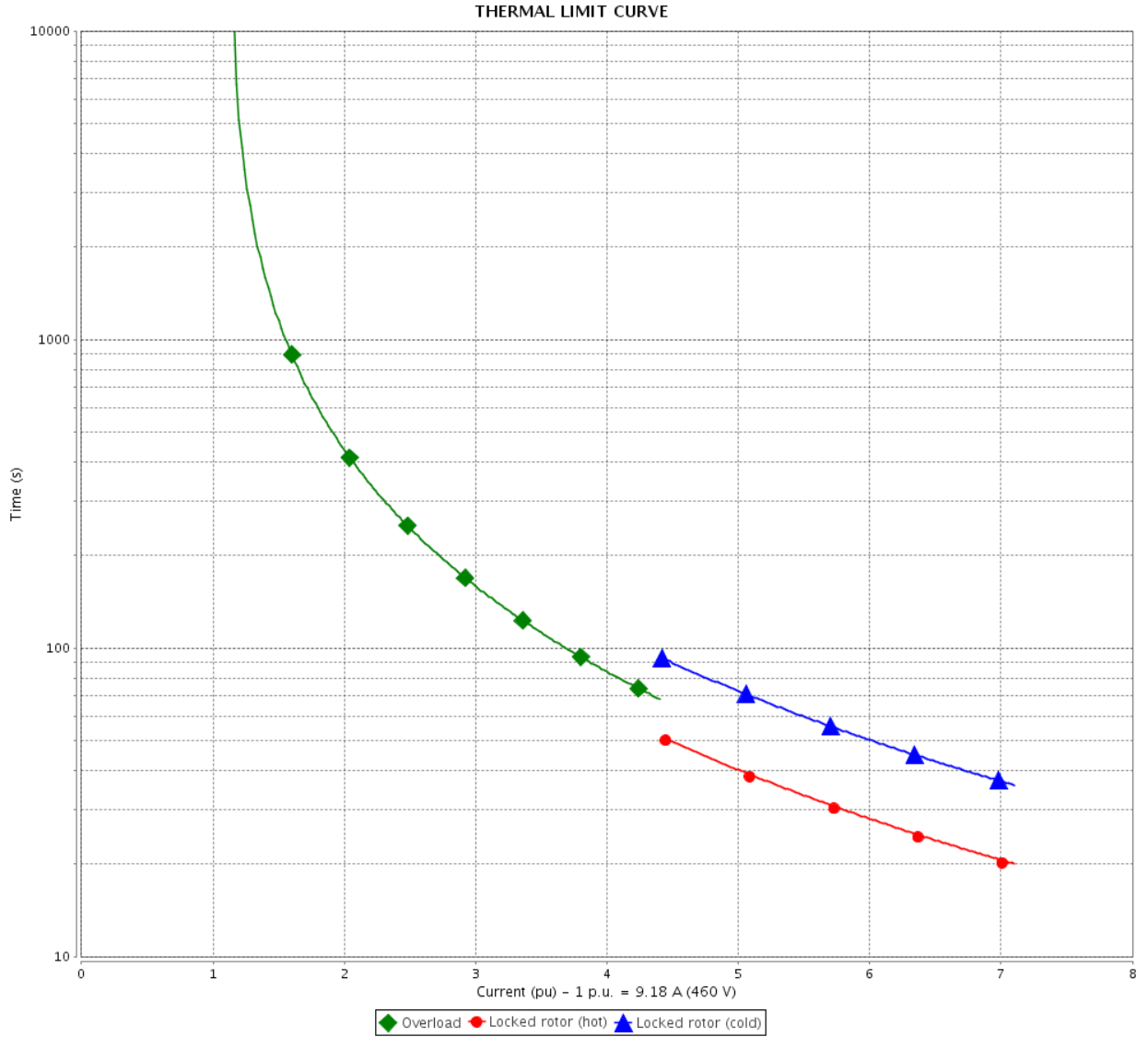
Rev.	Changes Summary	Performed	Checked	Date
Performed by			Page 4 / 6	Revision
Checked by				
Date	06/11/2019			

# THERMAL LIMIT CURVE

Three Phase Induction Motor - Squirrel Cage



Customer : \_\_\_\_\_



Rev.	Changes Summary	Performed	Checked	Date
Performed by		Page 5 / 6		Revision
Checked by				
Date				

# VFD OPERATION CURVE

Three Phase Induction Motor - Squirrel Cage

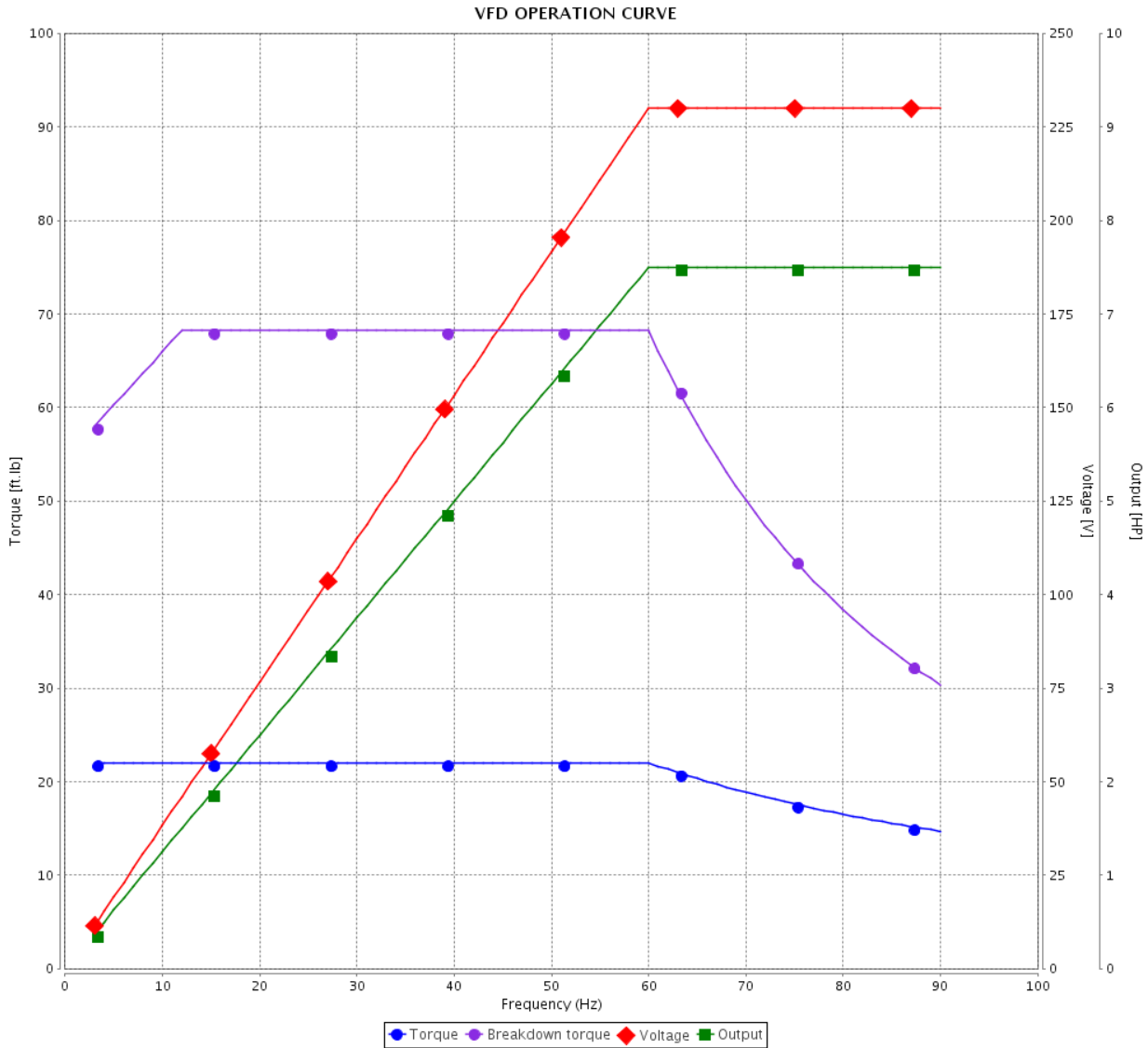


Customer :

Product line : W22 NEMA Premium Efficiency Three-Phase

Product code : 12445969

Catalog # : 00718ET3E213TC-W22



Performance : 208-230/460 V 60 Hz 4P

Rated current : 19.9-18.4/9.18 A  
 LRC : 7.1  
 Rated torque : 22.0 ft.lb  
 Locked rotor torque : 220 %  
 Breakdown torque : 310 %  
 Rated speed : 1765 rpm

Moment of inertia (J) : 1.34 sq.ft.lb  
 Duty cycle : Cont.(S1)  
 Insulation class : F  
 Service factor : 1.25  
 Temperature rise : 80 K  
 Design : B

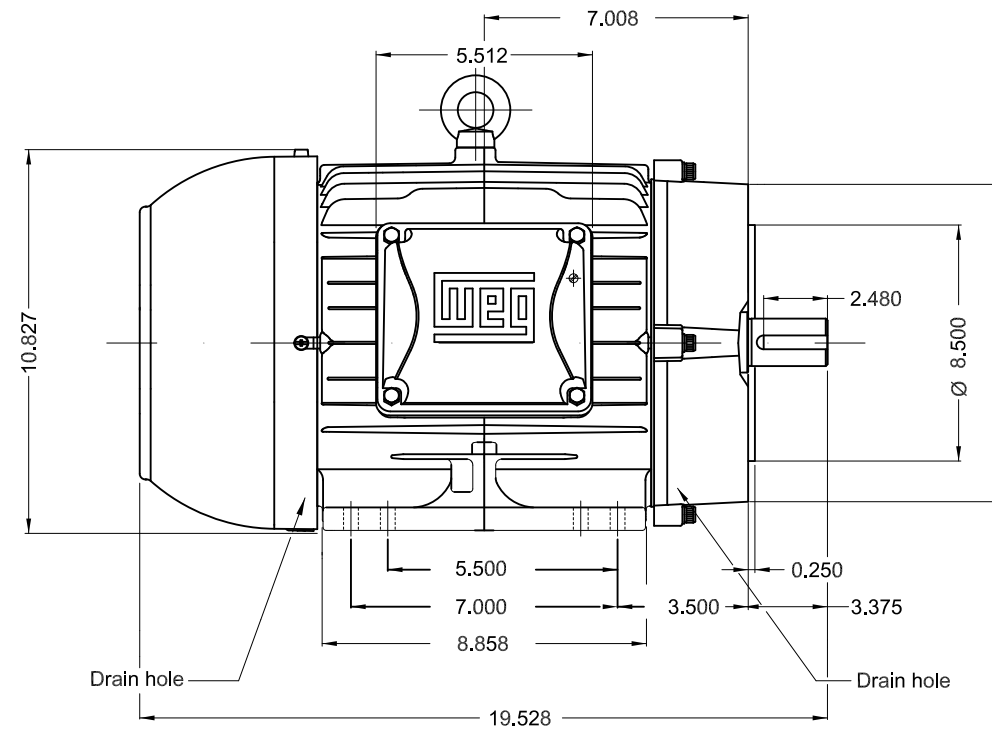
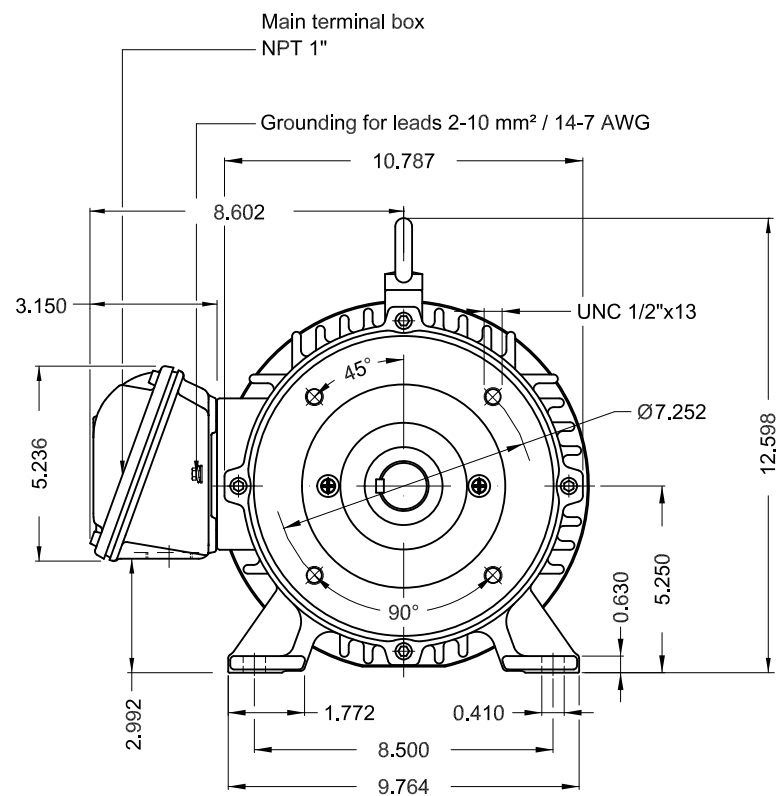
Rev.	Changes Summary	Performed	Checked	Date
Performed by			Page 6 / 6	Revision
Checked by				
Date	06/11/2019			

1 2 3 4 5 6

A

B

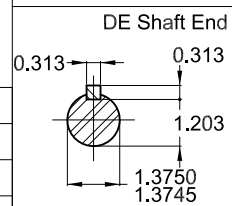
C



D

E

Bearing cap  
Color RAL 5009  
Painting plan 207A  
Mounting B34R(D)



7.5 HP 04 Poles 60Hz A

ECM	LOC	SUMMARY OF MODIFICATIONS	EXECUTED	CHECKED	RELEASED	DATE	VER
EXECUTED	PIRWBUSER	THREE PHASE W22 MOTOR - NEMA PREMIUM EFF					
CHECKED		FRAME 213/5TC IP55 TEFC					
RELEASED							
REL DT.	WMO	Jaragua do Sul	Product Engineering				

PREVIEW  
WDD



SHEET 1 / 1

Dimensions in inches XME A3



**W22**

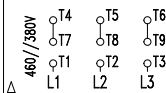
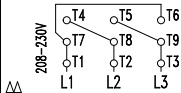
CC029A

® Inverter Duty Motor  
Severe Duty

12445969

MADE IN MEXICO MODEL 00718ET3E213TC-W22

PH 3	FR 213/5TC	HP(kW) 7.5(5.5)	Hz 60	SF 1.25	PF 0.82
V 230/460	A 18.4/9.18	RPM 1765	INS. CL. F	ΔT 80 K	IP55
NEMA NOM EFF 91.7 %			DES B DUTY CONT.		AMB 40°C
ENCL TEFC	SFA 23.0/11.5	USABLE @208V 19.9 A	SF 1.15	SFA 22.9	
7.5HP 5.5kW 50Hz 380V 11.0A 1455RPM SF1.25 EFF 89.6% (IE3)					CODE H



MOBIL POLYREX EM

ALT 1000 m.a.s.l. | 168 Lbs

For 60Hz: Class I, Div 2, Gr. A, B, C and D - T3  
 Class I, Zone 2, IIC - T3  
 Class II, Div 2, Gr. F and G - T4  
 For use on PWM, Gr. A, B, C, D and F  
 VT 1000:1, CT 20:1, 1.0SF, T3A

FOR SAFE AREA  
MOD.TE1BFOXON