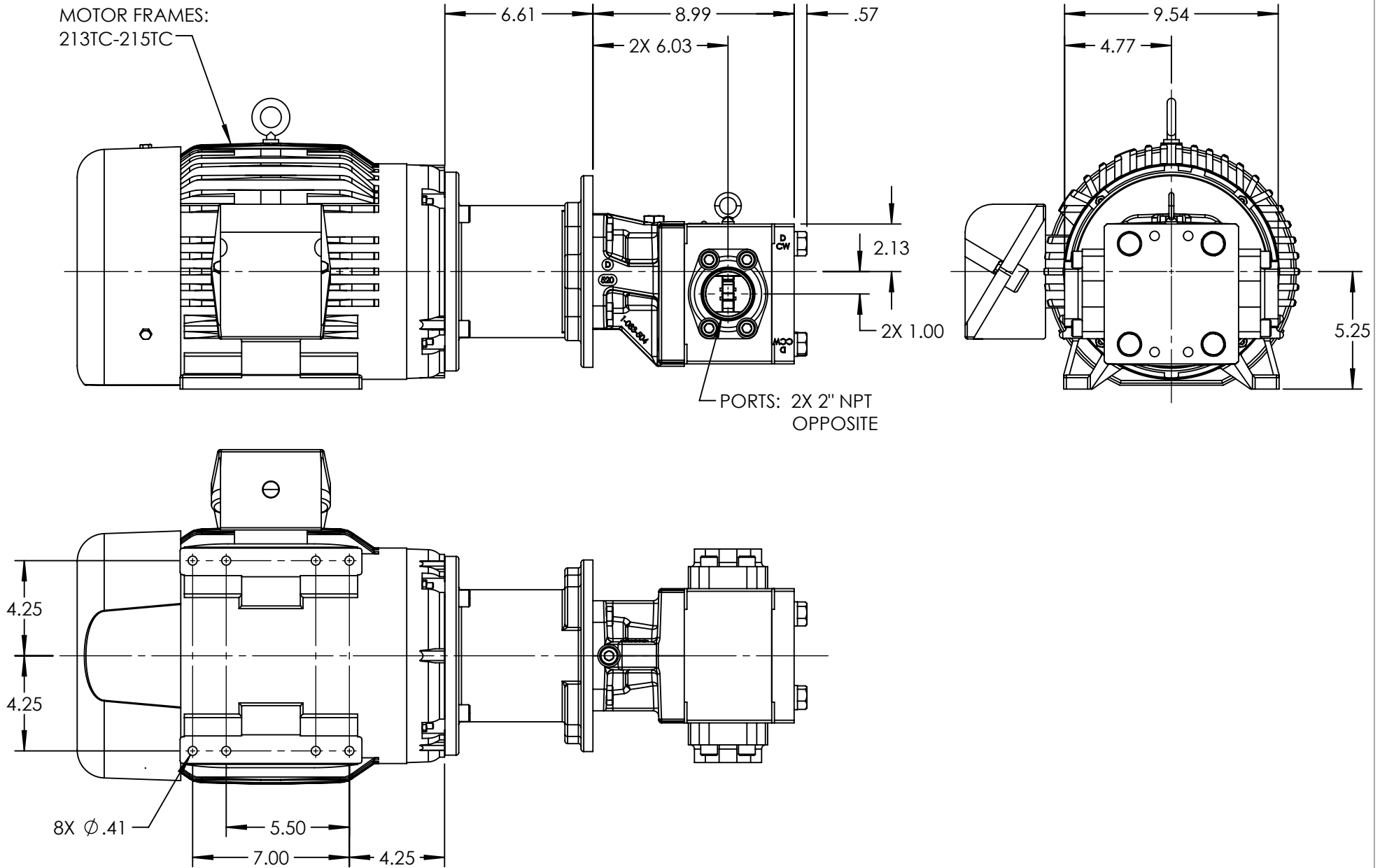


MOTOR FRAMES:
213TC-215TC



PORTS: 2X 2" NPT
OPPOSITE

NOTES:

1. ALL DIMENSIONS ARE FOR REFERENCE ONLY.

STANDARD MODELS: GB-41005-G00-M, GB-41005-G10-M

STATE	Released	07/16/2021
DRAWN	bmanternach	6/21/2021
CHECKED	JAG	07/16/2021

DIMENSIONS ARE IN INCHES
PROJECT: E331
WAS:



VIKING PUMP, INC.
A Unit of IDEX Corporation
Cedar Falls, IA 50613
U.S.A.

THIS DRAWING IS THE PROPERTY OF
VIKING PUMP, INC. AND IS PROPRIETARY
IN GENERAL AND DETAIL. IT SHALL NOT BE
COPIED OR ITS CONTENTS REVEALED TO
OUTSIDE PARTIES WITHOUT THE WRITTEN
CONSENT OF VIKING PUMP, INC.

3D

DWG. NO. SHEET 1 OF 1
GPV-1005-003-U

REV. A.0
07/16/2021



No.:

Date: 04-DEC-2015

Customer :

TECHNICAL PROPOSAL

Three-phase induction motor - Squirrel cage rotor

Product line : W22 NEMA Premium - Ball Bearings

Catalog Number : 01018ET3E215T-W22

List Price : \$ Contact Us!

Notes:

Performed by:

Checked:



No.:

Date: 04-DEC-2015

DATA SHEET

Three-phase induction motor - Squirrel cage rotor

Customer :
Product line : W22 NEMA Premium - Ball Bearings

Frame : 213/5T
Output : 10 HP
Frequency : 60 Hz
Poles : 4
Full load speed : 1765
Slip : 1.94 %
Voltage : 208-230/460 V
Rated current : 27.4-24.8/12.4 A
Locked rotor current : 159/79.4 A
Locked rotor current (I_L/I_n) : 6.4
No-load current : 11.3/5.65 A
Full load torque : 29.4 lb.ft
Locked rotor torque : 200 %
Breakdown torque : 300 %
Design : B
Insulation class : F
Temperature rise : 80 K
Locked rotor time : 17 s (hot)
Service factor : 1.25
Duty cycle : S1
Ambient temperature : -20°C - +40°C
Altitude : 1000
Degree of Protection : IP55
Approximate weight : 172 lb
Moment of inertia : 1.5104 sq.ft.lb
Noise level : 58 dB(A)

	D.E.	N.D.E.	Load	Power factor	Efficiency (%)
Bearings	6308 ZZ	6207 ZZ	100%	0.83	91.7
Regreasing interval	---	---	75%	0.77	91.7
Grease amount	---	---	50%	0.66	91.0

Notes:

Performed by

Checked

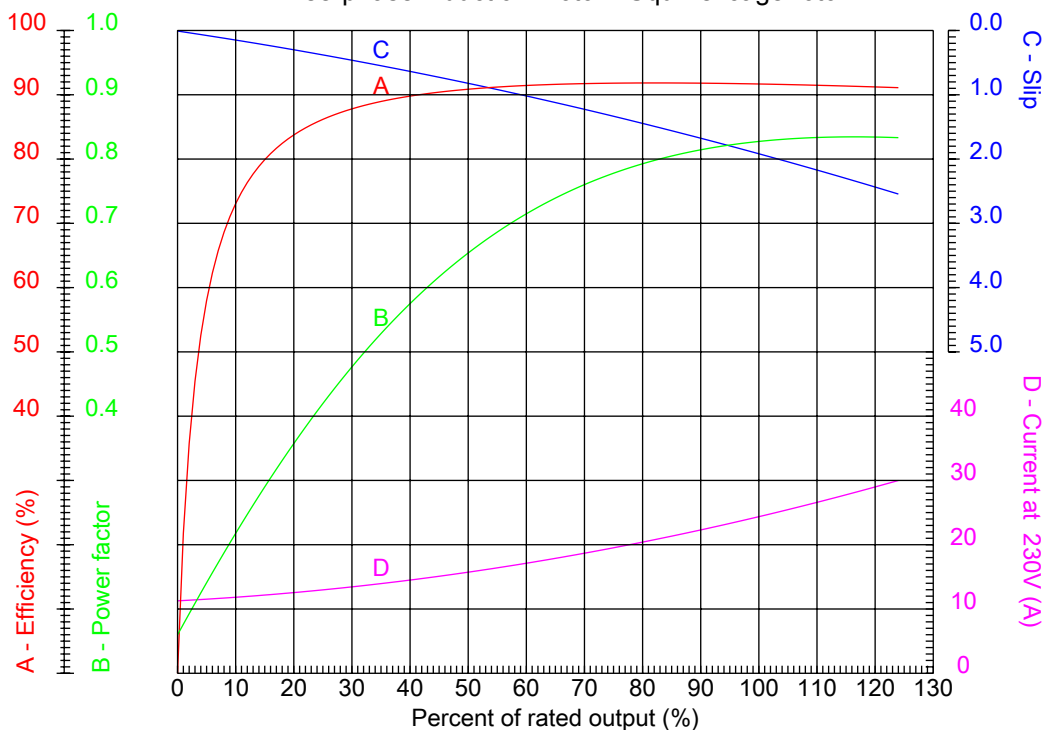


No.:

Date: 04-DEC-2015

PERFORMANCE CURVES RELATED TO RATED OUTPUT

Three-phase induction motor - Squirrel cage rotor



Customer :
Product line : W22 NEMA Premium - Ball Bearings

Frame	: 213/5T	Locked rotor current (I _l /I _n)	: 6.4
Output	: 10 HP	Duty cycle	: S1
Frequency	: 60 Hz	Service factor	: 1.25
Full load speed	: 1765	Design	: B
Voltage	: 208-230/460 V	Locked rotor torque	: 200 %
Rated current	: 27.4-24.8/12.4 A	Breakdown torque	: 300 %
Insulation class	: F		

Notes:

Performed by

Checked

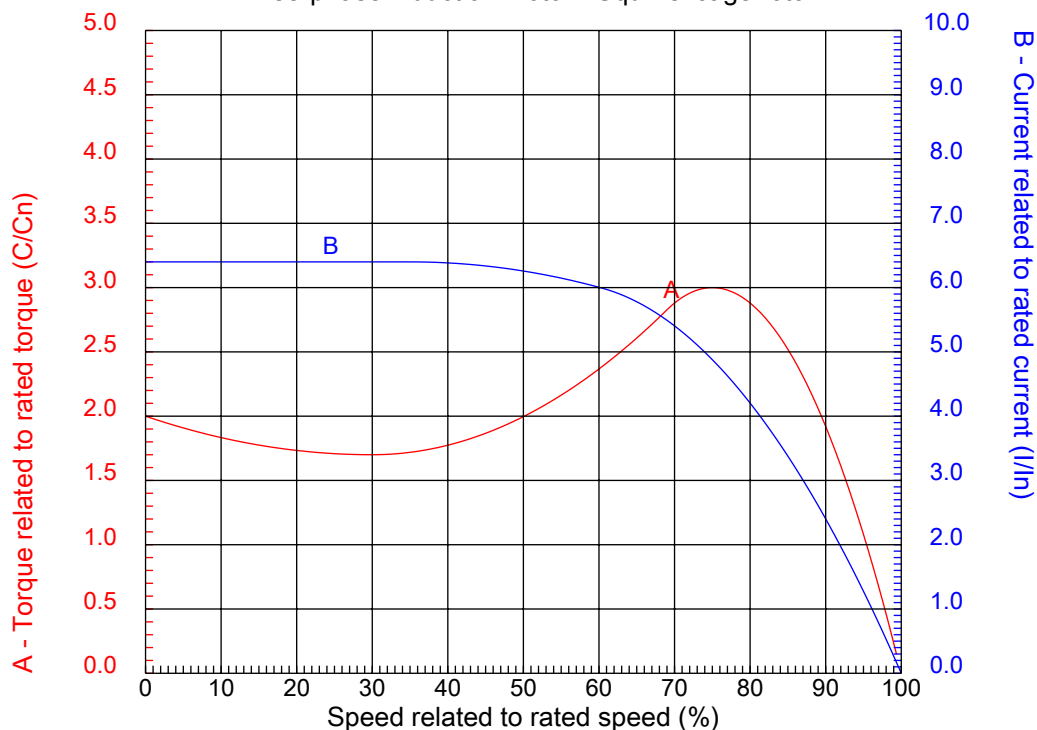


No.:

Date: 04-DEC-2015

CHARACTERISTIC CURVES RELATED TO SPEED

Three-phase induction motor - Squirrel cage rotor



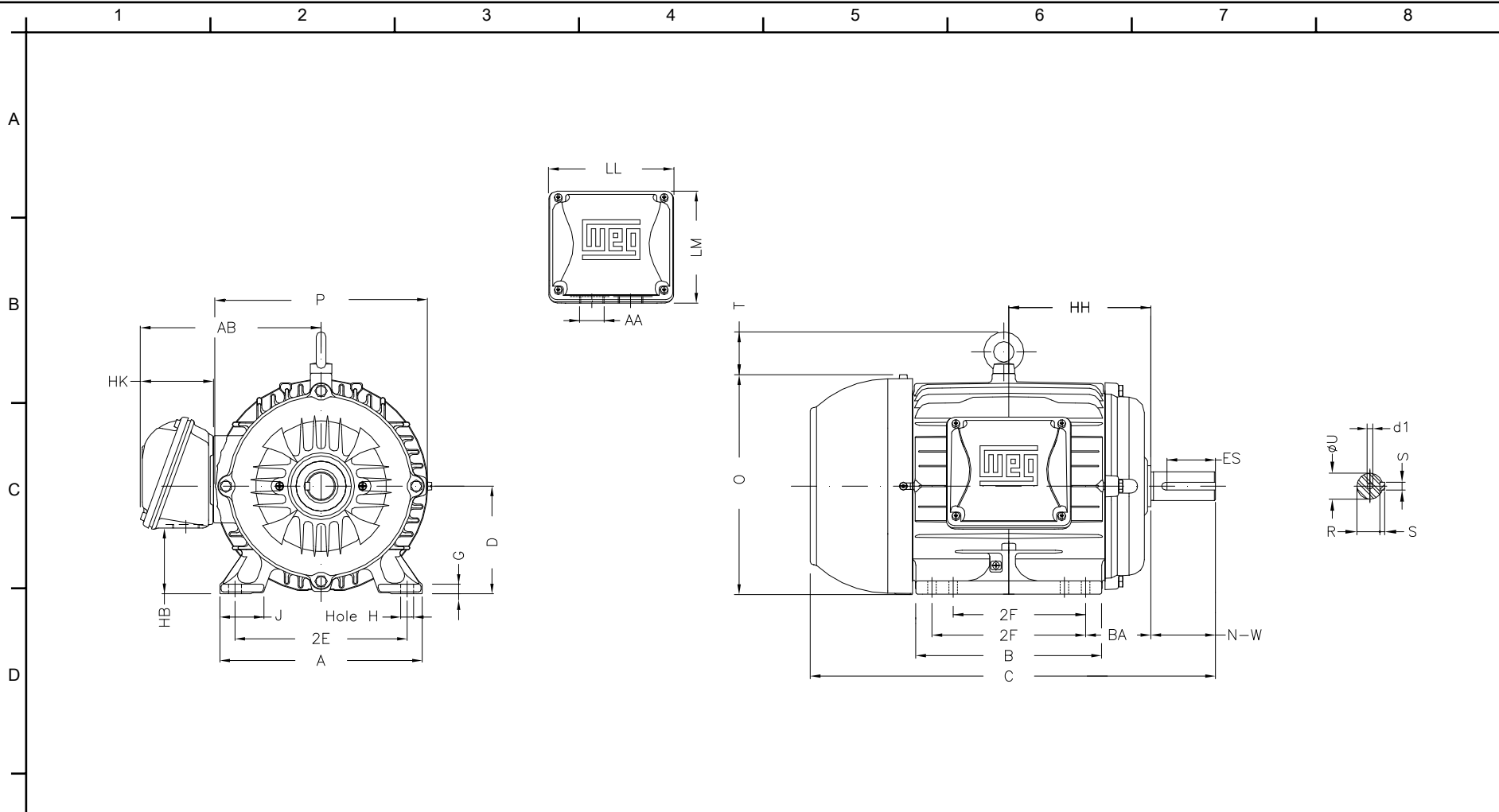
Customer :
Product line : W22 NEMA Premium - Ball Bearings

Frame	: 213/5T	Locked rotor current (I _l /I _n)	: 6.4
Output	: 10 HP	Duty cycle	: S1
Frequency	: 60 Hz	Service factor	: 1.25
Full load speed	: 1765	Design	: B
Voltage	: 208-230/460 V	Locked rotor torque	: 200 %
Rated current	: 27.4-24.8/12.4 A	Breakdown torque	: 300 %
Insulation class	: F		

Notes:

Performed by

Checked



Notes:

2E 8.500	J 1.772	A 9.764	P 10.669	AB 8.583
2F 5.500/7.000	K 2.165	B 8.858	BA 3.500	FBA 5.921
U 1.375	N-W 3.375	ES 2.480	S 0.313	R 1.203
depth 0.313	D 5.250	G 0.669	HB 2.985	O 10.841
T 1.772	HF 5.250	HH 7.000	HK 3.150	H 0.406
C 19.517	FC 22.546	LL 5.512	LM 5.236	AA NPT 1"
d1 A 4				

Performed by:


Checked:

Customer:

W22 NEMA Premium - Ball Bearings

Three-phase induction motor
Frame 213/5T - IP55

04-DEC-2015

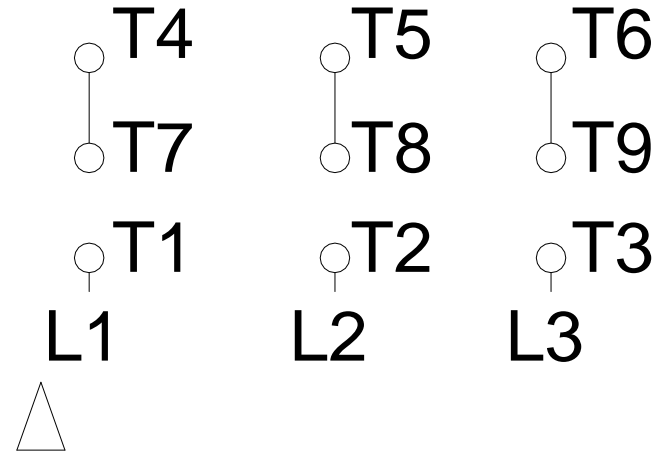
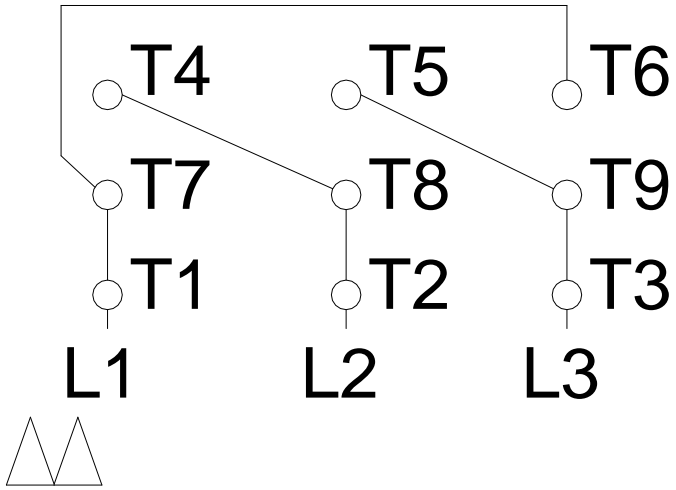


1 2 3 4 5 6 7 8

LOW VOLTAGE

HIGH VOLTAGE

A
B
C
D
E
F



Notes:

Performed by:

Checked:

Customer:

W22 NEMA Premium - Ball Bearings

Three-phase induction motor
Frame 213/5T - IP55

04-DEC-2015

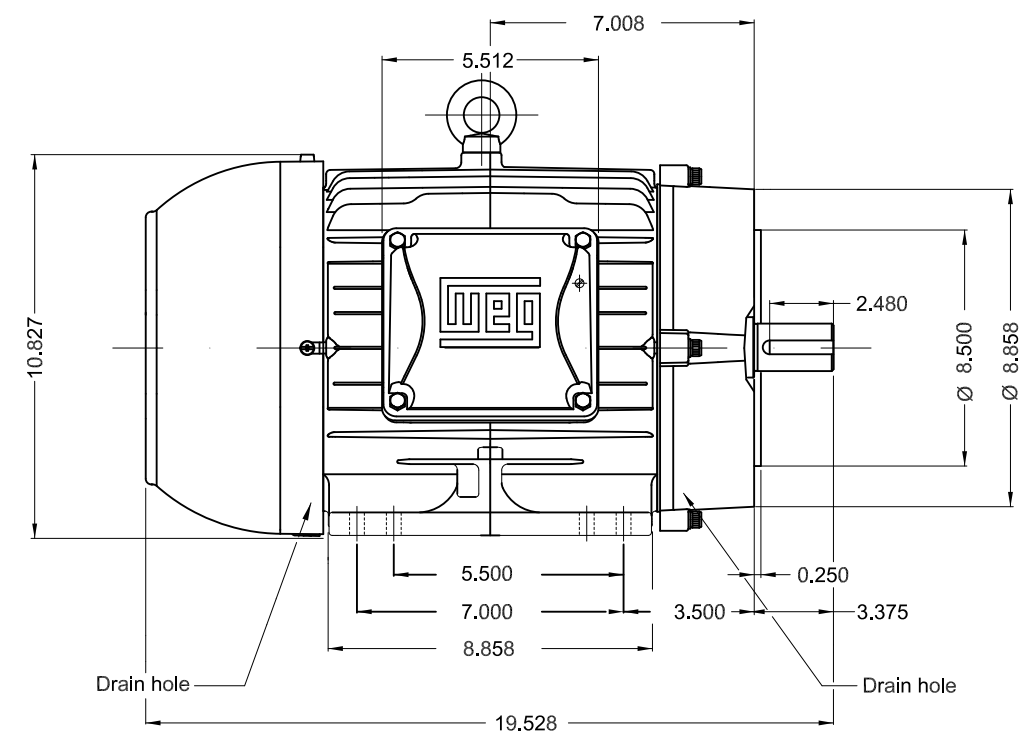
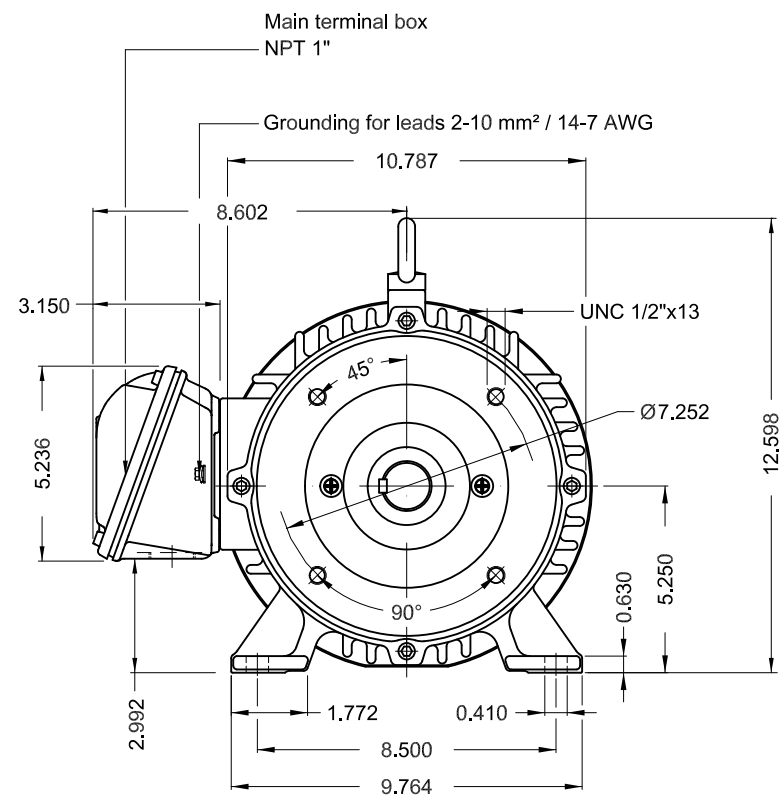


1 2 3 4 5 6

A

B

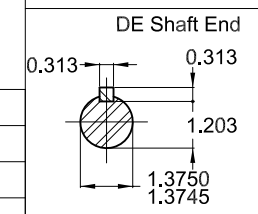
C



D

E

Bearing cap
Color RAL 5009
Painting plan 207A
Mounting B34R(D)



7.5 HP 04 Poles 60Hz A

ECM	LOC	SUMMARY OF MODIFICATIONS	EXECUTED	CHECKED	RELEASED	DATE	VER
EXECUTED	PIRWBUSER	THREE PHASE W22 MOTOR - NEMA PREMIUM EFF FRAME 213/5TC IP55 TEFC					
CHECKED							
RELEASED							
REL DT.	WMO		Jaragua do Sul	Product Engineering	SHEET	1 / 1	

PREVIEW
WDD



Dimensions in inches XME A3

**W22**

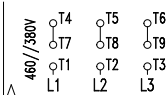
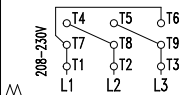
CC029A

® Inverter Duty Motor
Severe Duty

12445969

MADE IN MEXICO MODEL 00718ET3E213TC-W22

PH 3	FR 213/5TC	HP(kW) 7.5(5.5)	Hz 60	SF 1.25	PF 0.82
V 230/460	A 18.4/9.18	RPM 1765	INS. CL. F	ΔT 80 K	IP55
NEMA NOM EFF 91.7 %			DES B DUTY CONT.		AMB 40°C
ENCL TEFC	SFA 23.0/11.5	USABLE @208V 19.9 A	SF 1.15	SFA 22.9	
7.5HP 5.5kW 50Hz 380V 11.0A 1455RPM SF1.25 EFF 89.6% (IE3)					CODE H



→6308-ZZ
→6207-ZZ

MOBIL POLYREX EM

ALT 1000 m.a.s.l. | 168 Lbs

For 60Hz: Class I, Div 2, Gr. A, B, C and D - T3
 Class I, Zone 2, IIC - T3
 Class II, Div 2, Gr. F and G - T4
 For use on PWM, Gr. A, B, C, D and F
 VT 1000:1, CT 20:1, 1.0SF, T3A

FOR SAFE AREA
MOD.TE1BFOXON