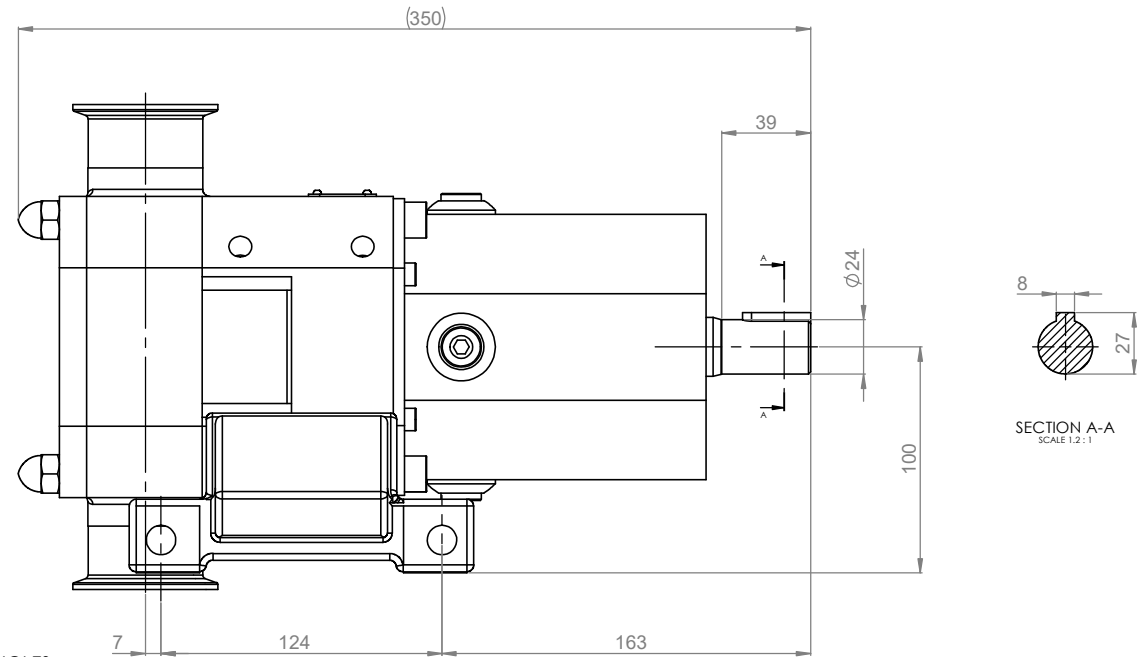
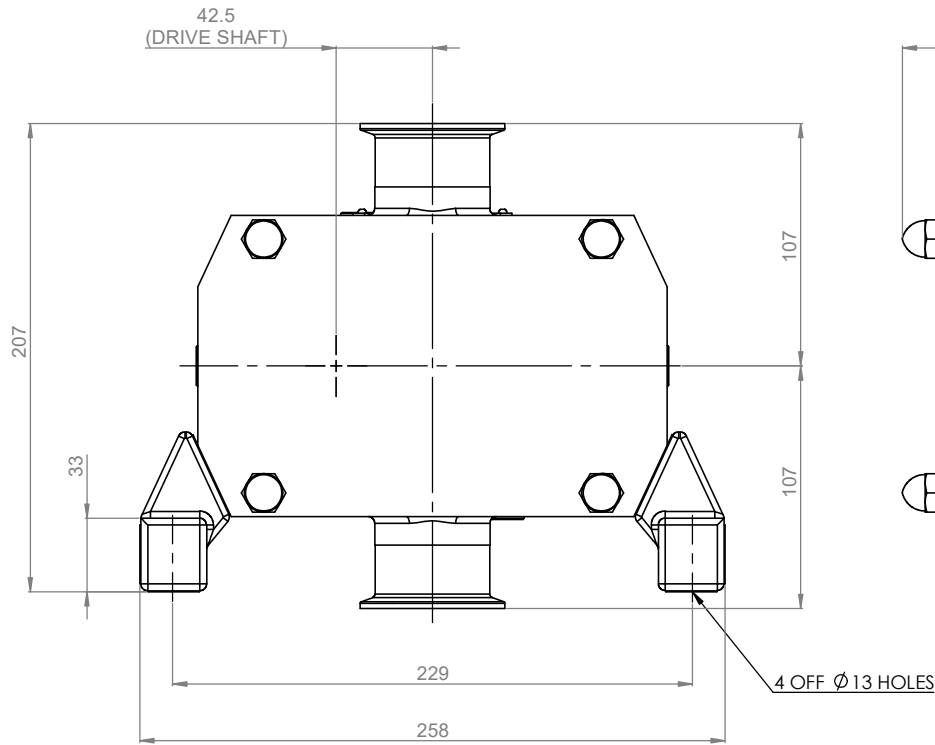
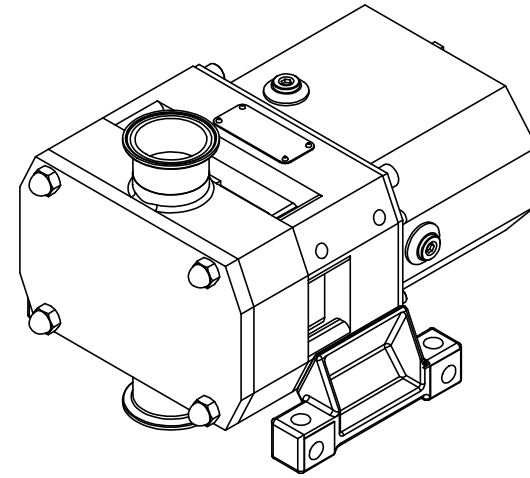


**GENERAL ARRANGEMENT DETAILS**

**PUMP INFORMATION**

PUMP MODEL	STERILOBE SLCL/0254/10
LEFT/TOP CONNECTION	2" TRI-CLAMP
RIGHT/BOTTOM CONNECTION	2" TRI-CLAMP
DRIVE SHAFT POSITION	LEFT HAND DRIVE
FRONT COVER ADDITIONS	STANDARD
ROTORCASE ADDITIONS	STANDARD
GEARBOX ADDITIONS	STANDARD
PUMP ADDITIONS	STANDARD

THIS IS NOT A CERTIFIED DRAWING. USE FOR GENERAL INSTALLATION ONLY



SECTION A-A  
 SCALE 1:2 : 1

UPDATED TO CURRENT STANDARD	B	29/04/2022
AMENDMENT	ISSUE	DATE

 HIGHFIELD INDUSTRIAL ESTATE, EAST SUSSEX, BN23 6PT TEL: (+44) 1323 508211	<b>COPYRIGHT:</b> THIS DRAWING IS THE SOLE PROPERTY OF <b>VIKING PUMP HYGIENIC LTD.</b> IT MUST NOT BE COPIED OR USED IN PART OR FULL, WITHOUT PRIOR WRITTEN CONSENT.	UNLESS OTHERWISE STATED: ALL DIMENSIONS ± 2.50 ANGLES ±2.0° DO NOT SCALE THIS DRAWING REMOVE BURRS AND SHARP EDGES DIMENSIONS IN MILLIMETRES <b>IF IN DOUBT ASK</b>	PROJECTION	DRAWN	CHECKED	TITLE
				IP/JB	DSB	GENERAL ARRANGEMENT <b>SLCL-TC-LEFT</b>