



OEM: HOT OIL MARKET

MODELS	Technology		External Gear				Gerotor	
	Model		SG-0510	SG-0514	SG-0519	SG-0528	GR-0955	GR-0996
APPLICATIONS	Oil Reclamation & Transfer		✓	✓	✓	✓		
	Oil Filter Carts		✓	✓	✓	✓		
	Open Vat Fryer		✓	✓	✓	✓	✓	✓
	Pressure Fryer		✓	✓	✓	✓	✓	✓
SPECIFICATIONS	GPM		4	5.5	8	11	5	8
	Ports	Size	1/2" or 3/4"	1/2" or 3/4"	1/2" or 3/4"	3/4"	1/2"	3/4"
		Type	NPT	NPT	NPT	NPT	NPT	NPT
Capabilities			<ul style="list-style-type: none"> High suction capacity (15" Hg vacuum) Single or bi-directional operation Hardened steel gears & shafts Integral relief valve (optional) Weep groove (optional) 				<ul style="list-style-type: none"> Solids handling (breaded chicken) Single directional operation Quiet operation Weep groove (optional) 	

VIKING PUMP® MOTOR

- 8-Bolt pattern on motor allows for a variety of pump orientations
- 1/3 HP, 1 Phase, dual rated 60/50 Hz with high and low voltage options
- Manual thermal overload protection
- Compact M4 drive for smallest footprint possible



THE VIKING PUMP® ADVANTAGE

PROVEN MARKET LEADER

Over 66,000 Viking pumps are installed in hot oil applications every year.

DEDICATED CUSTOMER SUPPORT

As a **partner**, your organization will have **dedicated** inside and outside sales support, 75% of inquiries receive a response within 2 hours.

VERTICALLY INTEGRATED SUPPLY CHAIN

Viking Pump has the most control of their supply chain and maintains a 3-week lead time.



UNPARALLELED RELIABILITY

Viking Pump has such confidence in our products that we carry a standard 18 month warranty, 50% longer than the competition.

THE RIGHT PRODUCTS FOR YOUR SYSTEMS

Viking offers a wide variety of products to equip your organization for success:



Internal gear



External Gear



Sliding Vane



Rotary Lobe*



Circumferential Piston*



Centrifugal*

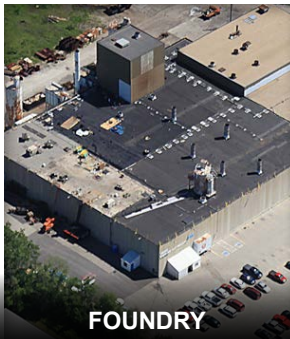
(* Hygienic)

VERTICALLY INTEGRATED PRODUCTION PROCESS

Viking Pump operates a foundry, a 250,000+ sq. ft. machining, assembly and testing center, and an extensive product engineering and testing lab in its world headquarters in Cedar Falls, Iowa, USA. This level of vertical integration ensures maximum quality, ability to satisfy special needs, and to meet project schedules.



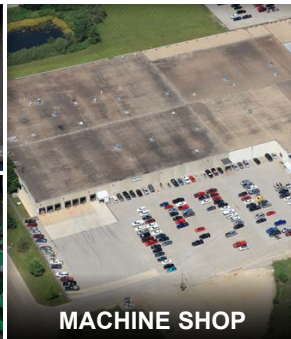
MELT & MOLD



FOUNDRY



MACHINING



MACHINE SHOP



TESTING



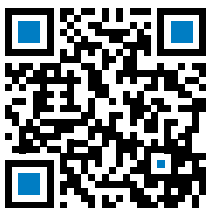
SHAKEOUT,
CHIP & GRIND



ASSEMBLY



WORLD HQ - USA



LET'S TALK

Contact Us Today & Make the Viking Pump® Advantage Yours!