

MODELS: GP-41420-G00-D, GP-41420-G10-D, GP-41420-N00-D, GP-41420-N10-D,
 GP-41420-K00-D, GP-41420-K10-D, GB-41420-K00-D, GB-41420-K10-D,
 GB-41420-N00-D, GB-41420-N10-D, GB-41420-R00-D, GB-41420-R10-D

NOTES:

1. COUPLING GUARD NOT SHOWN IN TOP VIEW.
2. ALL DIMENSIONS ARE FOR REFERENCE ONLY.

STATE	Released	08/03/2020
DRAWN	DLende	11/28/2017
CHECKED	GDJ	07/30/2020

DIMENSIONS ARE IN INCHES	
PROJECT:	E251
WAS:	



VIKING PUMP, INC.
 A Unit of IDEX Corporation
 Cedar Falls, IA 50613
 U.S.A.

THIS DRAWING IS THE PROPERTY OF VIKING PUMP, INC. AND IS PROPRIETARY IN GENERAL AND DETAIL. IT SHALL NOT BE COPIED OR ITS CONTENTS REVEALED TO OUTSIDE PARTIES WITHOUT THE WRITTEN CONSENT OF VIKING PUMP, INC.

3D

DWG. NO. SHEET 1 OF 1
 GPV-1420-059-U

REV. E.0
 08/03/2020

TORQUE AND CURRENT VS SPEED CURVE

Three Phase Induction Motor - Squirrel Cage

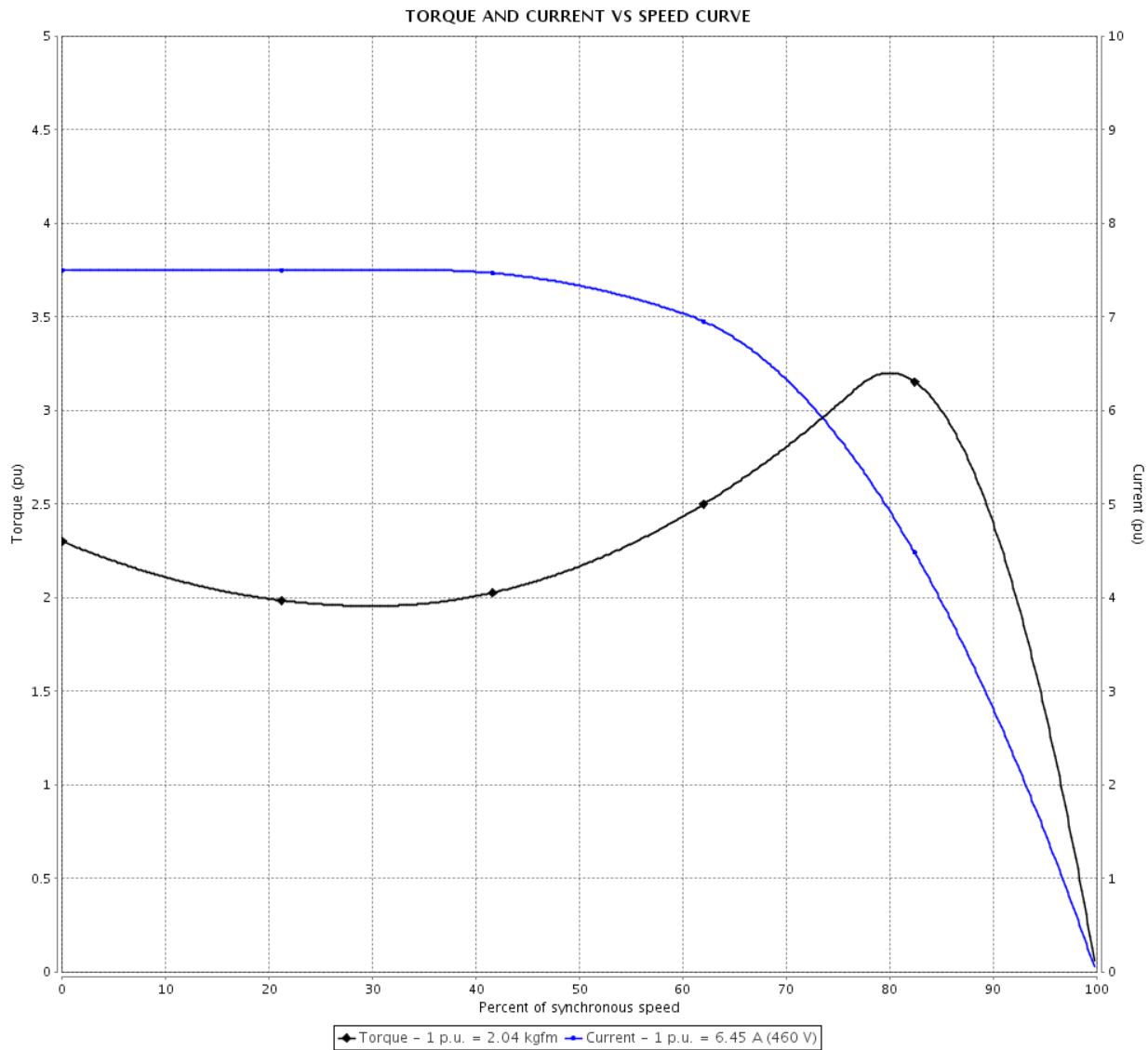


Customer :

Product line : W22 NEMA Premium Efficiency
Three-Phase

Product code : 11416668

Catalog # : 00518ET3E184T-W22



Performance : 208-230/460 V 60 Hz 4P

Rated current	: 14.3-12.9/6.45 A	Moment of inertia (J)	: 0.0169 kgm ²
LRC	: 7.5	Duty cycle	: Cont.(S1)
Rated torque	: 2.04 kgfm	Insulation class	: F
Locked rotor torque	: 229 %	Service factor	: 1.25
Breakdown torque	: 320 %	Temperature rise	: 80 K
Rated speed	: 1755 rpm	Design	: B

Locked rotor time : 27s (cold) 15s (hot)

Rev.	Changes Summary	Performed	Checked	Date
Performed by			Page 2 / 6	Revision
Checked by				
Date	31/05/2018			

LOAD PERFORMANCE CURVE

Three Phase Induction Motor - Squirrel Cage

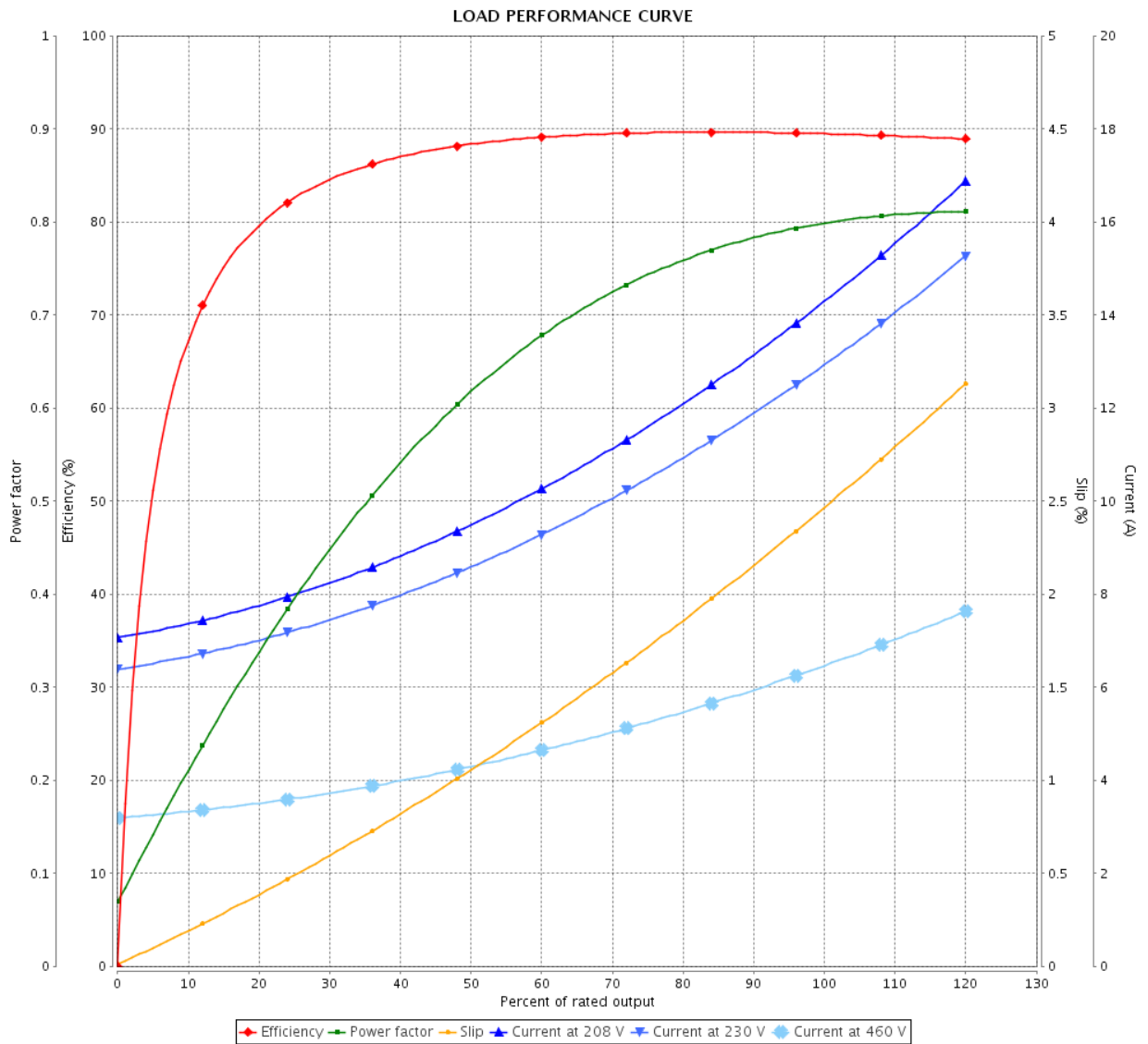


Customer :

Product line : W22 NEMA Premium Efficiency Three-Phase

Product code : 11416668

Catalog # : 00518ET3E184T-W22



Performance : 208-230/460 V 60 Hz 4P

Rated current : 14.3-12.9/6.45 A
 LRC : 7.5
 Rated torque : 2.04 kgfm
 Locked rotor torque : 229 %
 Breakdown torque : 320 %
 Rated speed : 1755 rpm

Moment of inertia (J) : 0.0169 kgm²
 Duty cycle : Cont.(S1)
 Insulation class : F
 Service factor : 1.25
 Temperature rise : 80 K
 Design : B

Rev.	Changes Summary	Performed	Checked	Date
Performed by		Page		Revision
Checked by		3 / 6		
Date		31/05/2018		

THERMAL LIMIT CURVE



Three Phase Induction Motor - Squirrel Cage

Customer :

Product line : W22 NEMA Premium Efficiency
Three-Phase

Product code : 11416668

Catalog # : 00518ET3E184T-W22

Performance : 208-230/460 V 60 Hz 4P

Rated current : 14.3-12.9/6.45 A

LRC : 7.5

Rated torque : 2.04 kgfm

Locked rotor torque : 229 %

Breakdown torque : 320 %

Rated speed : 1755 rpm

Moment of inertia (J) : 0.0169 kgm²

Duty cycle : Cont.(S1)

Insulation class : F

Service factor : 1.25

Temperature rise : 80 K

Design : B

Heating constant

Cooling constant

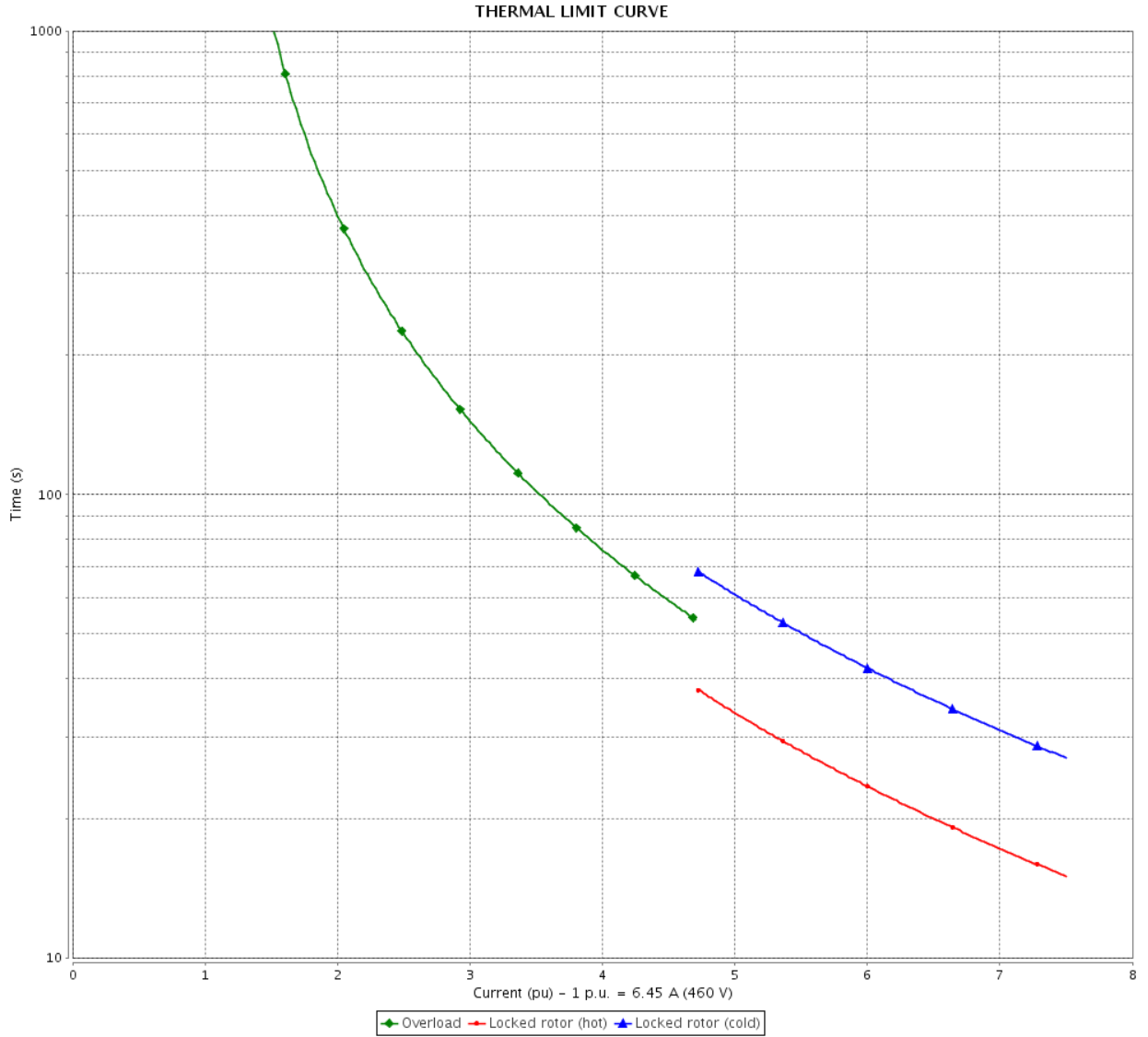
Rev.	Changes Summary	Performed	Checked	Date
Performed by				
Checked by			Page	Revision
Date	31/05/2018		4 / 6	

THERMAL LIMIT CURVE

Three Phase Induction Motor - Squirrel Cage



Customer : _____



Rev.	Changes Summary	Performed	Checked	Date
Performed by				
Checked by				
Date				
			Page	Revision
			5 / 6	

VFD OPERATION CURVE

Three Phase Induction Motor - Squirrel Cage

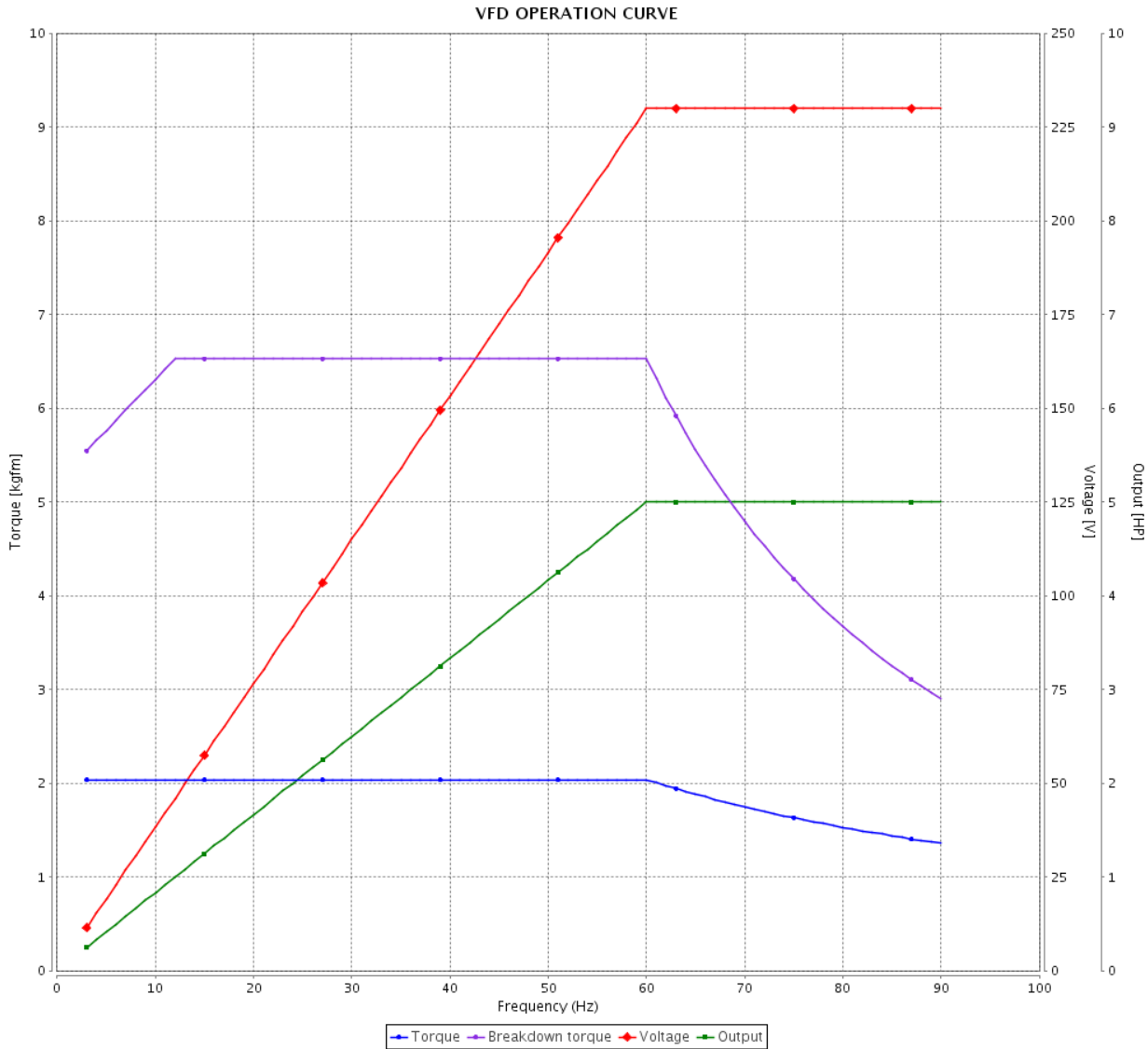


Customer :

Product line : W22 NEMA Premium Efficiency
Three-Phase

Product code : 11416668

Catalog # : 00518ET3E184T-W22

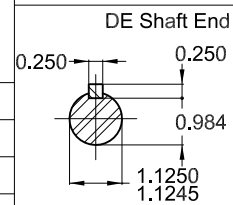
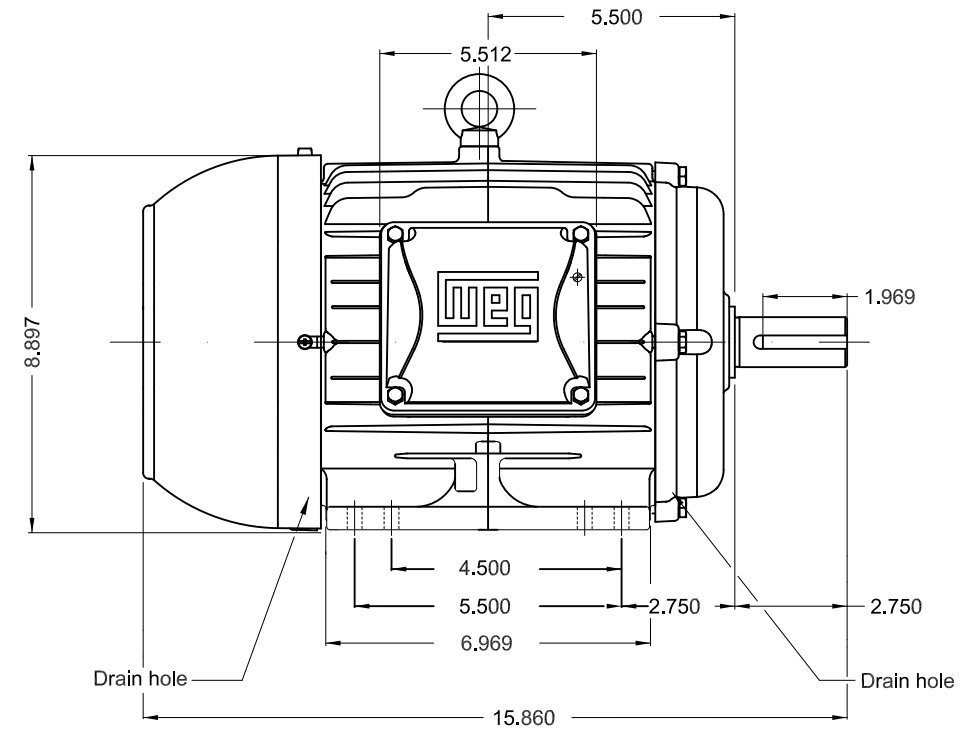
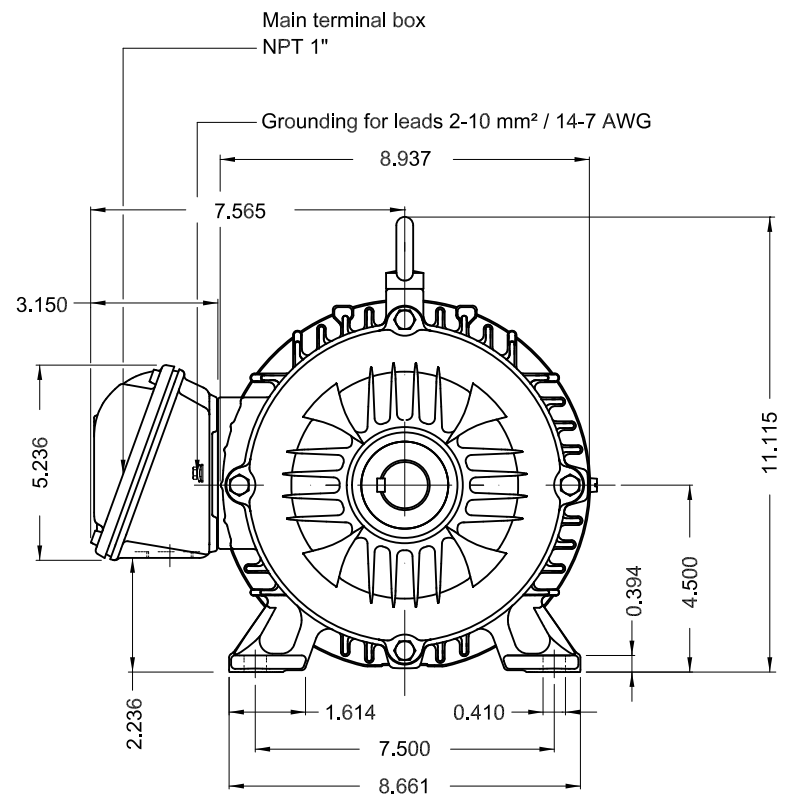


Performance : 208-230/460 V 60 Hz 4P

Rated current : 14.3-12.9/6.45 A
 LRC : 7.5
 Rated torque : 2.04 kgfm
 Locked rotor torque : 229 %
 Breakdown torque : 320 %
 Rated speed : 1755 rpm

Moment of inertia (J) : 0.0169 kgm²
 Duty cycle : Cont.(S1)
 Insulation class : F
 Service factor : 1.25
 Temperature rise : 80 K
 Design : B

Rev.	Changes Summary	Performed	Checked	Date
Performed by			Page 6 / 6	Revision
Checked by				
Date	31/05/2018			



Color RAL 5009
 Painting plan 207A
 Mounting NEMA F-1
 Mounting B3R(D)

5 HP 04 Poles 60Hz A

ECM	LOC	SUMMARY OF MODIFICATIONS	EXECUTED	CHECKED	RELEASED	DATE	VER
EXECUTED	USERADMIN	THREE PHASE W22 MOTOR - NEMA PREMIUM EFF FRAME 182/4T IP55 TEFC					
CHECKED							
RELEASED							
REL DT	WMO	Jaragua do Sul	Product Engineering	SHEET 1 / 1			

PREVIEW

WDD

