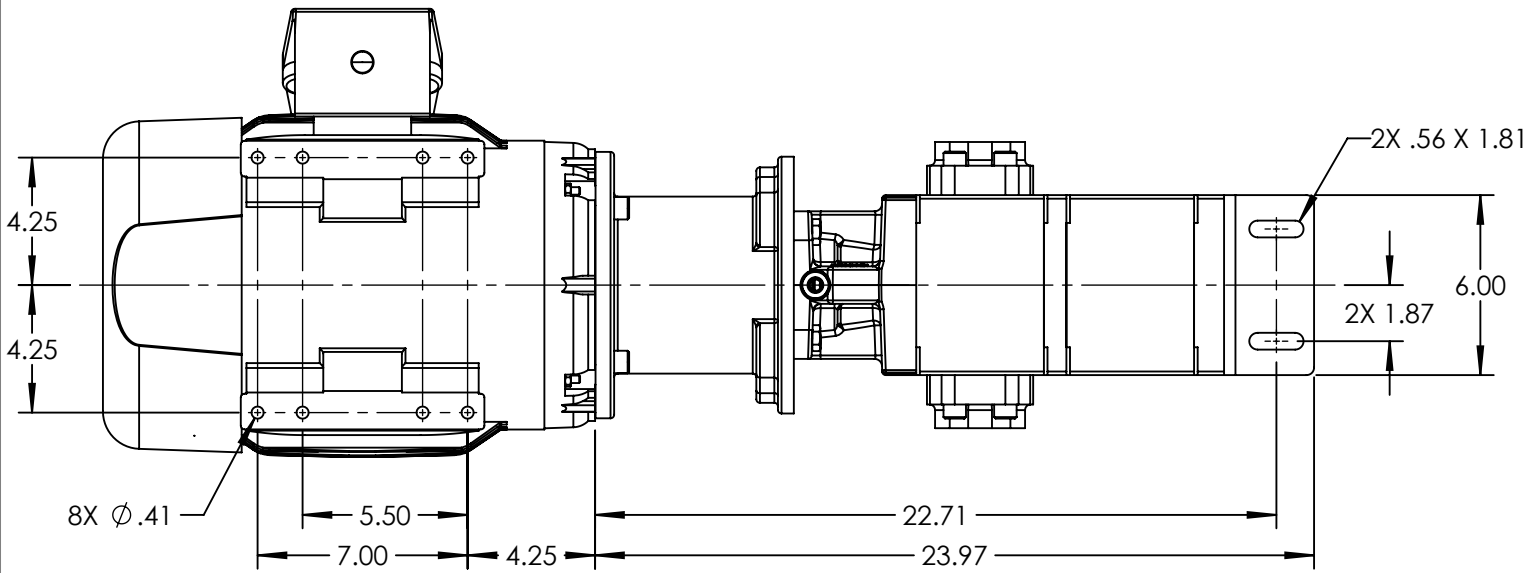
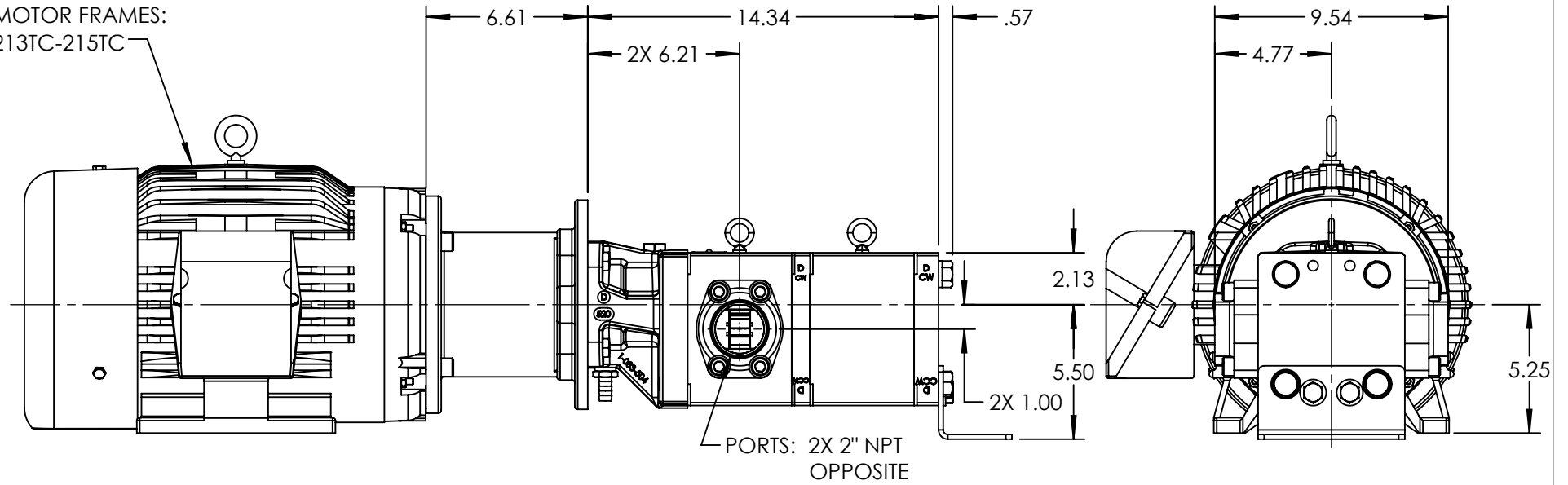


MOTOR FRAMES:
213TC-215TC



NOTES:

1. ALL DIMENSIONS ARE FOR REFERENCE ONLY.

STANDARD MODELS: GB-41018-G00-M, GB-41018-G10-M

STATE	Released	10/18/2022
DRAWN	bmanternach	10/18/2022
CHECKED	BAM	10/18/2022

DIMENSIONS ARE IN
INCHES
PROJECT:
WAS:



VIKING PUMP, INC.
A Unit of IDEX Corporation
Cedar Falls, IA 50613
U.S.A.

THIS DRAWING IS THE PROPERTY OF
VIKING PUMP, INC. AND IS PROPRIETARY
IN GENERAL AND DETAIL. IT SHALL NOT BE
COPIED OR ITS CONTENTS REVEALED TO
OUTSIDE PARTIES WITHOUT THE WRITTEN
CONSENT OF VIKING PUMP, INC.

3D

DWG. NO. SHEET 1 OF 1
GPV-1018-034-U

REV. A.0
10/18/2022

DATA SHEET

Three Phase Induction Motor - Squirrel Cage



Customer :

Product line : W22 NEMA Premium Efficiency Three-Phase Product code : 12445969
Catalog # : 00718ET3E213TC-W22

Frame	: 213/5TC	Locked rotor time	: 36s (cold) 20s (hot)
Output	: 7.5 HP (5.5 kW)	Temperature rise	: 80 K
Poles	: 4	Duty cycle	: Cont.(S1)
Frequency	: 60 Hz	Ambient temperature	: -20°C to +40°C
Rated voltage	: 208-230/460 V	Altitude	: 1000 m.a.s.l.
Rated current	: 19.9-18.4/9.18 A	Protection degree	: IP55
L. R. Amperes	: 141-130/65.2 A	Cooling method	: IC411 - TEFC
LRC	: 7.1x(Code H)	Mounting	: F-1
No load current	: 7.59-8.80/4.40 A	Rotation ¹	: Both (CW and CCW)
Rated speed	: 1765 rpm	Noise level ²	: 58.0 dB(A)
Slip	: 1.94 %	Starting method	: Direct On Line
Rated torque	: 22.0 ft.lb	Approx. weight ³	: 169 lb
Locked rotor torque	: 220 %		
Breakdown torque	: 310 %		
Insulation class	: F		
Service factor	: 1.25		
Moment of inertia (J)	: 1.34 sq.ft.lb		
Design	: B		

Output	25%	50%	75%	100%	Foundation loads	
Efficiency (%)	88.6	89.5	91.0	91.7	Max. traction	: 357 lb
Power Factor	0.40	0.66	0.76	0.82	Max. compression	: 525 lb

	<u>Drive end</u>	<u>Non drive end</u>
Bearing type	: 6308 ZZ	6207 ZZ
Sealing	: V'Ring	V'Ring
Lubrication interval	: -	-
Lubricant amount	: -	-
Lubricant type	: Mobil Polyrex EM	

Notes

This revision replaces and cancel the previous one, which must be eliminated.

- (1) Looking the motor from the shaft end.
- (2) Measured at 1m and with tolerance of +3dB(A).
- (3) Approximate weight subject to changes after manufacturing process.
- (4) At 100% of full load.

These are average values based on tests with sinusoidal power supply, subject to the tolerances stipulated in NEMA MG-1.

Rev.	Changes Summary	Performed	Checked	Date
Performed by				
Checked by			Page	Revision
Date	06/11/2019		1 / 6	

TORQUE AND CURRENT VS SPEED CURVE

Three Phase Induction Motor - Squirrel Cage



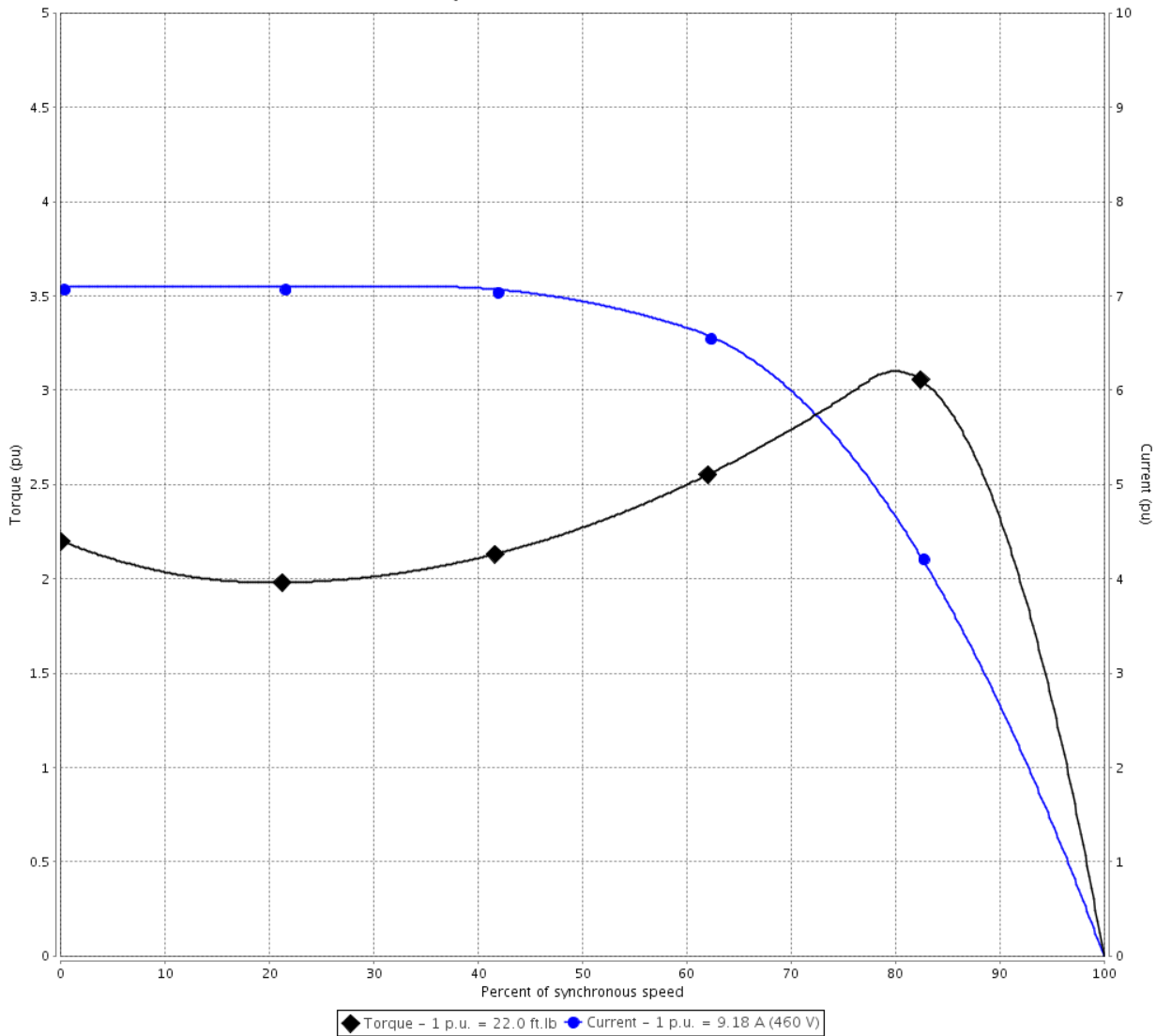
Customer :

Product line : W22 NEMA Premium Efficiency
Three-Phase

Product code : 12445969

Catalog # : 00718ET3E213TC-W22

TORQUE AND CURRENT VS SPEED CURVE



Performance : 208-230/460 V 60 Hz 4P

Rated current	: 19.9-18.4/9.18 A	Moment of inertia (J)	: 1.34 sq.ft.lb
LRC	: 7.1	Duty cycle	: Cont.(S1)
Rated torque	: 22.0 ft.lb	Insulation class	: F
Locked rotor torque	: 220 %	Service factor	: 1.25
Breakdown torque	: 310 %	Temperature rise	: 80 K
Rated speed	: 1765 rpm	Design	: B

Locked rotor time : 36s (cold) 20s (hot)

Rev.	Changes Summary	Performed	Checked	Date
Performed by			Page 2 / 6	Revision
Checked by				
Date	06/11/2019			

LOAD PERFORMANCE CURVE

Three Phase Induction Motor - Squirrel Cage

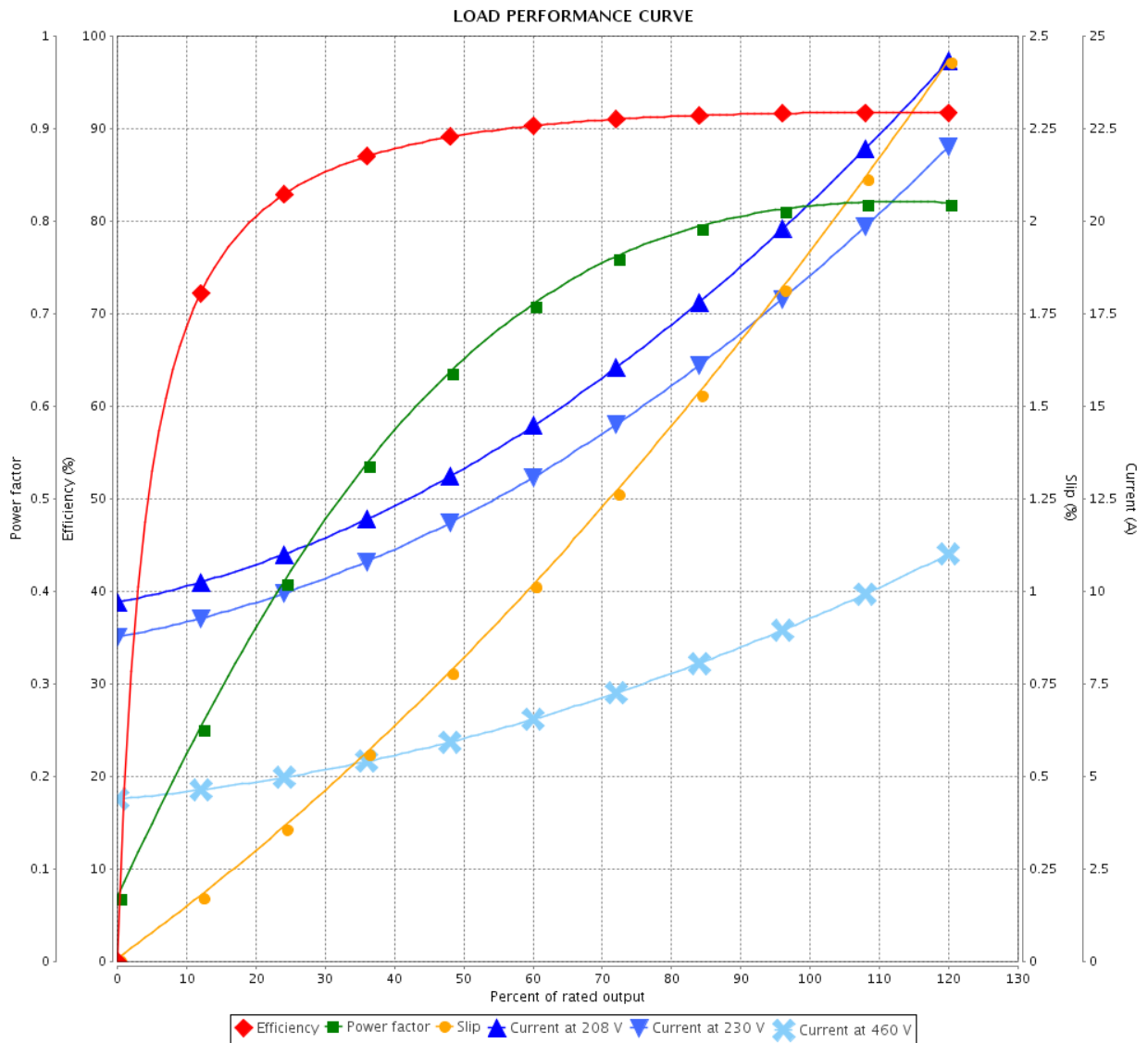


Customer :

Product line : W22 NEMA Premium Efficiency Three-Phase

Product code : 12445969

Catalog # : 00718ET3E213TC-W22



Performance : 208-230/460 V 60 Hz 4P

Rated current : 19.9-18.4/9.18 A
 LRC : 7.1
 Rated torque : 22.0 ft.lb
 Locked rotor torque : 220 %
 Breakdown torque : 310 %
 Rated speed : 1765 rpm

Moment of inertia (J) : 1.34 sq.ft.lb
 Duty cycle : Cont.(S1)
 Insulation class : F
 Service factor : 1.25
 Temperature rise : 80 K
 Design : B

Rev.	Changes Summary	Performed	Checked	Date
Performed by		Page		Revision
Checked by		3 / 6		
Date		06/11/2019		

THERMAL LIMIT CURVE



Three Phase Induction Motor - Squirrel Cage

Customer :

Product line : W22 NEMA Premium Efficiency
Three-Phase

Product code : 12445969

Catalog # : 00718ET3E213TC-W22

Performance : 208-230/460 V 60 Hz 4P

Rated current : 19.9-18.4/9.18 A
LRC : 7.1
Rated torque : 22.0 ft.lb
Locked rotor torque : 220 %
Breakdown torque : 310 %
Rated speed : 1765 rpm

Moment of inertia (J) : 1.34 sq.ft.lb
Duty cycle : Cont.(S1)
Insulation class : F
Service factor : 1.25
Temperature rise : 80 K
Design : B

Heating constant

Cooling constant

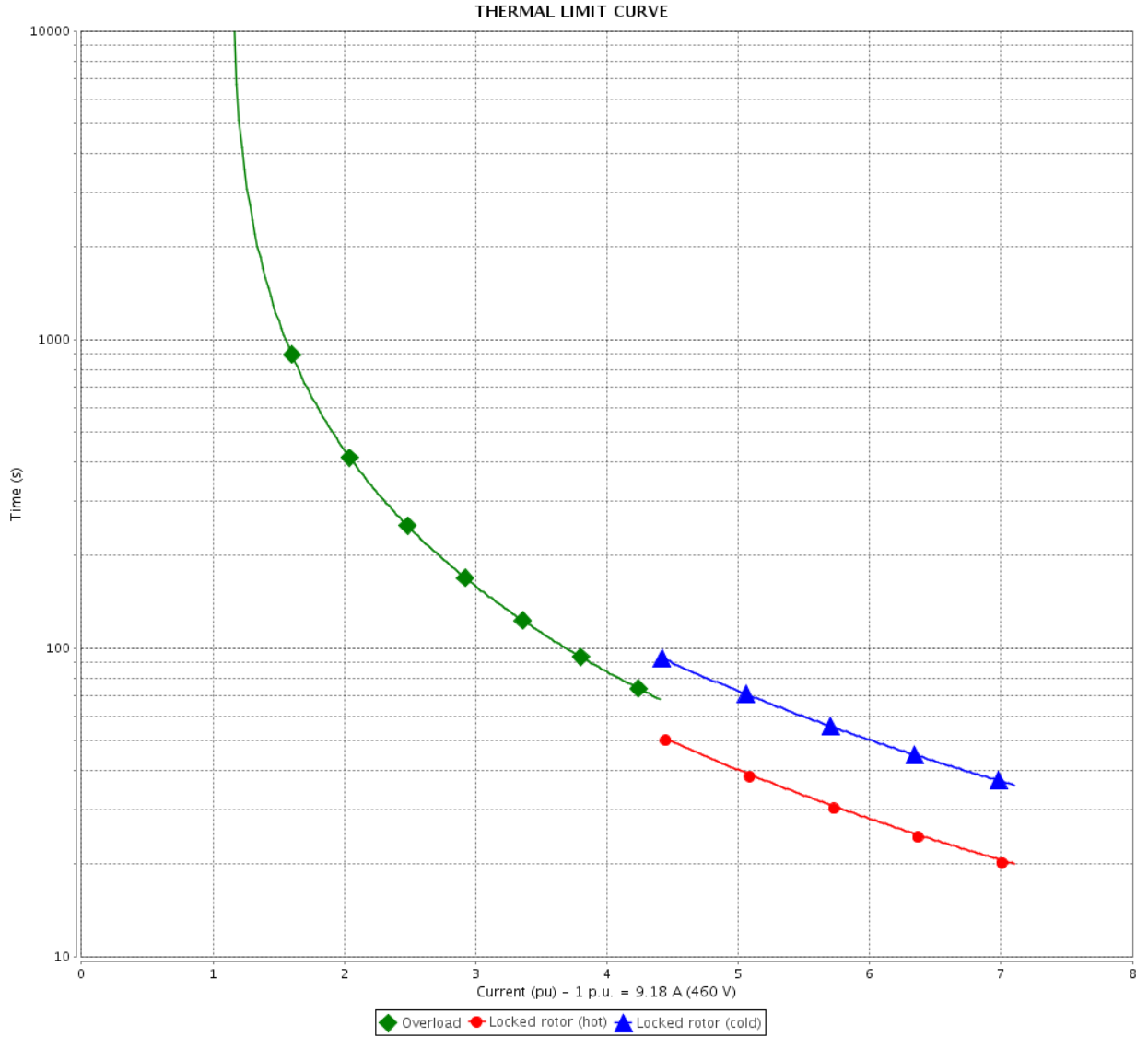
Rev.	Changes Summary	Performed	Checked	Date
Performed by			Page 4 / 6	Revision
Checked by				
Date	06/11/2019			

THERMAL LIMIT CURVE

Three Phase Induction Motor - Squirrel Cage



Customer : _____



Rev.	Changes Summary	Performed	Checked	Date
Performed by		Page 5 / 6		Revision
Checked by				
Date				

VFD OPERATION CURVE

Three Phase Induction Motor - Squirrel Cage

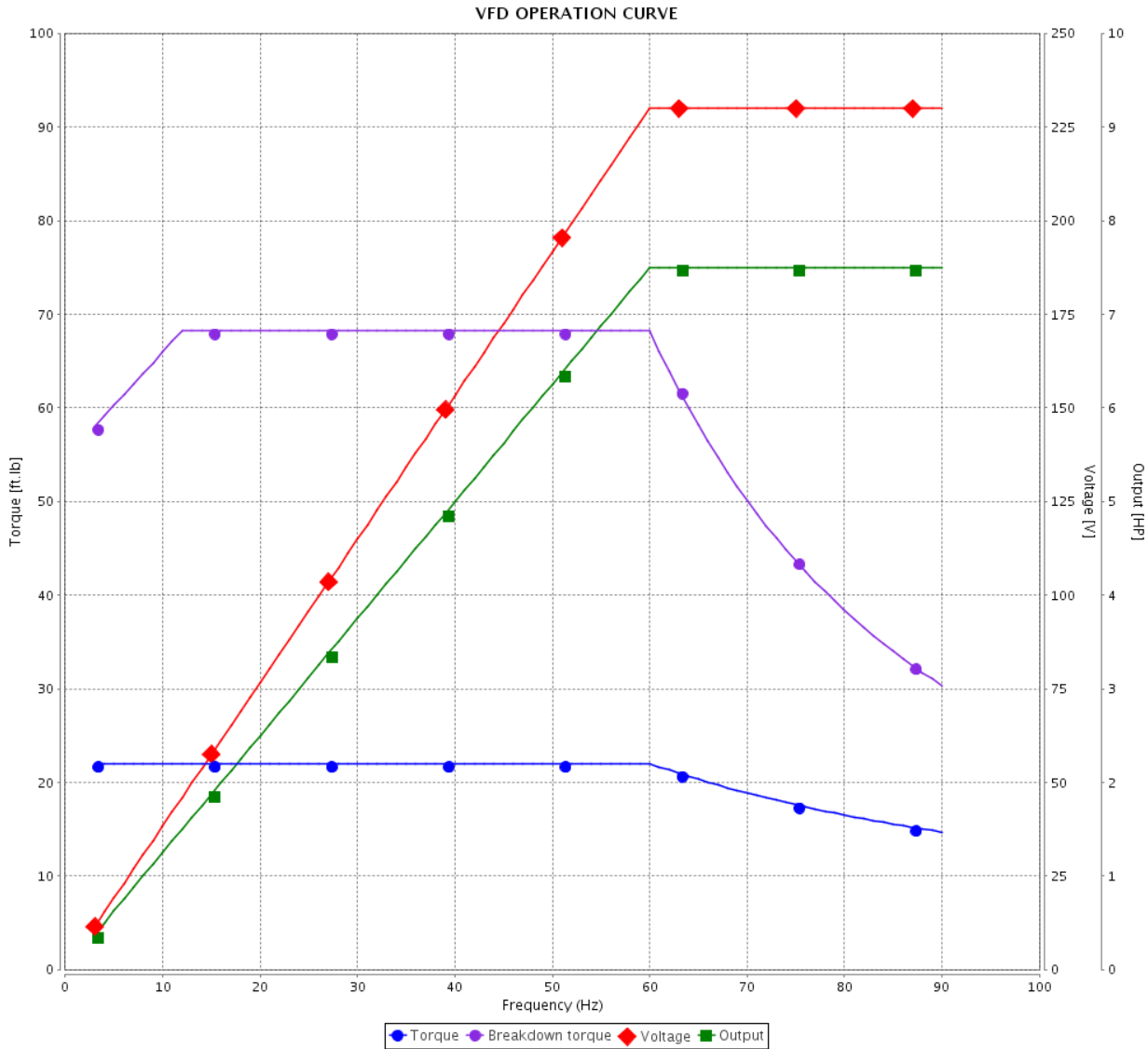


Customer :

Product line : W22 NEMA Premium Efficiency Three-Phase

Product code : 12445969

Catalog # : 00718ET3E213TC-W22



Performance : 208-230/460 V 60 Hz 4P

Rated current : 19.9-18.4/9.18 A
 LRC : 7.1
 Rated torque : 22.0 ft.lb
 Locked rotor torque : 220 %
 Breakdown torque : 310 %
 Rated speed : 1765 rpm

Moment of inertia (J) : 1.34 sq.ft.lb
 Duty cycle : Cont.(S1)
 Insulation class : F
 Service factor : 1.25
 Temperature rise : 80 K
 Design : B

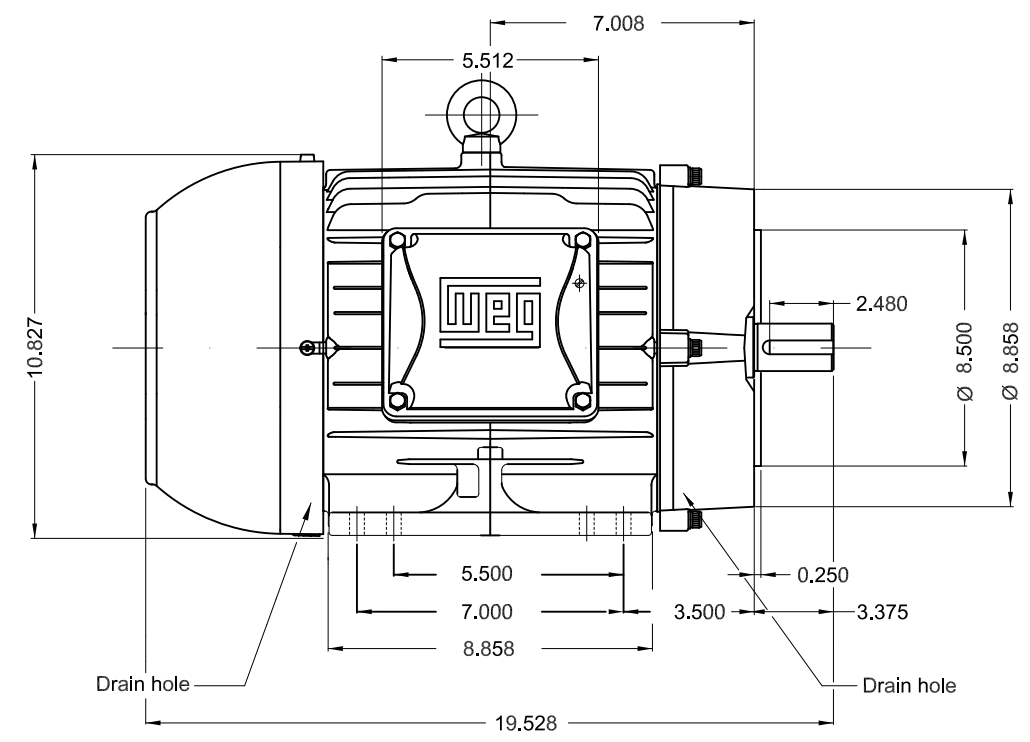
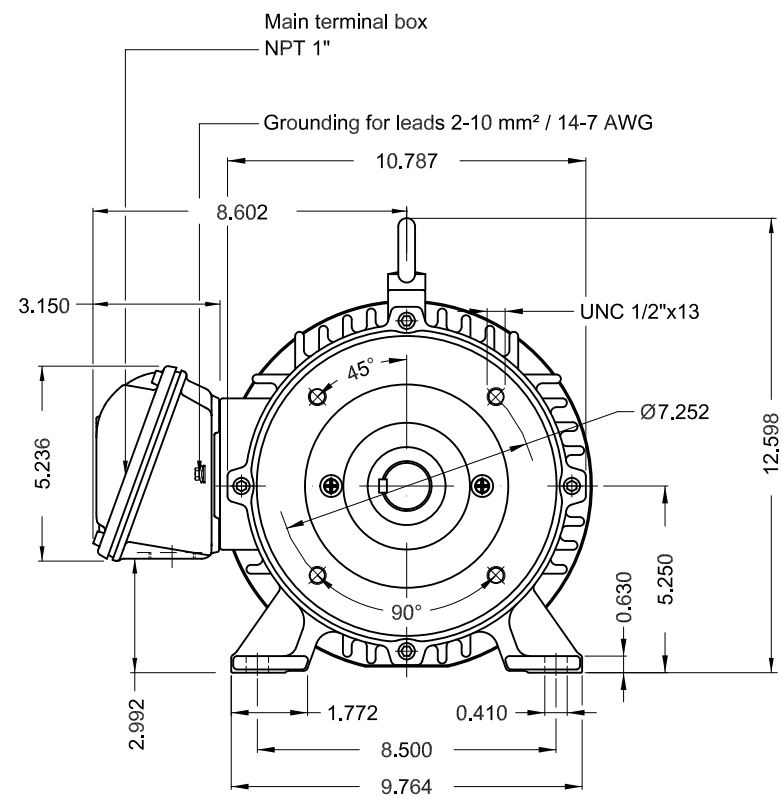
Rev.	Changes Summary	Performed	Checked	Date
Performed by		Page		Revision
Checked by		6 / 6		
Date	06/11/2019			

1 2 3 4 5 6

A

B

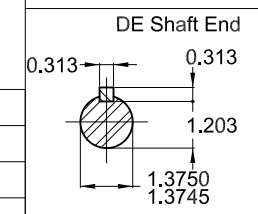
C



D

E

Bearing cap
Color RAL 5009
Painting plan 207A
Mounting B34R(D)



7.5 HP 04 Poles 60Hz A

ECM	LOC	SUMMARY OF MODIFICATIONS	EXECUTED	CHECKED	RELEASED	DATE	VER
EXECUTED	PIRWBUSER	THREE PHASE W22 MOTOR - NEMA PREMIUM EFF					
CHECKED		FRAME 213/5TC IP55 TEFC					
RELEASED							
REL DT.	WMO	Jaragua do Sul	Product Engineering				

PREVIEW
WDD



SHEET 1 / 1

Dimensions in inches XME A3

**W22**

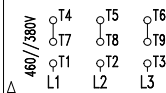
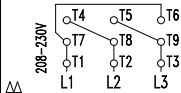
CC029A

® Inverter Duty Motor
Severe Duty

12445969

MADE IN MEXICO MODEL 00718ET3E213TC-W22

PH 3	FR 213/5TC	HP(kW) 7.5(5.5)	Hz 60	SF 1.25	PF 0.82
V 230/460	A 18.4/9.18	RPM 1765	INS. CL. F	ΔT 80 K	IP55
NEMA NOM EFF 91.7 %			DES B DUTY CONT.		AMB 40°C
ENCL TEFC	SFA 23.0/11.5	USABLE @208V 19.9 A	SF 1.15	SFA 22.9	
7.5HP 5.5kW 50Hz 380V 11.0A 1455RPM SF1.25 EFF 89.6% (IE3)					CODE H



→6308-ZZ

→6207-ZZ

MOBIL POLYREX EM

ALT 1000 m.a.s.l. | 168 Lbs

For 60Hz: Class I, Div 2, Gr. A, B, C and D - T3
 Class I, Zone 2, IIC - T3
 Class II, Div 2, Gr. F and G - T4
 For use on PWM, Gr. A, B, C, D and F
 VT 1000:1, CT 20:1, 1.0SF, T3A

FOR SAFE AREA
MOD.TE1BFOXON