

ROTARY LOBE PRODUCT LINE & CIRCUMFERENTIAL PISTON PRODUCT LINE:

Revolution® Series Stainless Steel Pumps

| | |
|---------|--------|
| Section | 1726 |
| Page | 1726.1 |
| Issue | A |

TABLE OF CONTENTS

| | |
|--|---|
| Related Products | 1 |
| Operating Range..... | 1 |
| Series Description | 1 |
| Features & Benefits | 2 |
| Standard Materials of Construction | 2 |
| Cutaway View & Pump Features..... | 3 |
| Model Number Key | 4 |
| Specifications | 4 |
| Dimensions – All Models – Inches | 5 |
| Dimensions – All Models – Millimeters | 6 |
| Dimensions – Rotorcase Jacket For Heating/Cooling..... | 7 |
| Dimensions – Front Cover Jacket For Heating/Cooling..... | 7 |
| NPSH Required | 8 |

SERIES DESCRIPTION

The Revolution® Series is a positive displacement pump with both rotary lobe and circumferential piston rotor options. This is the ideal solution for Food and Beverage, Personal Care, Pharmaceutical, Confectionary and a wide range of Light Chemical Applications due to its cleanability, superior performance, and ease of maintenance.

US 3-A, European CE, UKCA and ATEX compliant models and specifications are available.

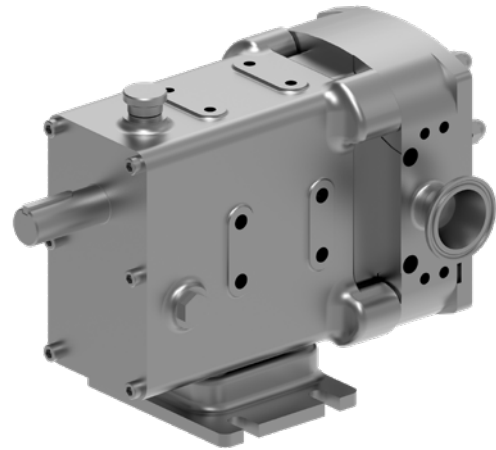
It can handle flows up to 399 GPM (91 m³/h).



RELATED PRODUCTS

Stainless Steel, TRA®20 Series: Catalog Section 1721

Stainless Steel, TRA®10 Series: Catalog Section 1722



Revolution® Series

OPERATING RANGE

| SERIES | NOMINAL FLOW | | MAXIMUM PRESSURE | | TEMPERATURE | | VISCOSITY RANGE | |
|-------------|--------------|--------|------------------|-----|-------------|---------|-----------------|------------|
| | GPM | m³/h | PSI | Bar | °F | °C | SSU | cSt |
| Revolution® | 0 - 399 | 0 - 91 | 450 | 31 | to +300 | to +150 | to 910,000 | to 200,000 |

| | |
|---------|--------|
| Section | 1726 |
| Page | 1726.2 |
| Issue | A |

ROTARY LOBE PRODUCT LINE & CIRCUMFERENTIAL PISTON PRODUCT LINE: Revolution® Series Stainless Steel Pumps

FEATURES & BENEFITS

- Cleanability
 - » Efficient CIP (Clean In Place) ability is standard for all Revolution pumps
 - » Self draining pump head from innovative cusps & cusp reliefs
 - » Innovative seal design with no dead zones & a dynamic leak path
 - » No dead zones on front cover
- Ease of Maintenance
 - » Fast, front loading seal changes while pump is still in line
 - » Front access shimming for setting rotor clearance significantly reduces maintenance time
 - » Convenient preventive maintenance parts kits available
- Performance
 - » Improved volumetric efficiency in low & high viscosity applications
 - » Up to 15% better flow performance than competitors' CIP configuration with CPP version
 - » Gentle handling of solids & shear sensitive products
 - » Long-life durability from heavy duty shafts, bearings & helical gears
 - » Less overhung load

STANDARD MATERIALS OF CONSTRUCTION

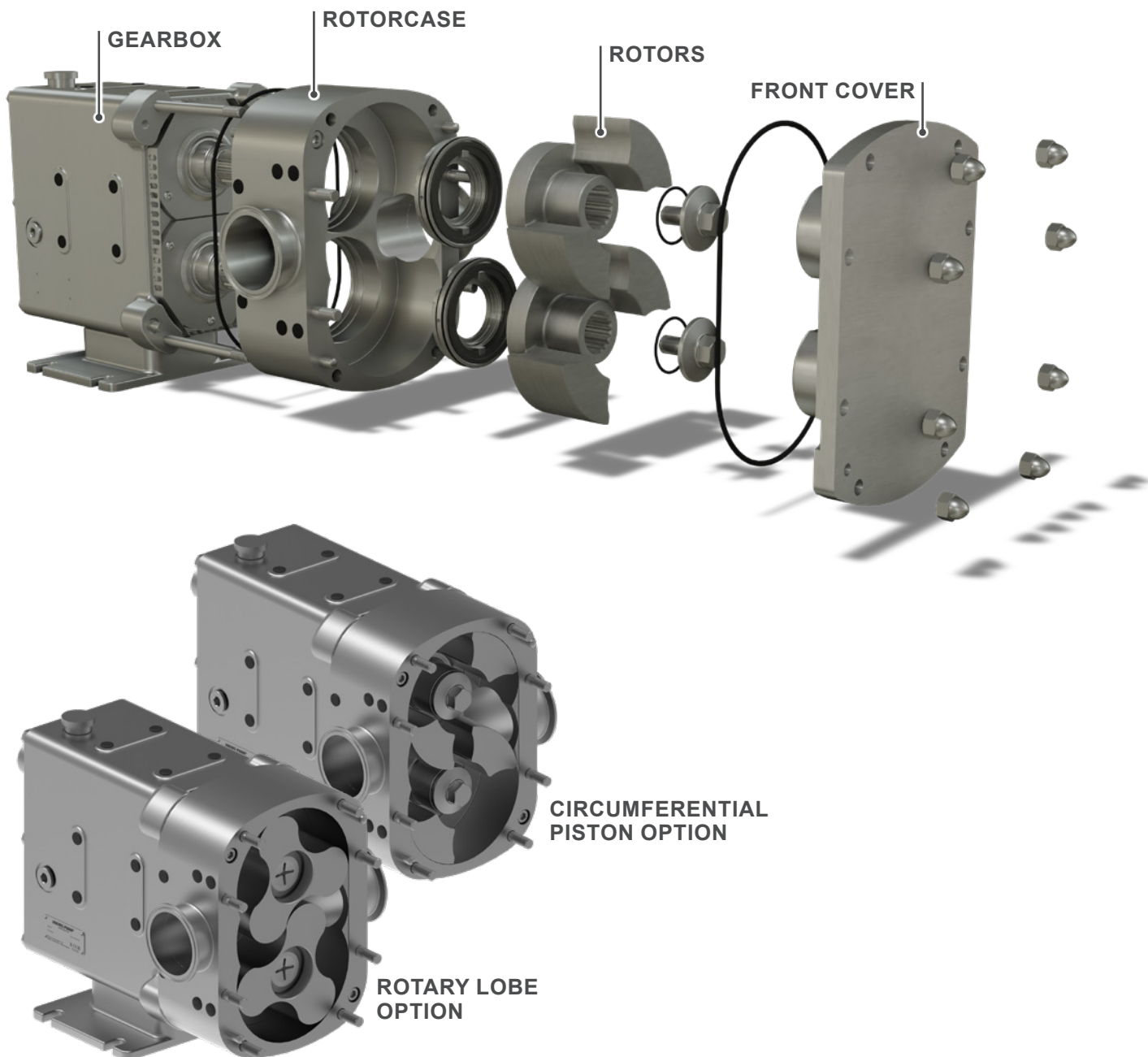
| Component | Standard Material |
|-----------------|-----------------------------------|
| Rotorcase | 316L Stainless Steel |
| Front Cover | 316L Stainless Steel |
| Rotors | 316L Stainless Steel or Alloy 808 |
| Rotor Retainers | 316L Stainless Steel |
| Shafts | 316L Stainless Steel |
| Setting Ring | 316L Stainless Steel |
| Gearbox | 304 Stainless Steel |
| Gearbox Cover | 304 Stainless Steel |
| Foot | 304 Stainless Steel |

ROTARY LOBE PRODUCT LINE & CIRCUMFERENTIAL PISTON PRODUCT LINE:

Revolution® Series Stainless Steel Pumps

| | |
|---------|--------|
| Section | 1726 |
| Page | 1726.3 |
| Issue | A |

CUTAWAY VIEW & PUMP FEATURES



| | |
|---------|--------|
| Section | 1726 |
| Page | 1726.4 |
| Issue | A |

ROTARY LOBE PRODUCT LINE & CIRCUMFERENTIAL PISTON PRODUCT LINE: Revolution® Series Stainless Steel Pumps

MODEL NUMBER KEY

| | | | | | | | | |
|---|----------|----------|-----------------------------|---|----------|----------|----------|---|
| C | P | P | R | 0 | 3 | 0 | 0 | X |
| Rotor Type: CPP = Circumferential Piston Pump RLP = Rotary Lobe Pump | | | Pump Range (Revolution®) | Model Size Size 2: Size 3: Size 4: Size 5: | | | | Pump Type: X = Setup for CPP and RLP P = Setup for CPP L = Setup for RLP |
| | | | | 0150 | 0200 | 0450 | 1800 | |
| | | | | 0160 | 0300 | 0600 | 2200 | |
| | | | | 0180 | 0400 | 0800 | 2600 | |
| | | | | | | | 1300 | |

SPECIFICATIONS

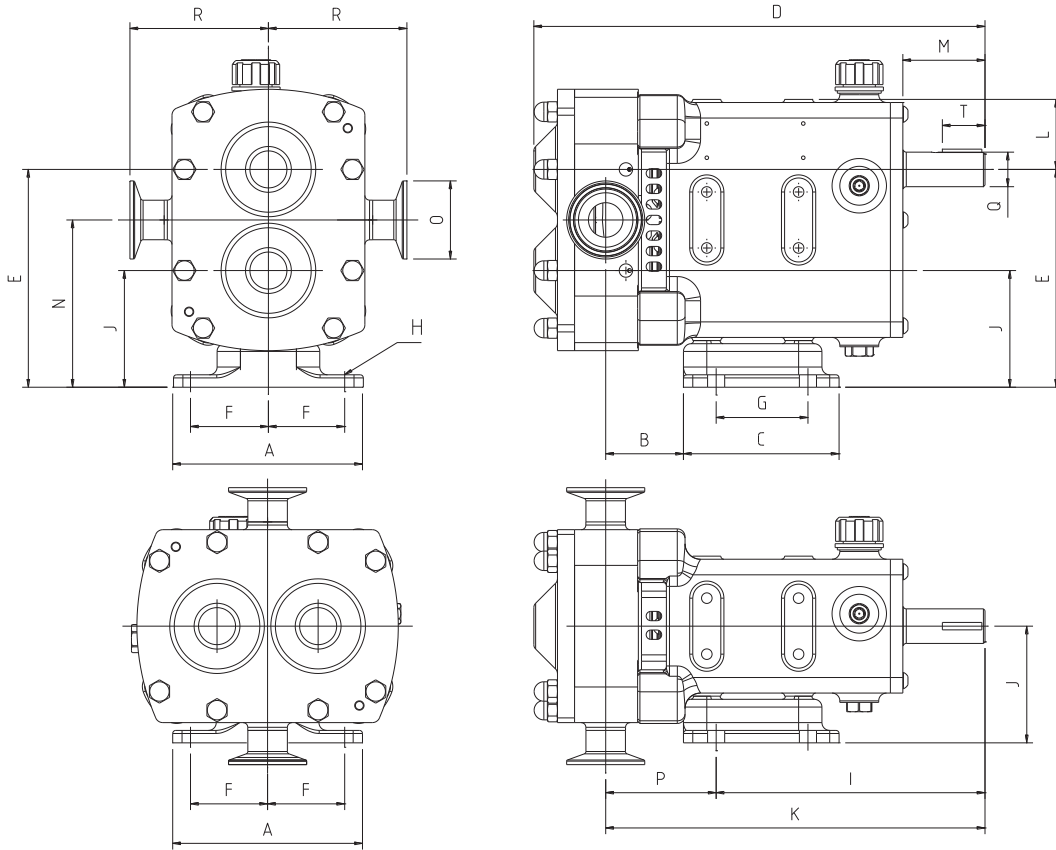
| Size | Model Number | Standard Port Size | Nominal Pump Rating (100 SSU & below) | | | Displacement | | Maximum Differential Pressure | | Maximum Recommended Temperature for Standard Pump | | Approx. Shipping Weight with Grease | |
|--------|--------------|--------------------|---------------------------------------|------|------|--------------|--------|-------------------------------|-----|---|-----|-------------------------------------|-----|
| | | Inches | GPM | m³/h | RPM | USG/rev. | l/rev. | PSIG | BAR | °F | °C | Lbs. | Kg. |
| Size 2 | R0150X | 1.5 | 11.6 | 2.6 | 800 | 0.015 | 0.055 | 305 | 21 | 300 | 150 | 48.5 | 22 |
| | R0150X | 1.5 | 16 | 3.6 | 1000 | 0.016 | 0.061 | 218 | 15 | 300 | 150 | | |
| | R0160L | 1.5 | 21.4 | 4.9 | 1000 | 0.021 | 0.081 | 145 | 10 | 300 | 150 | | |
| | R0180P | 1.5 | 23.2 | 5.3 | 800 | 0.029 | 0.11 | 203 | 14 | 300 | 150 | 58 | 26 |
| | R0180L | 1.5 | 29.1 | 6.6 | 1000 | 0.029 | 0.11 | 102 | 7 | 300 | 150 | | |
| Size 3 | R0200X | 1.5 | 34 | 8 | 800 | 0.04 | 0.16 | 305 | 21 | 300 | 150 | 97 | 44 |
| | R0200X | 1.5 | 47 | 11 | 1000 | 0.05 | 0.18 | 203 | 14 | 300 | 150 | | |
| | R0300X | 1.5 | 48 | 11 | 800 | 0.06 | 0.23 | 247 | 17 | 300 | 150 | 99 | 45 |
| | R0300X | 1.5 | 66 | 15 | 1000 | 0.07 | 0.25 | 131 | 9 | 300 | 150 | | |
| | R0400X | 2 | 62 | 14 | 800 | 0.08 | 0.29 | 203 | 14 | 300 | 150 | 101 | 46 |
| | R0400X | 2 | 86 | 20 | 1000 | 0.09 | 0.33 | 102 | 7 | 300 | 150 | | |
| Size 4 | R0450X | 2 | 67 | 15 | 600 | 0.11 | 0.42 | 450 | 31 | 300 | 150 | 200 | 91 |
| | R0450X | 2 | 95 | 22 | 800 | 0.12 | 0.45 | 218 | 15 | 300 | 150 | | |
| | R0600P | 2.5 | 92 | 21 | 600 | 0.15 | 0.58 | 305 | 21 | 300 | 150 | 212 | 96 |
| | R0800X | 2.5 | 122 | 28 | 600 | 0.2 | 0.77 | 247 | 17 | 300 | 150 | | |
| | R0800X | 2.5 | 173 | 39 | 800 | 0.22 | 0.82 | 131 | 9 | 300 | 150 | 213 | 97 |
| | R1300X | 3 | 159 | 36 | 600 | 0.26 | 1 | 203 | 14 | 300 | 150 | | |
| | R1300X | 3 | 226 | 51 | 800 | 0.28 | 1.07 | 102 | 7 | 300 | 150 | 231 | 105 |
| Size 5 | R1800X | 3 | 231 | 53 | 600 | 0.39 | 1.46 | 450 | 31 | 300 | 150 | | |
| | R1830X | 3 | 231 | 53 | 600 | 0.39 | 1.46 | 450 | 31 | 300 | 150 | | |
| | R1800X | 3 | 246 | 56 | 600 | 0.41 | 1.55 | 218 | 15 | 300 | 150 | | |
| | R2200X | 4 | 313 | 71 | 600 | 0.52 | 1.98 | 305 | 21 | 300 | 150 | 510 | 231 |
| | R2230X | 4 | 313 | 71 | 600 | 0.52 | 1.98 | 305 | 21 | 300 | 150 | | |
| | R2200X | 4 | 333 | 76 | 600 | 0.55 | 2.1 | 116 | 8 | 300 | 150 | 519 | 235 |
| | R2600P | 4 | 399 | 91 | 600 | 0.67 | 2.52 | 203 | 14 | 300 | 150 | | |
| | R2630P | 4 | 399 | 91 | 600 | 0.67 | 2.52 | 203 | 14 | 300 | 150 | | |

ROTARY LOBE PRODUCT LINE & CIRCUMFERENTIAL PISTON PRODUCT LINE:

Revolution® Series Stainless Steel Pumps

| | |
|---------|--------|
| Section | 1726 |
| Page | 1726.5 |
| Issue | A |

DIMENSIONS – ALL MODELS – INCHES



| Size | Pump Type | Model | A | B | C | D | E | F | G | H | I | J | K | L | M | N | O | P | Q | R1 | S | T |
|------|-----------|--------|------|------|-------|-------|-------|------|------|-------------|-------|------|-------|------|------|------|-------|------|------|------|-------|----------------|
| 2 | CPP | R0150X | 4.80 | 1.97 | 3.94 | 11.42 | 5.51 | 1.93 | 2.32 | 0.43x0.47 | 6.81 | 2.95 | 9.61 | 1.77 | 2.09 | 4.23 | 1/1.5 | 2.80 | 0.87 | 3.50 | 7.01 | 0.187" x1" |
| | RLP | R0150X | 4.80 | 1.97 | 3.94 | 11.04 | 5.51 | 1.93 | 2.32 | 0.43 X 0.47 | 6.81 | 2.95 | 9.61 | 1.77 | 2.09 | 4.23 | 1.00 | 2.80 | 0.87 | 3.50 | 7.01 | 0.187" X 1" |
| | RLP | R0160L | 4.80 | 2.05 | 3.94 | 11.00 | 5.51 | 1.93 | 2.32 | 0.43x0.47 | 6.81 | 2.95 | 9.69 | 1.77 | 2.09 | 4.23 | 1.50 | 2.87 | 0.87 | 3.50 | 7.01 | 0.187" X 1" |
| | CPP | R0180P | 4.80 | 2.20 | 3.94 | 11.46 | 5.51 | 1.93 | 2.32 | 0.43x0.47 | 6.81 | 2.95 | 9.84 | 1.77 | 2.09 | 4.23 | 1.50 | 3.03 | 0.87 | 3.50 | 7.01 | 0.187" x1" |
| | RLP | R0180L | 4.80 | 2.20 | 3.94 | 11.26 | 5.51 | 1.93 | 2.32 | 0.43x0.47 | 6.81 | 2.95 | 9.84 | 1.77 | 2.09 | 4.23 | 1.50 | 3.03 | 0.87 | 3.50 | 7.01 | 0.187" X 1" |
| 3 | CPP | R0200X | 5.75 | 2.76 | 4.09 | 13.64 | 6.85 | 2.32 | 2.56 | 0.43 X 0.55 | 7.95 | 3.54 | 11.46 | 2.24 | 2.68 | 5.20 | 1.50 | 3.50 | 1.25 | 4.25 | 8.50 | 0.25" X 1.77" |
| | RLP | R0200X | 5.75 | 2.76 | 4.09 | 13.27 | 6.85 | 2.32 | 2.56 | 0.43x0.55 | 7.95 | 3.54 | 11.46 | 2.24 | 2.68 | 5.20 | 1.50 | 3.50 | 1.25 | 4.25 | 8.50 | 0.25" X 1.77" |
| | CPP | R0300X | 5.75 | 2.89 | 4.09 | 13.64 | 6.85 | 2.32 | 2.56 | 0.43x0.55 | 7.95 | 3.54 | 11.59 | 2.24 | 2.68 | 5.20 | 1.50 | 3.64 | 1.25 | 4.25 | 8.50 | 0.25" X 1.77" |
| | RLP | R0300X | 5.75 | 2.89 | 4.09 | 13.66 | 6.85 | 2.32 | 2.56 | 0.43 X 0.55 | 7.95 | 3.54 | 11.59 | 2.24 | 2.68 | 5.20 | 1.50 | 3.64 | 1.25 | 4.25 | 8.50 | 0.25" X 1.77" |
| | CPP | R0400X | 5.75 | 3.15 | 4.09 | 14.04 | 6.85 | 2.32 | 2.56 | 0.43x0.55 | 7.95 | 3.54 | 11.85 | 2.24 | 2.68 | 5.20 | 2.00 | 3.90 | 1.25 | 4.25 | 8.50 | 0.25" X 1.77" |
| | RLP | R0400X | 5.75 | 3.15 | 4.09 | 14.06 | 6.85 | 2.32 | 2.56 | 0.43x0.55 | 7.95 | 3.54 | 11.85 | 2.24 | 2.68 | 5.20 | 2.00 | 3.90 | 1.25 | 4.25 | 8.50 | 0.25" X 1.77" |
| 4 | CPP | R0450X | 8.27 | 3.50 | 6.54 | 18.02 | 9.57 | 3.50 | 4.13 | 0.51 X 0.63 | 10.08 | 5.08 | 14.84 | 3.07 | 3.07 | 7.32 | 2.00 | 4.76 | 1.62 | 5.35 | 10.71 | 0.375" X 1.62" |
| | RLP | R0450X | 8.27 | 3.50 | 6.54 | 17.44 | 9.57 | 3.50 | 4.13 | 0.51 X 0.63 | 10.08 | 5.08 | 14.84 | 3.07 | 3.07 | 7.32 | 2.00 | 4.76 | 1.62 | 5.35 | 10.71 | 0.375" X 1.62" |
| | CPP | R0600P | 8.27 | 3.58 | 6.54 | 18.41 | 9.57 | 3.50 | 4.13 | 0.51 X 0.63 | 10.08 | 5.08 | 15.16 | 3.07 | 3.07 | 7.32 | 2.50 | 5.08 | 1.62 | 5.35 | 10.71 | 0.375" X 1.62" |
| | CPP | R0800X | 8.27 | 4.19 | 6.54 | 18.02 | 9.57 | 3.50 | 4.13 | 0.51 X 0.63 | 10.08 | 5.08 | 15.53 | 3.07 | 3.07 | 7.32 | 2.50 | 5.45 | 1.62 | 5.35 | 10.71 | 0.375" X 1.62" |
| | RLP | R0800X | 8.27 | 4.19 | 6.54 | 18.31 | 9.57 | 3.50 | 4.13 | 0.51 X 0.63 | 10.08 | 5.08 | 15.53 | 3.07 | 3.07 | 7.32 | 2.50 | 5.45 | 1.62 | 5.35 | 10.71 | 0.375" X 1.62" |
| | CPP | R1300X | 8.27 | 4.45 | 6.54 | 18.61 | 9.57 | 3.50 | 4.13 | 0.51 X 0.63 | 10.08 | 5.08 | 15.79 | 3.07 | 3.07 | 7.32 | 3.00 | 5.71 | 1.62 | 5.35 | 10.71 | 0.375" X 1.62" |
| | RLP | R1300X | 8.27 | 4.45 | 6.54 | 18.90 | 9.57 | 3.50 | 4.13 | 0.51 X 0.63 | 10.08 | 5.08 | 15.79 | 3.07 | 3.07 | 7.32 | 3.00 | 5.71 | 1.62 | 5.35 | 10.71 | 0.375" X 1.62" |
| 5 | CPP | R1800X | 8.50 | 3.03 | 10.08 | 22.28 | 12.36 | 3.74 | 7.24 | 0.51 X 0.77 | 14.06 | 6.09 | 18.27 | 4.12 | 2.78 | 9.36 | 3.00 | 4.21 | 2.00 | 6.63 | 13.27 | 0.5" X 2" |
| | CPP | R2200X | 8.50 | 3.03 | 10.08 | 22.44 | 12.36 | 3.74 | 7.24 | 0.51 X 0.77 | 14.06 | 6.09 | 18.50 | 4.12 | 2.78 | 9.36 | 4.00 | 4.45 | 2.00 | 6.63 | 13.27 | 0.5" X 2" |
| | CPP | R2600P | 8.50 | 3.03 | 10.08 | 23.19 | 12.36 | 3.74 | 7.24 | 0.51 X 0.77 | 14.06 | 6.09 | 19.53 | 4.12 | 2.78 | 9.36 | 4.00 | 5.47 | 2.00 | 6.63 | 13.27 | 0.5" X 2" |

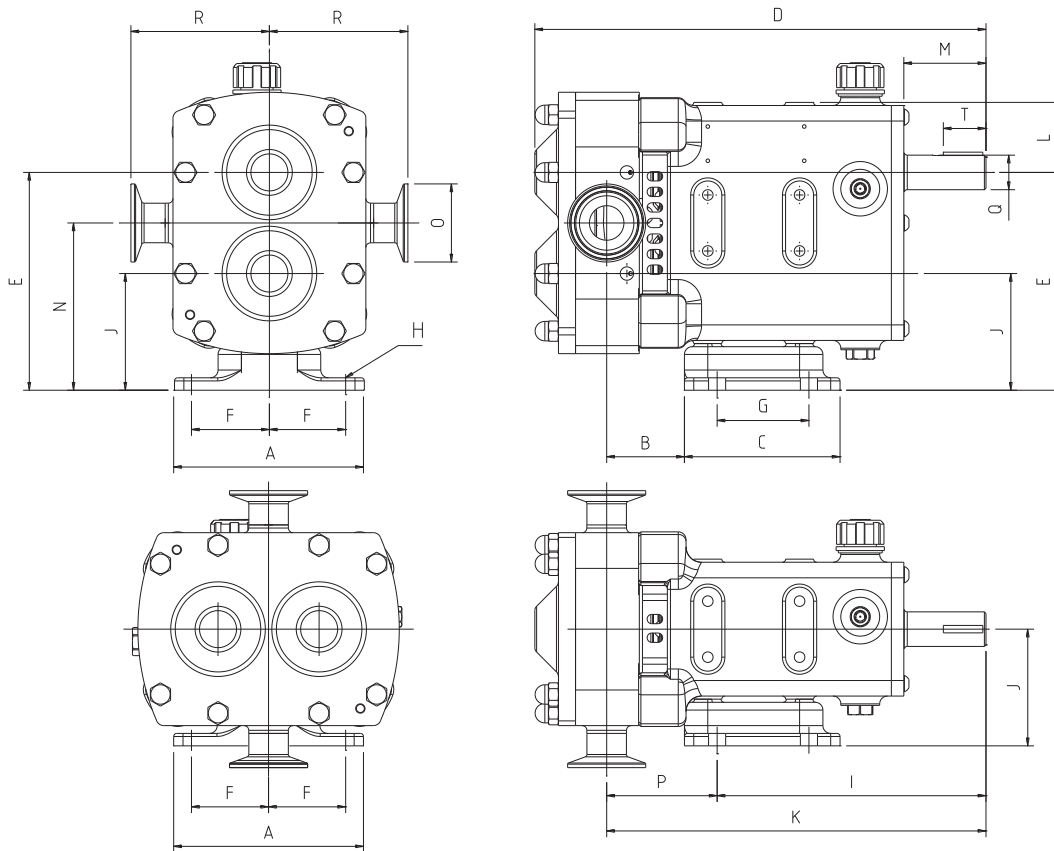
R1 applies to Tri-Clamp fittings only.

Dimensions given are for guidance only and should **not** be used for installation purposes. Certified dimensions will be supplied on request.

| | |
|---------|--------|
| Section | 1726 |
| Page | 1726.6 |
| Issue | A |

ROTARY LOBE PRODUCT LINE & CIRCUMFERENTIAL PISTON PRODUCT LINE: Revolution® Series Stainless Steel Pumps

DIMENSIONS – ALL MODELS – MILLIMETERS



| Size | Pump Type | Model | A | B | C | D | E | F | G | H | I | J | K | L | M | N | O | P | Q | R1 | S | T |
|------|-----------|--------|-----|-------|-----|-------|-----|----|-----|---------|-----|--------|-------|--------|------|--------|-------|-------|-------|-------|-----|------------|
| 2 | CPP | R0150X | 122 | 50 | 100 | 290 | 140 | 49 | 59 | 11 X 12 | 173 | 75 | 244 | 45 | 53 | 107.5 | 25/38 | 71 | 22.2 | 89 | 178 | 4.76X25.4 |
| | RLP | R0150X | 122 | 50 | 100 | 280.5 | 140 | 49 | 59 | 11 X 12 | 173 | 75 | 244 | 45 | 53 | 107.5 | 25 | 71 | 22.2 | 89 | 178 | 4.76X25.4 |
| | RLP | R0160L | 122 | 52 | 100 | 279.5 | 140 | 49 | 59 | 11 X 12 | 173 | 75 | 246 | 45 | 53 | 107.5 | 38 | 73 | 222 | 89 | 178 | 4.76X25.4 |
| | CPP | R0180P | 122 | 56 | 100 | 291 | 140 | 49 | 59 | 11 X 12 | 173 | 75 | 250 | 45 | 53 | 107.5 | 38 | 77 | 22.2 | 89 | 178 | 4.76X25.4 |
| | RLP | R0180L | 122 | 56 | 100 | 286 | 140 | 49 | 59 | 11x12 | 173 | 75 | 250 | 45 | 53 | 107.5 | 38 | 77 | 22.2 | 89 | 178 | 4.76X25.4 |
| 3 | CPP | R0200X | 146 | 70 | 104 | 346.5 | 174 | 59 | 65 | 11 X 14 | 202 | 90 | 291 | 57 | 68 | 132 | 38 | 89 | 31.75 | 108 | 216 | 6.35 X 45 |
| | RLP | R0200X | 146 | 70 | 104 | 337 | 174 | 59 | 65 | 11 X 14 | 202 | 90 | 291 | 57 | 68 | 132 | 38 | 89 | 31.75 | 108 | 216 | 6.35 X 45 |
| | CPP | R0300X | 146 | 73.5 | 104 | 346.5 | 174 | 59 | 65 | 11 X 14 | 202 | 90 | 294.5 | 57 | 68 | 132 | 38 | 92.5 | 31.75 | 108 | 216 | 6.35 X 45 |
| | RLP | R0300X | 146 | 73.5 | 104 | 347 | 174 | 59 | 65 | 11 X 14 | 202 | 90 | 294.5 | 57 | 68 | 132 | 38 | 92.5 | 31.75 | 108 | 216 | 6.35 X 45 |
| | CPP | R0400X | 146 | 80 | 104 | 356.5 | 174 | 59 | 65 | 11 X 14 | 202 | 90 | 301 | 57 | 68 | 132 | 50 | 99 | 31.75 | 108 | 216 | 6.35 X 45 |
| | RLP | R0400X | 146 | 80 | 104 | 357 | 174 | 59 | 65 | 11x14 | 202 | 90 | 301 | 57 | 68 | 132 | 50 | 99 | 31.75 | 108 | 216 | 6.35 X 45 |
| 4 | CPP | R0450X | 210 | 89 | 166 | 457.7 | 243 | 89 | 105 | 13x16 | 256 | 129 | 377 | 78 | 78 | 186 | 50 | 121 | 41.2 | 136 | 272 | 9.53x41.25 |
| | RLP | R0450X | 210 | 89 | 166 | 443 | 243 | 89 | 105 | 13x16 | 256 | 129 | 377 | 78 | 78 | 186 | 50 | 121 | 41.2 | 136 | 272 | 9.53x41.25 |
| | CPP | R0600P | 210 | 91 | 166 | 467.7 | 243 | 89 | 105 | 13x16 | 256 | 129 | 385 | 78 | 78 | 186 | 64 | 129 | 41.2 | 136 | 272 | 9.53x41.25 |
| | CPP | R0800X | 210 | 106.5 | 166 | 457.7 | 243 | 89 | 105 | 13x16 | 256 | 129 | 394.5 | 78 | 78 | 186 | 64 | 138.5 | 41.2 | 136 | 272 | 9.53x41.25 |
| | RLP | R0800X | 210 | 106.5 | 166 | 465 | 243 | 89 | 105 | 13x16 | 256 | 129 | 394.5 | 78 | 78 | 186 | 64 | 138.5 | 41.2 | 136 | 272 | 9.53x41.25 |
| | CPP | R1300X | 210 | 113 | 166 | 472.7 | 243 | 89 | 105 | 13x16 | 256 | 129 | 401 | 78 | 78 | 186 | 76 | 145 | 41.2 | 136 | 272 | 9.53x41.25 |
| | RLP | R1300X | 210 | 113 | 166 | 480 | 243 | 89 | 105 | 13x16 | 256 | 129 | 401 | 78 | 78 | 186 | 76 | 145 | 41.2 | 136 | 272 | 9.53x41.25 |
| 5 | CPP | R1800X | 216 | 77 | 256 | 566 | 314 | 95 | 184 | 13X19.5 | 357 | 154.75 | 464 | 104.75 | 70.5 | 237.75 | 76 | 107 | 50.8 | 168.5 | 337 | 12.7X50.8 |
| | CPP | R2200X | 216 | 77 | 256 | 570 | 314 | 95 | 184 | 13X19.5 | 357 | 154.75 | 470 | 104.75 | 70.5 | 237.75 | 101 | 113 | 50.8 | 168.5 | 337 | 12.7X50.8 |
| | CPP | R2600P | 216 | 77 | 256 | 589 | 314 | 95 | 184 | 13X19.5 | 357 | 154.75 | 496 | 104.75 | 70.5 | 237.75 | 101 | 139 | 50.8 | 168.5 | 337 | 12.7X50.8 |

R1 applies to Tri-Clamp fittings only.

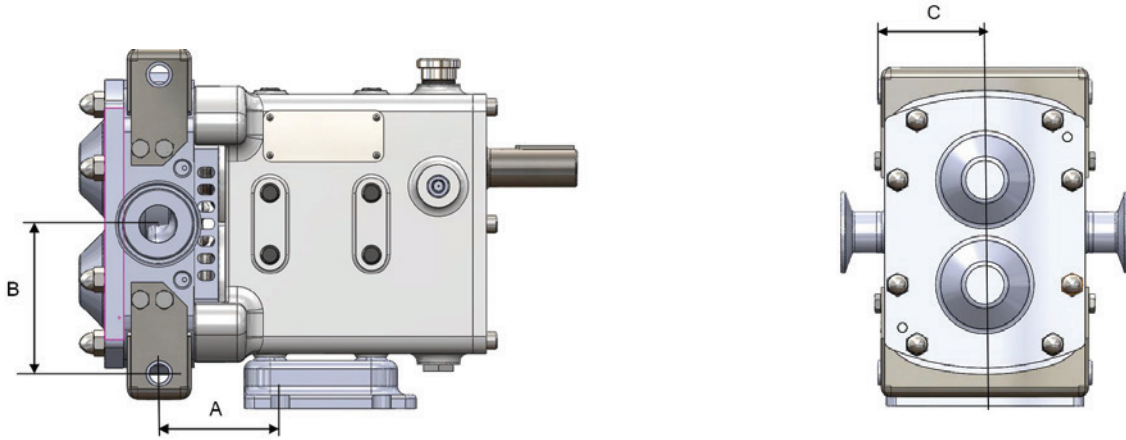
Dimensions given are for guidance only and should **not** be used for installation purposes. Certified dimensions will be supplied on request.

ROTARY LOBE PRODUCT LINE & CIRCUMFERENTIAL PISTON PRODUCT LINE:

Revolution® Series Stainless Steel Pumps

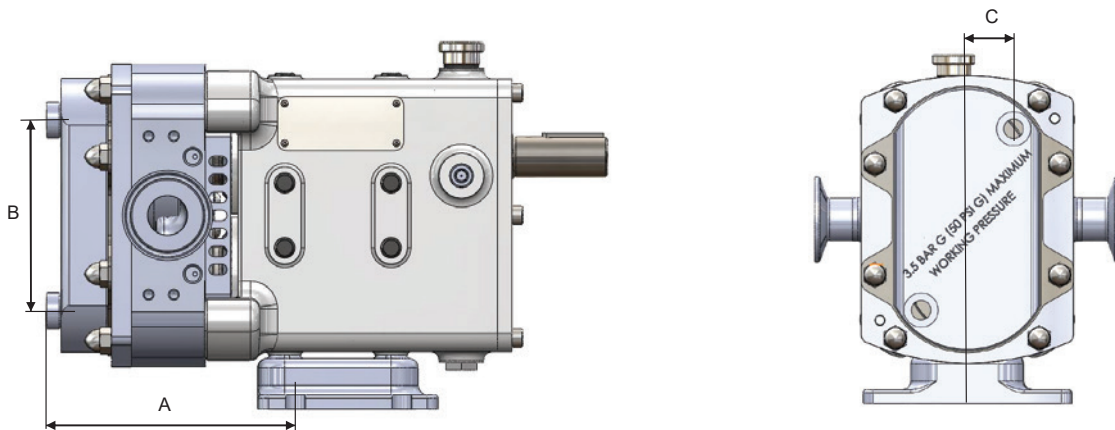
| | |
|---------|--------|
| Section | 1726 |
| Page | 1726.7 |
| Issue | A |

DIMENSIONS – ROTORCASE JACKET FOR HEATING/COOLING



| | | Size 2 | | | | Size 3 | | | Size 4 | | | | Size 5 | | | |
|------|------|----------|--------|--------|--------|----------|-------|-------|----------|-------|-------|-------|----------|-------|-------|--|
| | | R0150X | R0160L | R0180X | R0180L | R0200 | R0300 | R0400 | R0450 | R0600 | R0800 | R1300 | R1800 | R2200 | R2600 | |
| A | mm | 70.5 | 75 | 84 | 81.5 | 90.5 | 100.5 | 110.5 | 121 | 131 | 143 | 158 | 128.5 | 146.5 | 165.5 | |
| | Inch | 2.78 | 2.95 | 3.31 | 3.21 | 3.56 | 3.96 | 4.35 | 4.76 | 5.16 | 5.63 | 6.22 | 5.06 | 5.77 | 6.52 | |
| B | mm | 87 | | | | 114 | | | 159 | | | | 217 | | | |
| | Inch | 3.43 | | | | 4.49 | | | 6.26 | | | | 8.54 | | | |
| C | mm | 64.5 | | | | 81 | | | 109 | | | | 142 | | | |
| | Inch | 2.54 | | | | 3.19 | | | 4.29 | | | | 5.59 | | | |
| Size | | 1/4" bsp | | | | 1/4" bsp | | | 1/2" bsp | | | | 1/2" bsp | | | |

DIMENSIONS – FRONT COVER JACKET FOR HEATING/COOLING



| | | Size 2 | | | | Size 3 | | | Size 4 | | | | Size 5 | | | |
|------|------|----------|--------|--------|--------|----------|-------|-------|----------|-------|-------|-------|----------|-------|-------|--|
| | | R0150X | R0160L | R0180X | R0180L | R0200 | R0300 | R0400 | R0450 | R0600 | R0800 | R1300 | R1800 | R2200 | R2600 | |
| A | mm | 138 | 142.5 | 151.5 | 149 | 166.5 | 176.5 | 186.5 | 210 | 220 | 232 | 247 | 232 | 250 | 269 | |
| | Inch | 5.43 | 5.61 | 5.96 | 5.87 | 6.56 | 6.95 | 7.34 | 8.27 | 8.66 | 9.13 | 9.72 | 9.13 | 9.84 | 10.59 | |
| B | mm | 106 | | | | 132 | | | 180 | | | | 260 | | | |
| | Inch | 4.17 | | | | 5.2 | | | 7.09 | | | | 10.24 | | | |
| C | mm | 27 | | | | 35 | | | 52 | | | | 60 | | | |
| | Inch | 1.06 | | | | 1.38 | | | 2.05 | | | | 2.36 | | | |
| Size | | 1/4" bsp | | | | 1/4" bsp | | | 1/2" bsp | | | | 1/2" bsp | | | |

| | |
|---------|--------|
| Section | 1726 |
| Page | 1726.8 |
| Issue | A |

**ROTARY LOBE PRODUCT LINE &
CIRCUMFERENTIAL PISTON PRODUCT LINE:
Revolution® Series Stainless Steel Pumps**

NPSH REQUIRED

Printed performance curves are not available.

Performance curves can be electronically generated with the Viking Pump Curve Generator on vikingpump.com.

NPSHR data is available in the Viking Pump Hygienic Pump Selector Tool.
