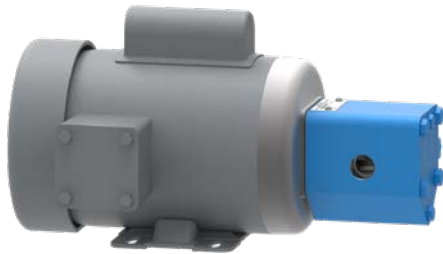


# LUBE OIL (MACHINERY LUBRICATION)

Machinery lubrication pumps are used in everything from small backup generators to naval ships. Lube oils, as the name implies, are the liquids used to lubricate rotating and reciprocating machinery. Lube oils may be handled at higher pressures to ensure their penetration of the equipment.



## SUGGESTED PUMPS:



### SG SERIES™

- Ductile Iron
- Pressures to 500 PSI
- Capacities to 190 GPM



### 4195 SERIES™

- Cast Iron
- Pressures up to 250 PSI
- Capacities to 580 GPM



### 75 SERIES™

- Cast Iron
- Compact installation
- Pressures up to 50 PSI
- Capacities to 30 GPM

## LUBE OIL APPLICATIONS:

- Dedicated lube oil filtration, cooling and/or dehydration for compressors, engines, turbines and gearboxes
- Portable filtration systems
- API 614 lubrication systems

## VIKING IN THE PROCESS:

Viking pumps are used to scavenge (draw lubricant oil from a sump) and pump the oil through filters, heat exchangers and/or dehydration systems in full-flow or kidney-loop processes to remove contaminants, reduce temperature and remove free water, then return and spray it on key friction points within the machine. This ensures maximum lubrication effectiveness and longest life for the lubricated equipment. Viking provides OEM lube pumps to many major manufacturers of refrigeration compressors, gas compressors, gas turbines, diesel engines and large gearboxes and transmissions. We also provide aftermarket pumps for many brands of equipment whose OEM pumps are problematic or are difficult to obtain replacements.

**INTERESTED IN A PRODUCT? CONTACT YOUR STOCKING DISTRIBUTOR TODAY!**

**VIKING PUMP®**



[vikingpump.com/contact](http://vikingpump.com/contact)

© 11/2022 Viking Pump, Inc. All rights reserved.