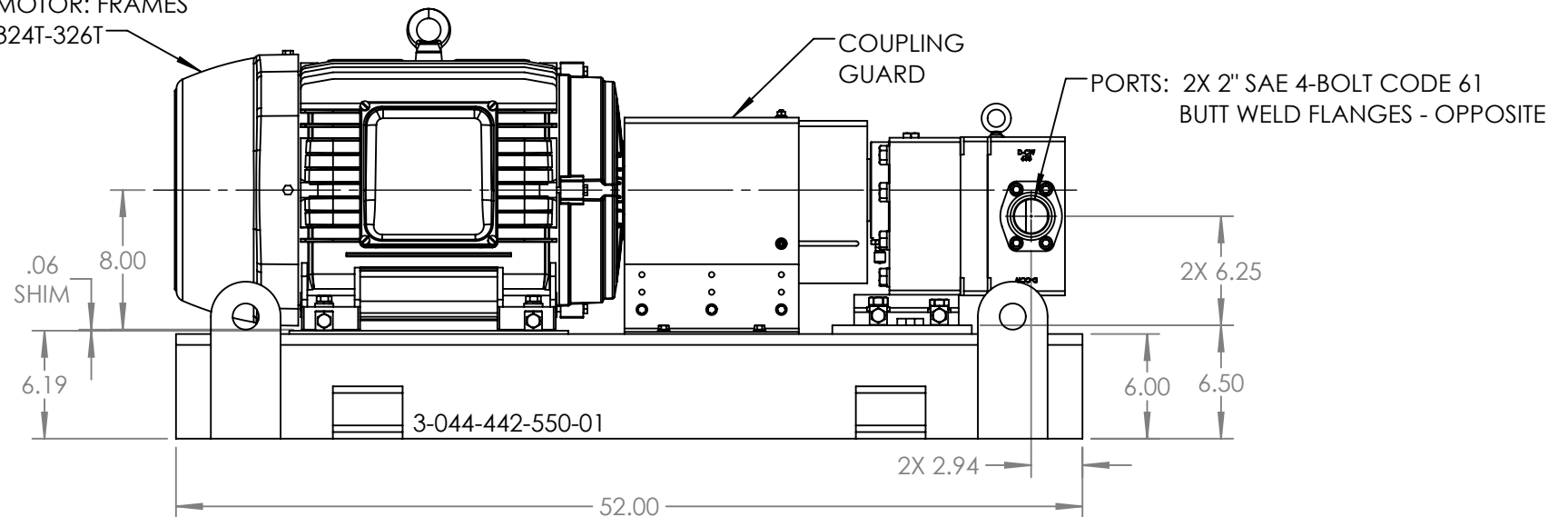


MOTOR: FRAMES
324T-326T



MODELS: GP-41415-G00-D, GP-41415-G10-D, GP-41415-N00-D, GP-41415-N10-D,
GP-41415-K00-D, GP-41415-K10-D, GB-41415-K00-D, GB-41415-K10-D,
GB-41415-N00-D, GB-41415-N10-D, GB-41415-R00-D, GB-41415-R10-D

NOTES:

1. COUPLING GUARD NOT SHOWN IN TOP VIEW.
2. ALL DIMENSIONS ARE FOR REFERENCE ONLY.

| | | |
|---------|----------|------------|
| STATE | Released | 08/03/2020 |
| DRAWN | DLende | 11/28/2017 |
| CHECKED | GDJ | 07/30/2020 |

DIMENSIONS ARE IN
INCHES
PROJECT: E251
WAS:



VIKING PUMP, INC.
A Unit of IDEX Corporation
Cedar Falls, IA 50613
U.S.A.

THIS DRAWING IS THE PROPERTY OF
VIKING PUMP, INC. AND IS PROPRIETARY
IN GENERAL AND DETAIL. IT SHALL NOT BE
COPIED OR ITS CONTENTS REVEALED TO
OUTSIDE PARTIES WITHOUT THE WRITTEN
CONSENT OF VIKING PUMP, INC.

3D

DWG. NO. SHEET 1 OF 1
GPV-1415-034-U

REV. E.0
08/03/2020



No.:

Date: 08-DEC-2014

Customer :

TECHNICAL PROPOSAL

Three-phase induction motor - Squirrel cage rotor

Product line : W22 NEMA Premium - Ball Bearings

Catalog Number : 05018ET3E326T-W22

List Price : \$5,100

Notes:

Performed by:

Checked:



No.:

Date: 08-DEC-2014

DATA SHEET

Three-phase induction motor - Squirrel cage rotor

Customer :
Product line : W22 NEMA Premium - Ball Bearings

Frame : 324/6T
Output : 50 HP
Frequency : 60 Hz
Poles : 4
Full load speed : 1775
Slip : 1.39 %
Voltage : 208-230/460 V
Rated current : 131-118/59.2 A
Locked rotor current : 734/367 A
Locked rotor current (I_L/I_n) : 6.2
No-load current : 50.0/25.0 A
Full load torque : 146 lb.ft
Locked rotor torque : 230 %
Breakdown torque : 270 %
Design : B
Insulation class : F
Temperature rise : 80 K
Locked rotor time : 15 s (hot)
Service factor : 1.25
Duty cycle : S1
Ambient temperature : -20°C - +40°C
Altitude : 1000
Degree of Protection : IP55
Approximate weight : 536 lb
Moment of inertia : 9.1624 sq.ft.lb
Noise level : 66 dB(A)

| | D.E. | N.D.E. | Load | Power factor | Efficiency (%) |
|---------------------|---------|---------|------|--------------|----------------|
| Bearings | 6312 C3 | 6212 C3 | 100% | 0.83 | 94.5 |
| Regreasing interval | 20000 h | 20000 h | 75% | 0.77 | 94.1 |
| Grease amount | 21 g | 13 g | 50% | 0.66 | 93.0 |

Notes:

Performed by

Checked

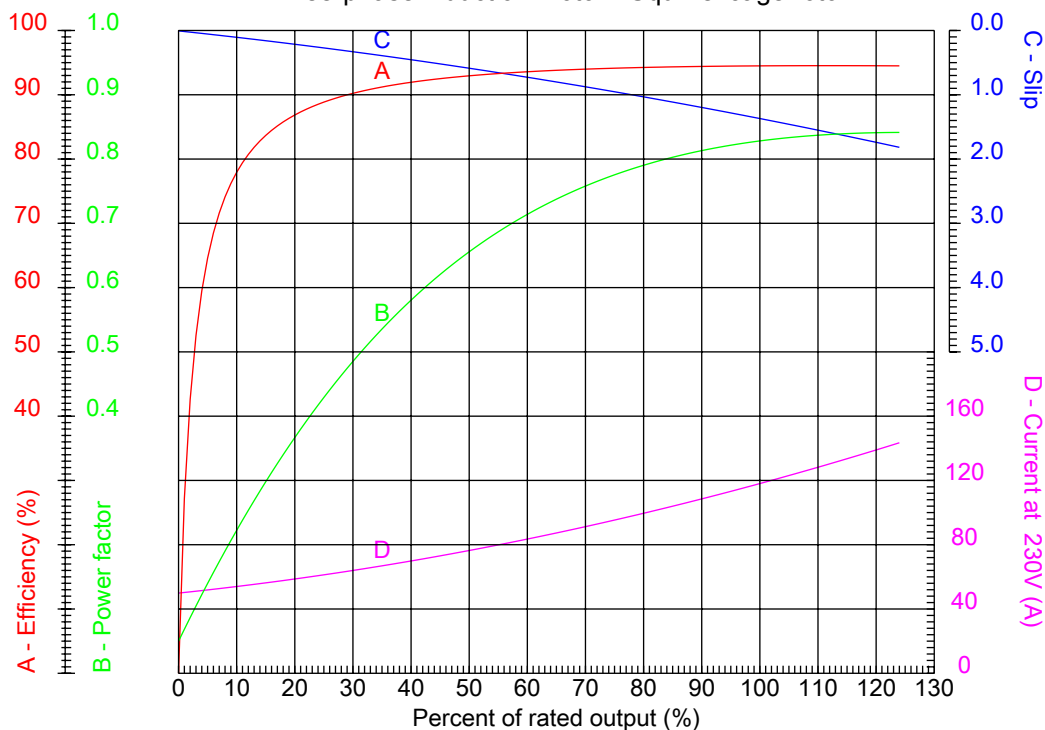


No.:

Date: 08-DEC-2014

PERFORMANCE CURVES RELATED TO RATED OUTPUT

Three-phase induction motor - Squirrel cage rotor



Customer :
Product line : W22 NEMA Premium - Ball Bearings

| | | | |
|------------------|------------------|--|---------|
| Frame | : 324/6T | Locked rotor current (I _l /I _n) | : 6.2 |
| Output | : 50 HP | Duty cycle | : S1 |
| Frequency | : 60 Hz | Service factor | : 1.25 |
| Full load speed | : 1775 | Design | : B |
| Voltage | : 208-230/460 V | Locked rotor torque | : 230 % |
| Rated current | : 131-118/59.2 A | Breakdown torque | : 270 % |
| Insulation class | : F | | |

Notes:

Performed by

Checked

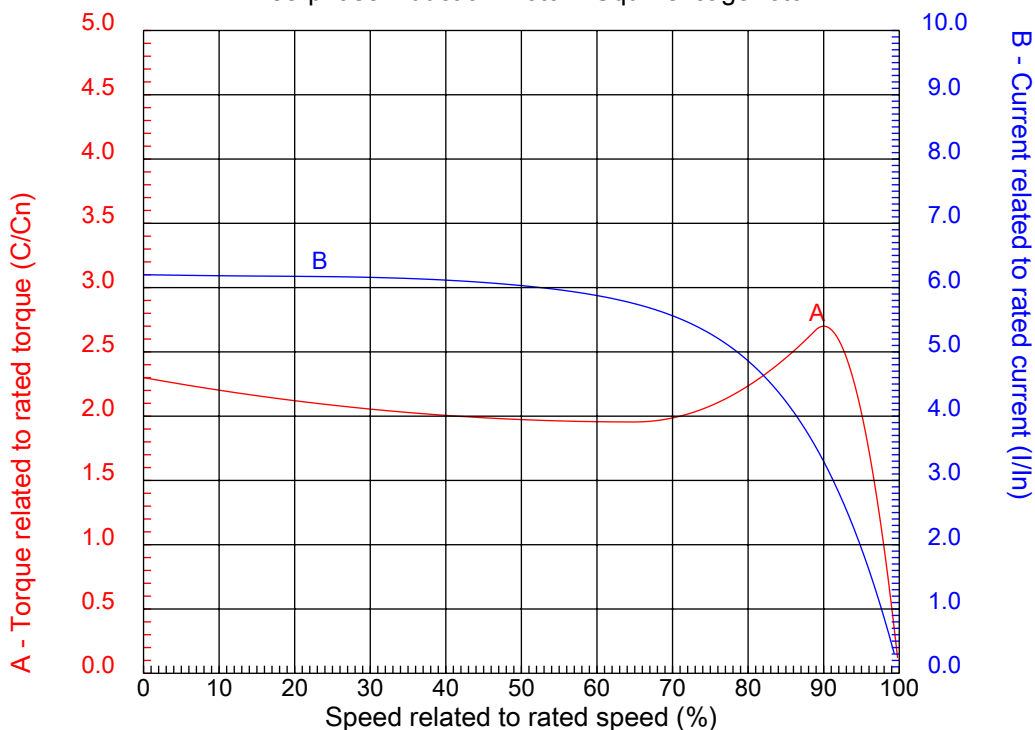


No.:

Date: 08-DEC-2014

CHARACTERISTIC CURVES RELATED TO SPEED

Three-phase induction motor - Squirrel cage rotor



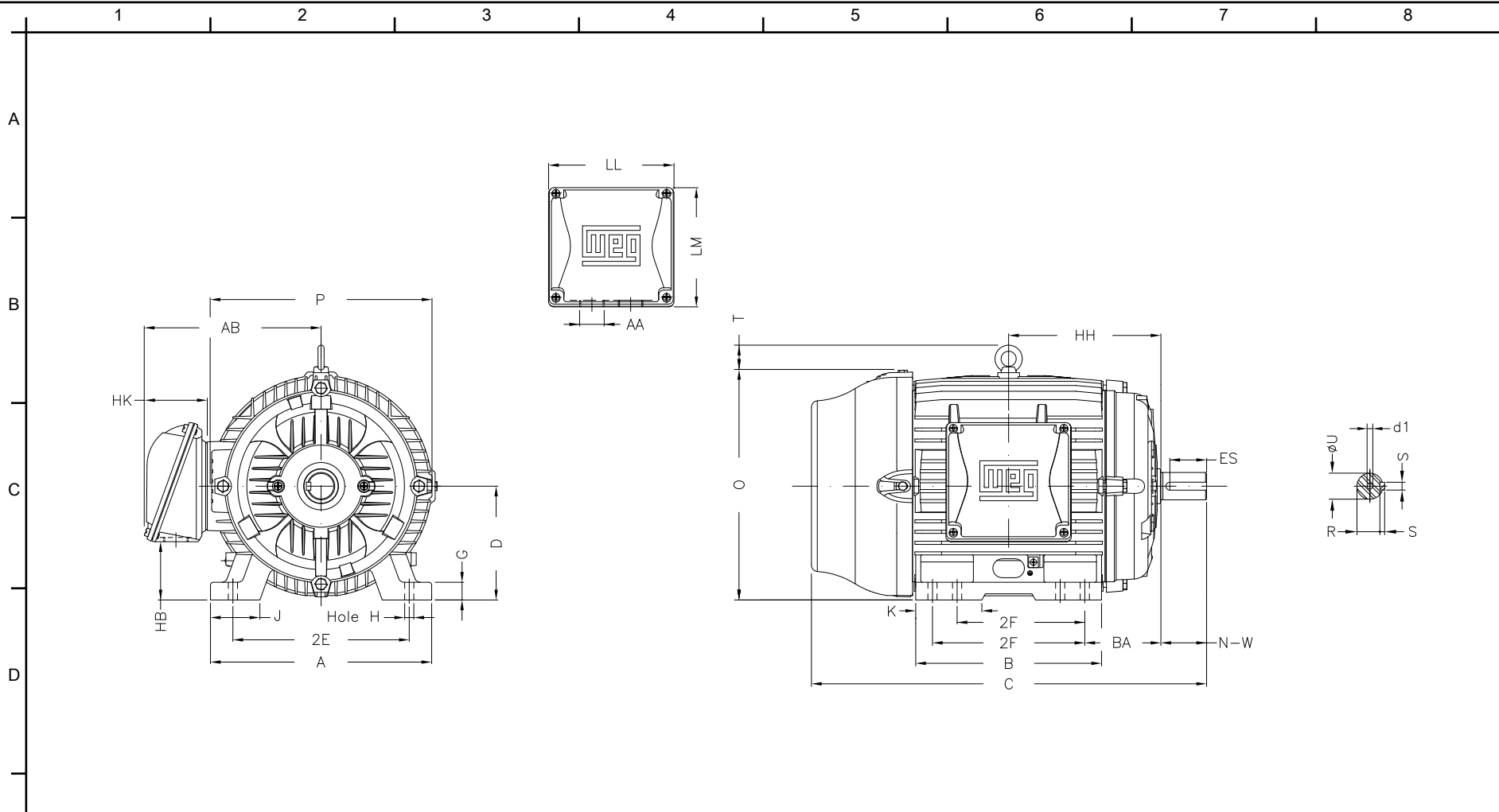
Customer :
Product line : W22 NEMA Premium - Ball Bearings

| | | | |
|------------------|------------------|--|---------|
| Frame | : 324/6T | Locked rotor current (I _l /I _n) | : 6.2 |
| Output | : 50 HP | Duty cycle | : S1 |
| Frequency | : 60 Hz | Service factor | : 1.25 |
| Full load speed | : 1775 | Design | : B |
| Voltage | : 208-230/460 V | Locked rotor torque | : 230 % |
| Rated current | : 131-118/59.2 A | Breakdown torque | : 270 % |
| Insulation class | : F | | |

Notes:

Performed by

Checked



Notes:

| | | | | |
|---------------------|--------------|--------------|-------------|--------------|
| 2E 12.500 | J 3.189 | A 15.157 | P 15.827 | AB 12.575 |
| 2F 10.500/12.000 | K 3.189 | B 14.567 | BA 5.250 | FBA 8.738 |
| U 2.125 | N-W 5.250 | ES 3.937 | S 0.500 | R 1.844 |
| depth 0.500 | D 8.000 | G 1.300 | HB 4.811 | O 15.953 |
| T 2.441 | HF 8.708 | HH 11.250 | HK 4.705 | H 0.657 |
| C 31.116 | FC 35.860 | LL 9.055 | LM 8.661 | AA NPT 2" |
| d1 A 4 | | | | |

Performed by:


Checked:

Customer:

W22 NEMA Premium - Ball Bearings

Three-phase induction motor
Frame 324/6T - IP55

08-DEC-2014



1 2 3 4 5 6 7 8

A
B
C
D
E
F

LOW VOLTAGE

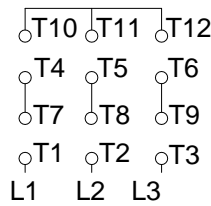
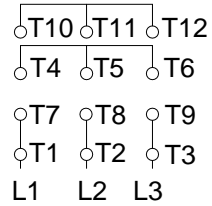
HIGH VOLTAGE



CONNECTIONS FOR STARTING ONLY:

LOW VOLTAGE

HIGH VOLTAGE



Notes:

Performed by:

Checked:

Customer:

W22 NEMA Premium - Ball Bearings

Three-phase induction motor
Frame 324/6T - IP55

08-DEC-2014

