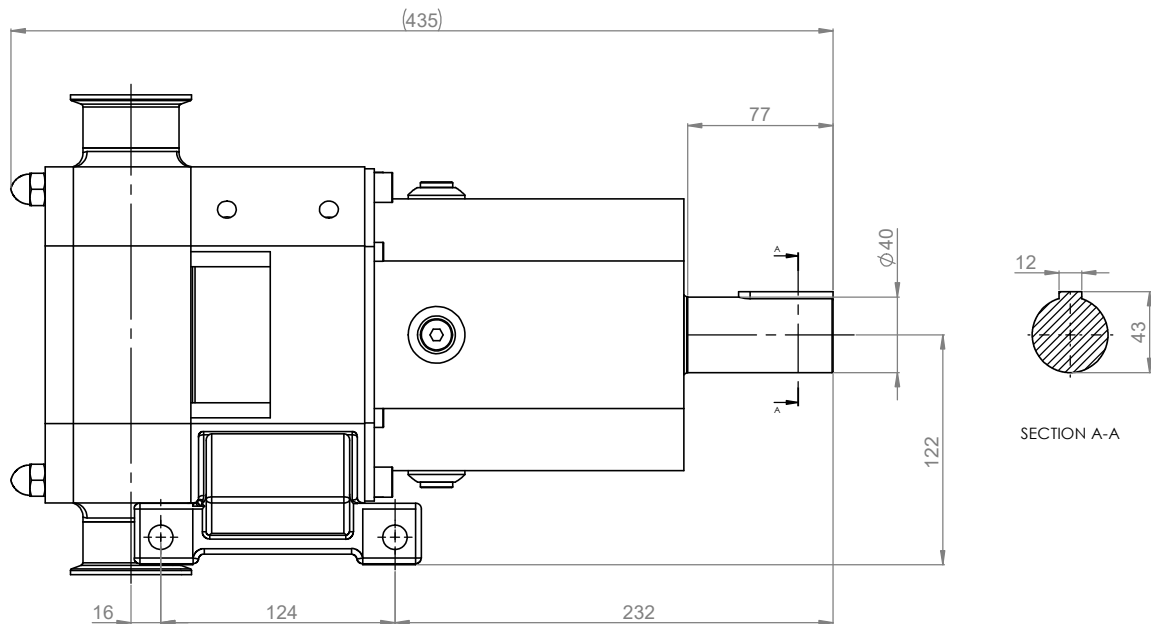
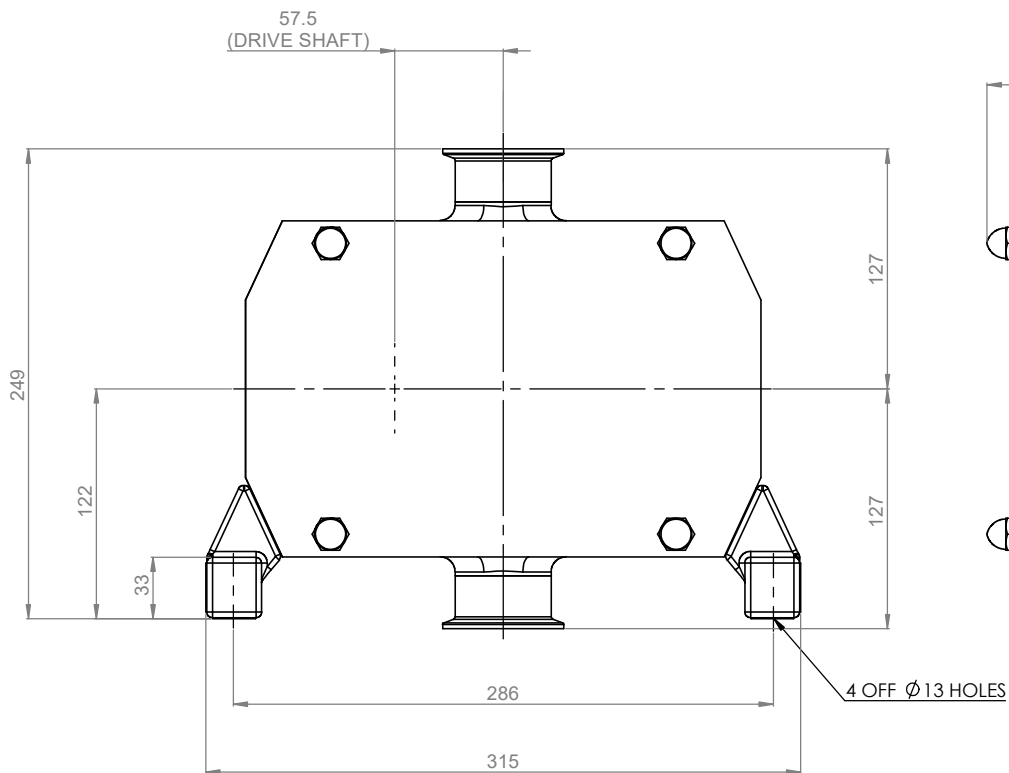
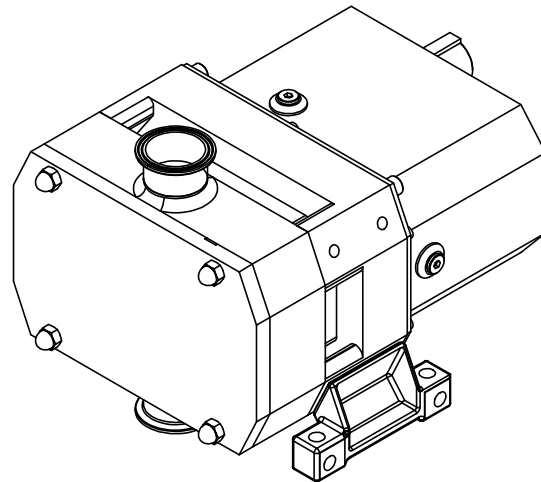


**GENERAL ARRANGEMENT DETAILS**

**PUMP INFORMATION**

PUMP MODEL	STERILOBE SLD5/0528/10
LEFT/TOP CONNECTION	2" TRI-CLAMP
RIGHT/BOTTOM CONNECTION	2" TRI-CLAMP
DRIVE SHAFT POSITION	LEFT HAND DRIVE
FRONT COVER ADDITIONS	STANDARD
ROTORCASE ADDITIONS	STANDARD
GEARBOX ADDITIONS	STANDARD
PUMP ADDITIONS	STANDARD

THIS IS NOT A CERTIFIED DRAWING. USE FOR GENERAL INSTALLATION ONLY



UPDATED TO CURRENT STANDARD		B	29/04/2022
AMENDMENT		ISSUE	DATE

<p>VIKING PUMP HYGIENIC</p> <p>HIGHFIELD INDUSTRIAL ESTATE, EAST SUSSEX, BN23 6PT TEL: (+44) 1323 508211</p>	<p><b>COPYRIGHT:</b> THIS DRAWING IS THE SOLE PROPERTY OF <b>VIKING PUMP HYGIENIC LTD.</b> IT MUST NOT BE COPIED OR USED IN PART OR FULL, WITHOUT PRIOR WRITTEN CONSENT.</p>	<p>UNLESS OTHERWISE STATED: ALL DIMENSIONS ± 2.50 ANGLES ± 2.0° DO NOT SCALE THIS DRAWING REMOVE BURRS AND SHARP EDGES DIMENSIONS IN MILLIMETRES <b>IF IN DOUBT ASK</b></p>	PROJECTION	DRAWN	CHECKED	TITLE
				IP/JB	DSB	GENERAL ARRANGEMENT  <b>SLDL-TC-LEFT</b>