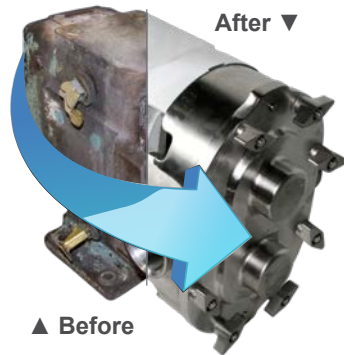




REMANUFACTURING: TRA®10 SERIES & TRA®20 SERIES

SIGNIFICANT SAVINGS COMPARED TO PURCHASING NEW



WHY REMANUFACTURE?

- Worn pump is returned to **like-new** condition & performance
- Your remanufactured pump carries a full 1 year **factory warranty**
- All remanufactured pumps are **factory tested**
- Save big** compared to purchasing an entirely new pump
- Pumps can be remanufactured up to **four times**, depending on model & wear



THE PROCESS:

- Pump is disassembled & evaluated
- Pump body & cover are machined to a hygienic surface - restoring tolerances & regaining flow level
- Pump body & cover are polished
- Gearcase is sandblasted & recoated
- All internal gearbox parts are replaced, including shafts, bearings, gears & seal components
- New rotors are installed, matching the oversize dimension of the machined body
- Pump is tested for performance

WHAT YOU GET:

- NEW** Rotors
- NEW** Bearings
- NEW** Seal Components
- NEW** Shafts
- NEW** Gears



ADVANTAGES:

- Economical alternative to buying a new replacement pump
- One-piece stainless steel or 17-4 PH steel shafts
- Stainless steel bearing retainers
- Competitive deliveries
- Helical timing gears
- Pump can be remanufactured up to four times, depending on model and wear
- Serial number allows traceability of rotor dimension oversize
- All pumps tested and certified before leaving the facility
- Full 1 year factory warranty

Viking Pump offers remanufacturing services for Viking Pump TRA®10 & TRA®20 Series pumps, as well as upgrading Waukesha® Universal 1 & 2 Series pumps and Ampco® ZP1 & ZP2 series.

Waukesha® and Universal 1 & 2 are the registered trademarks of SPX. Ampco® and ZP1 & ZP2 Series are the registered trademarks of Ampco Pumps Company.