

CREAMS

Creams are typically for personal use by consumers for cosmetic and surface medical treatments. Physical properties and chemistry can vary greatly depending on the cream base and added substituents. Some creams will be petroleum based like Petroleum Grease, while others may be emulsions suspended in water. They typically are shear-thinning mixtures.



SUGGESTED PUMPS:



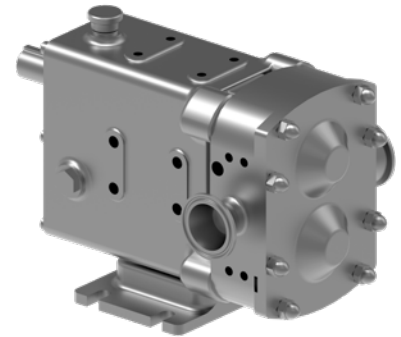
4127C SERIES™

- 316 Stainless Steel
- Cartridge Lipseal Options
- Low Shear
- Capacities to 320 GPM



1127C SERIES™

- 316 Stainless Steel
- O-Pro® Guard Seal
- Low Shear
- Capacities to 320 GPM



REVOLUTION® SERIES

- 316 Stainless Steel Sanitary Design
- Innovative front loading Seal
- Low shear
- Capacities to 761 GPM

MARKET APPLICATIONS:

- Tanker truck unloading
- Product transfer
- Ingredient dosing
- Finished Product transfer

VIKING IN THE PROCESS:

Stainless Steel pumps play a key role in the manufacturing of creams. Beginning with the transfer of raw materials from tanker trucks to storage tanks, day tanks, ingredient dosing and finished product transfer to filling machines, Viking Pump has the solution for your application requirements.

Note: O-Pro® seals are patented.

INTERESTED IN A PRODUCT? CONTACT YOUR STOCKING DISTRIBUTOR TODAY!

VIKING PUMP®



vikingpump.com/contact

© 06/2024 Viking Pump, Inc. All rights reserved.