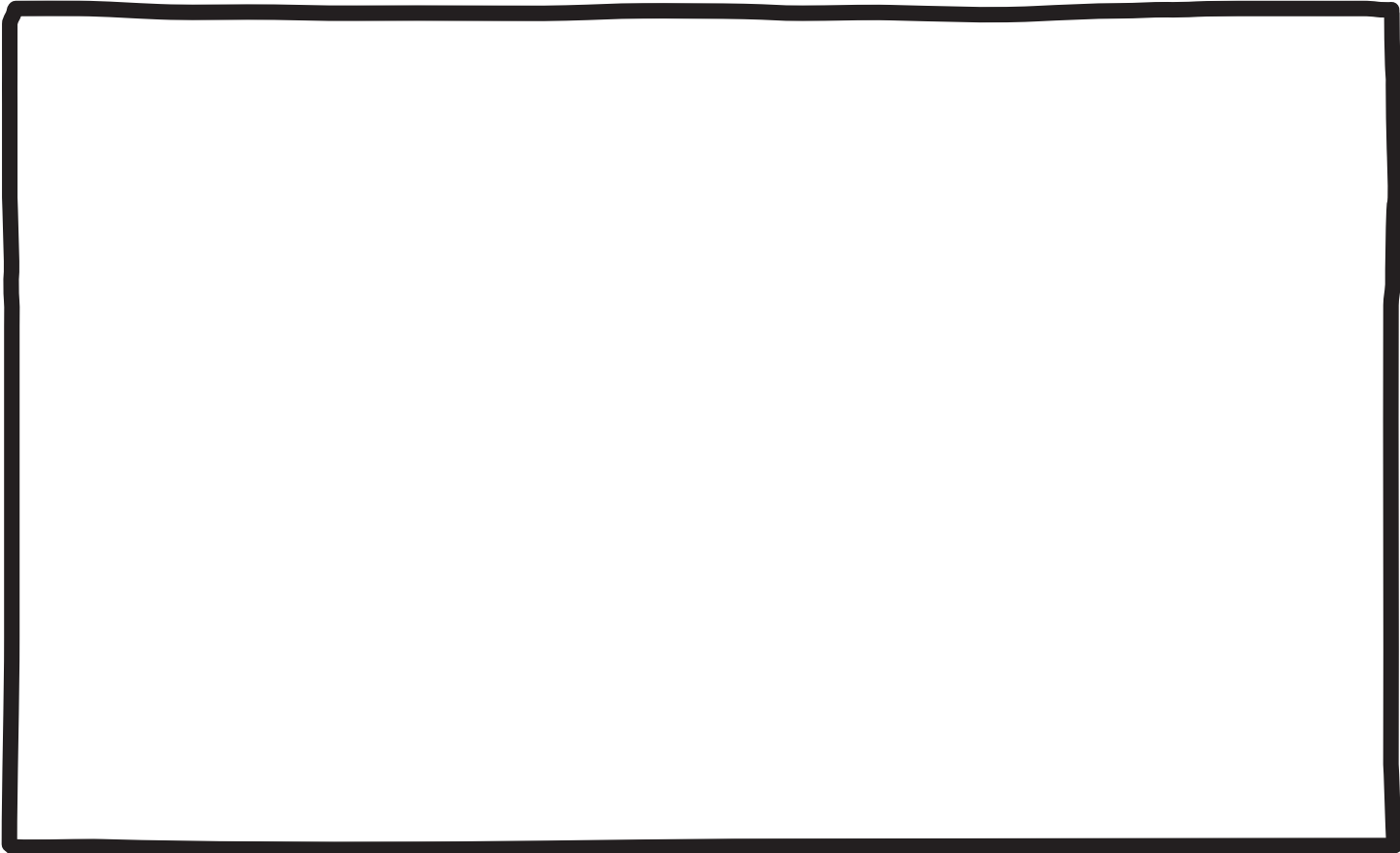
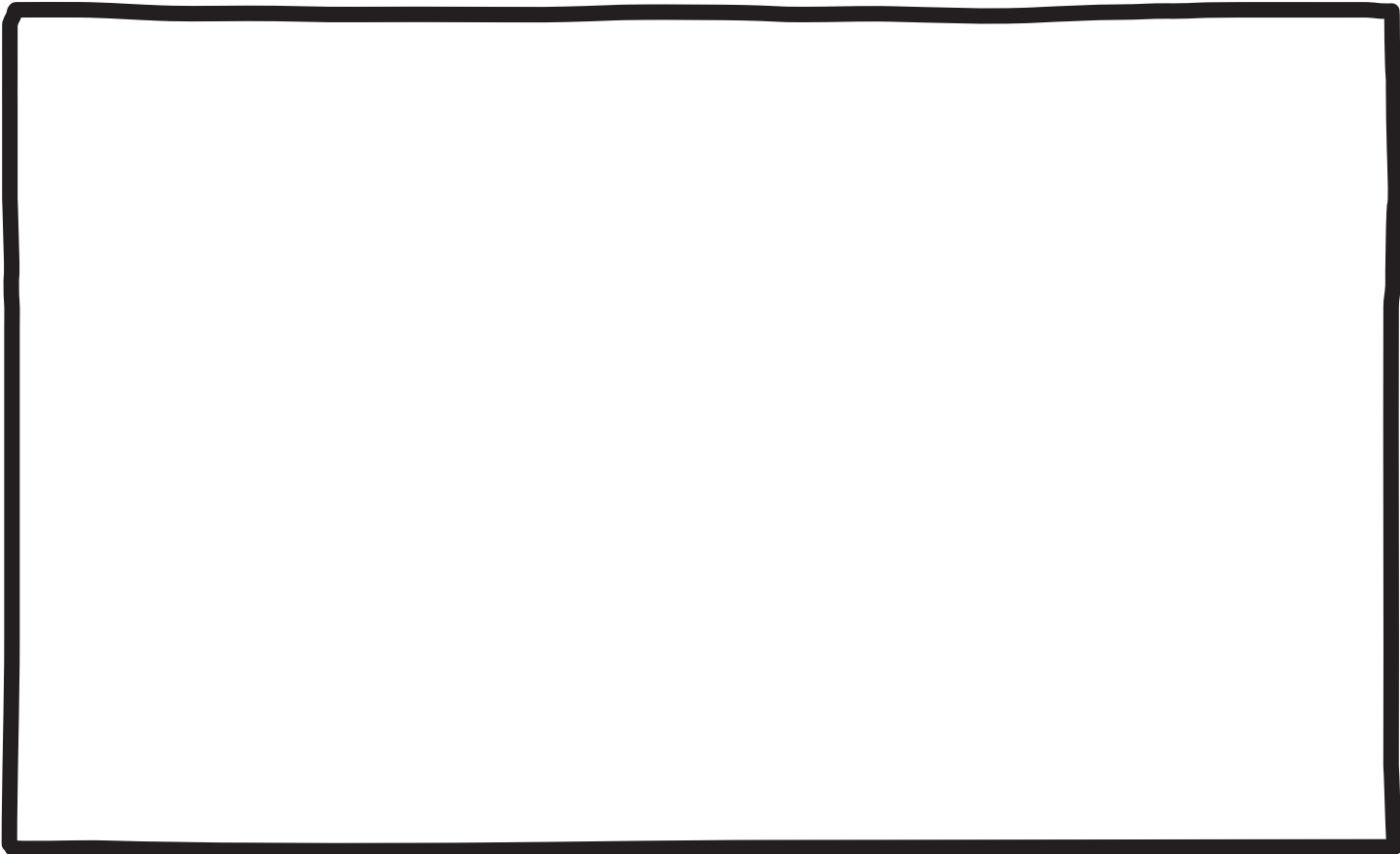
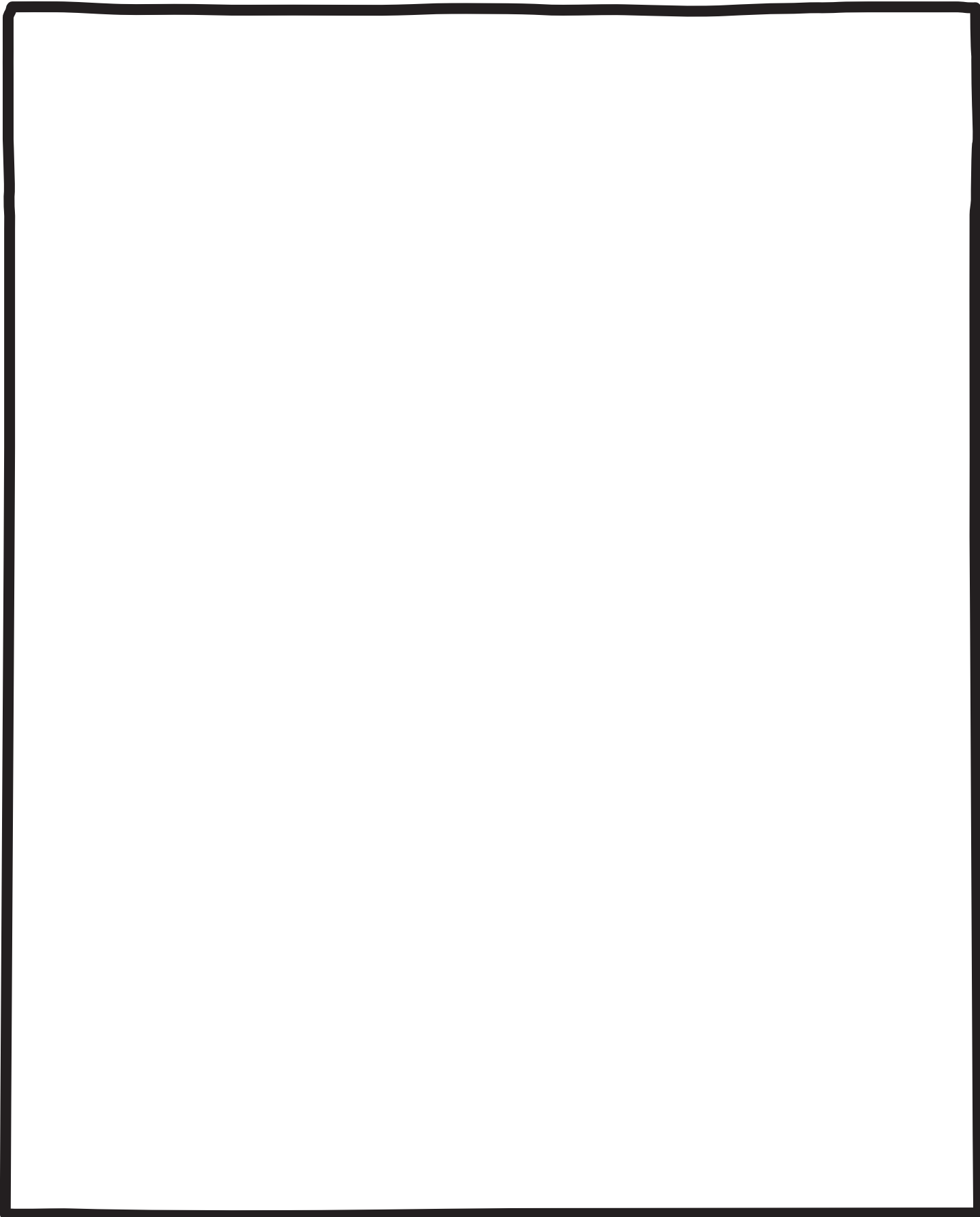
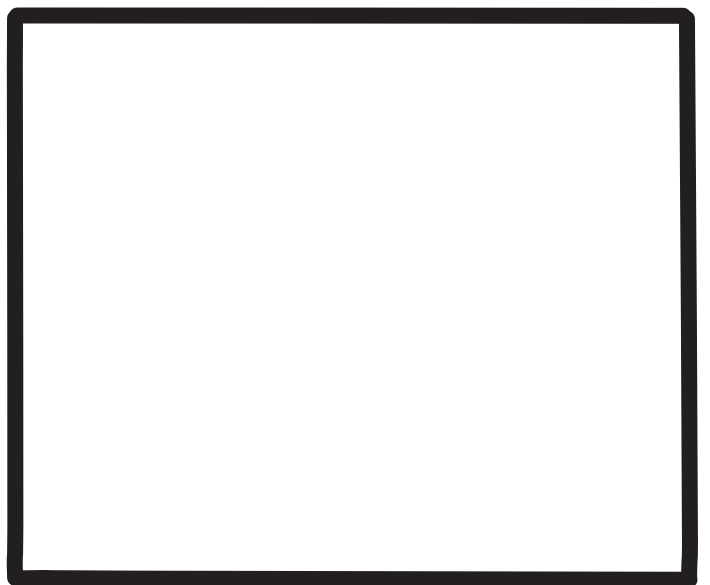
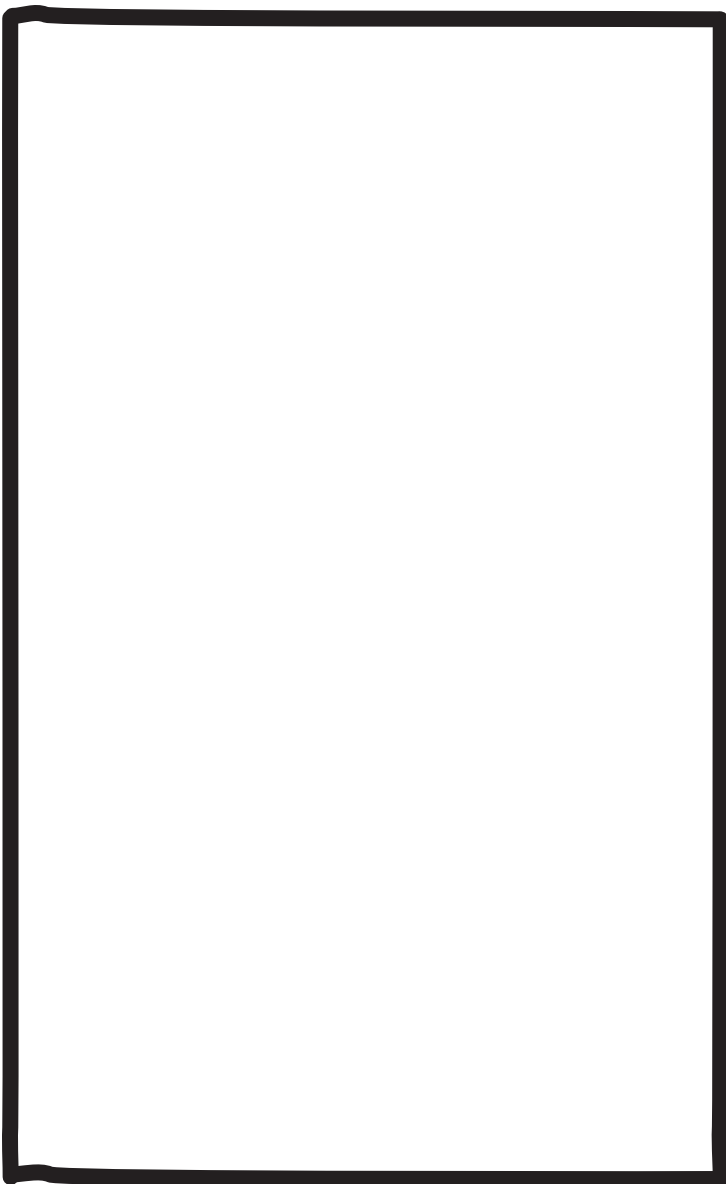


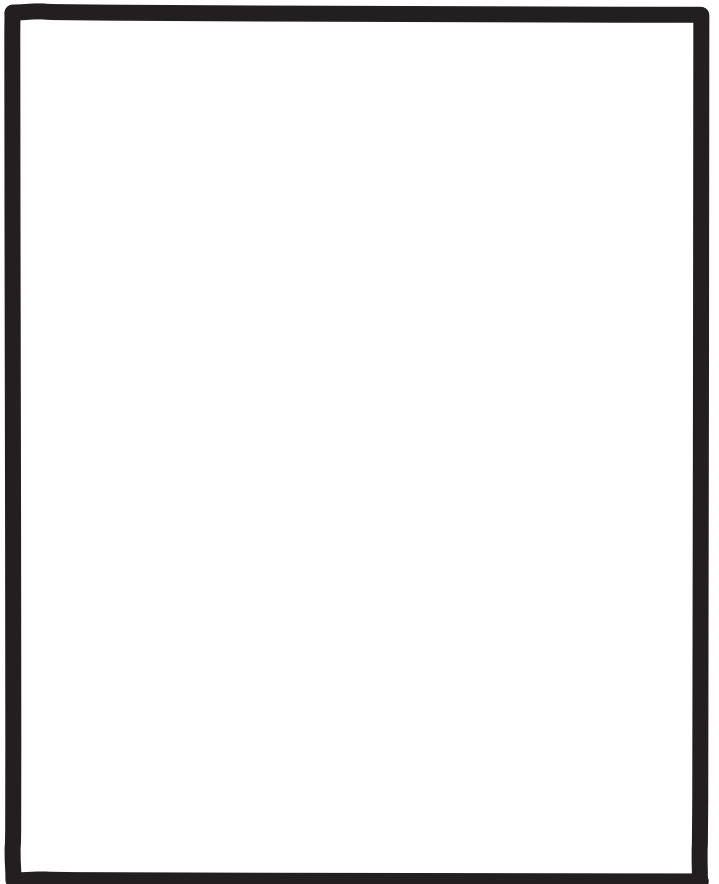
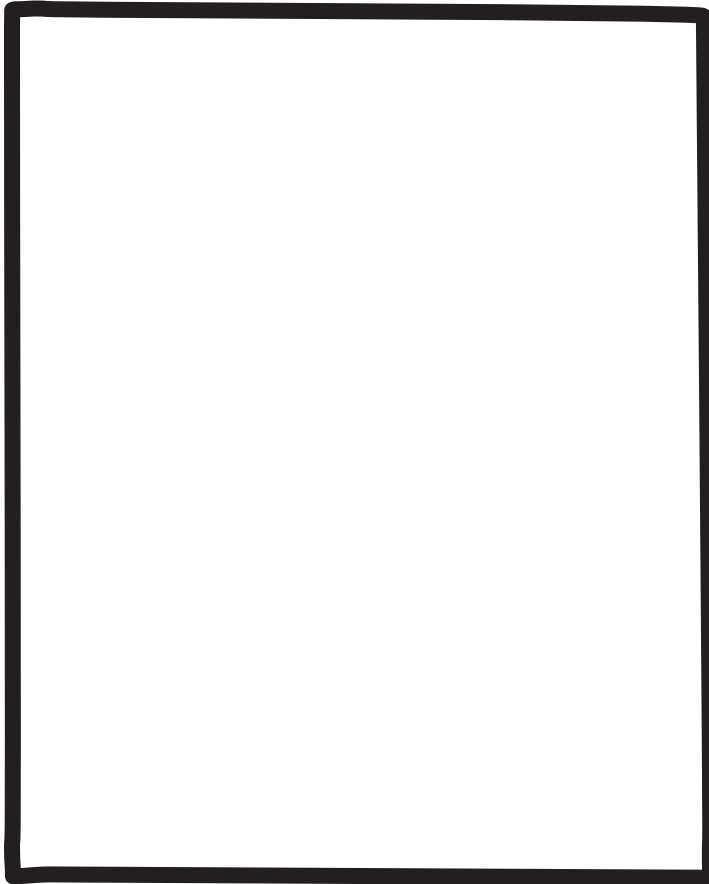
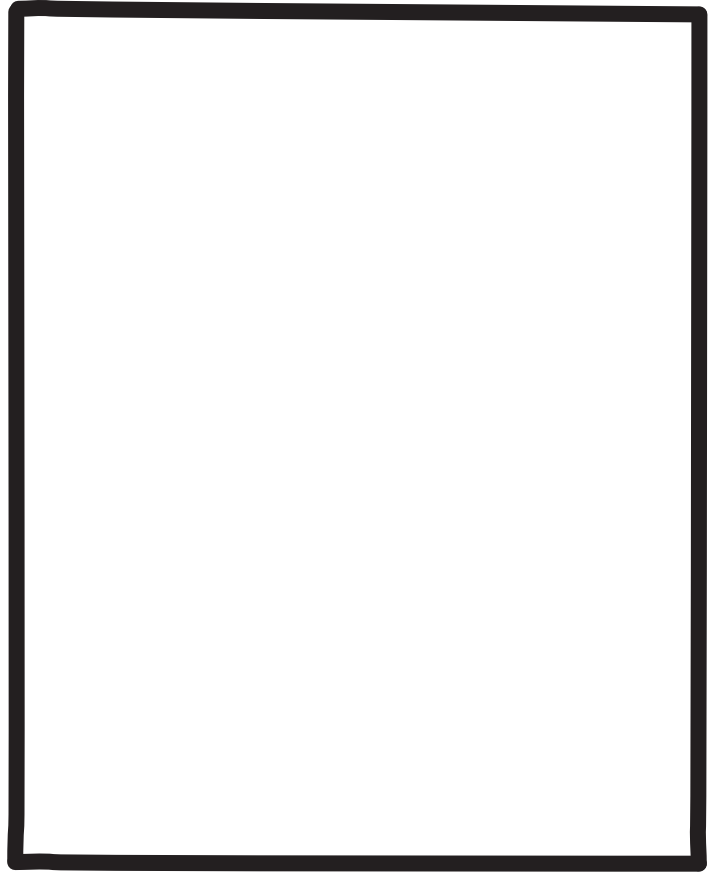
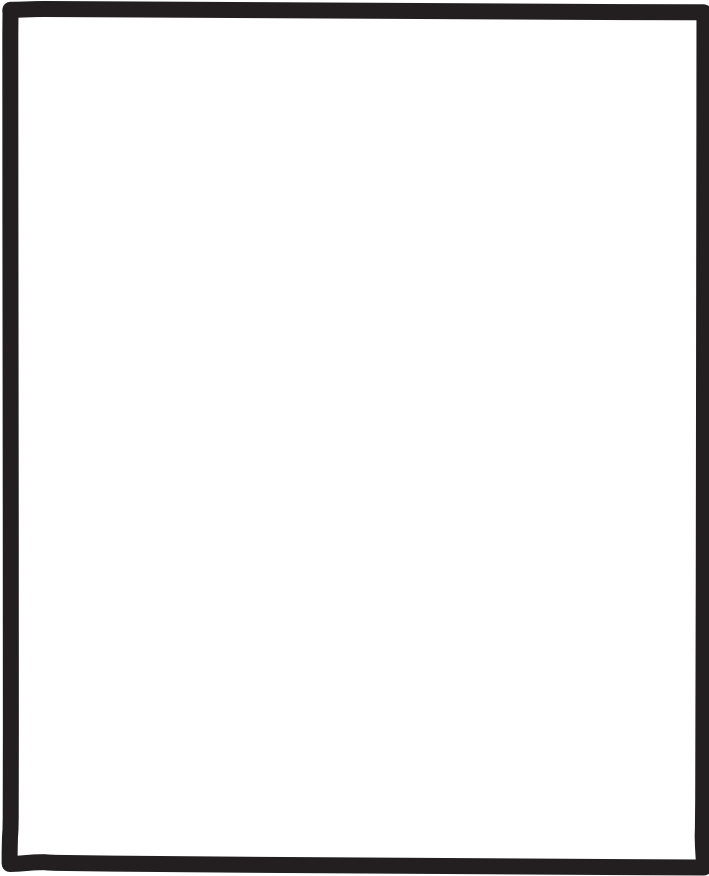
# WRITE A GRAPHIC NOVEL

The page features a large, hand-drawn style rectangular frame. The top section is a single large rectangle. The bottom section is divided into two smaller, side-by-side rectangles. All sections are empty, intended for a student to draw a scene from a story.









CUT OUT THESE SPEECH BUBBLES AND USE IN YOUR STORY!

