

Flyer

# Intelligent Analytics



# Real-time data from ItemPath

ItemPath integrates with your existing Kardex Remstar ASRS solution to provide an intelligent, analytical view of your operations – anywhere, anytime. Keep tabs on your operations with real-time information at your fingertips.

## Get access when and where you need it.

Using an internal web server, you can access ItemPath dashboard to keep tabs on storage, anywhere you've allowed. And with export features, take a closer look at things in a spreadsheet or table. Or, build your own connection using the well-documented API, so you can have customization over your storage solution.

## Built with safety in mind

ItemPath uses docker containers to isolate our internal server from your network. If you have a container cloud already, we can integrate there as well.

- Pulls from docker registry
- Signed code to prevent changes
- Data via MSSQL standard connection
- Isolated codebase and hardware

## Industry standard security

All traffic is routed through an internal web server and through an authenticated API, so there is no chance of data being accessed without permission.

- Ubuntu/Nginx web server
- No file access to your network
- User login and history
- No internet connection needed

Access  
real-time  
data  
**anytime**

Industry  
Standard  
**Security**

**Standard  
& Custom  
Reporting**

# Supercharge Power Pick

**ItemPath gives you the data you need to make smart operational business decisions.**

## Customize your reports

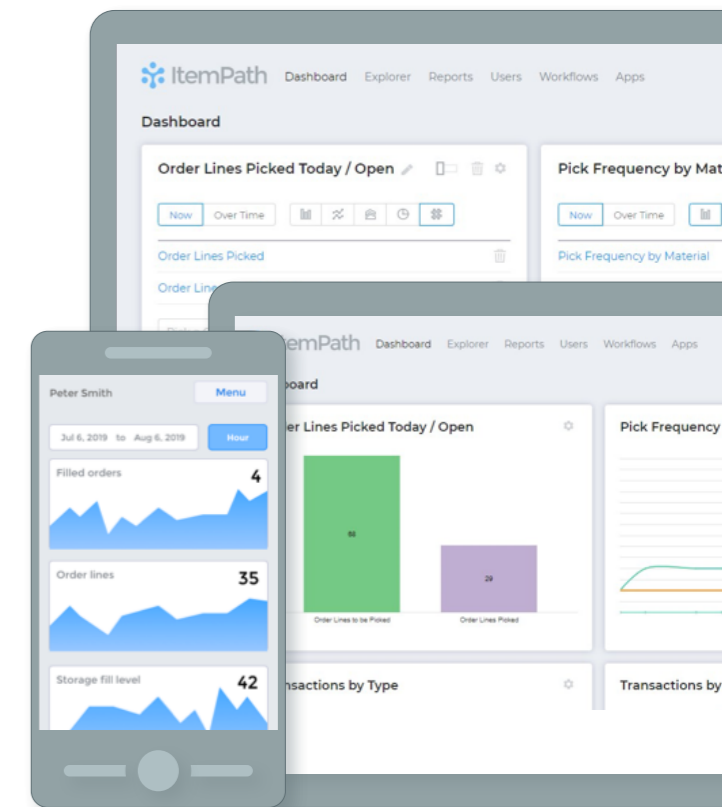
Adjust time ranges, add thresholds and export data in a variety of different formats. With a growing report list you can also compare different metrics.

## Connect to other systems

In addition to a simple interface, ItemPath offers a fully featured API to your Kardex Power Pick System installation, so you can build to your specifications.

## Keep your data secure

Authentication and user management allow you to keep tabs on your data. With audit history, see who is accessing reports and why.



Easy setup



Data security

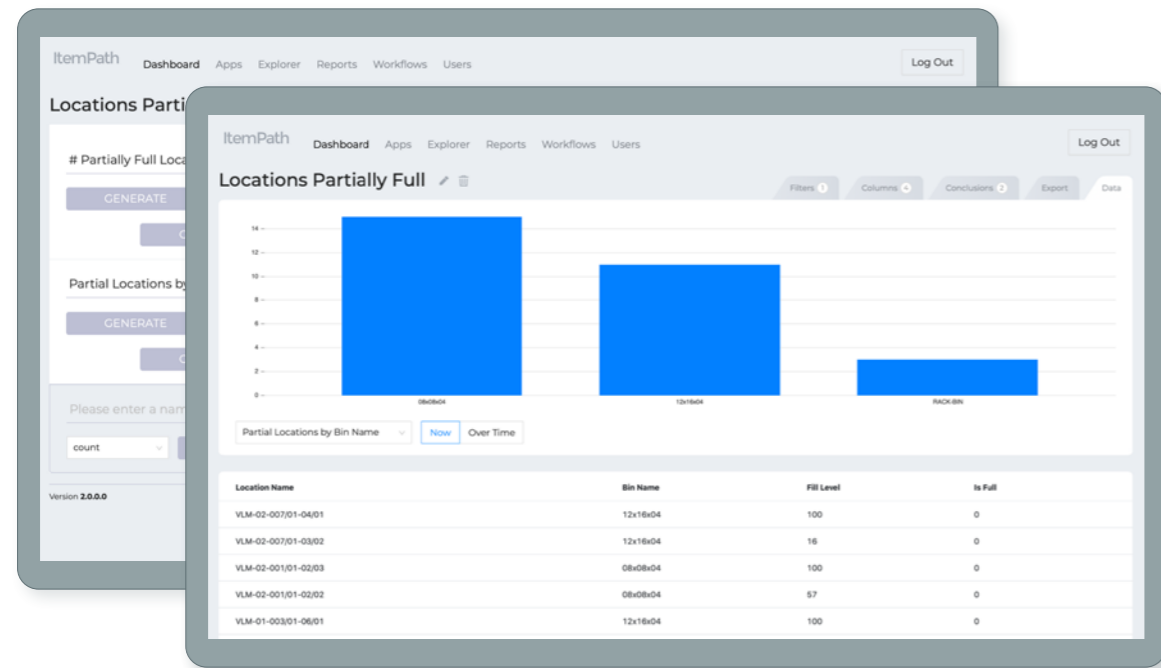


API available



Multiple users

# Custom reporting



## Use templates or create your own

Access a growing list of reporting templates or build custom reports to fit your needs. Reporting templates include:

- User activity
- Transaction reports
- Pick frequency
- Material value
- Stock shortage
- Fill levels
- Material expiration



Create snapshots of your report data over time



Automate the emailing of key reports on a regular basis (CSV, Excel or PDF)



Create full color bar, pie and line charts



Pull data in JSON format through the API

# Extend the power of ItemPath

**The addition of apps, integrations and automation unleashes the full power of ItemPath. Designed to flexibly fit your needs at every turn, ItemPath is a powerful partner.**

## Apps & Integrations

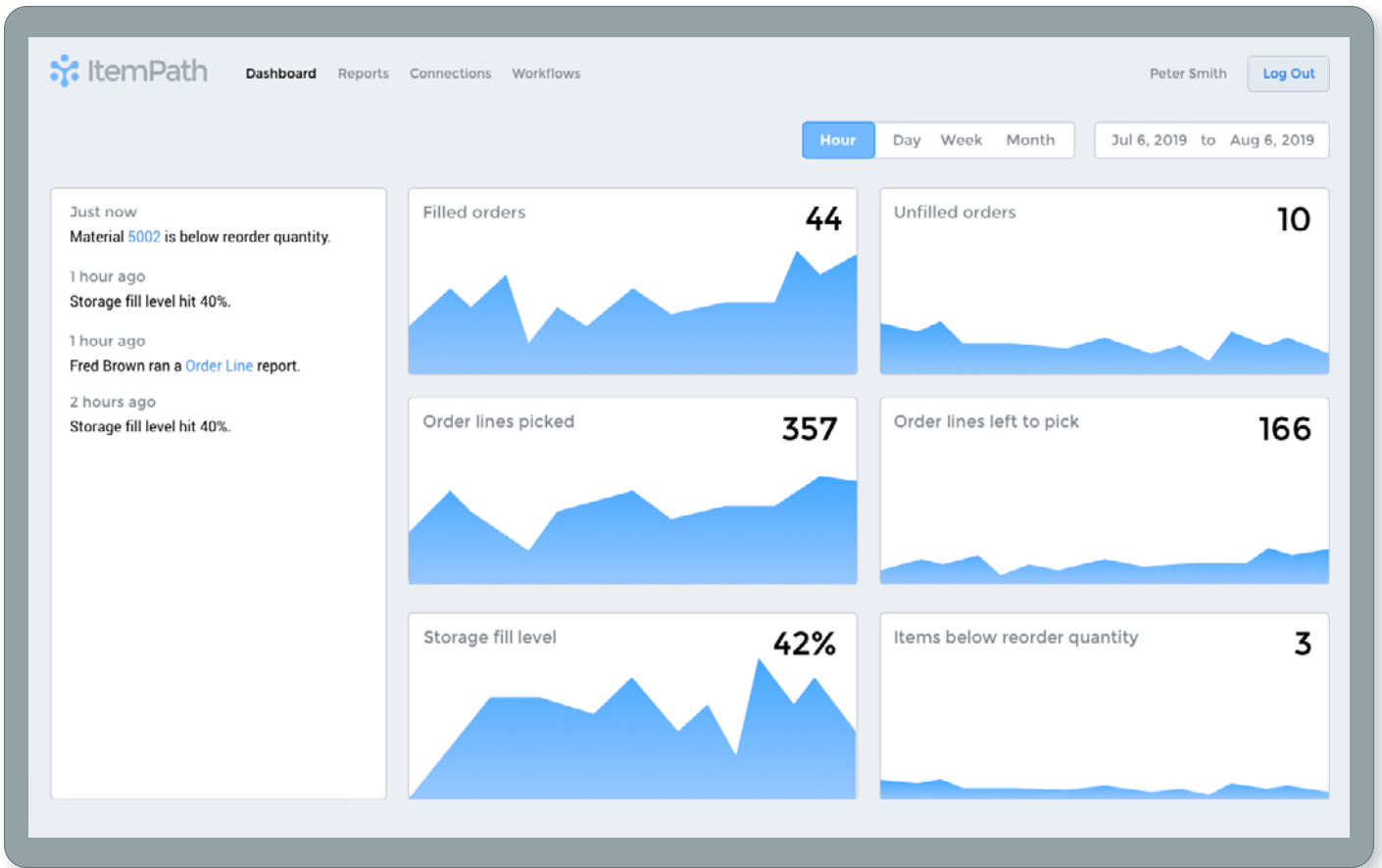
Find the customization you need within the growing library of apps. Each app is designed to extend the power of your storage system and give you control.

- Order Builder to create orders and lines
- Order Processor to pick and put materials
- Variance to keep inventory in sync
- Spreadsheets to create and export data
- SMS/Email to get alerts and notifications
- Count Orders to prevent inventory issues

If you need something highly specialized, we offer development services. With decades of experience working with storage systems and software we are well equipped to tackle your needs.

## Automation

Use automation to trigger actions and tasks based on storage data. Easily setup workflows in ItemPath to automate your business logic and reporting. Use conditions such as – time, report, API, app – to trigger actions like – light, email, SMS, App, API, socket. For example, automation can be used to send a SMS alert when a report hits a certain metric – such as low inventory.



**Customize your reports**

Adjust time ranges, add thresholds and export in a variety of different formats.

**Keep your data secure**

Authentication and user management allow you to keep tabs on your data. With audit history, see who's accessing reports and why.

**Connect to other systems**

In addition to our interface, ItemPath offers a fully featured API to your Kardex Power Pick System installation so you can build to your specifications.



Contact us for more information