



Automated Storage & Retrieval Systems

Scalable Solutions for Efficient Processes

As a leading global partner for intralogistics solutions, Kardex delivers automated storage, retrieval, and material handling systems tailored to your industry and operational requirements.

The portfolio includes automated storage and retrieval solutions for small and medium-sized parts in storage, warehousing and distribution applications. With more than 140,000 installations worldwide, you benefit from proven technology and first-class Life Cycle Service that supports reliable performance and long-term operational stability.

By combining hardware, software, and Life Cycle Service into one seamlessly integrated ecosystem, Kardex ensures your warehouse is connected, scalable, and ready for the future.



Find the solution for your specific needs

Why Automate?	5
Kardex Miniload-in-a-Box	6
Kardex Shuttle	8
Kardex Megamat	10
Kardex Horizontal Carousel	12
Kardex Megamat 115/120/125	14
AutoStore™	16
Software Solutions	18
Life Cycle Services	20



Why Automate?

No matter the product, automated storage and material handling systems reduce manual effort and create more reliable, efficient warehouse operations.

Kardex solutions apply the goods-to-person principle to deliver the right goods directly to the operator. Designed for flexibility, they handle everything from small items to heavy and oversized loads.

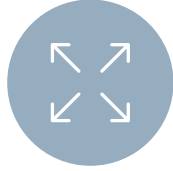
Kardex supports you at every stage of your automation journey. Whether you are implementing your first automated storage solution or expanding a fully integrated warehouse environment, Kardex provides scalable systems that evolve with your operational needs.

The result: higher throughput, optimized space utilization, and long-term operational flexibility.

Benefits at a glance



Increase productivity significantly



Utilize up to 85% more of the space

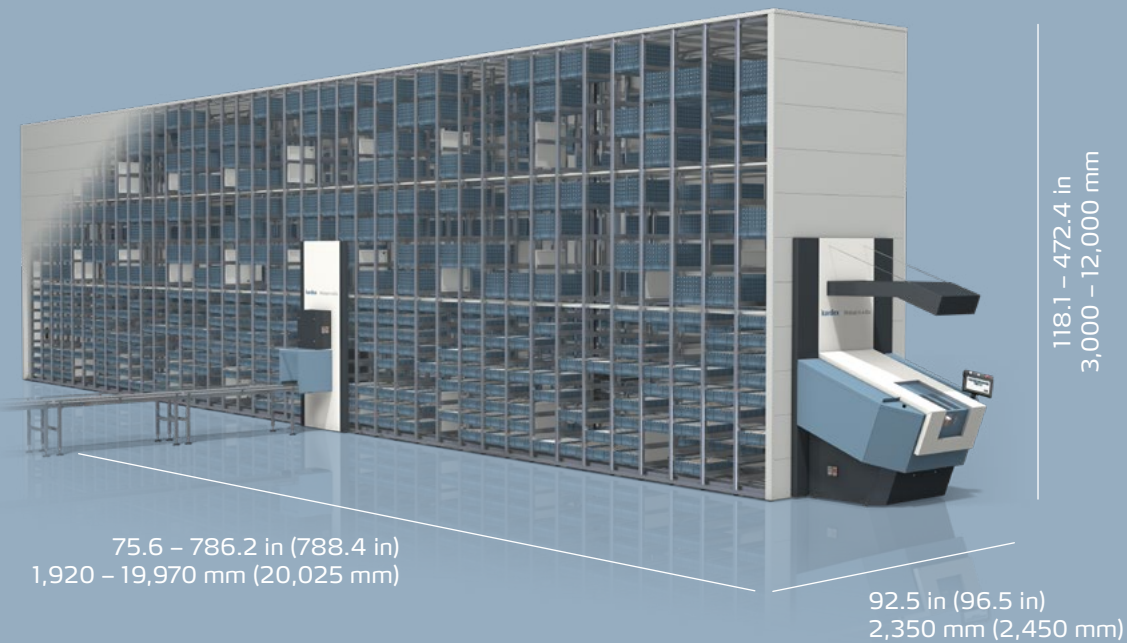


Scale as you grow

Kardex Miniload-in-a-Box

The Kardex Miniload-in-a-Box* belongs to the product family of the Vertical Buffer Module (VBM) and provides solutions for fast-growing product ranges with limited storage space.

The system uses a lightweight mini-load crane with a telescopic gripper to individually transport bins or trays to the access opening point. The energy consumption is reduced by up to 60% versus comparable systems. It is very efficient for fast order picking, efficient order consolidation and assembly kitting.



Fast &
accurate
picking

Flexible
system
integration

Fully
scalable
design

Fast & accurate picking

- Virtually zero error rate due to a single controlled bin
- Fast and precise picking using pick-by-light tools
- Cuts costs with automatic replenishment

Flexible system integration

- Provides a wide choice of inbound and outbound automated interfaces to integrate seamlessly with both existing processes or technology and future automation
- Easily connects with AGVs/AMRs, robotics and conveyor systems
- Fast project completion/delivery

Fully scalable design

- The scalable design can adapt to processes and building layouts
- Customers can choose from several access opening types
- Customizable unit dimensions of up to 65.6 feet (20 meters) long and 39.3 feet (12 meters) high

The Kardex Miniload-in-a-Box stores a wide range of products using either trays or bins. The Kardex VBM Box is tailor-made for the Kardex Miniload-in-a-Box and available in the dimensions 600 × 400 mm and 640 × 440 mm. It flexibly divides and quickly adapts at any time using transverse and longitudinal dividers. The Kardex Miniload-in-a-Box offers a high storage capacity combined with fast access times.

[i Click here to learn more](#)



Kardex Shuttle

The Kardex Shuttle belongs to the product family of the Vertical Lift Module (VLM) and stores two columns of trays vertically on the front and rear of the machine. An extractor located in the middle of the VLM automatically moves trays to the access opening. Optiflex technology measures the height of the stored goods on each tray and assigns them to an ideal storage location. It is very efficient for tool storage, order picking and semi-finished products and spare parts.



High storage density

Wide range of storage goods

Modular unit design

High storage density

- 25 or 50 millimeter storage intervals
- Recover up to 85% of occupied floor space
- Small footprint and dynamic storage space allocation

Wide range of storage goods

- It stores articles in various sizes and weights
- Different product types are available (Kardex Shuttle 250/500 for smaller parts, Kardex Shuttle 700 for medium loads and Kardex Shuttle 1000 for heavy loads or pallets)

Modular unit design

- The unit height can be adjusted quickly and individually
- Multiple access openings (on front and rear side) across several floors possible

The Kardex Shuttle ideally stores light and heavy goods. In combination with the Kardex VLM Box and the Display LED-Navigator users benefit from clear guidance and reduce mispicks to a minimum. The Kardex Shuttle can even become fully-automated by integrating robotics.

[Click here to learn more](#)



Kardex Megamat

The Kardex Megamat belongs to the product family of the Vertical Carousel Module (VCM) and uses the goods-to-person principle to provide quick and precise access to stored goods. This future oriented system, based on the latest technologies, is built with a series of carriers attached in fixed locations to a chain drive. A motor powers the carriers to move in a vertical loop around a track in both forward and reverse directions. It is very efficient for order picking, spare parts management and SMD handling.



83.5 – 394.1 in
2,110 – 10,010 mm

73.8 – 168.3 in
1,875 – 4,275 mm

High
picking per-
formance

Minimal
footprint

Ideal for
uniform
storage
goods

High picking performance

- Fast order picking through the use of smart batching strategies
- Optimized and condensed storage spaces
- Fewer picking errors thanks to position indicators

Minimal footprint

- Up to 75% more storage capacity
- Organized storage of small parts in a minimum footprint

Ideal for uniform storage goods

- Maximum use of available space with uniform storage goods
- Different product types are available (Kardex Megamat 180 for light loads such as textiles and small parts, Kardex Megamat 350 for medium loads like spare parts, Kardex Megamat 650 for heavy loads)
- Many customers use the Kardex Megamat for their SMD handling, it easily handles SMD reels and increases access accuracy rates

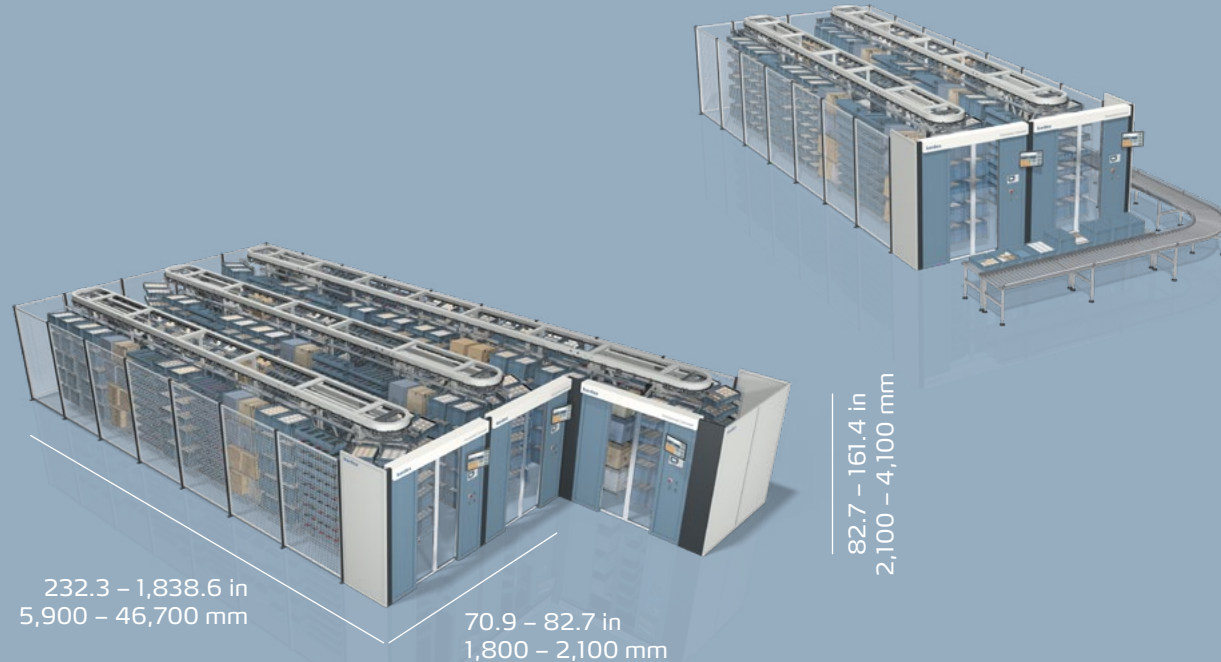
The Kardex Megamat enables fast access to needed goods while optimizing storage space. In combination with the Kardex VCM Box it provides organized storage locations.

 [Click here to learn more](#)



Kardex Horizontal Carousel

The Kardex Horizontal Carousel is used for fast, reliable and cost-efficient storage and picking of goods. It features an oval-shaped track surrounded by carriers equipped with shelves and storage bins. A motor moves the carrier around the track horizontally, stopping at a pre-determined access point for storing and retrieving goods. It is very efficient for order picking, fast parts delivery and in facilities with low ceilings.



High
throughput

Small &
medium sized
storage
goods

Flexible
workstations &
carriers

High throughput

- Taking the shortest route to the access opening and simultaneous carousel movements that are independent of one another ensure high order picking performance
- Display tool assists the operator with order picking
- Batching and simultaneous picking of several orders enable significantly fewer journeys to the shelves

Small & medium sized storage goods

- Suitable for a variety of different applications and ideal for storing a wide range of items

Flexible work stations & carriers

- Order picking at several stations enables high throughput even at peak times and during seasonal fluctuations
- Several people can operate a system at the same time
- Individual shelf steps within the carriers

Kardex Horizontal Carousels provide full flexibility. One picking station can consist of two to four machines. Various layouts, even multilevel applications, are possible.

[i Click here to learn more](#)



Kardex Megamat 115/120/125

The Kardex Megamat 115/120/125 belongs to the product family of the Vertical Carousel Module (VCM) and is an efficient office system. Using the goods-to-person principle it provides quick and precise access to thousands of media types. It is equipped with a series of carriers that attach to a chain drive in multiple, fixed locations. A motor powers the carriers to move in a vertical loop around a track in both forward and reverse directions. It is an efficient solution for the storage of documents, files and confidential media.



86.6 – 147.7 in
2,200 – 3,700 mm

100.8 – 128.7 in
2,560 – 3,269 mm

Secure
storage

Minimal
footprint

Worker
ergonomics

Secure storage

- Confidential documents are securely stored
- Legal regulations to protect the rights of individuals can be met
- Possibility to activate access codes or PINs so only selected individuals can access stored items when utilizing optional automatic security door

Minimal footprint

- A smaller footprint is required compared to manual systems (e.g., drawer and cabinet systems)
- Optimize space with floor to ceiling installations
- They units can extend over several floors

Worker ergonomics

- Automated retrieval (requested item is presented to the user)
- No physical demands, such as long walks or bending and stretching when fetching documents
- People with disabilities or restricted physical mobility can easily work with the solution

The Kardex Megamat 115/120/125 is a secure investment that easily integrates into existing offices and improves productivity while reducing needed space. Companies may customize the unit's color to fit internal branding.

[Click here to learn more](#)



AutoStore™

AutoStore empowered by Kardex is a high-density storage and order fulfillment solution designed to maximize warehouse capacity and throughput. Battery-powered robots move on top of an aluminum grid where bins are stacked vertically, retrieving and delivering bins directly to connected workstations for picking and replenishment. Thanks to its modular cube design, AutoStore can expand without impacting ongoing operations.

Maximum space utilization

- Vertically stacked bins maximize storage density
- Up to 4 × more inventory in the same footprint vs. conventional systems
- Flexible grid layout fits different warehouse sizes and shapes

Future-proof & scalable

- Modular design makes expansion simple as business needs grow
- Add capacity without disrupting ongoing operations
- Supports a wide range of small parts across industries

Fastest order fulfillment

- Battery-powered robots deliver bins directly to picking and replenishment ports
- Robots continuously retrieve, rearrange, and present inventory on demand
- Proven performance with 99.6% global average availability.

AutoStore empowered by Kardex is a highly efficient storage and order fulfillment solution designed for a wide range of industries and applications. With a flexible, modular grid system, high-density storage, and fast robot-based goods-to-person delivery, it supports reliable operations today and scalable growth for tomorrow.

 [Click here to learn more](#)



Maximum
space

Scalable
design

Fast
order
fulfillment

Software Solutions

Warehouses are becoming smarter, more connected, and increasingly data-driven. Their full potential is unlocked through software.

Kardex offers a comprehensive portfolio of software solutions covering:

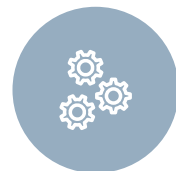
- Warehouse Execution Systems (e.g., Kardex Power Pick Cloud, Kardex FulfillX)
- Machine Monitoring (e.g., Kardex Connect)
- Performance Insights (e.g., Kardex Analytics)
- Secure Remote Access
- and much more

All Kardex systems and warehouse processes are **powered by the KardexOne Software Platform**. By connecting automation, material flow, and business systems, you benefit from seamless interaction between hardware and software across all levels of automation.

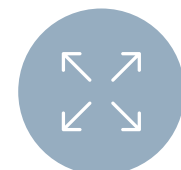
Benefits at a glance



Intuitive interfaces and guided workflows simplify daily operations



Easily adapt workflows, rules, and screens without disrupting daily business



Expand users, sites, and functionality seamlessly as your business grows



Protect operations with encrypted data transmission, access control, and regular security updates



Life Cycle Services

Long-term performance of automated solutions requires continuous support. Kardex Life Cycle Service supports your system throughout its life cycle, maintaining performance, protecting your investment, and preparing your operations for the future.

Our service approach follows a continuous cycle:

Smooth go-live

Professional commissioning, operator training, and ramp-up support ensure a seamless start and stable system performance from day one.

Ensure availability

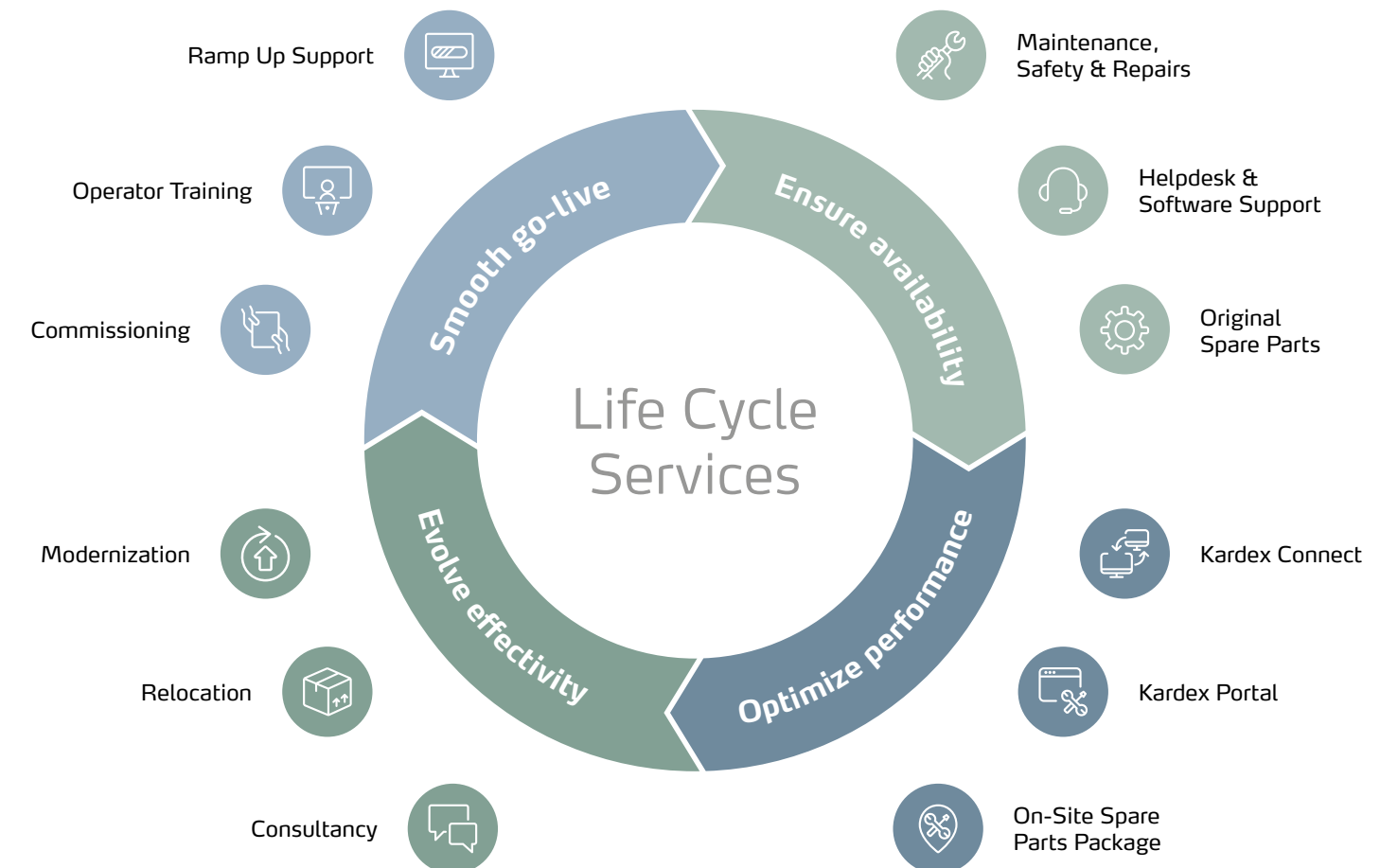
Preventive maintenance, original spare parts, safety services, and responsive helpdesk support safeguard maximum uptime and operational reliability.

Optimize performance

Digital services such as Kardex Connect with remote support and Kardex Analytics enhance transparency, improve performance, and reduce unplanned downtime.

Evolve effectiveness

Modernization, relocation, and consultancy services adapt your system to new requirements and ensure long-term investment security.



Global Expertise with Local Presence

Kardex is your global partner for smart intralogistics solutions delivering semi and fully automated systems worldwide. With a strong international footprint and a broad network of local specialists, Kardex supports you from initial concept and system design to implementation and long-term operational support.

By combining global expertise, unified software solutions, and Life Cycle Service, Kardex supports sustainable warehouse performance for customers from various industries worldwide.

Take your intralogistics to the next level and contact a local team member for a complimentary, on-site consultation.

 Get in touch

