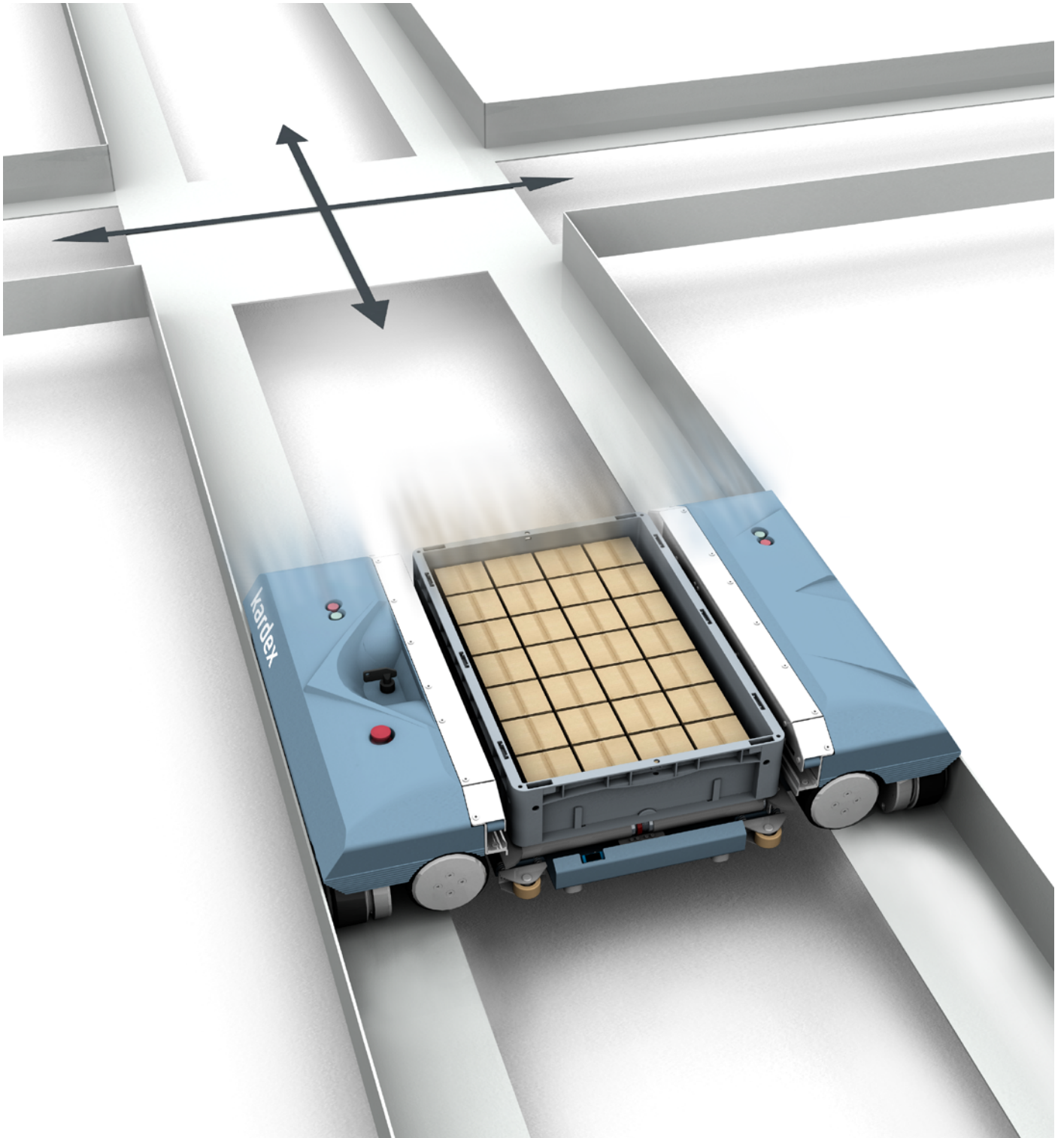


Factsheet

Kardex MCrossDrive 3D System Solutions



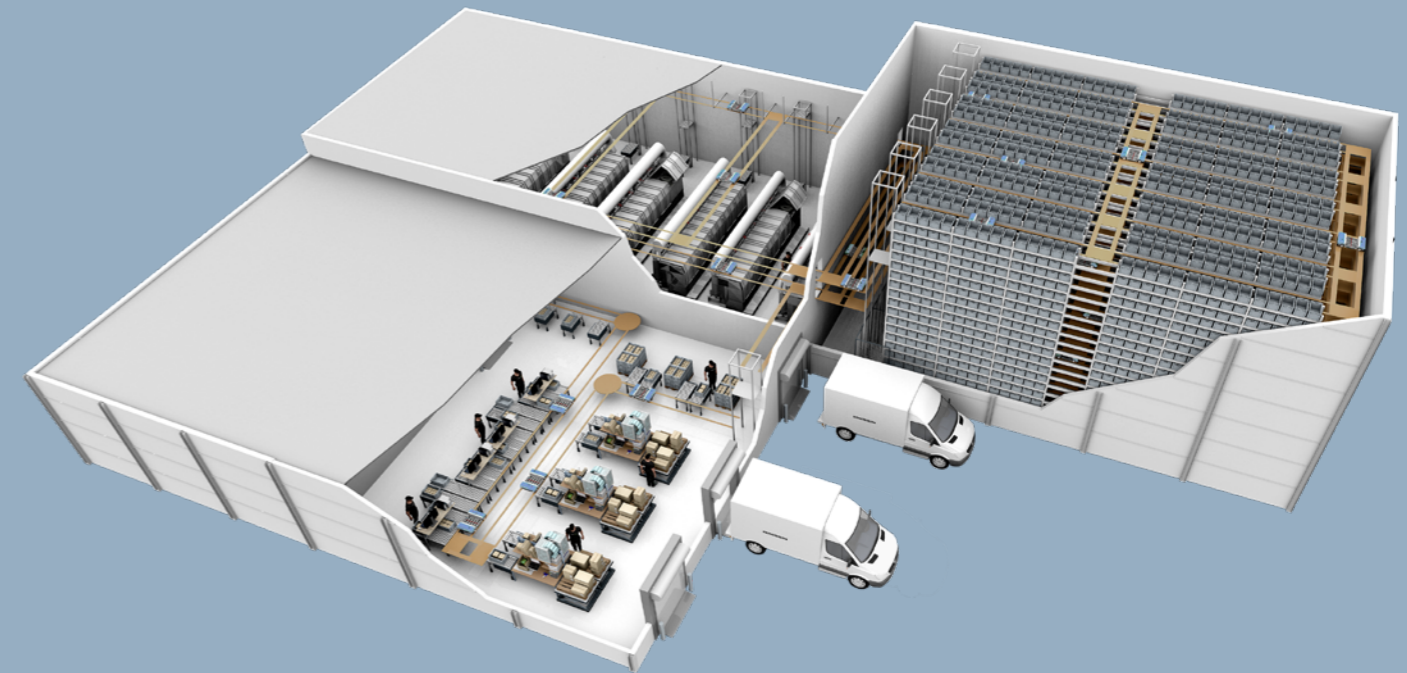
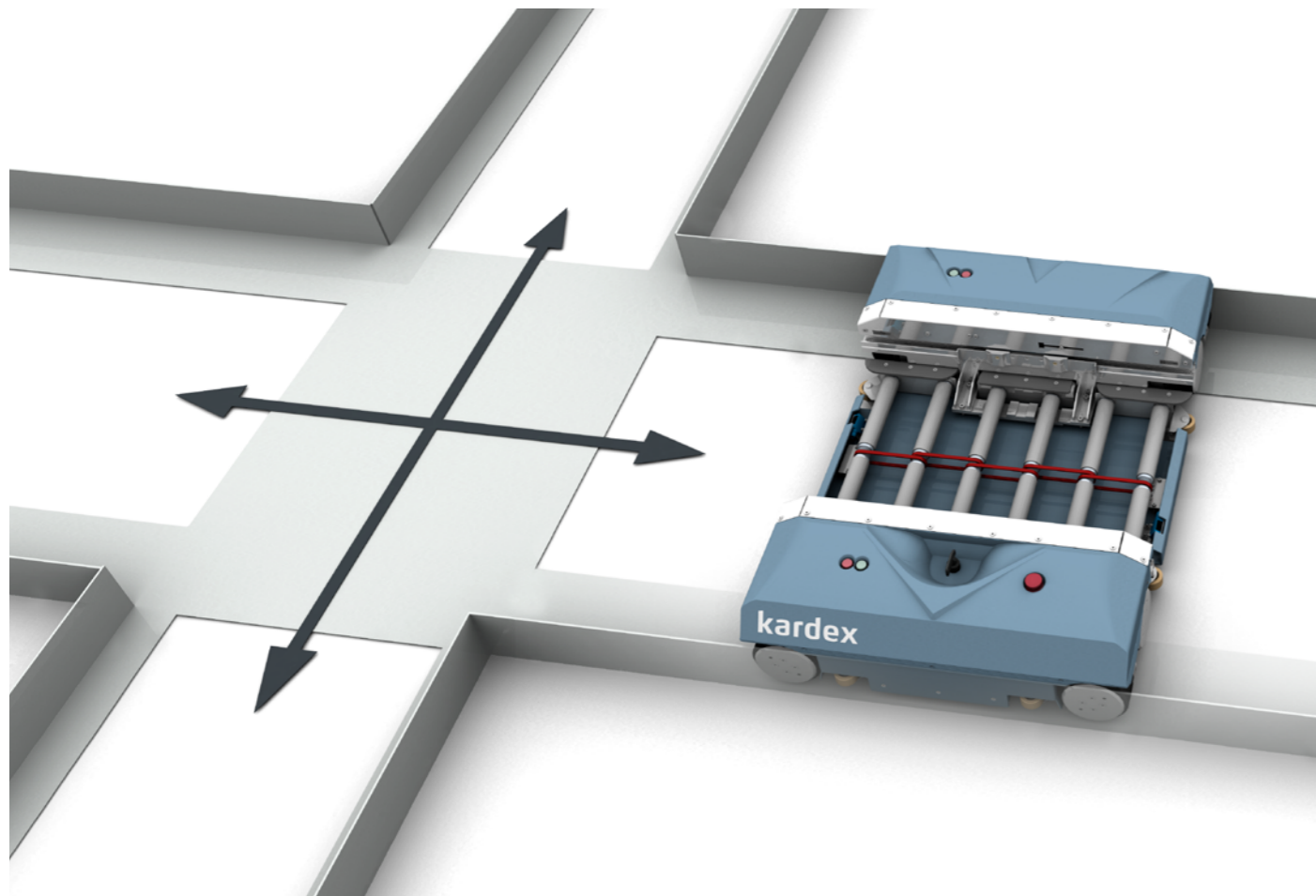
Variable container shuttle

For scalable storage and transport systems

Our in-house developed container shuttle, Kardex MCrossDrive 3D, forms the basis of scalable system solutions for your warehouse. With maximum scalability and flexibility, it enables cost-effective access to automation and virtually unlimited options to quickly and economically extend your warehouse capacity and performance levels.

Start off with a racking system tailored to fit your current requirements, a shuttle vehicle, and a vertical lift device. This set-up enables dynamic handling of multiple orders with smaller volumes. As the size and number of orders, or the product diversity, changes over time, you can supplement additional aisles or additional shuttles at any time without disrupting ongoing operations.

The Kardex MCrossDrive 3D is thus ideally suited for companies with solid growth prospects, who are looking for a future-proof solution for the development of their material flows – from start-ups right through to high volume companies.



Properties

The Kardex MCrossDrive 3D is designed to accommodate containers and its high travel speeds and efficient energy usage enable continuously high goods-handling figures.

Loading devices	Containers 600 × 400 mm
Storage/Retrieval	Single-deep
Load	Up to 50 kg
Weight of device	90 kg
L × W × H	910 × 680 × 220 mm
Travel directions	X and Z axis - (Y axis possible with stationary lifter)
Manual emergency release	
Robust RFID position recording	
Easy-maintenance modular design	

Maximum space efficiency

Convert unused space into a valuable storage area

The Kardex MCrossDrive 3D is not restricted to a specific aisle or floor of a building and can move freely longitudinally, laterally and vertically. Directional changes of 90° are maneuvered via an automatic axle change, and lifting stations enable different levels of racking to be accessed.

This means that, even in challenging spatial conditions, it is possible to implement variable and high-performance system solutions. The MCrossDrive 3D converts unused space into valuable storage space.

Universal applications

Cost-effective conveyance with the Kardex MCrossDrive 3D

With regard to the conveying technology, the shuttle vehicle enables implementation of especially economical and efficient transport solutions. Performing like a taxi, it permits material flow between the individual stations and processes such as goods receipt, picking and goods issue.

Here, the shuttle vehicle makes use of a robust and low-maintenance rail construction, which requires a significantly lower investment than conventional continuous conveying technology.