

Factsheet

# AutoStore™ empowered by Kardex



**kardex**



# AutoStore™ empowered by Kardex

As a global AutoStore partner, Kardex offers the fastest order fulfillment system per square foot on the market. Applicable across multiple industries and able to handle any kind of small parts, AutoStore solutions from Kardex are redefining warehouse operations.

AutoStore systems are operated by battery-powered robots that move on an aluminum cubic grid. Within this grid, storage bins are stacked on top of each other. The autonomous high-speed robots continuously pick up the bins, rearrange them and deliver them to the directly connected workstations for order picking and replenishment. Thanks to the modular construction principle, AutoStore systems can easily expand without impacting ongoing operations. The extremely flexible grid system optimizes storage density to its maximum, enabling the inventory to be quadrupled in the same space compared to conventional systems. With a global average availability of 99.6%, AutoStore is the most efficient and reliable storage system in the world.

**Maximum**  
space  
utilization

**Future**  
proof &  
scalable

**Fastest**  
order  
fulfillment



## Application range

### **E-commerce order fulfillment**

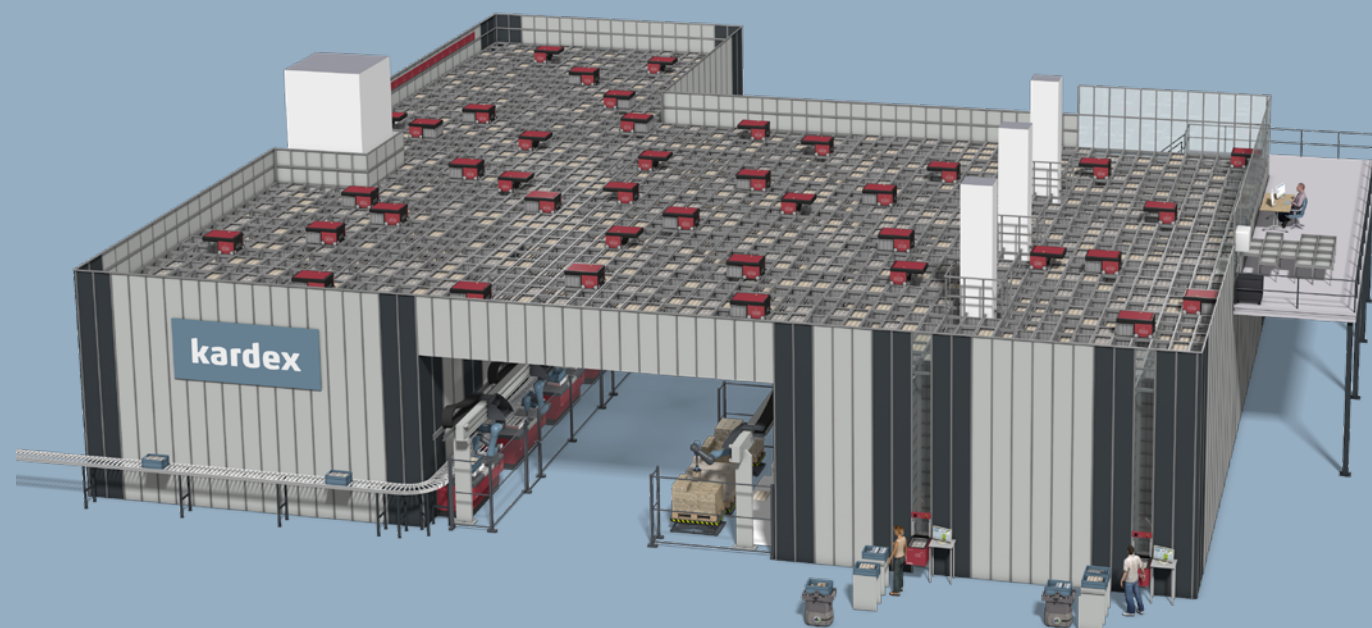
From same day delivery demands to customized products and stress-free returns, many e-commerce providers struggle to keep up with today's customer expectations. With this in mind, tailor-made AutoStore solutions from Kardex offer several features to help e-commerce companies successfully grow while maintaining a competitive edge.

### **Just-in-time supply of production lines**

As customer requirements continue to change at a minute's notice, companies need to keep a steady growing range of parts in stock. AutoStore supplies just-in-time production lines with parts that are stored in the densest possible way.

### **Micro-fulfillment solutions**

Whether you operate in the backroom of a store, the center of a store or a small corner of a warehouse, AutoStore is compact enough to fit almost anywhere. Due to high-density storage, the in-store product assortment can be expanded, while providing an engaging customer experience.



## Bin dimensions and loads

Outside dimension (l × w) 649 mm × 449 mm | 25.6 in × 17.7 in

Inside dimension (l × w) 603 mm × 403 mm | 23.7 in × 15.9 in

Max. load capacity 30 kg | 66.1 lbs

### Bins are available in the following three heights

Outside 425 mm / 330 mm / 220 mm | 16.7 in / 13 in / 8.7 in

Inside 404 mm / 312 mm / 202 mm | 15.9 in / 12.3 in / 8 in

Max. stack 14 bins / 16 bins / 24 bins

 [Learn more](#) about AutoStore

# Components



### Bins

- Made of either polyethylene (HDPE) or anti-static ESD
- Lengthwise and crosswise bin dividers can maximize capacity



### Grid

- Bins are stacked vertically in the grid and retrieved by robots
- Grid can be installed to fit any warehouse size and shape



### Robots

- Operate 24/7 regardless of lighting & recharge automatically
- If one robot breaks down, another one takes over its tasks



### Ports (workstations)

- Various port options available based on functionality and speed
- Switch between picking & replenishing at the push of a button



### Controller

- Command center, traffic control & database management
- Connects the network to the customer's infrastructure



# Complementary technology

Kardex can install AutoStore either as a stand-alone solution or integrated into an overall logistics concept. By pushing warehouse automation to its limits, order fulfillment will see significant cost savings and enhanced performance.



## Conveyor technology

- AutoStore ports can be linked directly to conveyor systems
- Smooth transition to sub-systems (e.g., carton erectors & sealers, labelers, palletizers, AGVs and AMRs)



## Pick and place robotics

- AutoStore ports can be operated by integrated robots
- Robots work with various processes including pick-to-tote, pick-to-belt, pick-to-pallet, consolidation and replenishment



## Software

- Modular and customized software solutions
- Integrate into existing process environments or serve as superior control software



## Why partner with Kardex?

The right partner can help you navigate the automation journey to meet and exceed your goals. Kardex has a dedicated team with many years of experience in planning and implementing tailor-made AutoStore solutions within a wide range of industries. Our aim is to take everything into account – combining different technologies and providing complete, integrated, and cutting-edge intralogistics solutions from a single source.

We have dedicated project managers committed to working side by side with you through system concept, design, and installation. Our team will also be onsite during the installation and ramp up phase to ensure a smooth transition for you and your team. Using our extensive nationwide service and support network, you will be fully supported throughout the lifecycle of your AutoStore system, even in the most remote location. We are always close to you – worldwide.

# Smart Intralogistics Solutions

Kardex offers an A-Z product portfolio targeting the niche needs of various industries. Discover innovative offers ranging from everyday handling of bins and pallets or storage in controlled environments to fully-integrated automated storage solutions and material handling systems. From day one, the Life Cycle Service team works hand-in-hand to support your project implementation, maintenance and future plans.

