



HIMSS MARKET INSIGHTS PULSE SURVEY

The current state of healthcare analytics platforms

What executive, IT, technology, and clinical leaders are saying about data utilization within hospitals and health systems.

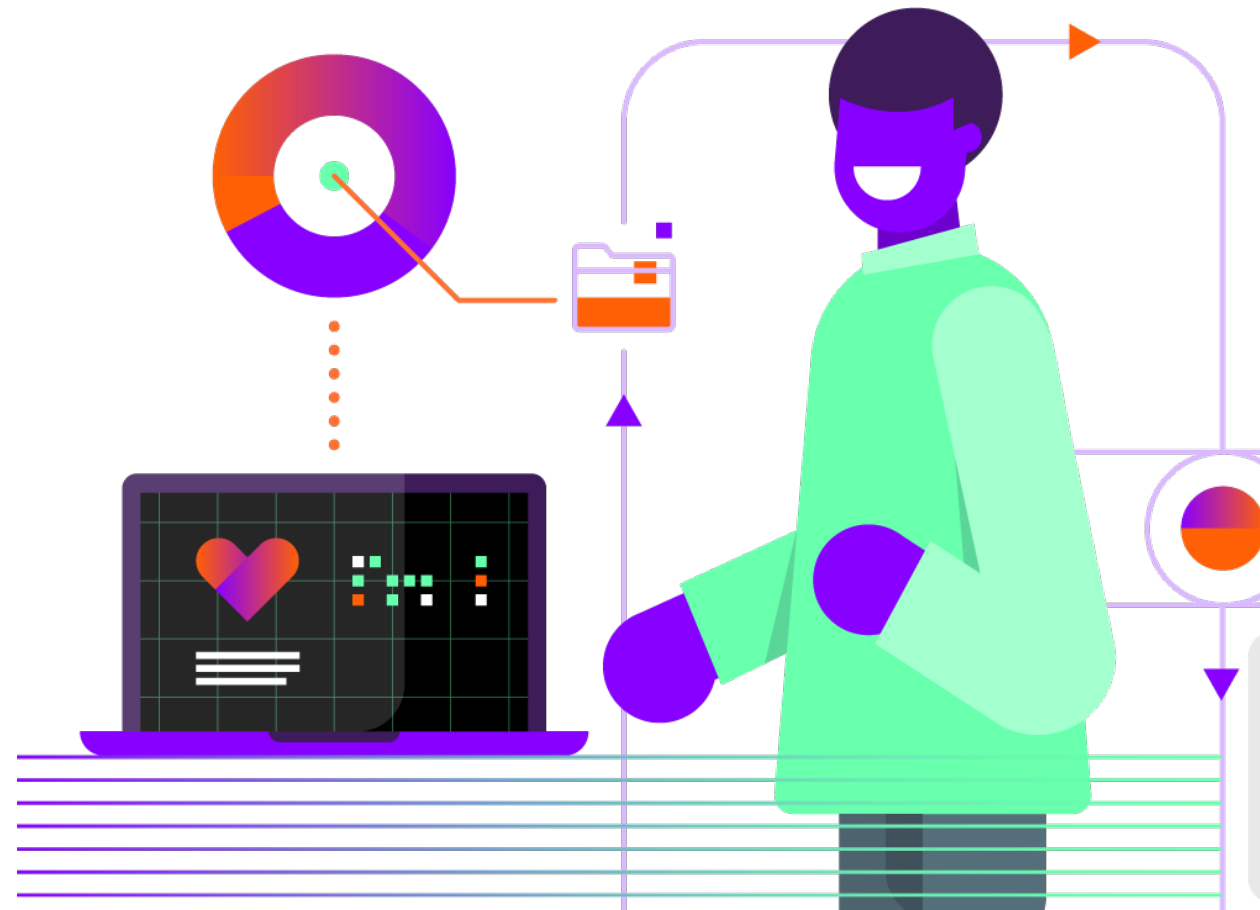


Research Overview

HIMSS Market Insights conducted this research among executives, IT, technology, and clinical leaders to understand utilization of data within hospitals and health systems.

Topics included:

- Satisfaction with current analytics platform solution(s)
- Integration of applications/technologies with data analytics platforms
- Challenges encountered with investments in analytics platforms/upgrades
- Reliability and use of analytics data



Key Takeaways

9-in-10 agree that quality data is critical to an organization's performance

Many organizations have already made progress in integrating their systems with a data analytics platform. For those who haven't, 27% say communications platforms and 25% say population health management are top priorities within the next 12 months.

Organization size dictates priorities

Organizations with 15,000+ employees plan to implement clinical decision tools (94%), while those with 7,500+ employees (38%) are more likely to have plans to implement decision-making tools for their provider networks. At larger and smaller organizations, C-suite roles (30%) are more likely to prioritize AI/ML solutions within the next 12 months.

Investing in analytics is a common challenge across healthcare organizations

Other strategic priorities (71%) and limited staff resources (58%) are the greatest barriers to analytics platform investments. Organizations with less than 1,000 hospital beds are more likely to face resistance from clinicians and analysts in adopting new workflow solutions, while decision-makers are more likely to report inaccurate data. Organizations with less than \$1.1B in revenue are more likely to face resistance from leadership.

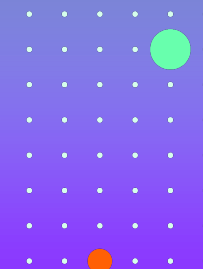
A third state that their data is less than 76% accurate

Those in executive leadership roles (80%) report a significantly higher average percent of data accuracy compared to those in other roles.

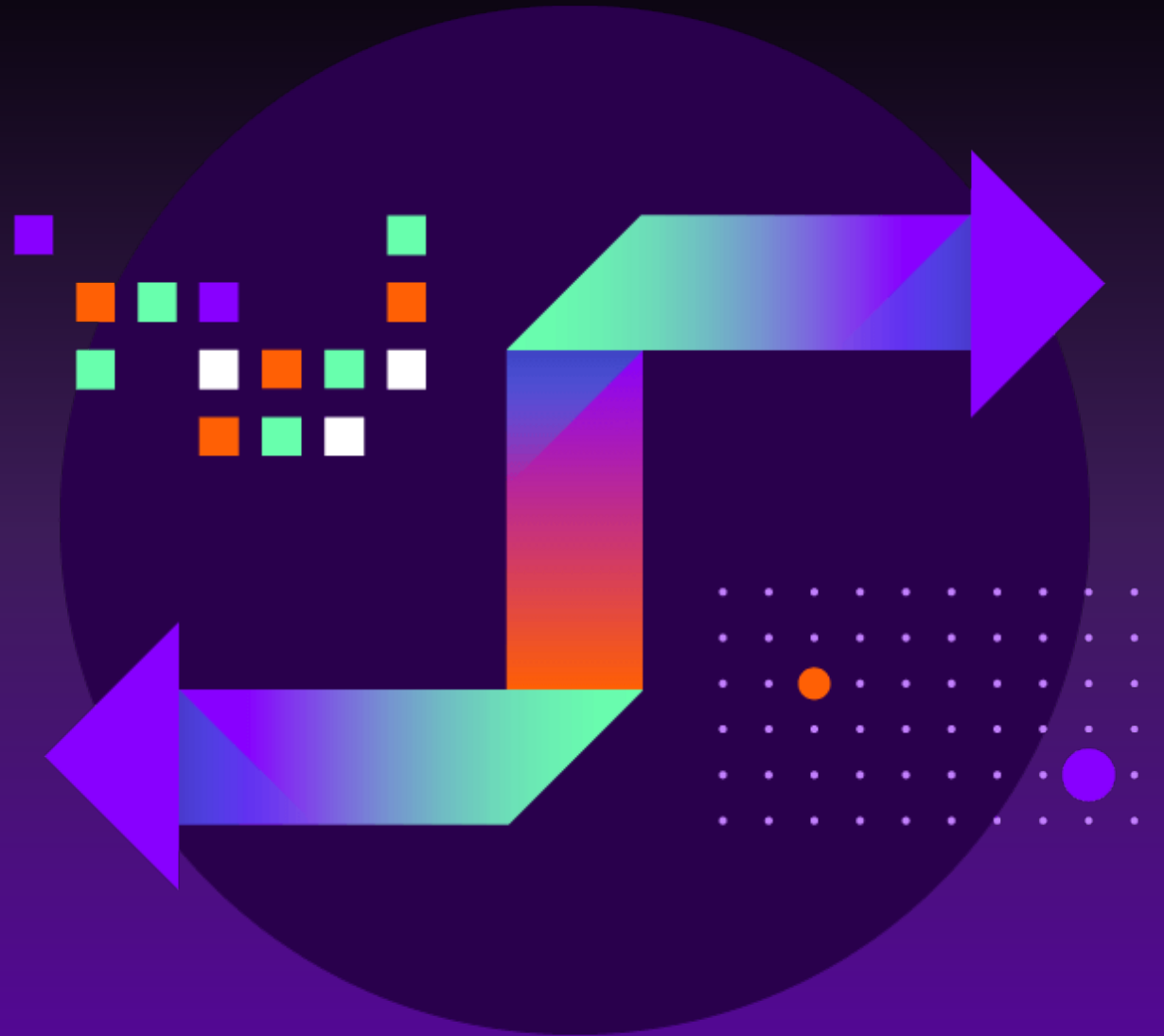
Only 57% of an organization's data is being used to make decisions

Those who work within an IDN/Multi-hospital (64%) are more likely to report their data is used to make intelligent business decisions.

Hear leaders from top healthcare organizations discuss these results at arcadia.io/bigdata



Detailed Findings



93%

agree that quality data is critical to performance

Organizations that **do not use Epic as their primary EHR** report higher agreement with this statement compared to organizations that use Epic as their primary EHR.

100%

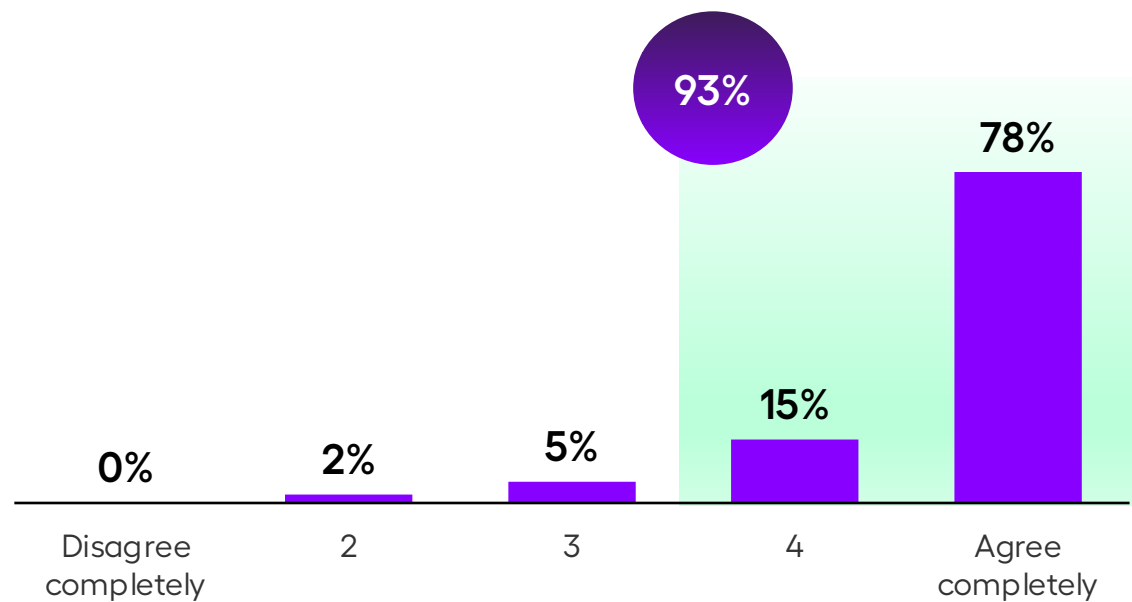
amongst organizations that primarily use Cerner or other EHR platforms

vs.

87%

amongst organizations that primarily use Epic

Having access to quality data and the ability to utilize that data across all our platforms/workflows is critical to our organization's system-wide performance.



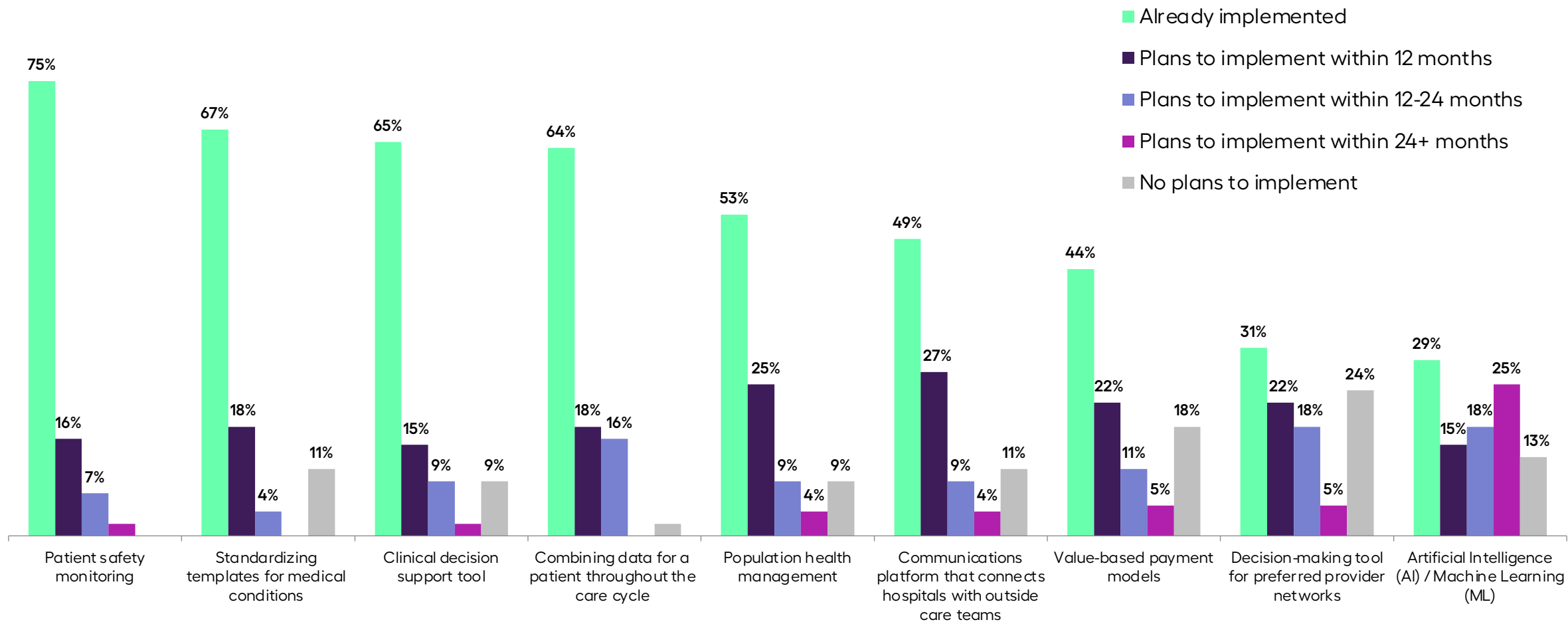
Please rate your level of agreement with the following statement, where 1=Disagree completely and 5=Agree completely: Having access to quality data and the ability to utilize that data, across all our platforms/workflows, is critical to our organization's system-wide performance Base: Total Respondents; n = 55

25%

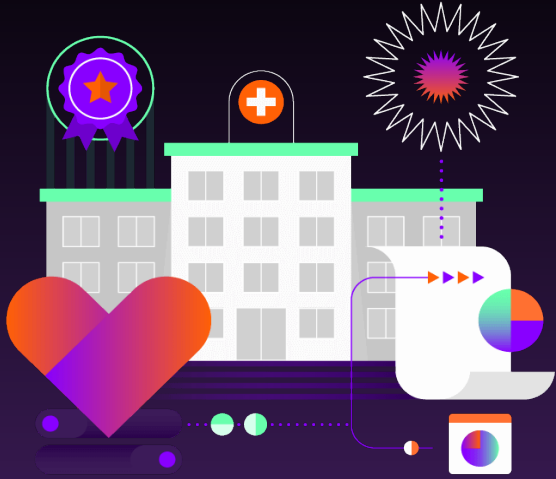
plan to integrate population health management with an analytics platform within the next 12 months



Which of the following applications/technologies is your organization either planning to integrate or has already integrated with a data analytics platform?



'Other' 2%, not shown. Data labels under 3% not shown. Base: Total Respondents; n = 55



Larger organizations are more likely to implement clinical decision tools within the next 12 months

94%

amongst organizations with 15,000+ employees*

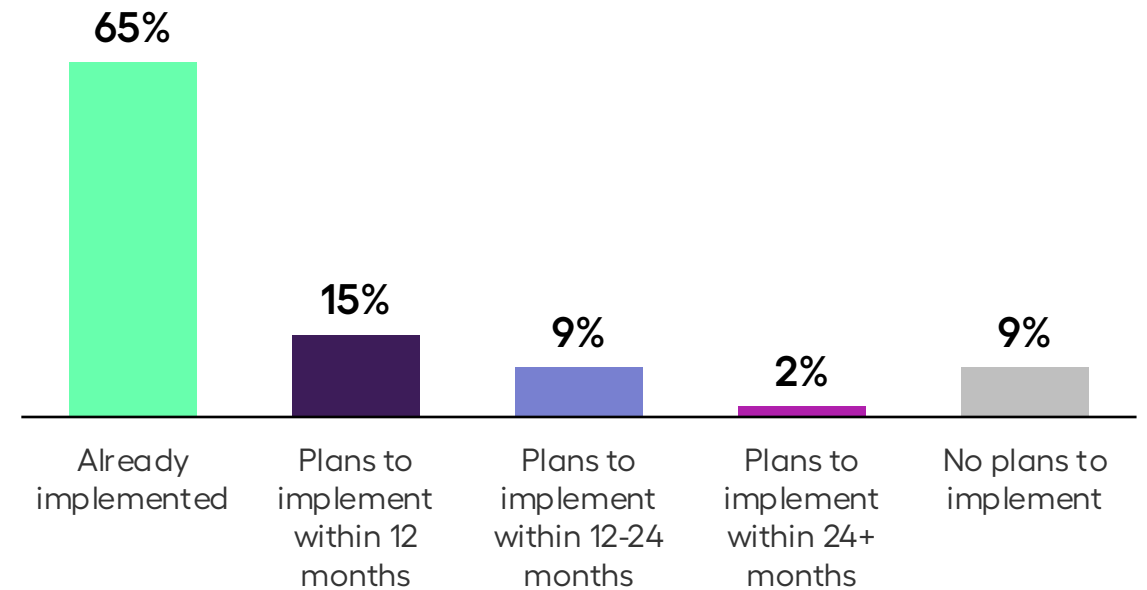


68%

amongst organizations with 2,500 – 14,999 employees*

*Small base sizes, insight is directional.

Clinical Decision Support Tool



Base: Total Respondents; n = 55



Multi-hospital systems are less likely to standardize templates for medical conditions within the next 12 months

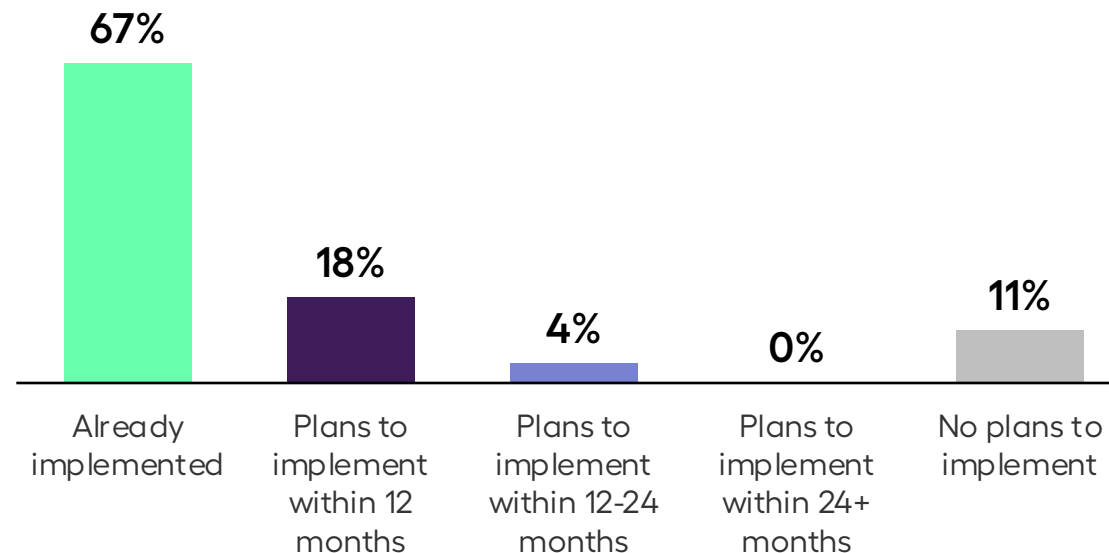
33%
amongst AMC/
Stand-alone/Specialty*



9%
amongst
IDN/Multi-Hospitals

*Small base sizes, insight is directional.

Standardizing Templates for Medical Conditions



Base: Total Respondents; n = 55



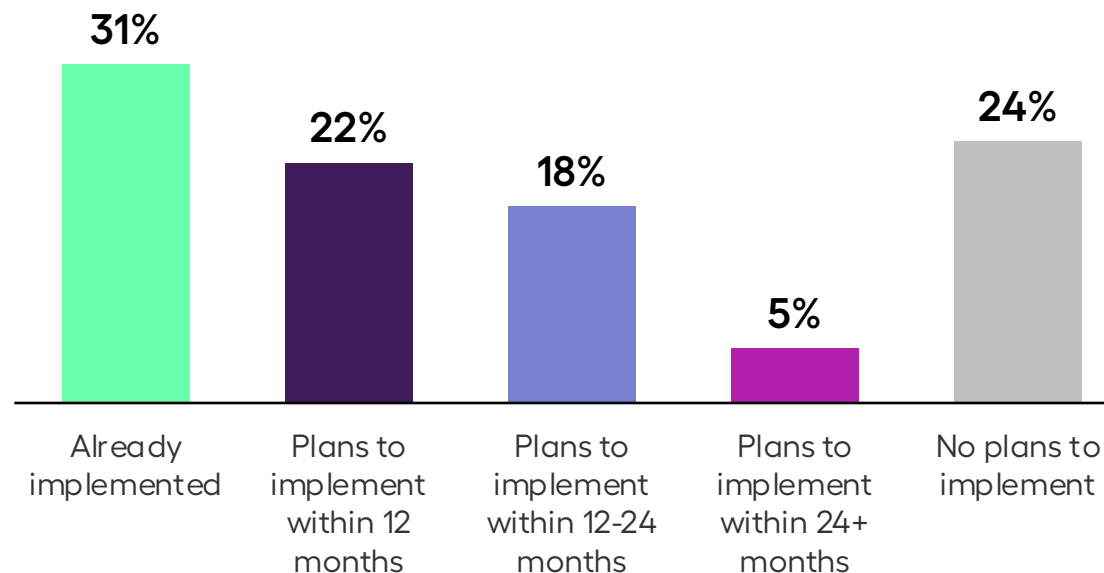
Larger organizations are significantly more likely to implement a decision-making tool for preferred providers within the next 12 months

38%
amongst organizations
with 7,500+ employees



10%
amongst organizations
with <7,500 employees

Decision-Making Tool for Preferred Provider Networks



Base: Total Respondents; n = 55



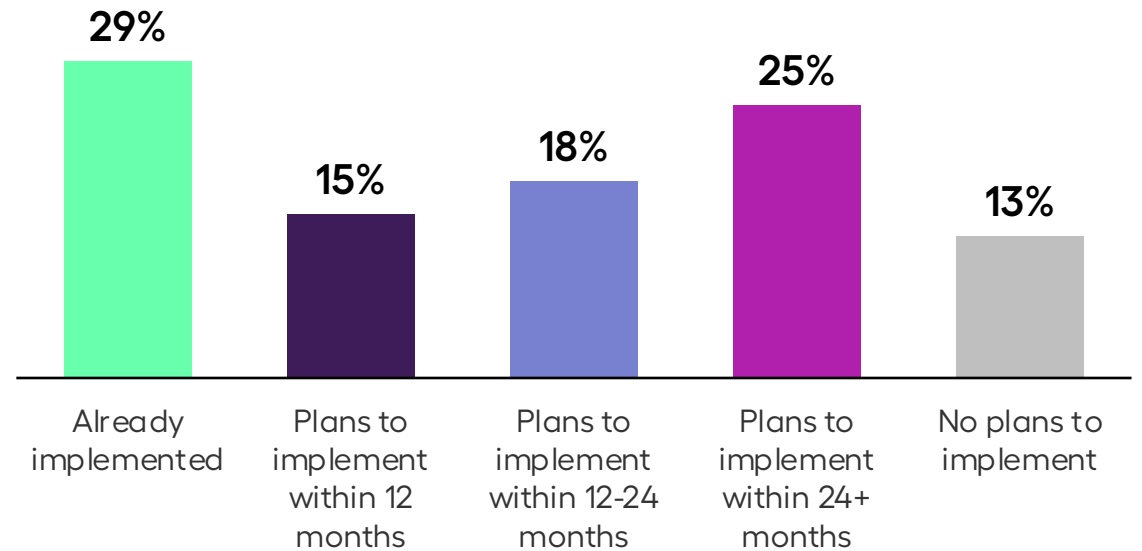
Epic users are more likely to have already implemented AI/ML

43%
amongst organizations
that use Epic



12%
amongst organizations
that use other EHRs

Artificial Intelligence (AI)/Machine Learning (ML)



Base: Total Respondents; n = 55



Those in a C-suite role are more likely to implement AI/ML within the next 12 months

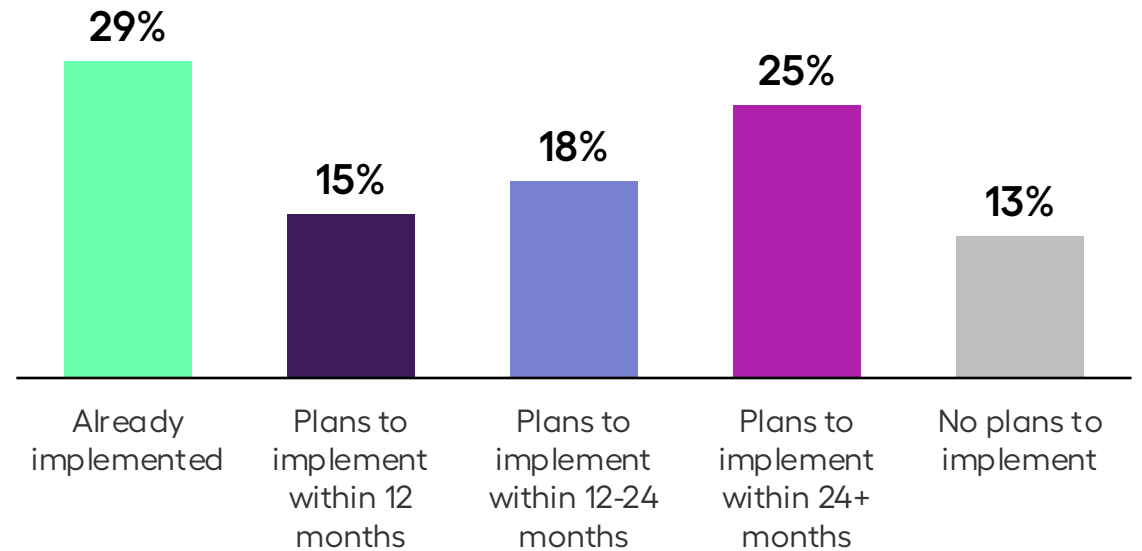
30%
amongst C-suite titles*



7%
amongst EVP to
director-level titles

*Small base sizes, insight is directional.

Artificial Intelligence (AI)/Machine Learning (ML)



Base: Total Respondents; n = 55

82%

are satisfied with their current analytics platform

Organizations with 15,000+ employees are significantly more likely to be very/somewhat satisfied with their current analytics platform solutions compared to organizations with 2,500-14,999 employees.

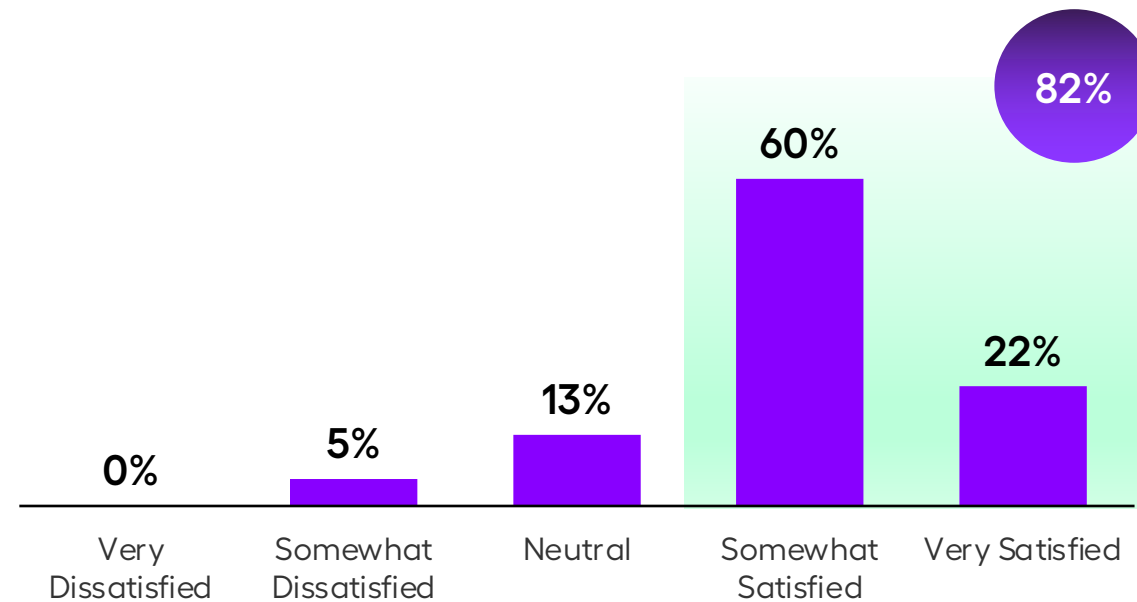
100%
amongst organizations with 15,000+ employees*

vs.

68%
amongst organizations with 2,500-14,999 employees*

*Small base sizes, insight is directional.

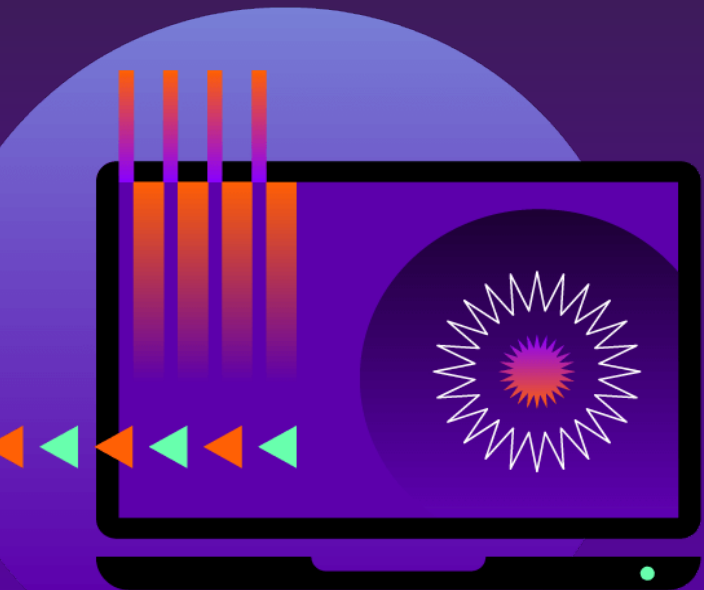
How satisfied are you with your current analytics platform solution(s)?



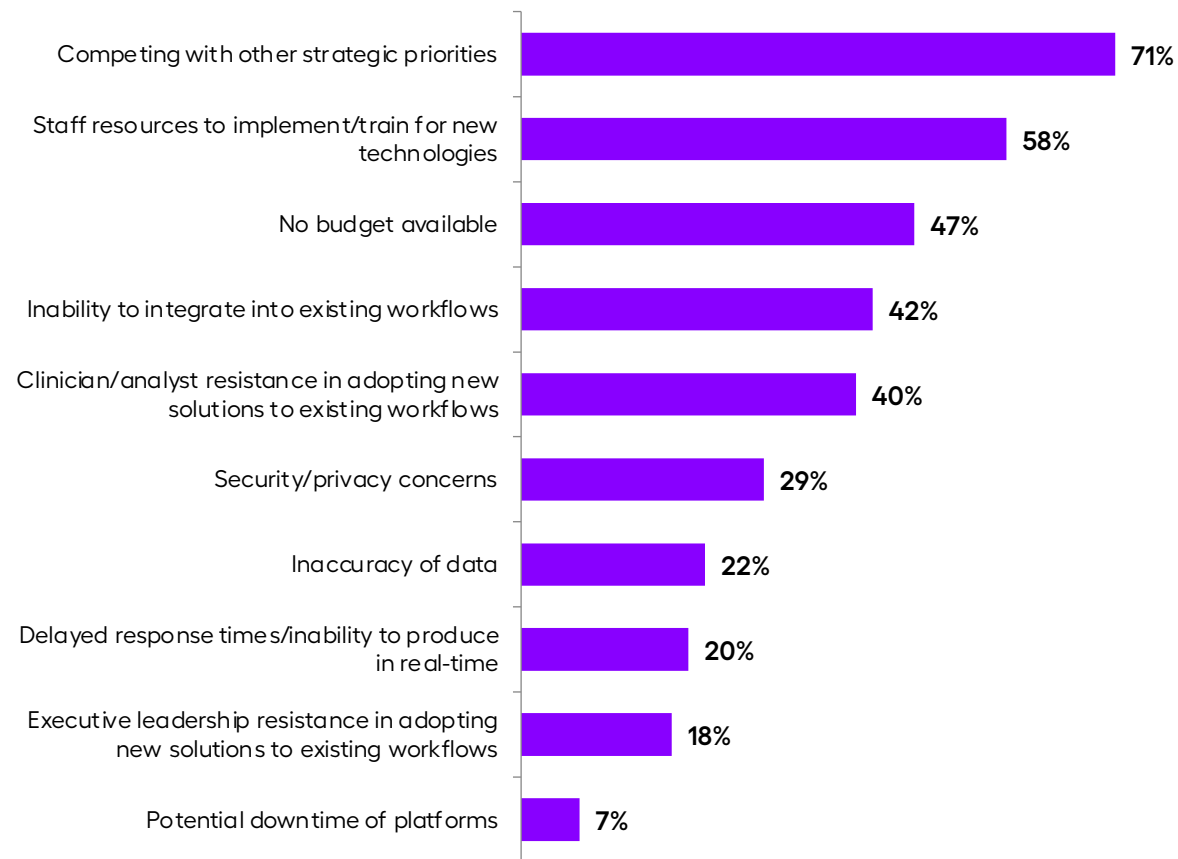
Base: Total Respondents; n = 55

7-in-10

stated that other strategic priorities get in the way of investing in analytics platforms



Which of the following, if any, are challenges or barriers that your organization faces with investments in an analytics platform(s) or upgrades/modernization to current analytics platforms?



'Other' 4% & 'We do not have any barriers at this time' 4%, not shown
Base: Total Respondents; n = 55

Smaller organizations are less likely to report challenges with workflow adoption

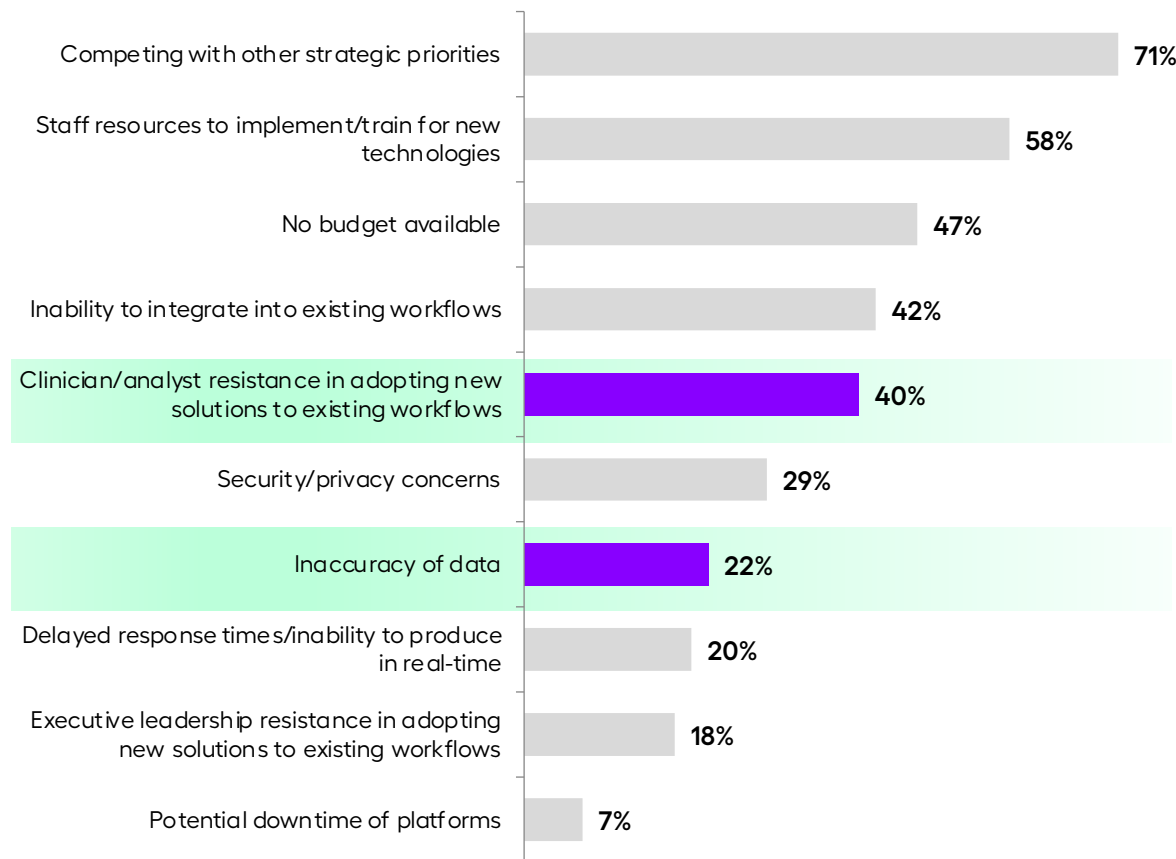
55% amongst <1,000 hospital beds **vs.** **18%** amongst 1,000+ hospital beds*

Decision makers are more likely to report challenges with inaccurate data

36% amongst decision makers* **vs.** **12%** amongst influencers

*Small base sizes, insight is directional.

Which of the following, if any, are challenges or barriers that your organization faces with investments in an analytics platform(s) or upgrades/modernization to current analytics platforms?



'Other' 4% & 'We do not have any barriers at this time' 4%, not shown
Base: Total Respondents; n = 55

Executives at smaller organizations are more resistant to adopting new solutions

35%
amongst organizations with less than \$1.1B in revenue*

vs.

4%
amongst organizations with \$1.1B+ in revenue

33%
amongst stand-alone/specialty/AMC organizations*

vs.

9%
amongst IDN/Multi-hospital

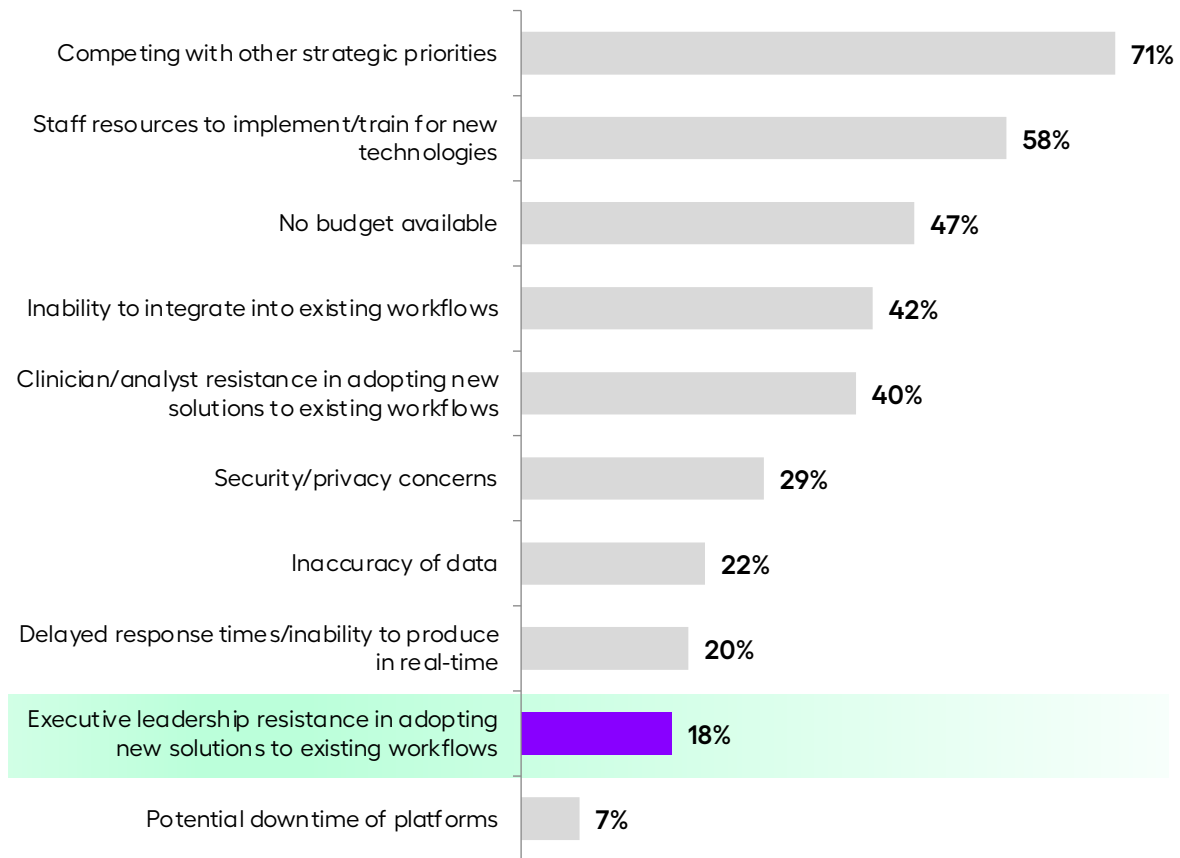
29%
amongst organizations with less than 7,499 employees

vs.

4%
amongst organizations with 7,500+ employees

*Small base sizes, insight is directional.

Which of the following, if any, are challenges or barriers that your organization faces with investments in an analytics platform(s) or upgrades/modernization to current analytics platforms?



'Other' 4% & 'We do not have any barriers at this time' 4%, not shown
Base: Total Respondents; n = 55

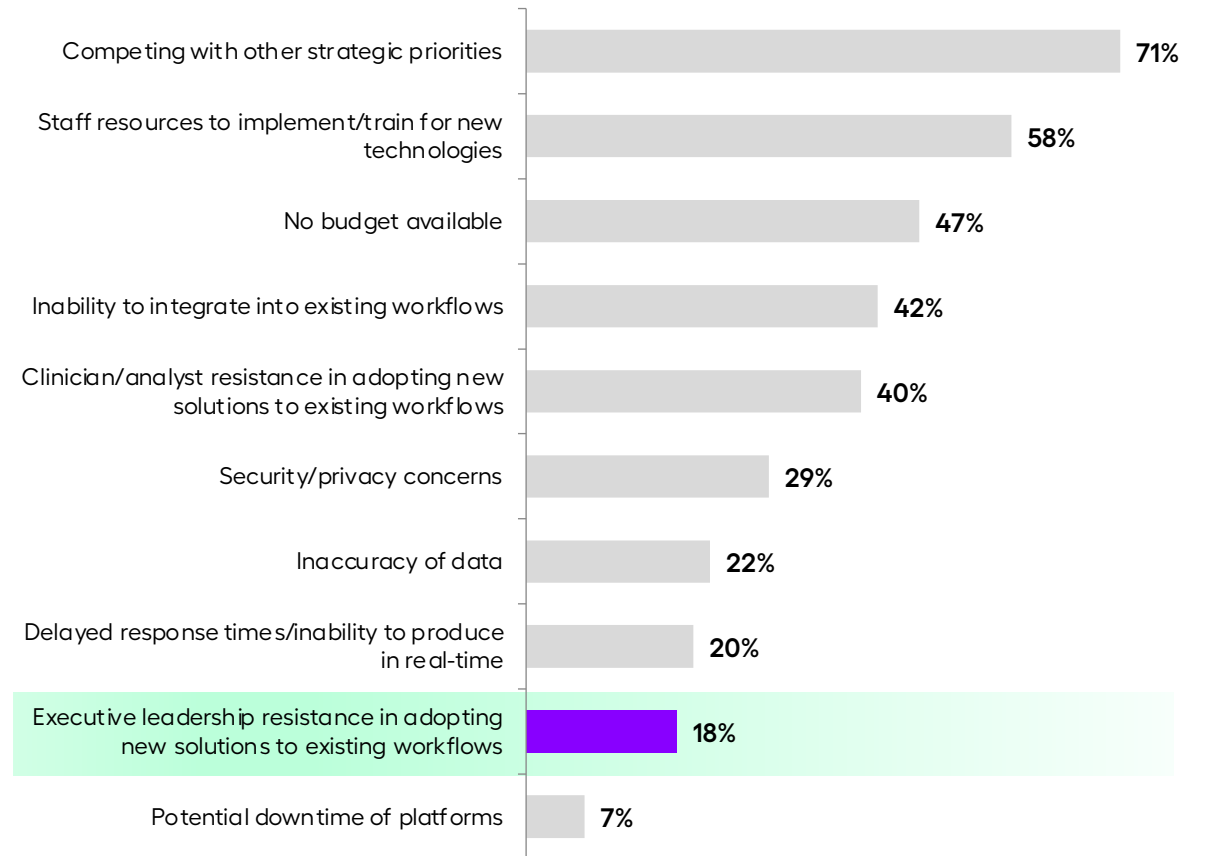
IT, tech, and clinician roles are more likely to report resistance from executive leadership

29% amongst IT, tech, and clinicians **vs.** **7%** amongst executive leadership



*Small base sizes, insight is directional.

Which of the following, if any, are challenges or barriers that your organization faces with investments in an analytics platform(s) or upgrades/modernization to current analytics platforms?



'Other' 4% & 'We do not have any barriers at this time' 4%, not shown
 Base: Total Respondents; n = 55

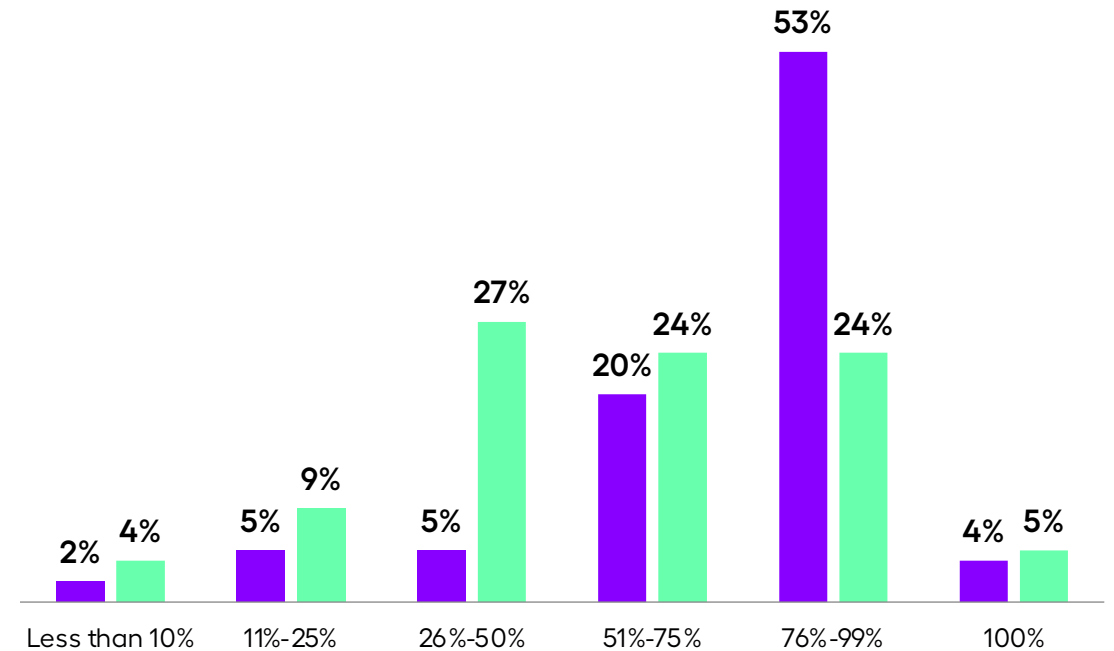
Nearly a third stated that their organization's data is less than 76% accurate

Only 57% of their organization's data is being used to make intelligent business decisions



What percent of your organization's data is...?

■ Accurate
 ■ Currently being used to make intelligent business decisions



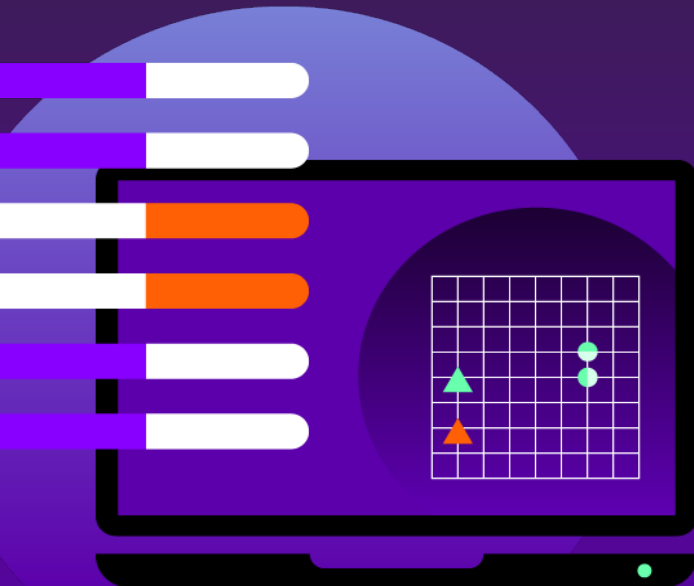
Unsure/Don't know (11% & 7%), not shown
 Base: Total Respondents; n = 55

Executive leadership is more likely to report having accurate data

80%
amongst those
in executive
leadership roles

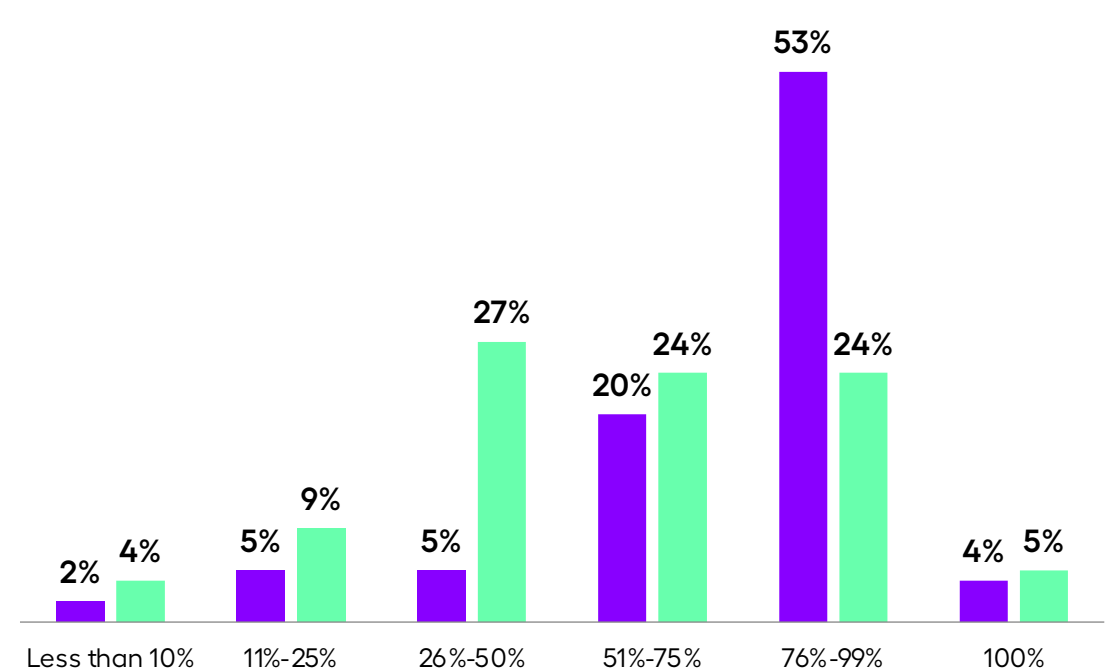
vs.

67%
amongst those
in IT, tech or
clinician roles



What percent of your organization's data is...?

■ Accurate ■ Currently being used to make intelligent business decisions



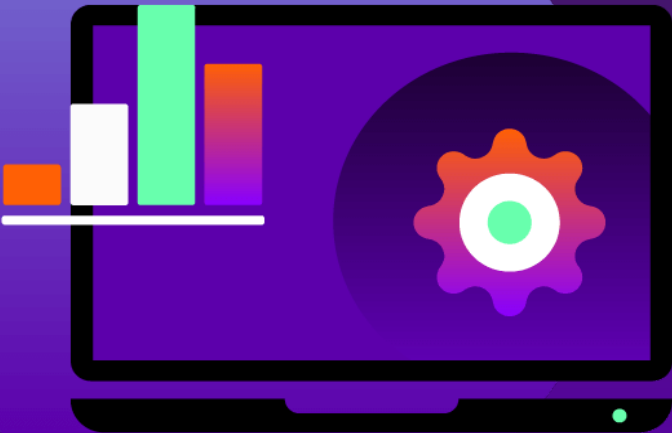
Unsure/Don't know (11% & 7%), not shown
Base: Total Respondents; n = 55

Larger organizations are more likely to report that their data is being used to make intelligent business decisions

64%
amongst IDNs/
Multi-hospitals



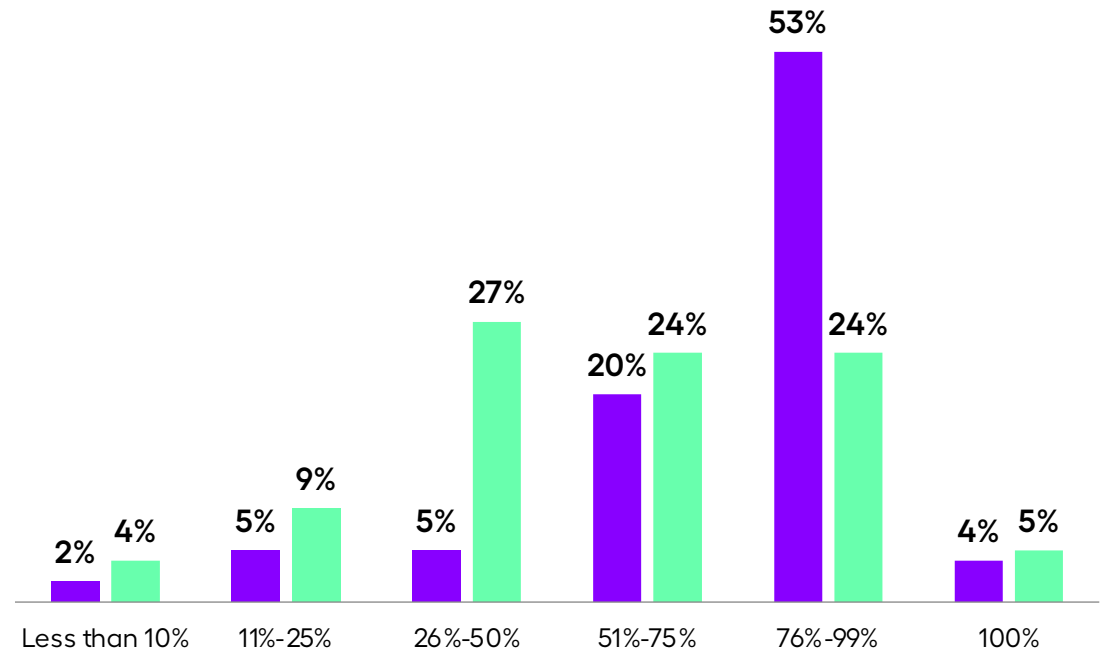
48%
amongst stand-alone/
specialty/AMCs*



*Small base sizes, insight is directional

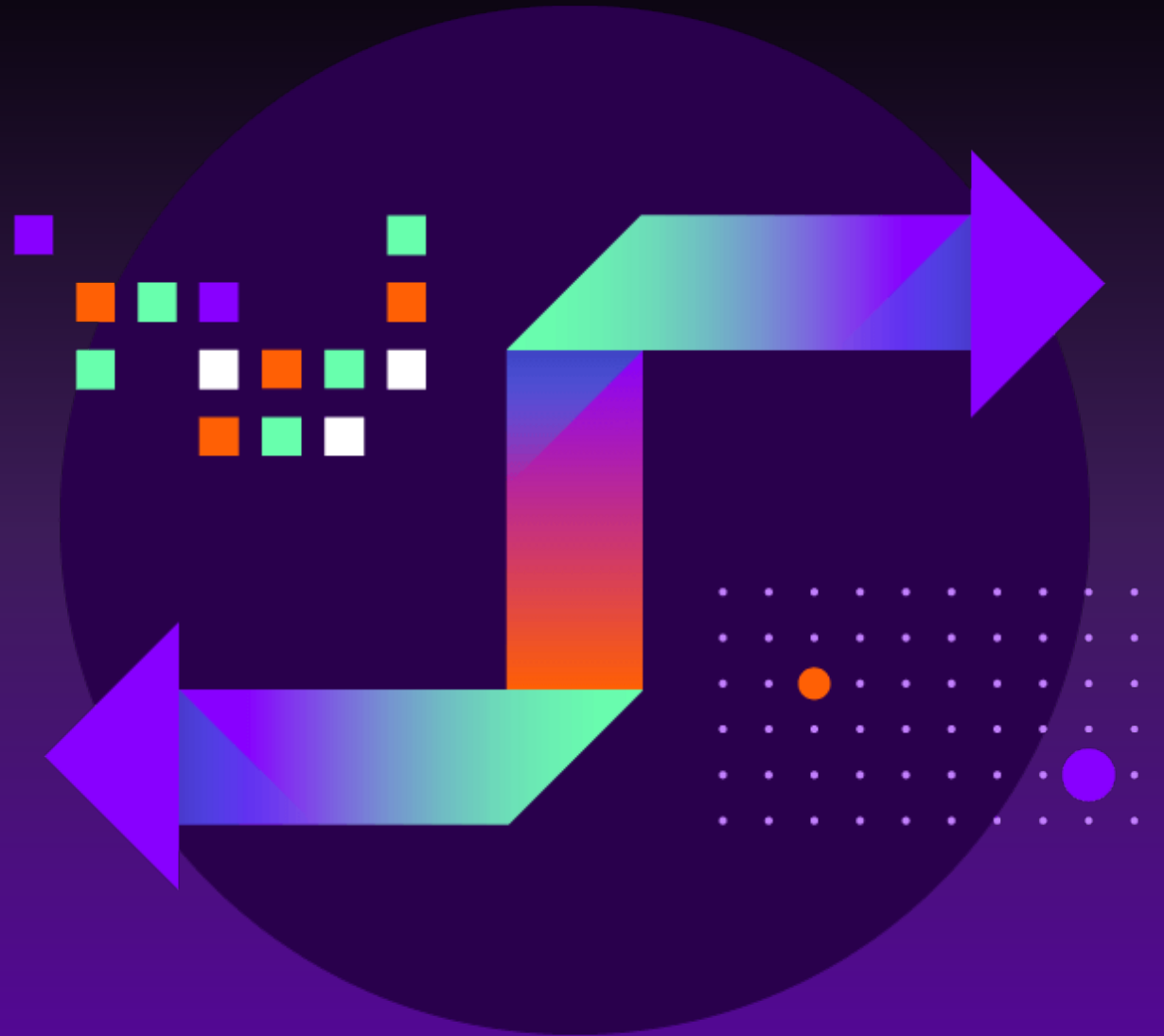
What percent of your organization's data is...?

■ Accurate ■ Currently being used to make intelligent business decisions



Unsure/Don't know (11% & 7%), not shown
Base: Total Respondents; n = 55

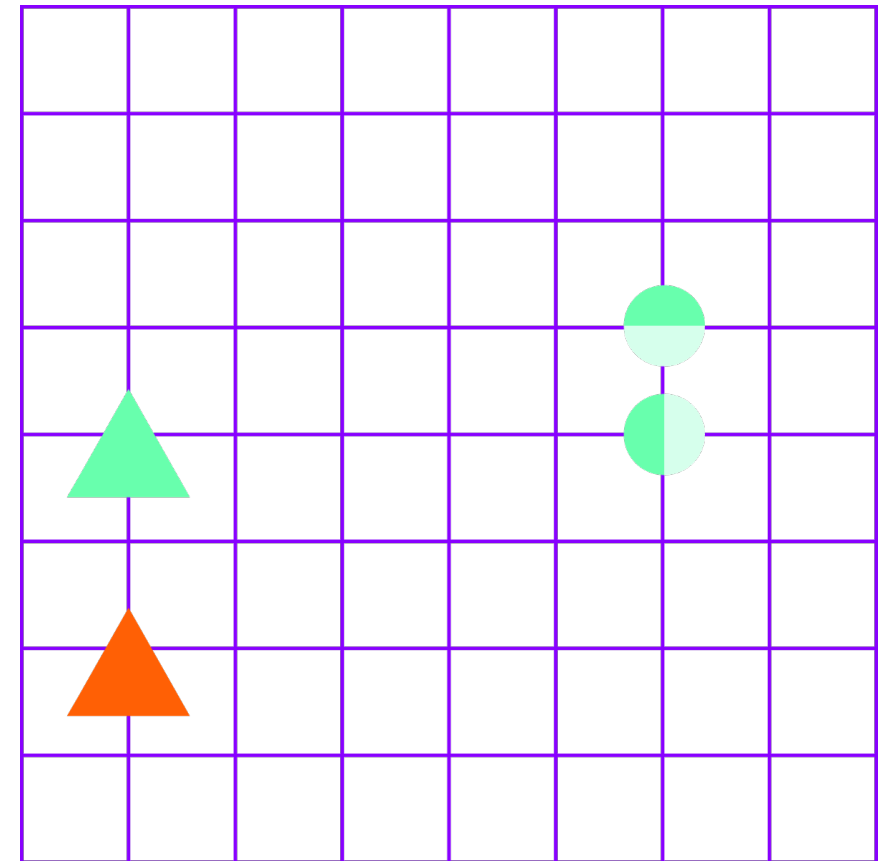
Research Methodology



Research Methodology

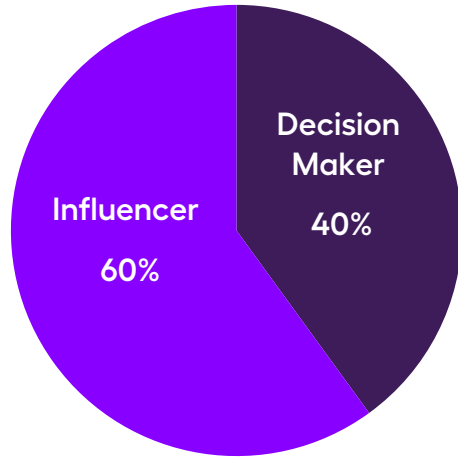
Methodology

- This research was conducted online in December 2022 to early January 2023 amongst executive, IT, technology, and clinical leaders in healthcare in the United States.
- Respondents were screened for having a role in decision making or influence regarding the selection of and/or the strategy/innovation of data analytics platforms at their organization.
- A total of 55 qualified respondents participated in this research.
- This was a blind data collection effort; Arcadia was not identified as a sponsor of the research.

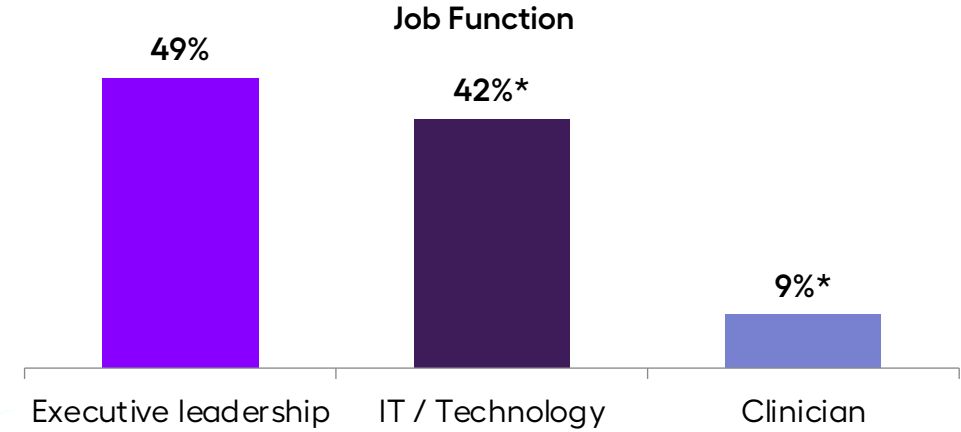


Respondent Profile

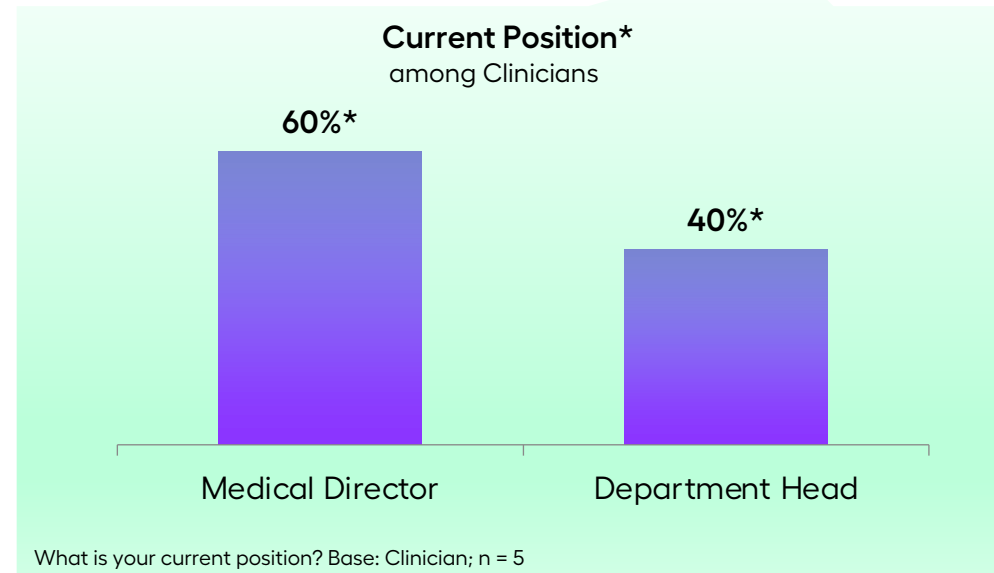
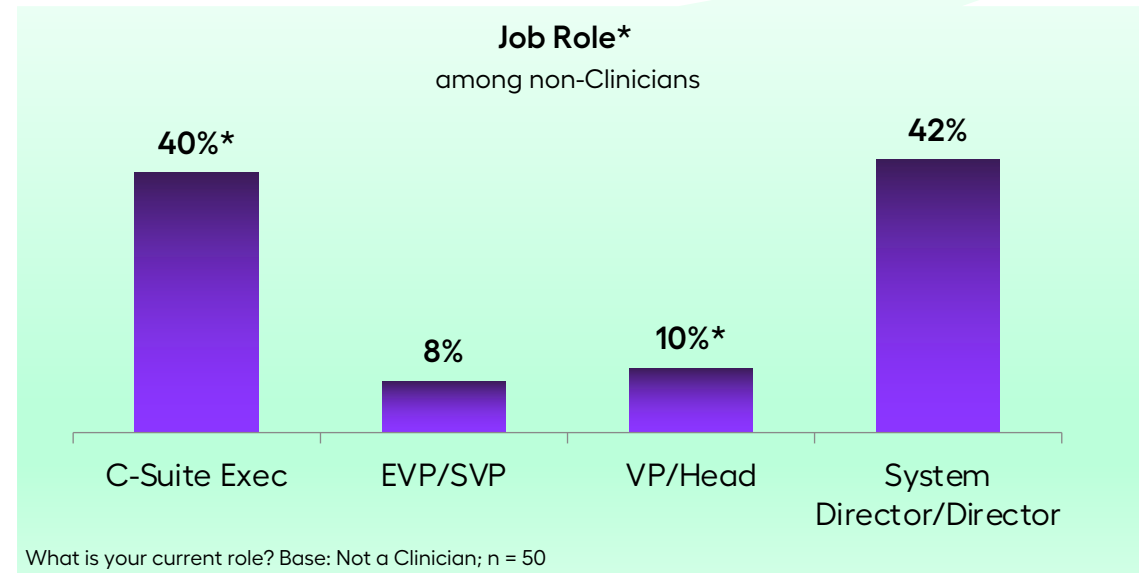
Role in Selection and/or Strategy/Innovation of Data Analytics Platforms



Which of the following best describes your role regarding the selection of and/or the strategy/innovation of data analytics platforms at your organization? Base: Total Respondents; n = 55

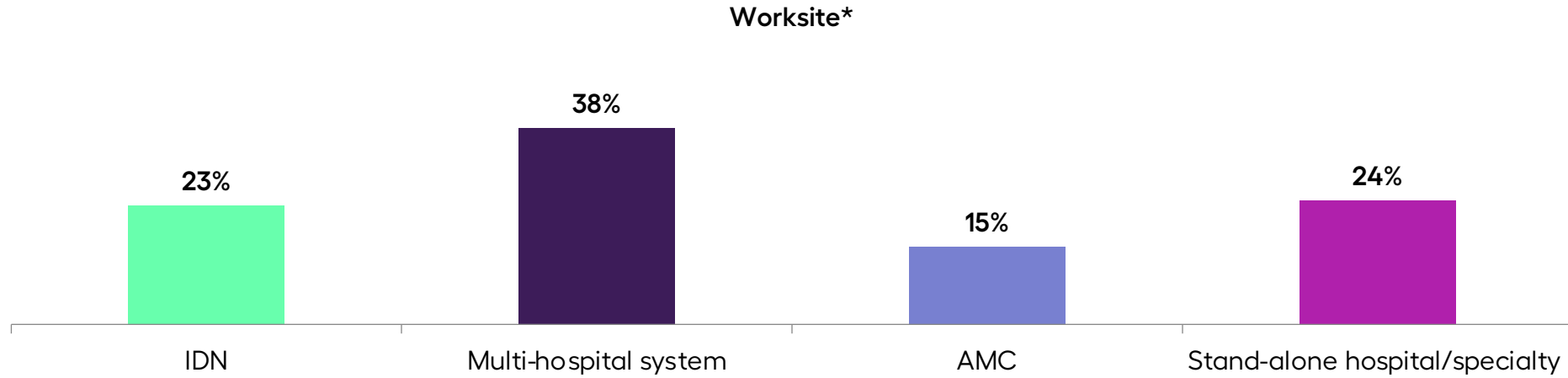


How would you characterize your job role or function? Base: Total Respondents; n = 55

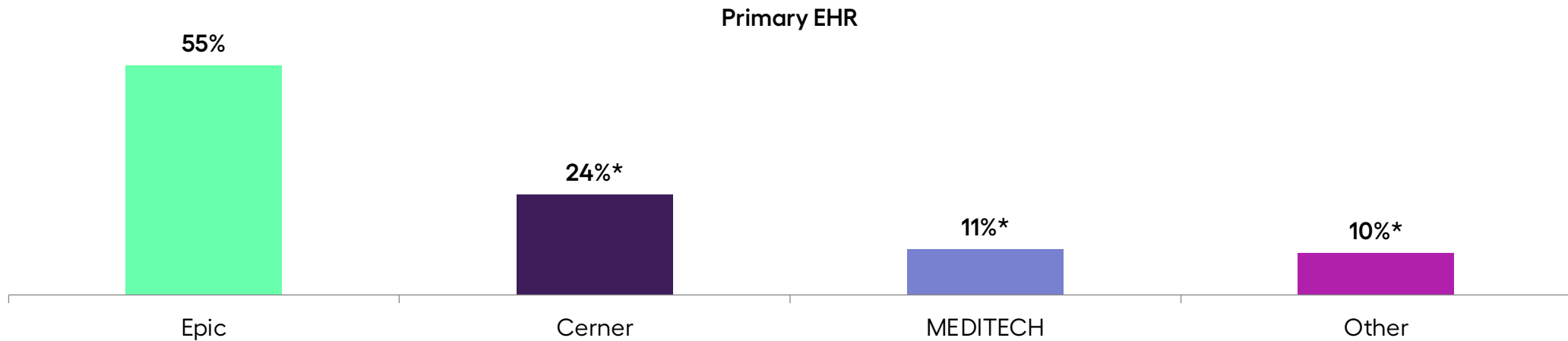


*Small base sizes, insight is directional

Organizational Profile



Which of the following best describes your worksite? Base: Total Respondents; n = 55

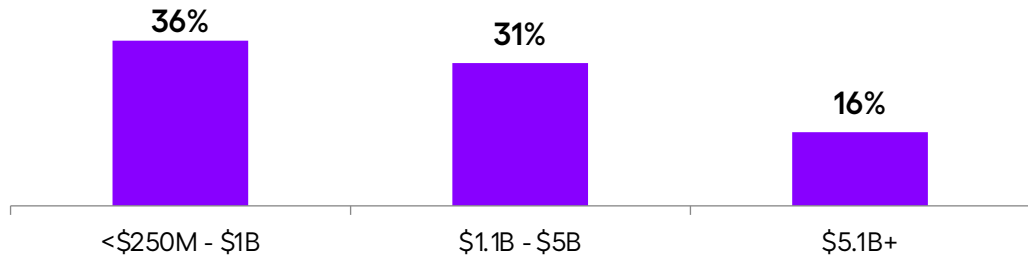


What is your organization's primary EHR (electronic health records) platform? Base: Total Respondents; n = 55
EHRs under 5% incidence & 'Other' (4%), not shown

*Small base sizes, insight is directional

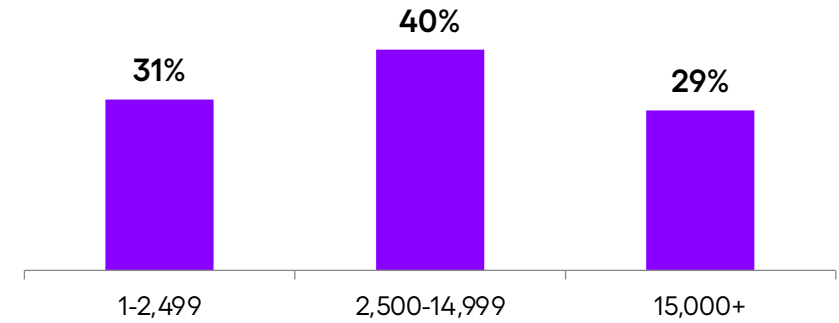
Organizational Profile

Annual Revenue*



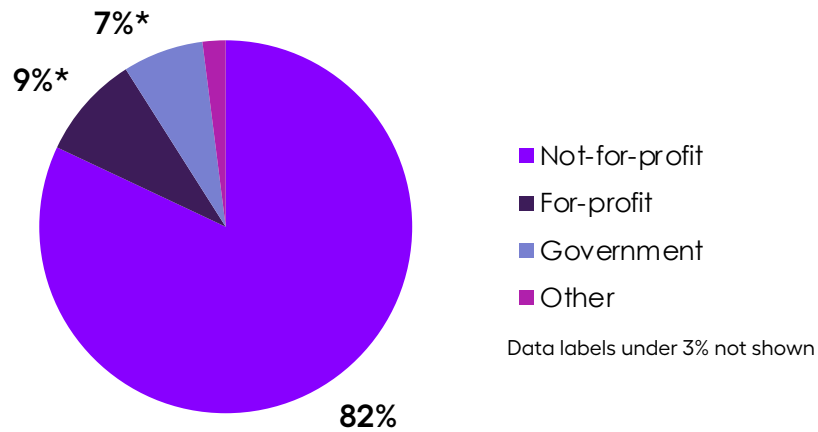
What is your organization's annual net revenue? Base: Total Respondents; n = 55
Don't know/Can't disclose 17%, not shown

Number of Employees*



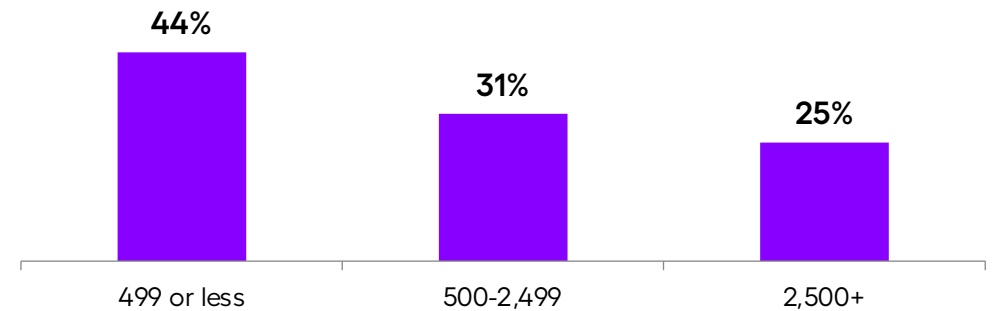
Please tell us the total number of employees in your organization. Base: Total Respondents; n = 55

Ownership



Which of the following best describes your health system/hospital ownership? Base: Total Respondents; n = 55

Hospital Beds*



Please tell us the total number of hospital beds in your organization. Base: Total Respondents; n = 55

*Small base sizes, insight is directional

Hear leaders from top healthcare organizations discuss these results at arcadia.io/bigdata



Arcadia is dedicated to happier, healthier days for all. We transform diverse data into a unified fabric for health. Our platform delivers actionable insights for our customers to advance care and research, drive strategic growth, and achieve financial success. For more information, visit arcadia.io.

© 2023 Arcadia Solutions, LLC

