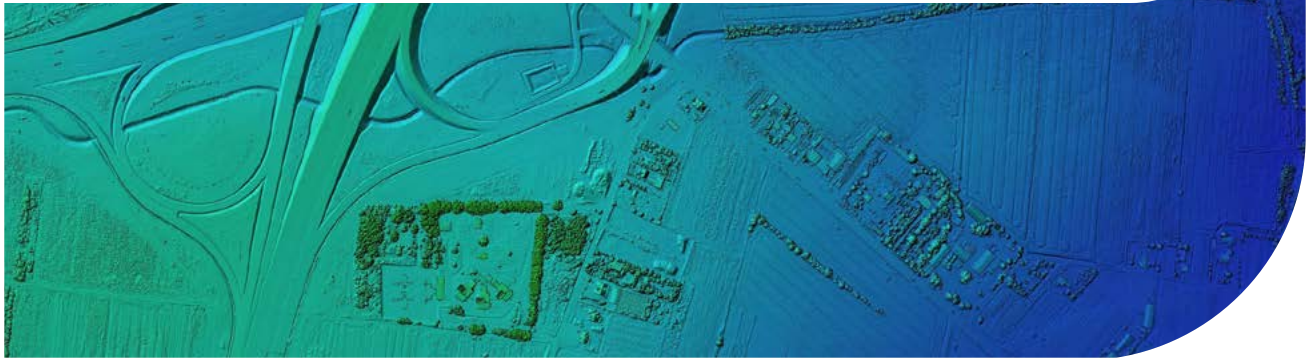


Site Acquisition for Electric Vehicle Charging Infrastructure



Space is at a premium as businesses and governments electrify their fleets and build electric vehicle (EV) charging infrastructure. The real estate market is competitive, and finding ideal sites means navigating stringent land use, environmental constraints, and power delivery requirements.

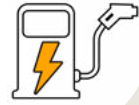
Black & Veatch removes siting obstacles through our unique capability to evaluate EV charging sites through a holistic project perspective. We apply our unsurpassed EV deployment experience, real-time digital siting tools, and in-house experts in environmental, land use, and engineering to locate and acquire optimal sites that support power delivery, charging equipment layout, and convenient, reliable end use.

Unsurpassed Knowledge

Black & Veatch has been a leader in EV charging engineering, permitting and construction since the very beginning. Our specialized land services and environmental team leads you through one of the most important aspects of EV charging development: selecting the site.

Several factors can dramatically increase schedule and cost, such as distance from the site to a substation or required upgrades along the site distribution circuit to provide adequate power. Whether you're charging a fleet for a large company or a small town, we understand siting requirements of depot charging, on-route, shared, and destination/endpoint charging, either alone or in combination.





Why Black & Veatch?

300+

dedicated
environmental
professionals

1,000

real-time GIS
data sources
for accurate site
analyses anywhere
in the world

140+

siting & feasibility
studies

2,266

EV charging sites
across 49 states
and 6 countries

2 GW

of charging
capacity engaged

Data-Driven Site Selection & Acquisition

As your organization plans for EV charging infrastructure, you may quickly realize that finding ideal sites is difficult in this competitive real estate market. Your project may stall as you struggle to find available locations near power supply that can accommodate charging equipment and support convenient use.

Black & Veatch removes siting obstacles by tapping digital tools, such as our Geographic Information System (GIS) automated software that uses over 1,000 real-time data sources for heightened accuracy and detail. We craft client-specific site searches and characterize site environmental suitability and economic, permitting, and engineering feasibility to ensure timely, cost-efficient construction and optimal end use. We analyze and produce:

- Features that could restrict development & operation
 - Major roads
 - Floodways
 - Parcel size
- Candidate, alternative, & final candidate site evaluation
- Property owner due diligence
- Fatal flaw analysis
- Siting & feasibility studies
- Siting reports (for lease & entitlement efforts or alternative analysis)

Essential, Expert In-House Collaboration

Our team dedicates environmental, land services, engineering, and EV professionals to your project. You will benefit from our unique capability to evaluate EV charging sites through a holistic project perspective.

Black & Veatch's in-house specialists determine site suitability by evaluating site design and construction techniques, geotechnical aspects, drainage, and floodways. We also provide other services, such as cut/fill estimates and field engineering. Together, we help you stay ahead of the site selection and acquisition curve through our industry-leading expertise in:

- Site & design engineering, including civil, mechanical, & electrical engineers
- Real estate
- Land use & permitting
- Physical and biological sciences, including wetland, habitat, & cultural resources specialists
- Environmental law
- Renewable energy & energy storage integration
- Power delivery planning
- EV charging facility planning, engineering, & construction
- GIS mapping

Learn more

