

WINDOW WORLD
ARCHITECTURAL COLLECTION



Wood Clad Windows and Patio Doors

FEATURING  **WINDSOR**
WINDOWS & DOORS

Window
World





BREATHE NEW LIFE INTO YOUR HOME

Congratulations on reaching the decision to replace your home's windows and doors! The enhanced beauty and efficiency from window and door replacement will help you enjoy your home again...for many years to come. This one remodeling step will not only help breathe new life into your home's décor, it's also a great investment, because replacing your windows and doors is one of the best steps you can take to help increase your home's energy efficiency and overall value.

Now that you've decided to replace your windows, just leave the rest to Window World. As a market leader in replacement solutions for remodeling and renovation, we offer a breadth of products to meet your needs, your lifestyle and your budget. In addition, Window World's over 25 years of installing top-quality windows and doors is testimony to the expertise and experience we will offer your project.

BENEFITS OF WINDOW REPLACEMENT

YOU'LL WONDER WHY YOU WAITED SO LONG!



An investment that adds value.

New windows can improve energy efficiency, reduce noise pollution, enhance curb appeal, and increase the overall value of your home.

Helps reduce your monthly energy costs.

You'll save on your heating and cooling bills if older double-pane windows are replaced with energy efficient windows with Low-E coatings.*

*Source: Efficient Windows Collaborative



Helps increase home safety and security.

Windows that operate smoothly and lock properly are vital to your home's security and your peace of mind.



Eliminates worries about fade damage.

Low-E glass coatings help block the sun's UV rays - protecting your furniture, carpet and window treatments from fading.



Keeps you more comfortable.

Eliminate those chilly drafts, cold floors or hot, stuffy bedrooms caused by inefficient, old windows, and every spot in your home will be your favorite place to be.





Cuts outside noise.

New windows can help block annoying noise – so you can relax in a quieter, more peaceful indoor environment.



Creates a home you'll love.

According to the “2022 Remodeling Impact Report,” homeowners gave their window replacement project a Joy Score of 9.6 – a rating based on being happy or satisfied with their remodeling, with 10 being the highest rating.*

*Source: National Association of REALTORS® and the National Association of the Remodeling Industry (NARI)



Makes cleaning easier.

Most new windows are built with easy-clean features that allow you to wash the outside glass from inside your home – no ladders to climb!

Improves your home's beauty inside and out.

Replacement windows give you two design benefits for the price of one – they add curb appeal and enhance your home's interior style.



THE WONDERS OF WOOD

STRENGTH AND BEAUTY SHINE THROUGH IN OUR PRODUCTS

Match the craftsmanship of your home's interior trim with our wood clad option. The powder-coated extruded aluminum exterior is extremely durable – withstanding the harshest weather conditions – while the wood construction complements your home's interior.

Aluminum cladding refers to the covering on the exterior of a window and door unit. The aluminum covers the entire exterior of the window or door, protecting the product from the outside elements and reducing the amount of maintenance required. We use only heavy-duty .050 extruded aluminum cladding, versus thin roll form aluminum. It is sturdier and more resistant to exterior damage, including dents and chips. Aluminum cladding is available in a wide variety of colors, including custom color matching, and does not need to be painted.

On the interior of a window or door unit, you can enjoy the strength and beauty of natural wood. Windsor offers a variety of interior wood species including Clear Select Pine, Natural Alder and Douglas Fir so you can choose the option that best complements your home's decor.



“We love the way our replacement windows coordinate with our woodwork and floors – they look like they’re original to the house.”

WOOD CLAD

Heavy-duty aluminum exterior
+ the beauty of natural wood
on the interior



[1] PREMIUM WOOD CONSTRUCTION Natural wood serves as one of the most energy efficient materials available. Windsor uses only the finest wood interiors of Clear Select Pine, Natural Alder or Douglas Fir.

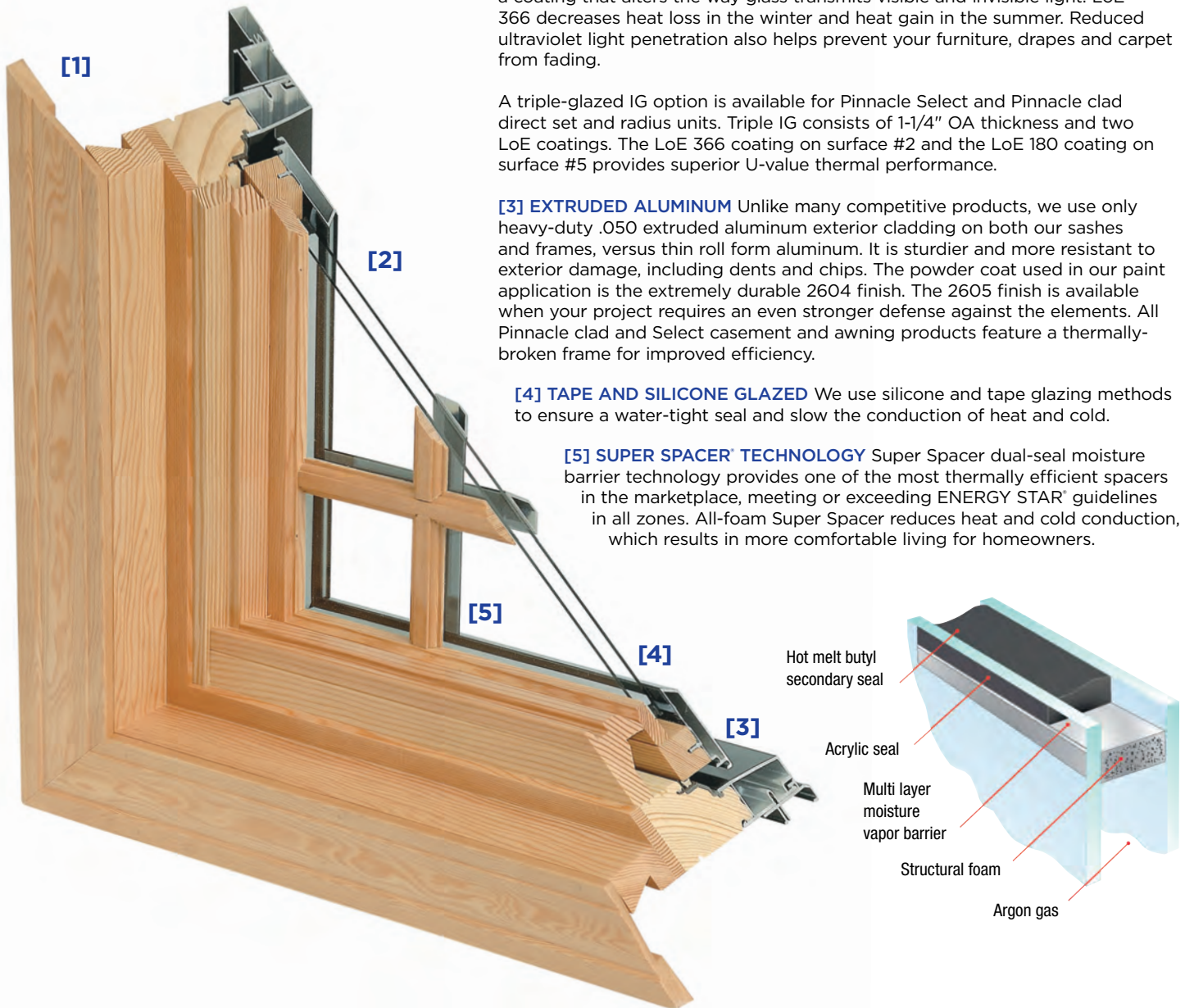
[2] CARDINAL® LOE 366 GLASS Windsor products feature LoE 366 glass with a coating that alters the way glass transmits visible and invisible light. LoE 366 decreases heat loss in the winter and heat gain in the summer. Reduced ultraviolet light penetration also helps prevent your furniture, drapes and carpet from fading.

A triple-glazed IG option is available for Pinnacle Select and Pinnacle clad direct set and radius units. Triple IG consists of 1-1/4" OA thickness and two LoE coatings. The LoE 366 coating on surface #2 and the LoE 180 coating on surface #5 provides superior U-value thermal performance.

[3] EXTRUDED ALUMINUM Unlike many competitive products, we use only heavy-duty .050 extruded aluminum exterior cladding on both our sashes and frames, versus thin roll form aluminum. It is sturdier and more resistant to exterior damage, including dents and chips. The powder coat used in our paint application is the extremely durable 2604 finish. The 2605 finish is available when your project requires an even stronger defense against the elements. All Pinnacle clad and Select casement and awning products feature a thermally-broken frame for improved efficiency.

[4] TAPE AND SILICONE GLAZED We use silicone and tape glazing methods to ensure a water-tight seal and slow the conduction of heat and cold.

[5] SUPER SPACER® TECHNOLOGY Super Spacer dual-seal moisture barrier technology provides one of the most thermally efficient spacers in the marketplace, meeting or exceeding ENERGY STAR® guidelines in all zones. All-foam Super Spacer reduces heat and cold conduction, which results in more comfortable living for homeowners.



REPLACEMENT OPTIONS

REVIVE BY WINDSOR WINDOWS & DOORS POCKET REPLACEMENT WINDOW

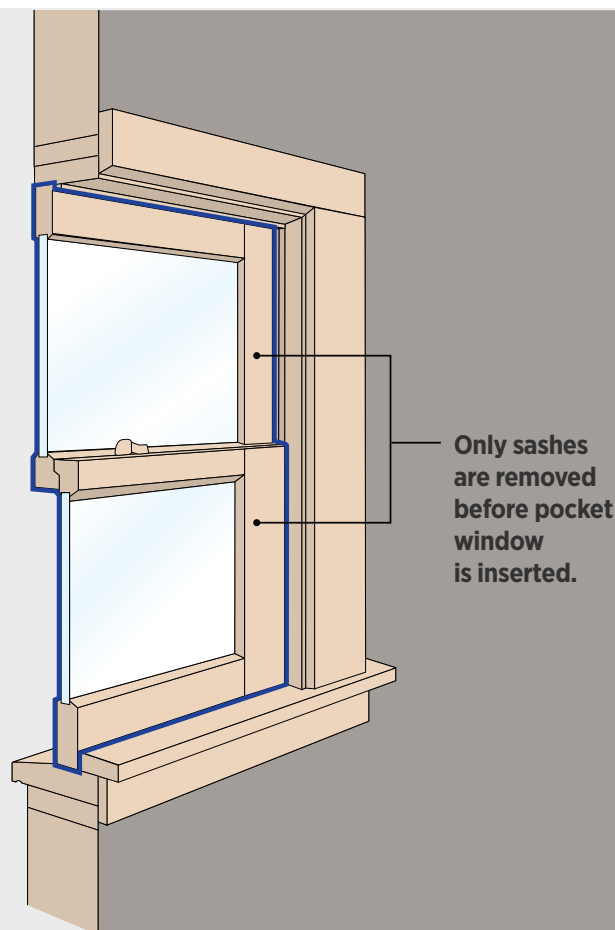
Designed for convenience, ease of operation and energy efficiency, Windsor's REVIVE Pocket Replacement Windows make replacement quick and easy. This product line offers faster, less-complicated installations while preserving your home's design details assuring a precise fit.

How it's done:

Only the existing window sashes are removed. Then, the replacement window is installed into the existing window frame, resulting in a slightly smaller glass area.

Why choose this type of window replacement:

- Your home's interior trim, paint, plaster or wallpaper, and exterior siding, stucco or brickwork, are typically not disturbed - that means no extra costs to repair or replace them.
- Your window is built to order in the size you need for a precise fit.
- Easy installation - pocket replacement windows are quick and minimally invasive to install from the inside or the outside of your home.



Pocket Double-hung



Pocket Casement/Awning

PINNACLE BY WINDSOR WINDOWS & DOORS FULL FRAME REPLACEMENT WINDOW

If your home is showing significant rot or deterioration to the exterior wood components of the window openings, your window replacement will most likely involve a complete frame tear out. The extent of construction for this replacement is similar to that for window installation in new home construction.

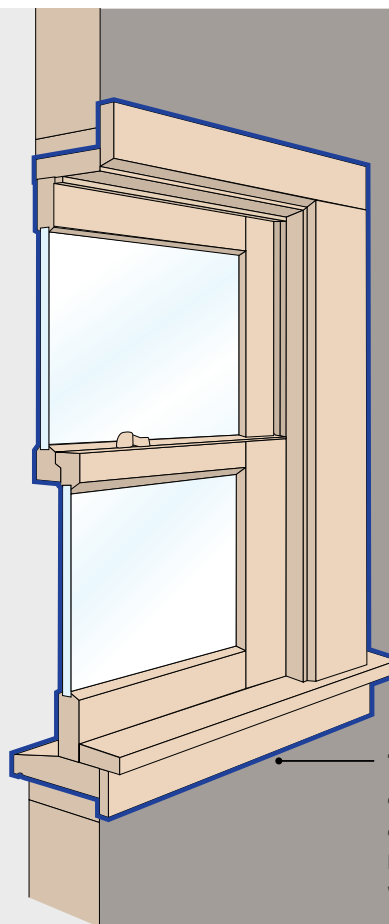
In this remodel, the entire window is removed, including exterior trim and windowsills, as well as interior window trim, leaving only the rough opening. Because of additional materials and labor required in a complete frame tear out, the cost will be more than that of a standard pocket style replacement. However, the results bring many benefits, including upgraded materials with more weather tested options, and more visible glass.

How it's done:

The entire existing window is removed (sashes, frame and trim).

Why choose this type of window replacement:

- Your existing window frame is damaged.
- You want to change the window style or size of your window opening.



The entire window and trim (interior and exterior) are removed before new window is installed.



Full Frame Double-hung



Full Frame Casement/Awning



All remodeling and replacement options offer a wide variety of design options.

WINDOWS



CASEMENT & TRUE AWNING

Ventilation: 100%

Operation: Outward swing

Casement windows feature one sash that is hinged on the vertical side and swings outward. Awning windows swing outward, with one sash hinged at the top. They are a popular choice where reach might be an issue and are often placed above or below other windows and doors for additional ventilation. They open and close with the turn of one easy-to-reach handle, which is located on the bottom of the window frame.

FEATURE	BENEFIT
Extruded aluminum cladding	Holds up in the toughest weather conditions
Corners screwed, silicone injected and keyed	Ensures the highest quality product every time
Narrow sitelines	Provides maximum viewing area
Many hardware finishes and grille options	Fits a range of projects, from historic to modern
Single lever lock with multiple or single locking points	Provides tight seals for energy efficiency





DOUBLE-HUNG

Ventilation: 50% max

Operation: Slides along tracks vertically

Double-hung windows have two operating sashes: one on the top that slides down and one on the bottom that slides up. An advantage to double-hung windows is their ability to adjust ventilation from being totally open (50% max) to reducing air flow to a small opening. They also have an EZ Tilt option, which allows both sashes to tilt in from the top for easy cleaning.

FEATURE	BENEFIT
Extruded aluminum cladding	Holds up in the toughest weather conditions
Recessed locks and keepers	Keeps views unobstructed
EZ Tilt operation	Enables quick, easy cleaning and removal of sash
Block and tackle balances	Provides easy operation time after time



WINDOWS



DIRECT SET, RADIUS, & PICTURE

Ventilation: 0%
Operation: None

Fixed/direct set units do not operate. These windows are available in a wide range of sizes and shapes, including rectangles, trapezoids, octagons, half rounds, full rounds, round top windows, etc.

FEATURE	BENEFIT
Extruded aluminum cladding	Holds up in the toughest weather conditions
Geometric shapes: Triangles, rectangles, trapezoids, octagons and many others	Offers multiple choices for virtually limitless design creativity and product application
Radius shapes: Half rounds, extended half rounds, equal/unequal leg arch, circles, ovals and many others	Low profile option available in radius and direct set





PATIO DOORS



SLIDING

Sleek design and smooth operation - that's just the beginning of Pinnacle clad sliding doors. Choose from narrow or French options, one to four panels and a gray or bronze finish sill to customize just the right look for your home. These doors glide effortlessly on two end adjustable tandem steel ball bearing rollers. And, the heavy-duty weatherstripping ensures your patio doors will be ready for the changing seasons.

Because the door slides, sliding patio doors are helpful in maximizing tight spaces. This makes a sliding patio door perfect for bedrooms, kitchens, balconies and many other spaces in your home.

FEATURE	BENEFIT
Available in both traditional French panel and contemporary narrow panel	Allows you to customize the door based on your style and desired functionality
Configurations from 1 to 4 panels	
Contemporary or traditional handle set in 10 finishes	Allows you to match any interior design
Multi-slide patio doors with 2 to 8 panels configured as stacking, pocket and bi-parting: French or Narrow	Enhances view and expands indoor living space





SWINGING

If you're looking for options, look no further than Windsor's Pinnacle swinging patio doors. Whether you prefer in-swing or out-swing models, one or two operational panels, traditional or contemporary styling, you can design Windsor's Pinnacle clad swinging doors to fit your style. The design options continue with up to 50 different exterior clad colors and finishes, several hardware styles, multiple hardware finishes and numerous grille options.



FEATURE	BENEFIT
Both in-swing and out-swing styles with full lite, half lite and ¾ lite options	Provides choice of customization options
Available in both traditional French panel and contemporary narrow panel	
Configuration from 1 to 4 panels	
Traditional and contemporary handle sets in 10 finishes	Matches any interior design

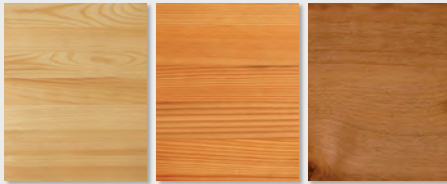


FINISHES AND COLORS

Windsor's in-house powder paint application can help you make a statement with your windows and doors. Choose from over 50 shades in our standard and feature color palettes, or make it truly unique with custom color matching or our matte finish colors. All paints are protected with the highly durable 2604¹ finish, or you can upgrade to 2605² for even stronger defense against the elements.³

INTERIOR FINISHES

Interior Wood Species



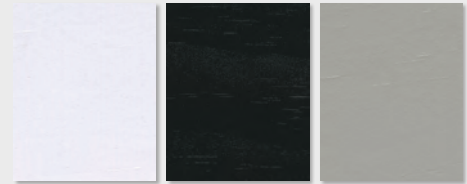
Clear Select Pine Douglas Fir Natural Alder

Interior Primed Finishes



White Primed Black Primed
(Available in Clear Select Pine only)

Prefinished Painted Interiors



Painted White Painted Black Painted Gray

Prefinished Stained Interiors

CLEAR COAT AND STAIN SAMPLES ARE SHOWN ON CLEAR SELECT PINE AND REPRESENT OPTIONS AVAILABLE. ACTUAL FINISH MAY VARY.



Clear Sunlight Provincial Tea with Milk Antique Barrel Perfect Brown Intensive Chestnut Espresso



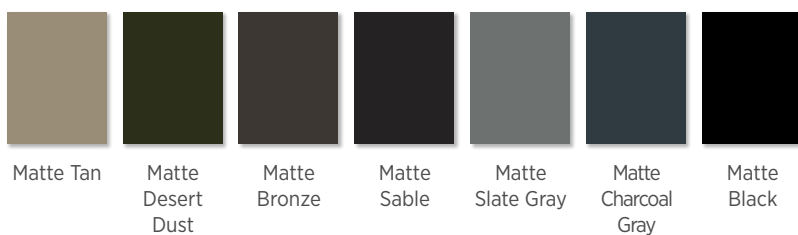
STANDARD CLAD COLORS Available in 2604 and 2605 finish.



FEATURE CLAD COLORS Available in 2604 and 2605 finish. Custom color matching is also available.



MATTE CLAD COLORS Available in the 2604 finish only.



¹AAMA 2604 finish backed by a 20-year warranty. ²AAMA 2605 finish backed by a 30-year warranty. ³For applications within one mile of the coast, AAMA 2605 finish will carry a 10-year warranty and AAMA 2604 will carry no warranty. For specific warranty details, please refer to the complete warranty document posted on our website, www.windsorwindows.com.

NOTE: Printing limitations prevent exact color/finish representation. See your Window World Design Consultant for actual samples.

INTERIOR AND EXTERIOR TRIM

INTERIOR TRIM

Custom-fitted wood trim is available in Clear Select Pine.



WM 327 • 2-1/4"



WM 356 • 2-1/4"



WM 366 • 2-1/4"



WM 351 • 2-1/2"



WM 361 • 2-1/2"



WM 445 • 3-1/4"



WM 444 • 3-1/2"



RB 03 • 3-1/2"



WM 473 • 2-1/4"



WM 433 • 3-1/4"



WM 412 • 3-1/2"

STOOL AND APRON

Only available in double or single hung windows



WM 1021 • 5-1/4"



B 200 • 11/16" x 2-1/2"

BASE SHOE AND COVE



WM 100 • 11/16" x 11/16"



WM 129 • 7/16" x 11/16"



WM 106 • 11/16" x 11/16"

INTERIOR STOPS



830 8U • 1/2" x 1/2"



WM 254 • 1/2" x 3/4"



WM 267 • 1/4" x 1-5/6"



WM 876 • 7/16" x 1-3/8"



WM 941 • 7/16" x 3/4"



WM 937 • 7/16" x 1-1/4"



WM 887 • 7/16" x 1-1/4"

ROSETTES



Rosette • 2-3/4"



Rosette • 3-3/4"

EXTERIOR TRIM

Clad Exterior Casing Options



WM 180
Brickmould



WM 180 Solid
Back Brickmould



Williamsburg



3-1/2"
Flat



3/8"
Subsill



1-1/4" Subsill



2-1/4"
Subsill



Traditional Flush Fin
(Casement/awning with
3-1/4" frame only)



Contemporary Flush Fin
(Casement/awning with
3-1/4" frame only)

GRILLES

All of our wood Windsor Divided Lite bars are hand-fitted to ensure a perfect fit.



7/8" & 1-1/4"
Perimeter Grille



3/4" & 1"
Profiled Inner Grille



13/16" Flat Inner Grille
(Not available on
Select)



7/8" & 1-1/4"
Exterior Clad Ogee
Windsor Divided Lite



7/8" & 1-1/4"
Exterior CPVC Ogee
Windsor Divided Lite
(Primed only)



5/8", 7/8", 1-1/4" & 2"
Tall Putty
Windsor Divided Lite



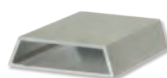
5/8", 7/8", 1-1/4" & 2"
Short Putty
Windsor Divided Lite



5/8", 7/8", 1-1/4" & 2"
Short Tall and Short
Contemporary
Windsor Divided Lite



5/8", 7/8", 1-1/4" & 2"
Tall Interior
Contemporary
Windsor Divided Lite



2" Tall Putty
Simulated Check Rail



2" Exterior Low Profile
Simulated Check Rail



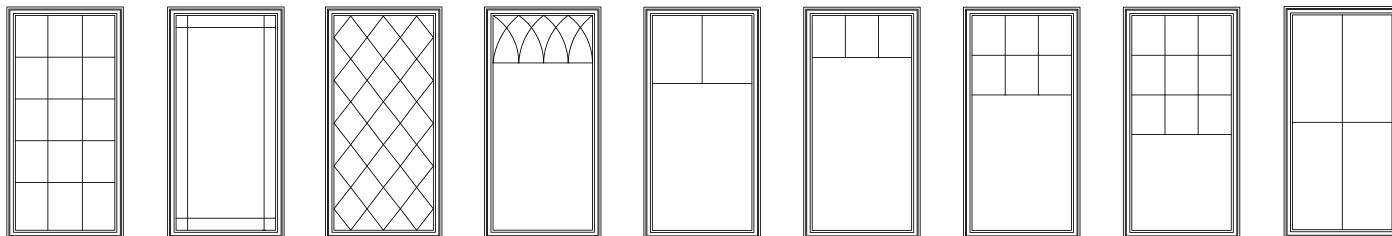
2" CPVC Simulated
Check Rail (Primed
only)



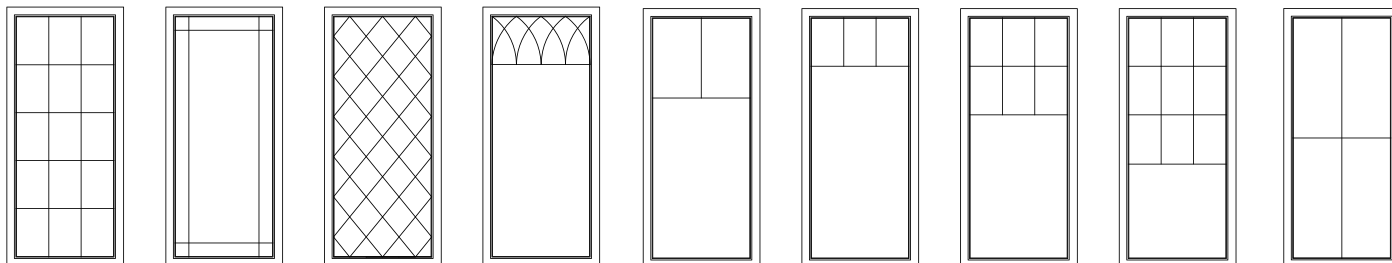
3-3/8"
Simulated Mid Rail

GRILLE PATTERNS Some grille patterns are not available in all configurations and products.

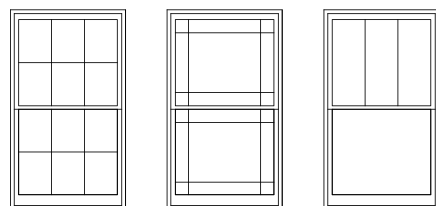
Patio Door Grille Patterns



Casement and Awning Grille Patterns



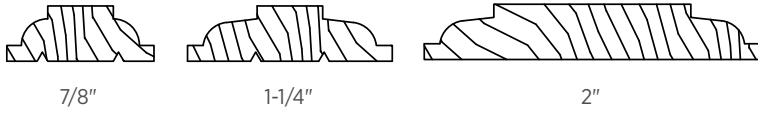
Double-hung Grille Patterns



Custom grille patterns available.

GRILLE PROFILES

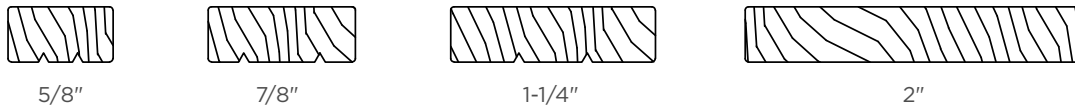
Interior Grilles - Ogee



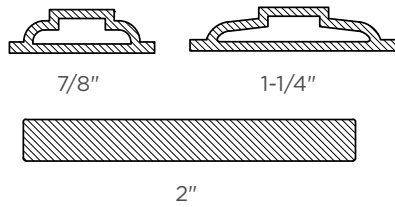
Interior Grilles - Putty



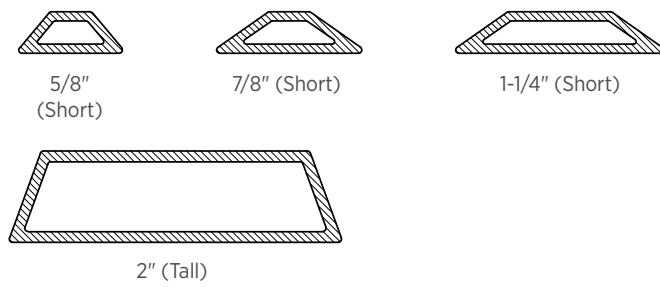
Interior Grilles - Contemporary



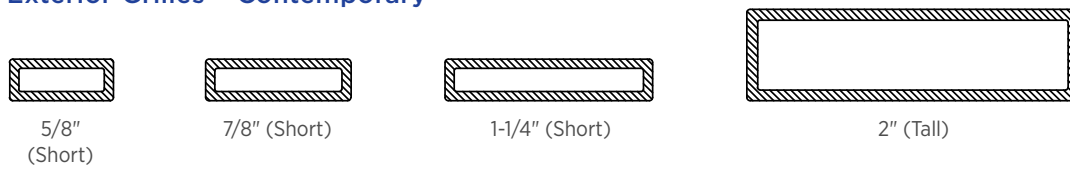
Exterior Grilles - Ogee



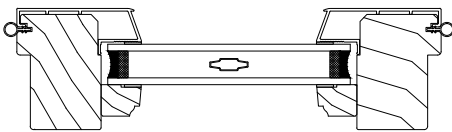
Exterior Grilles - Putty



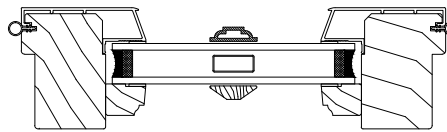
Exterior Grilles - Contemporary



GRILLE SECTIONS



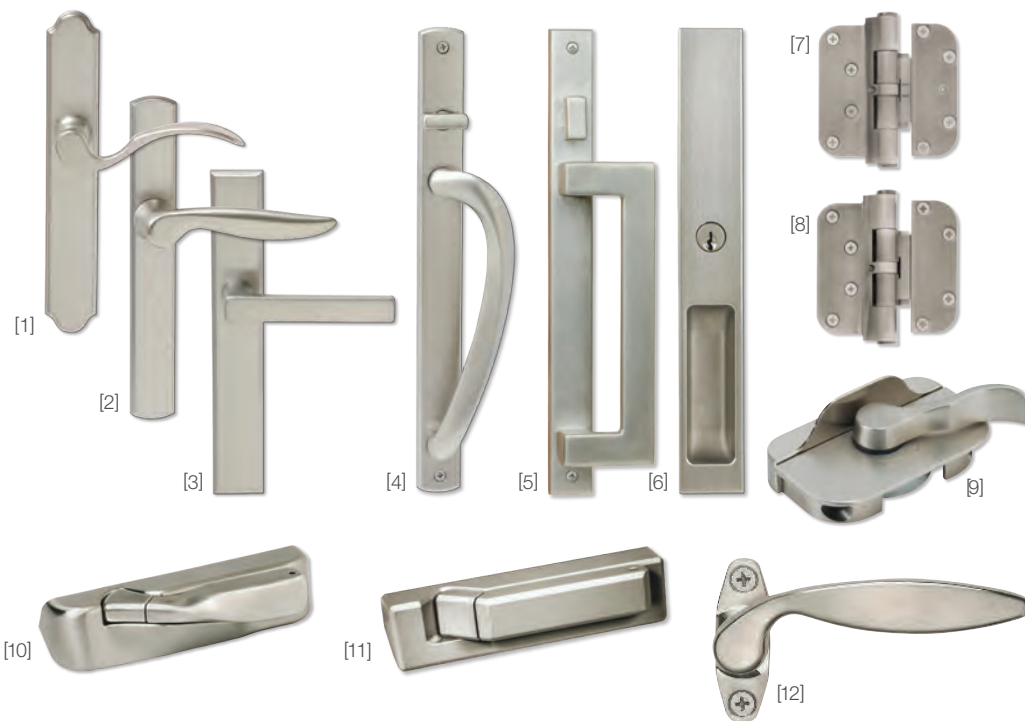
Standard Select IG with Inner Grille



Standard Select IG with WDL and Inner Bar

HARDWARE

PATIO DOOR HANDLES, HINGES AND WINDOW HARDWARE Finishes marked with asterisks* feature a clear coating that protects the finish against tarnish and peeling. This process extends the rich, bright life of the finish and dramatically delays the aging process. (Photos show Satin Nickel finish.) Bi-fold doors are available with the contemporary swinging handle in Satin Nickel, Brass and Oil Rubbed Bronze.



PATIO DOOR HANDLE STYLES

Available in all 10 door handle finishes, unless noted.

- [1] Classic Swinging Door Handle
- [2] Contemporary Swinging Door Handle
- [3] Euro Swinging Door Handle
Only available in Satin Nickel and Black door handle finishes.
- [4] Contemporary Sliding Door Handle
- [5] Euro Sliding Door Handle
Not available in antique nickel.
- [6] Flush Mount Sliding Door Handle
Only available in Satin Nickel, Faux Bronze, Oil Rubbed Bronze and Black door handle finishes.

SWINGING PATIO DOOR HINGES

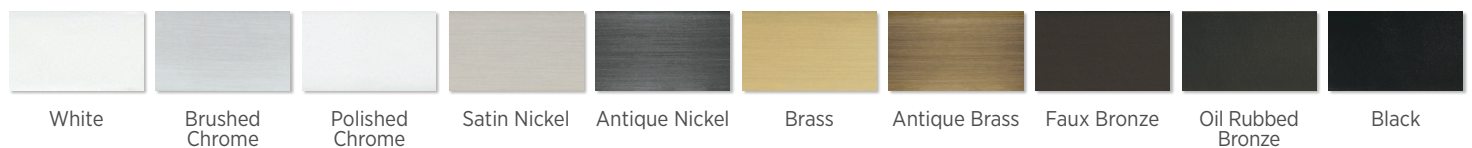
Available in all 10 door handle finishes.

- [7] Adjustable Guide Hinge
- [8] Adjustable Set Hinge

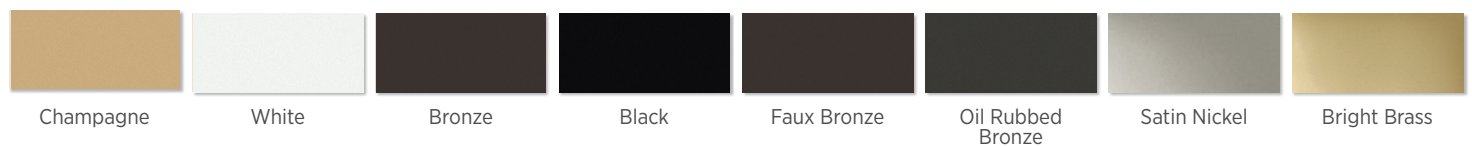
WINDOW HARDWARE STYLES

- [9] Double-hung Lock
Available in all eight window hardware finishes.
- [10] Traditional Casement/Awning Crank
Available with matching lock in all eight window hardware finishes.
- [11] Contemporary Casement/Awning Crank
Available with matching lock in all eight window hardware finishes.
- [12] Push-out Lever
Available in White, Black, Faux Bronze, Oil Rubbed Bronze and Satin Nickel window hardware finishes.

PATIO DOOR HANDLE AND HINGE FINISHES



WINDOW HARDWARE FINISHES



ENJOY YOUR INVESTMENT
FOR A LIFETIME*

Windsor Windows & Doors is proud to announce **WinSure Wood Treat** – the ultimate in window and door protection.

This new wood treat is exclusive to Windsor Windows & Doors and is custom blended to provide superior protection against wood rot caused by fungal decay and termite damage. With a limited lifetime warranty, WinSure is guaranteed to provide structural peace of mind for years to come. Limited lifetime warranty applies to pine products.



Wood Clad Parts and Wood Components Warranty*

Windsor Product	Species	Warranty Term		Coverage	Transferable from Original Date of Manufacture	
		Single Family	Multi-Family / LC		Single Family	Multi-Family / LC
Pinnacle Clad Windows and Doors Pinnacle Select Windows Only and Revive Clad, Revive Clad Sash Replacement Kit	WinSure Pine	Limited Lifetime	10 Years	Wood rot caused by fungal decay and termite damage	20 Years	Not Transferable
	Fir and Alder	10 Years	10 Years	Wood rot caused by fungal decay	10 Years	Not Transferable
Pinnacle Prime Windows and Doors	Pine	10 Years	10 Years	Wood rot caused by fungal decay	10 Years	Not Transferable
Pinnacle Select Doors Only	Pine and Fir	10 Years	10 Years	Wood rot caused by fungal decay	10 Years	Not Transferable

*See Pinnacle and Revive warranties for further details



Window World®

1-800 **WINDOWWORLD** | **WindowWorld.com**



©2024 Window World International, LLC. (International). Window World®, the Window World logo, and SolarZone® are registered trademarks, 'Improving Homes. Changing Lives.™' is a registered service mark, and AMERICA'S EXTERIOR REMODELER® is a service mark of International. Usage of all the referenced marks is limited to authorized licensees of International or franchisees of Window World, Inc., International's authorized licensee. Colors are reproduced by lithographic process and may vary slightly from colors of actual product. Printed in USA. WN-WWI-001 9/24

WINDSOR WINDOWS & DOORS | A WOODGRAIN COMPANY

©2024 Woodgrain Millwork Inc. Woodgrain Millwork, Windsor, the Windsor Lion logo, Next Dimension and Legend are registered trademarks of Woodgrain Millwork Inc. Windsor Windows & Doors, Pinnacle, Revive and Redstone are trademarks of Woodgrain Millwork Inc. ©2024. Images and illustrations are owned by or have been licensed for use by Windsor Windows & Doors.