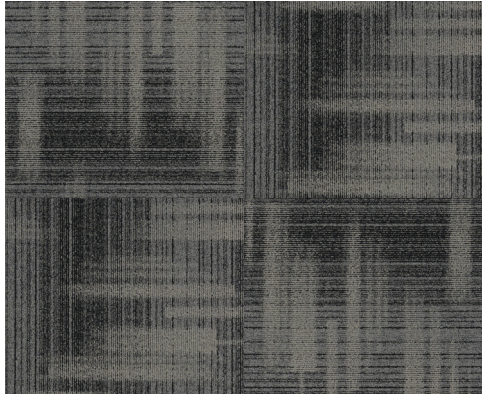


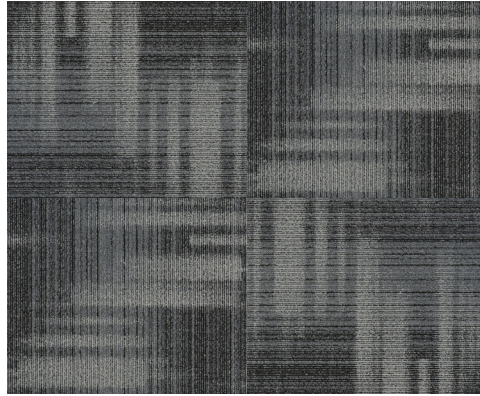
BANDWIDTH



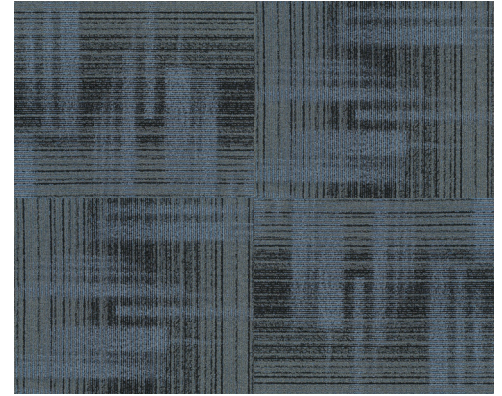
18 OZ COMMERCIAL CARPET TILE



NE883011 | **Ancient Root**



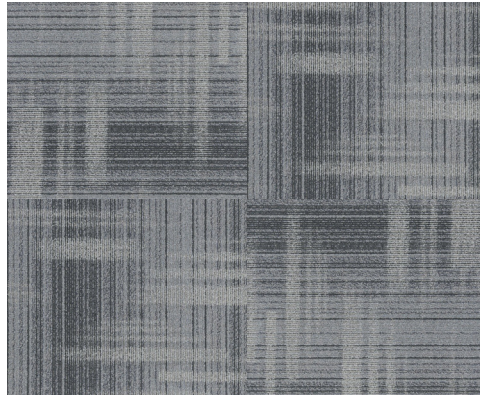
NE883010 | **Eclipse**



NE883014 | **Commodore Blue**



NE883008 | **Meteorite**



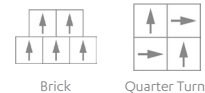
NE883007 | **Silver Lining**

SPECIFICATIONS

Weight	18 oz, Dense 1/12th Gauge
Fiber Content	Twisted, Solution Dyed Nylon Heavy PVC Free Bitumen Backing
Dimensions	19.7" Wide x 19.7" Long Tile
Installation	Follow CRI Carpet Installation Guidelines
Recommended Adhesive	Taylor Versatile or Dynamic, SprayLock 6500, Or install with Next Floor's Nextabs (NENEXTABS)
Recommended Cleaner	Fresh Floors
Warranty	Lifetime Commercial Stain Resistance, Backing Performance, Wear

INSTALLATION FAST FACTS

- Follow CRI Carpet Installation Standards and Guidelines
- Inspect new flooring prior to installation
- Always work from several boxes
- Clean up spills immediately
- Use floor protection for furniture
- Installation Options:



Brick

Quarter Turn

Read Complete Instructions Before Installing



tasflooring.com

ADDITIONAL INFO
WARRANTY
INSTALLATION & MAINTENANCE

