

DEVELOPMENT



18 OZ, 100% SOLUTION DYED POLYPROPYLENE

Construction	PVC Free, Four Layers: Non-Woven Primary Layer Advanced Polymer Pre-Coat Modified Bitumen Core Polyester Felt Back
Tile Dimensions	19.7" x 19.7", 50 cm x 50 cm
Weight	18 oz, 610 g/m ²
Gauge	1/12"
Density oz/yd ³	5500 oz
Packaging	20 tiles/carton - 32 carton/pallet

Installation & Maintenance

Glue Down Adhesive: Taylor Versatile or Dynamic, SprayLock 6500, or *install with Next Floor's Nextabs (NENEXTABS)*

Follow CRI Carpet Installation Guidelines

Test Method & Requirements

Usage Classification	33 (EN1307)	
Flammability	ASTM E648	Class I
Static	AATCC134	<2 kV

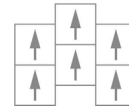
Health & Environmental

CRI Green Label Plus # GLP1215
100% PVC Free
Up to 20% Pre-Consumer Recycled Content

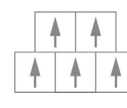
Warranty

Lifetime Commercial
Stain Resistance, Backing Performance, Wear

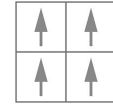
Layout Options:



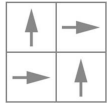
Ashlar



Brick



Monolithic



Quarter Turn

Installation Fast Facts

Follow CRI Carpet Installation Standards and Guidelines
Inspect new flooring prior to installation
Always work from several boxes
Clean up spills immediately
Use floor protection for furniture
Read complete instructions before installing



tasflooring.com

Additional Info
Warranty
Installation & Maintenance

