




LAVA

Stone-embossed rubber surface with glossy speckles.



TILES

24 in x 24 in
(61 cm x 61 cm)



ROLLS

6 ft 2 in x 32 ft 9 in
(1.9 m x 10 m)



THICKNESS

0.118 in
(3 mm)



WEIGHT

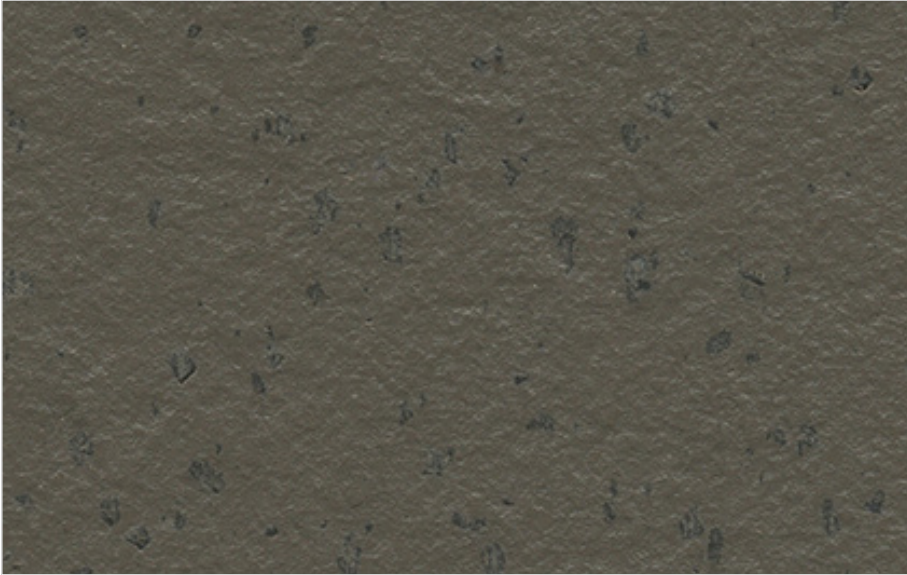
~0.96 lb/ft²
(~4.7 kg/m²)



L15 Hekla



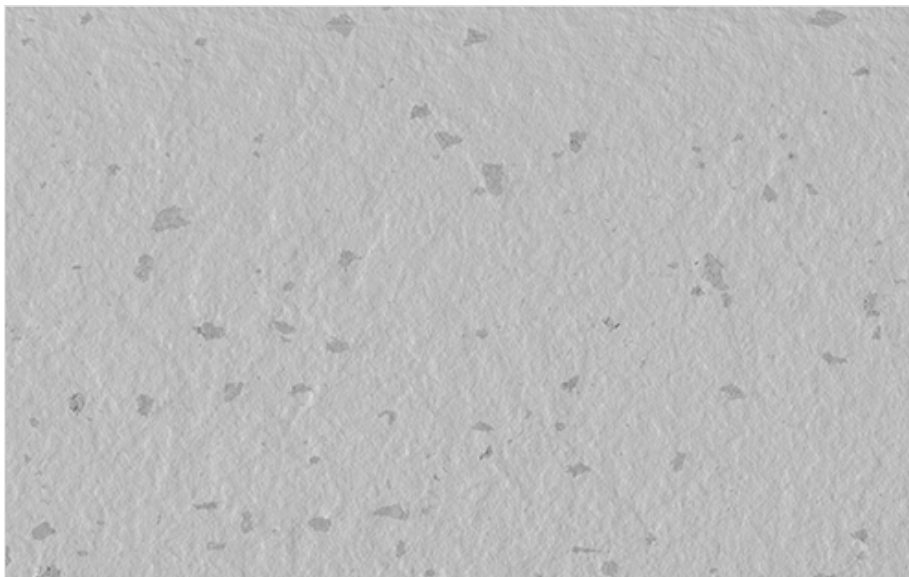
L19 Kronotsky



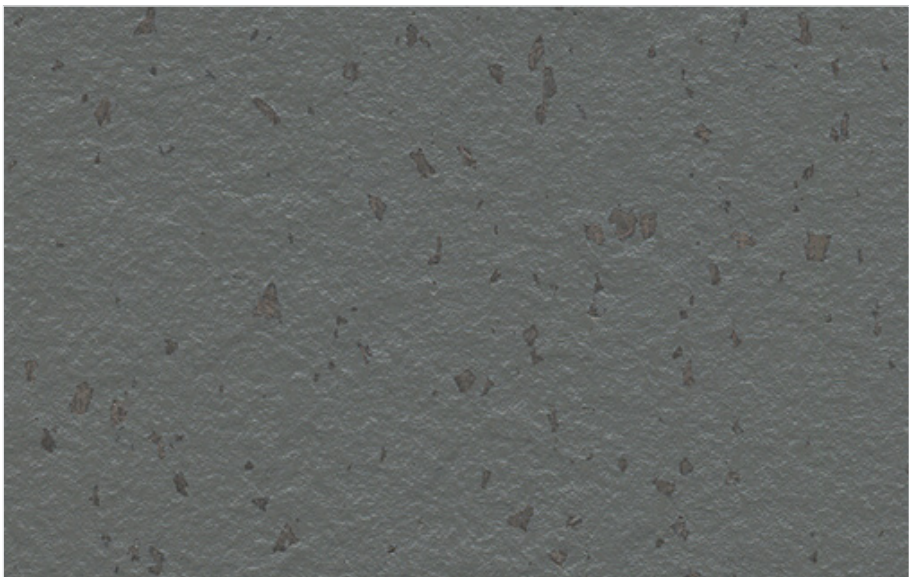
L02 Teide



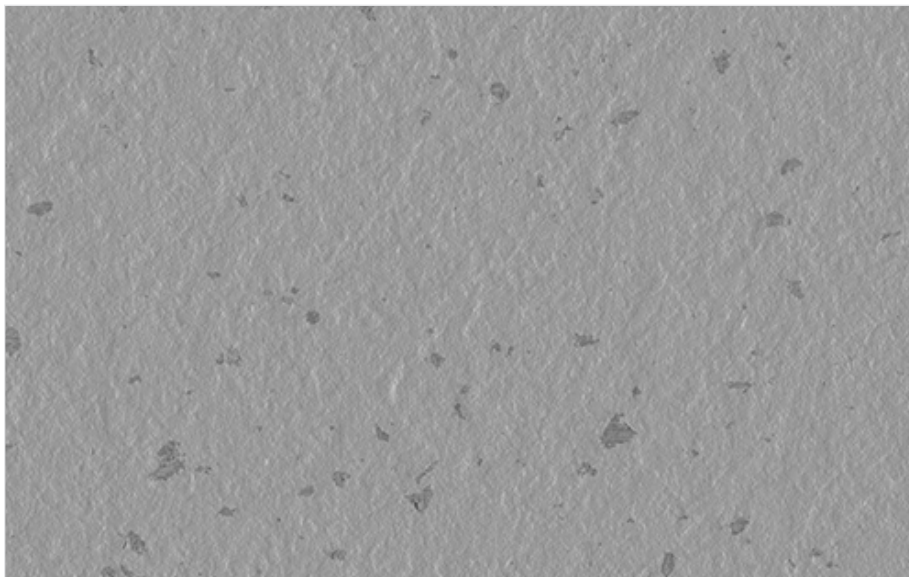
L03 Vesuvio



L16 Erebus



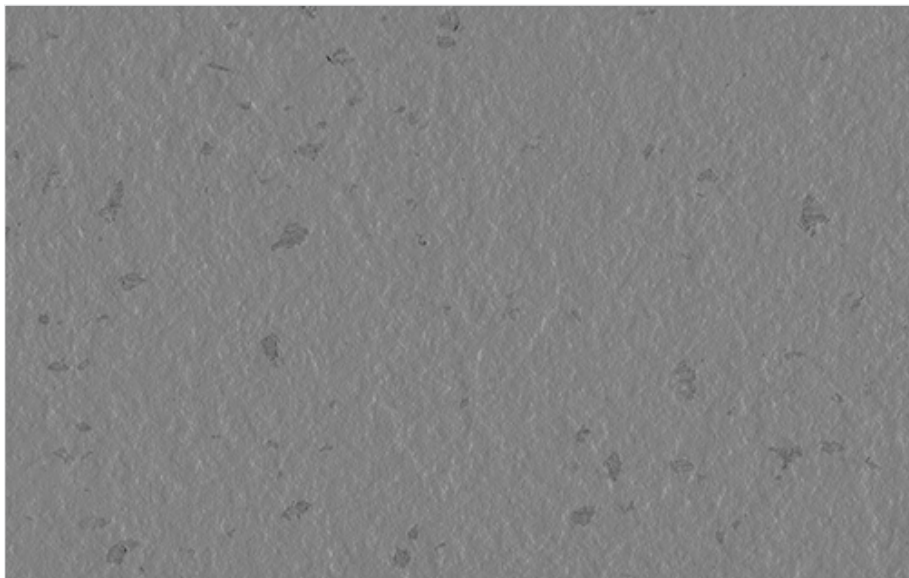
L06 Fuji



L17 Sajama



L01 Merapi



L18 Meru



L05 Etna

Performance Criterion	Test Method	Requirement*	Result**
Indoor Air Quality - CA Section 01350	CDPH v1.2-2017	-	Compliant
Indoor Air Quality - Greenguard Gold	UL 2821/UL 2818	-	Compliant
Modulus at 10% Elongation	ASTM D412	≥ 300 psi	386.37 psi
Static Coefficient of Friction (Neolite, Dry)	ASTM D2047	≥ 0.50	≥ 0.85
Durometer Hardness (Shore A)	ASTM D2240	≥ 85	90
Abrasion Resistance (H18 Wheel, 1000 g, 1000 Cycles)	ASTM D3389	≤ 1.0 g	0.54 g
Impact Sound Transmission Reduction	ASTM E2179	-	≈ 15 dB (ΔIIC)
Critical Radiant Flux	ASTM E648	≥ 0.45 W/cm² (Class 1)	≥ 0.45 W/cm² (Class 1)
Optical Density of Smoke	ASTM E662	≤ 450	≤ 450
Chemical Resistance ***	ASTM F925	≤ Slight Change	Compliant
Static Loading (Tested at 250 psi)	ASTM F970	≤ 0.005 in	0.000 in
Static Loading (Tested at 800 psi)	ASTM F970	-	0.004 in
Heat Resistance	ASTM F1514	ΔE ≤ 8.0	Compliant
Light Resistance	ASTM F1515	ΔE ≤ 8.0	Compliant
Tile Size	ASTM F2055	± 0.45 mm	Compliant
Tile Squareness	ASTM F2055	≤ 0.254 mm	Compliant
Dimensional Stability of Tile	ASTM F2199	≤ 0.15 %	Compliant
Resistance to Fungi	ASTM G21	-	No Growth

*Manufactured product is only required to meet the minimum listed requirement in the Requirement column.

**Reported result listed in the Result column from manufacturing controls and/or third-party testing can vary between production lots, laboratories, methods and/or equipment, and as such do not constitute representations or warranties as to any particular production lot. Mondo reserves the right to modify product design and/or specifications at any time without notice.

***For the complete list of chemicals tested, concentrations and contact time, please communicate with Mondo's Technical Department.

