

LEVELS

GLUE DOWN 2.5 MM, 20 MIL
LOOSE LAY 5.0 MM, 20 MIL

T A S
CONTRACT

TASCONTRACT.COM

LEVELS

GLUE DOWN 2.5 MM, 20 MIL | LOOSE LAY 5.0 MM, 20 MIL



SHIELD TECHNOLOGY

The Levels 2.5 mm and 5.0 mm Collections are enhanced with EnduraGuard Shield, a cutting-edge, eco-friendly matte finish that offers exceptional scratch resistance to withstand heavy pedestrian traffic while keeping the effects of wear and tear or abrasion to a minimum. The 20 mil commercial wear layer offers superior durability.



VERSATILE

The choice is yours when it comes to the installation method and thickness desired for these clean and rustic wood visuals; offered in both a 2.5 mm glue down, as well as a 5.0 mm loose lay construction. Both options are suitable for commercial spaces.



SUSTAINABLE INNOVATION

Levels 5.0 mm reduces carbon usage by 114% with the Bio-Circular Balanced PVC (BCBP), a sustainable raw material produced by using discarded resources, such as waste cooking oil, compared to conventional materials. This material is ISCC PLUS certified, and is 100% recyclable.



EFFORTLESS INSTALLATION

Experience the ease of our "No Stick, No Click, Just Lay" installation method. The stabilizing fiber glass sheet and non-skid backing combine to provide a proven worry-free loose lay solution, and the 5 mm tile thickness allows for a seamless transition to carpet tile.

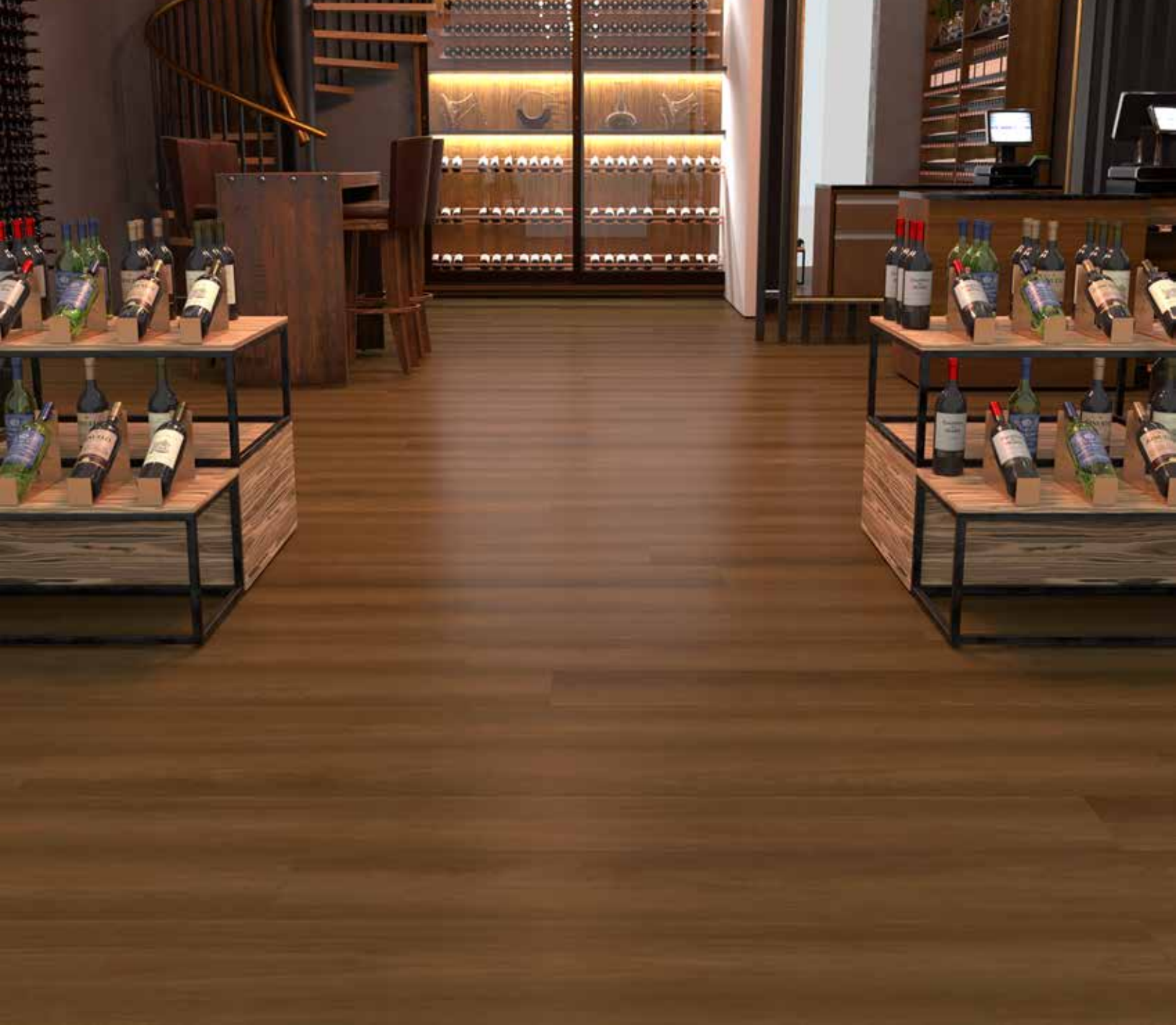
QNose Stair Nosing is made from the same product as your flooring selection, ensuring it will match your installed floors.





TRUE
LUXURY VINYL

NOLV252002 | NOLL52002
2.5 MM | 20 MIL | 5.0 MM | 20 MIL



HORIZON
LUXURY VINYL

NOLV252004 | NOLL52004
2.5 MM | 20 MIL | 5.0 MM | 20 MIL



BALANCE
LUXURY VINYL

NOLV252003 | NOLL52003
2.5 MM | 20 MIL | 5.0 MM | 20 MIL



EVEN
LUXURY VINYL

NOLV252001 | NOLL52001
2.5 MM | 20 MIL | 5.0 MM | 20 MIL



GRADE
LUXURY VINYL

NOLV252005 | NOLL52005
2.5 MM | 20 MIL | 5.0 MM | 20 MIL



UNIFORM
LUXURY VINYL

NOLV252006 | NOLL52006
2.5 MM | 20 MIL | 5.0 MM | 20 MIL



ABOVE
LUXURY VINYL

NOLV252007 | NOLL52007
2.5 MM | 20 MIL | 5.0 MM | 20 MIL



BELOW
LUXURY VINYL

NOLV252008 | NOLL52008
2.5 MM | 20 MIL | 5.0 MM | 20 MIL



PLANE
LUXURY VINYL

NOLL520T1
5.0 MM | 20 MIL



ALIGN
LUXURY VINYL

NOLL520T2
5.0 MM | 20 MIL

LEVELS 2.5



GLUE DOWN | 2.5 MM, 20 MIL

Construction	Luxury Vinyl Tile
Classification	ASTM F1700, Class III, Type A
Dimensions	7" Wide x 48" Long, 177.8 mm x 1219.2 mm
Overall Thickness	2.5 mm
Wear Layer	20 mil
Finish Coat	EnduraGuard
Texture	Embossed
Edge Profile	Square Edge
Packaging	35 sf/ctn, 60 ctn/plt, 2100 sf/plt

Installation & Maintenance

Method: Glue Down

Ambient & Surface Temperature at Installation: 60 - 85 Degrees Fahrenheit

Maintenance: A neutral pH cleaner, such as TAS Flooring Fresh Floors

Recommended Adhesives: - Dynamic, Transitional Pressure Sensitive, firm set
- Pinnacle, Premium Transitional Pressure Sensitive, hard set

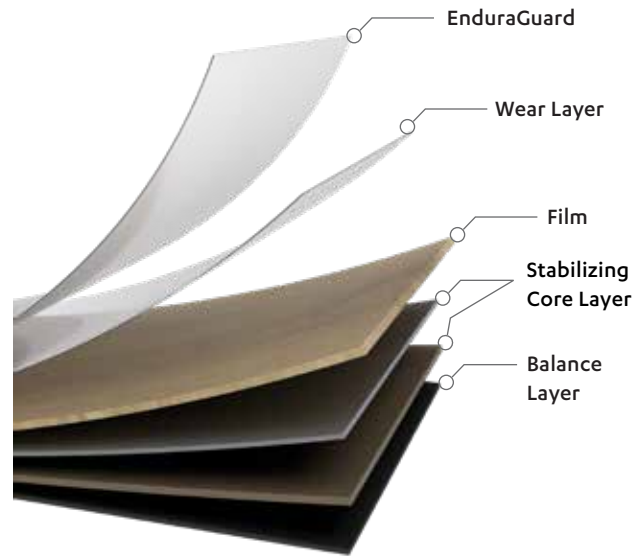
Test Method & Requirements

Flexibility	ASTM F137	Pass
Thickness (with Pad)	ASTM F386	Pass
Wear Layer Thickness	ASTM F410	Pass
Stain/Chemical Resistance	ASTM F925	Pass
Resistance to Heat Change	ASTM F1514	Pass
Resistance to Light Change	ASTM F1515	Pass
Residual Indentation	ASTM F1914	Pass
Size & Squareness	ASTM F2055	Pass
Dimensional Stability	ASTM F2199	Pass
Static Coefficient of Polished Surface	ASTM D2047	Exceeds
Flammability/Radiant Flux	ASTM E648	Class I
Static Load	ASTM E970	Pass>250 lbs
Peel Resistance	ISO 24345	Pass

*The flooring assembly dictates IIC, STC, HIIC, and Low IIC results; contact your representative for specific testing

Health & Environmental

FloorScore SCS Certified
Ortho-Phthalate



Warranty

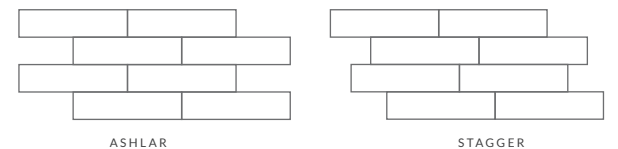
10 Year Commercial

Accessories

[QNose](#) Stair Nose

Layout Options:

NOT TO SCALE



LEVELS 5.0

LOOSE LAY | 5.0 MM, 20 MIL

Construction	Luxury Vinyl Tile
Classification	ASTM F1700, Class III, Type A
Dimensions	Plank: 9.25" Wide x 59.25" Long, 234 mm x 1505 mm Tile: 18" Wide x 36" Long, 457.2 mm x 914.4 mm
Overall Thickness	5.0 mm (including non-skid backing)
Wear Layer	20 mil
Finish Coat	EnduraGuard
Texture	Embossed
Edge Profile	Beveled
Packaging	Plank: 22.84 sf/ctn, 64 ctn/plt, 1,461.76 sf/plt Tile: 27 sf/ctn, 36 ctn/plt, 972 sf/plt

Installation & Maintenance

Method: Loose Lay

Ambient & Surface Temperature at Installation: 60 - 85 Degrees Fahrenheit

Maintenance: A neutral pH cleaner, such as TAS Flooring Fresh Floors

Recommended Adhesives: - Dynamic, Transitional Pressure Sensitive, firm set
- Pinnacle, Premium Transitional Pressure Sensitive, hard set

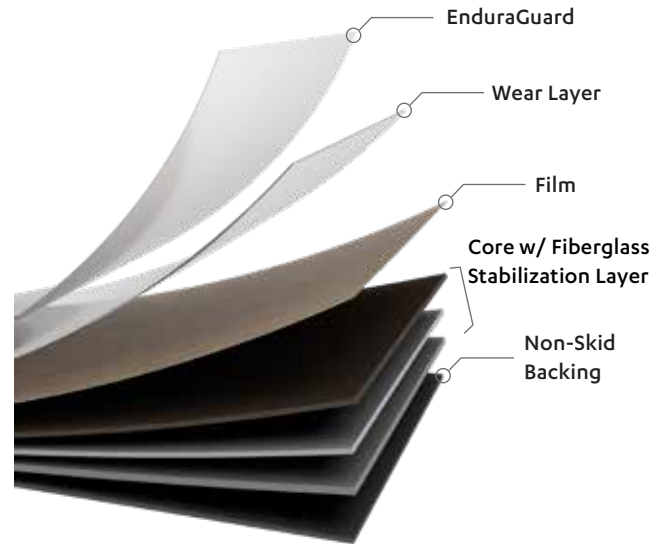
Test Method & Requirements

Flexibility	ASTM F137	Pass
Thickness (with Pad)	ASTM F386	Pass
Wear Layer Thickness	ASTM F410	Pass
Stain/Chemical Resistance	ASTM F925	Pass
Resistance to Heat Change	ASTM F1514	Pass
Resistance to Light Change	ASTM F1515	Pass
Residual Indentation	ASTM F1914	Pass
Size & Squareness	ASTM F2055	Pass
Dimensional Stability	ASTM F2199	Pass
Static Coefficient of Polished Surface	ASTM D2047	Exceeds
Flammability/Radiant Flux	ASTM E648	Class I
Static Load	ASTM E970	Pass>250 lbs
Peel Resistance	ISO 24345	Pass
IIC Rating		57

*The flooring assembly dictates IIC, STC, HIIC, and Low IIC results; contact your representative for specific testing

Health & Environmental

FloorScore SCS Certified
Ortho-Phthalate



Warranty

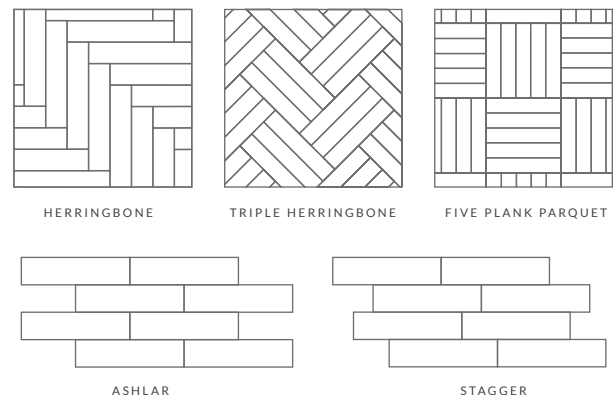
10 Year Commercial

Accessories

[QNoise](#) Stair Nose

Layout Options:

NOT TO SCALE





TAS

CONTRACT

TASCONTRACT.COM

PLATFORMS
LUXURY VINYL



Scan the QR Code to view Platforms, our
TAS Contract custom flooring program.