

This product features a patented 5G fold down lock system with attached underlayment pad for easy installation and is installed as a glue-less floating floor. The planks lock together to provide a tight water-resistant seam, can be installed over most floor surfaces, and are suitable for both residential and light commercial interior applications.

### General Information:

1. Flooring should be transported and stored in a neatly stacked fashion on a smooth, flat surface.
2. This product is recommended for seasonal homes and three season rooms. Installer must leave at least 3/8" (16mm) expansion.
3. This product is not recommended for installs that experience temperature extremes beyond -40°F (-40°C) or greater than 150°F (65°C).
4. Although acclimation is not generally required, best practice recommends the floor be installed close to intended occupied temperature. Rooms to be installed should be between 65° and 85°F (18.33° and 29.44°C) for 48 hours before and during installation. Acclimation is required if the flooring has been exposed to extreme temperatures just prior to installation.
5. This product should only be installed after other trades have finished and the jobsite has been cleaned and cleared of debris that could potentially damage a finished installation.
6. Inspect flooring for damage, defects, or shading issues before installation; claims for visual defects will not be accepted after cutting and/or installation.
7. Mix and install pieces from several different cartons during installation to achieve desirable piece variation. Only use one run-number (production lot) on a particular job.
8. Leave 1/4 inch (6.35mm) for expansion around the entire perimeter of the flooring up to 50'x50' (15.2m x 15.2m), as well as around all vertical obstructions. For larger installations up to 100'x100' (30.4m x 30.4m), its recommended to leave 3/8 inch (10mm) spacing around the perimeter. Commercial installations with continuous spans larger than 100' are not recommended.
9. Flooring should be protected from prolonged direct exposure to sunlight.

### PLEASE READ PRIOR TO INSTALLATION

This product is the newest generation of high-quality luxury vinyl flooring, with a rigid core, ensuring a strong click joint. It can be installed in a fraction of time compared to ceramic tiles, traditional luxury glue-down vinyl tiles, or wooden floors. Luxury vinyl flooring is warm-to-the-touch, and absorbs more sound than wood, laminate, and ceramic tile flooring.

### Tools and Materials Needed:

1. Utility Knife
2. Straight Edge Saw
3. Power Saw
4. Measuring Tape
5. 1/4 or 3/8 Inch Spacers
6. Transition moldings and baseboards

### Hints for Measuring

Measure the length and width to determine the square footage of the room. Alcoves or offsets should be measured separately. Purchase at least 10% extra to cover waste, trimming, and for future replacement needs.

**Caution:** This product is not suitable for outdoor use or in rooms that may be exposed to flooding.

### Subfloors General:

Flooring can be installed over a variety of subfloor surfaces including concrete on all grade levels, wood, and many existing hard surface floors. The subfloors must be clean, smooth, flat, solid (no movement), and dry. Do not install planks over floors that are sloped for drainage. Any uneven areas greater than 3/16 inch (4.76mm) in a 10 foot (3.05m) radius should be leveled with a Portland cement based patching compound. Vinyl planks/tiles are resistant to water damage but they do not prevent the transmission of moisture. Care should be taken to keep moisture from collecting on either side of the vinyl floor to prevent the growth of unhealthy mold and mildew.

### Concrete Subfloors:

Flooring can be installed over concrete of all grade levels if a proper moisture barrier is used. A minimum 6 mil polyethylene moisture barrier must be used with below and on grade concrete subfloors. Moisture vapor emissions should not exceed 5 lbs./24 hours per 1,000 sq. when tested with the Anhydrous Calcium Chloride Test in accordance with ASTM F 1869 or 80% RH in accordance with ASTM F 2170 Standard Test Method for Determining Relative Humidity in Concrete Slabs using in situ Probes. Any uneven areas greater than 3/16 inch (4.76mm) in a 10 foot (3.05m) radius (1/8 inch in a 6 foot radius) should be leveled with a Portland cement based patching compound. Large holes and cracks in the cement should be patched, and expansion joints should be filled with a latex patching compound. Newly poured concrete floors must cure for a minimum of 90 days. Please note it is the person installing the floor and/or the homeowner's responsibility to ensure any moisture or alkalinity issues are resolved prior to installation.

### Wood Subfloors:

Flooring can be installed over a smooth, flat, level, wood subfloor, underlayment grade plywood, and any other underlayment recommended by the manufacturer for use with a vinyl plank floor. Subfloor should be flat within 3/16 inch (4.76mm) in a 10 foot (3.05m) radius (1/8 inch in a 6 foot radius). Wood subfloors must be suspended at least 18" above the ground. Adequate cross-ventilation must be provided, and the ground surface of the crawl space should be covered with a vapor barrier.

NOTE: Avoid subfloors with excessive vertical movement or deflection because subfloor movement will telegraph through to the finished installation. Indications of excessive deflection are: subfloor fastener release, squeaking, compromised or sectional contours such as bowing or dipping in floors and uneven flooring material. Nail or screw subfloor panels to secure boards with excessive vertical movement or deflection prior to installation of the flooring material. Our warranties DO NOT cover any problems caused by inadequate substructures or improper installation of substructures.

### Heated Subfloors:

Underfloor heating is possible with warm water heating systems. Newly installed systems should be turned on at its maximum temperature for several weeks prior to eliminate residual moisture prior to installation of any flooring. During installation, reduce the radiant heated floor temperature to 65°F (18.3°C). This temperature should be maintained for at least 24 hours before and during the installation, and for at least 48 hours after completion of the installation. Gradually increase the temperature in increments of 5°F (2.8°C) every 24 hours but do not exceed 85°F (29.4°C). The temperature of the subfloor surface must not exceed 85°F at any point in time.

### Existing Flooring:

Luxury vinyl floor planks/tiles can be installed over a variety of finished floors including single layer resilient sheet flooring/tile, ceramic, marble and terrazzo. This surface must be in good condition and show no signs of excessive moisture conditions. Large grout joints should be leveled so they are flush with the flooring surface. Carpet, heavily cushioned vinyl floors, or vinyl floors consisting of multiple layers are NOT a suitable subfloor for installation.

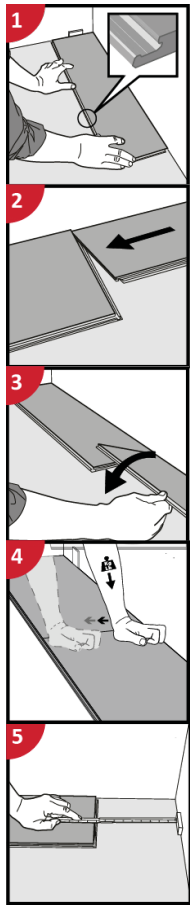
### Underpad / Cushion:

DO NOT install this product over an additional underpad or cushion as this may cause excessive deflection and movement in the floor and damage the locking system and will void the product's warranties.

## Planning the job:

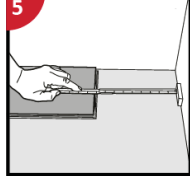
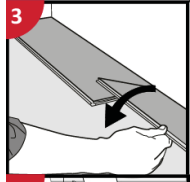
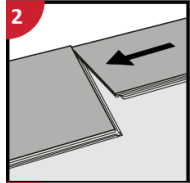
- First, determine how you want the flooring to run. Typically for plank and tile products, the flooring runs the length of the room. There may be exceptions since it is a matter of preference.
- To avoid narrow widths or short lengths near the walls/doors, it is important to do some pre-planning. Using the width of the room, calculate how many full pieces will fit into the area and how much space remains that will need to be covered by partial pieces.
- Lay the first row along a chalk line and trim to fit the wall allowing ¼ inch expansion space. If you start the first row with a full width piece, it will be necessary to trim the tongues next to the wall and then place the cut edge next to the wall. Use a utility knife and a straight edge to score the top surface of the plank and then bend it downward to separate. If the starting wall is out of square, it will be necessary to scribe the first row to match the

## Plank Assembly Steps:



### 1 First piece, first row.

Starting from the left with the tongue facing the wall, carefully place the first piece in place. Use spacers along the wall to allow the required expansion gap (1/4" for spans < 50'; 3/8" for spans > 50'). Refer to Planning the Job above and step 10 below to determine if less than a full width piece is required for the first row.



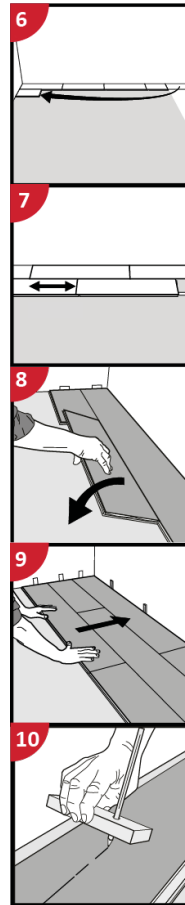
### 2 Second piece, first row.

Place this piece gently close to short end of the first piece. Place spacers against the wall to restrain movement and maintain the expansion gap.

When folding down it is important to start from the corner closest to the wall (or to the previous row in subsequent rows), folding down toward the center, and continue towards the opposite long side. During the fold down, make sure the pieces are close to each other.

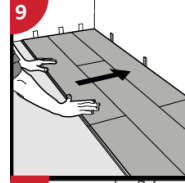
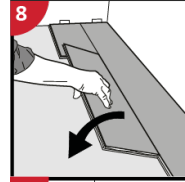
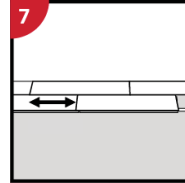
Afterwards press slightly along the short end just installed.

At the end of the first row, put a spacer to the wall and measure the length of the last piece to fit.



### 6 First piece, second row.

You can often use the leftover piece from the end of the first row to begin the second row. The piece must be at least ¼ of a full piece length and no more than ¾ of a full piece length. Visually, the installation will look more natural if the starting planks are a variety of length. Place a spacer against the left wall.



The staggered (overlap) distance between the short ends of pieces in parallel rows must never be less than ¼ of the length of a full piece. This ensures a strong fit.

### 8 Second piece, second row.

Place the piece gently and close to the short end of the previous piece and fold it down as per the procedures outlined in steps 3 and 4.

### 9 After 2 or 3 rows

Check and confirm that all of the spacers placed along the outside length of the first row and row ends are still properly and appropriately in place.

### 10 Last row

The minimum width of the last row should be ¼ of width of a full piece. Remember to allow for the proper amount of expansion space when measuring the remaining width. Measure the width required along the entire length of the last row before beginning to cut pieces as rooms are very rarely perfectly square.

## REPAIRS

In the unlikely event that a piece is damaged for whatever reason, the simplest method is to disconnect the pieces carefully (lift up entire row to separate long sides, and slide pieces side to side to separate short sides) until the damaged piece can be removed. Then replace the damaged piece with a new one and re-assemble the disconnected pieces. This typically works for pieces that are close to the two long perimeters of a room. For damaged pieces that are not close to the perimeter, you may have to remove the damaged planks and insert new pieces without the short and long end grooves.

1. Using a sharp utility knife and a straight edge, cut out the center of the damaged piece by leaving approximately 1 inch strip attached to the adjacent pieces.
2. Carefully cut back from the four corners of the piece to the inside edges. Carefully remove the edges from the adjacent pieces making sure the tongues and grooves of the adjacent pieces are not damaged.

3. Using a sharp utility knife, remove the tongue strip on both the long and short ends of the replacement piece. In addition, remove the groove strip of the short end of the replacement piece.
4. Place two-sided carpet tape with one half under the sides of the adjacent pieces where the tongues and the groove of the replacement piece have been removed. Only the top side release paper of the carpet tape should be removed. Leave the bottom side of the release paper in place - NOT taped to the subfloor.
5. Position the replacement piece by engaging the groove of the long side into the tongue of the adjoining piece and pushing down on the other three sides. The carpet tape will hold the replacement piece in place with its adjacent pieces. Use a hand roller to further secure the tape.

## ScratchMaster™ Lifetime Residential Wear and Waterproof Warranty

Applies to all ScratchMaster™ (546 xxx, 547xxx)

Next Floor™ warrants that this product:

- will not wear through, where “wear through” means the complete loss of wear layer so that the printed pattern changes over a minimum of 3% of the total installation.
- will not be damaged by normal residential household moisture on the surface of the floor (this warranty applies only to ScratchMaster™ product; no representation is made about the effect of excessive or prolonged moisture on subfloors).
- will be free from manufacturing defects.
- this warranty is subject to the remedies, conditions and limitations listed below.

## ScratchMaster™ 10 Year Residential Scratch Resistance Warranty

Applies to all ScratchMaster™ (546 xxx, 547xxx)

Next Floor™ warrants that this product:

- Is highly scratch resistant, defined as a test result of 10N or better when tested according to ASTM D7027 (Hoffman) Evaluation of Scratch Resistance using a Scratch Machine. If your ScratchMaster™ floor tests below this level, Next Floor™ will replace your floor subject to the remedies, conditions and limitations listed below.

## ScratchMaster™ 10 Year Residential Pet Scratch Warranty

Applies to all ScratchMaster™ (546 xxx, 547xxx)

Next Floor™ warrants that:

- That dogs or cats will not cause deep scratches in this floor, defined as scratches that go through the clear wear layer to the design layer. Fine scratches limited to the clear protective layer of the floor are considered normal wear and tear. If dogs or cats cause deep scratches that go through the clear wear layer to the design layer, Next Floor™ will replace the affected area of your ScratchMaster™ floor subject to the remedies, conditions and limitations listed below (maximum one replacement).”

## ScratchMaster™ 10 Year Residential Stain Resistance Warranty

Applies to all ScratchMaster™ (546 xxx, 547xxx)

Next Floor™ warrants that this product:

- Will resist permanent stains from products typically found in homes, including most permanent markers, provided that the floor is properly installed and maintained in accordance with Next Floor™ recommendations (visit [www.nextfloor.net](http://www.nextfloor.net) for complete Installation Instructions and Care and Maintenance Recommendations). A stain is defined as an irreversible localized color change rated less than 3.0 on the AATCC Grey Scale of Evaluating Staining (1.0 = more change; 5.0 = less change).

- This warranty excludes willful damage including burns, as well as any damage or discoloration caused by harsh substances (i.e drain cleaner, bleach, battery acid etc.) that may degrade or destroy the flooring.
- Discolorations caused by asphalt type products or from inappropriate rubber mats are excluded from warranty coverage.
- This warranty is not a cleaning contract. The consumer must perform proper cleaning and maintenance regularly and as needed. In order to make a claim under this warranty, the owner must have attempted to remove the stain within three (3) working days after occurrence of the spill.
- this warranty is subject to the remedies, conditions and limitations listed below.

The following remedies are available to you if the floor fails to perform according to these warranties:

- During the first year following installation, Next Floor™ will at its option (i) repair the floor to conform to the warranty or (ii) replace without charge the affected area with another floor of equal value and quality. If the floor was professionally installed by a flooring contractor, Next Floor™ will also pay reasonable replacement labor costs.
- During the second year, Next Floor™ will at its option (i) repair the floor to conform to the warranty or (ii) provide a credit note for 90% of the original purchase price for materials and 50% of reasonable replacements labor if the floor was professionally installed by a flooring contractor.
- After the second year, Next Floor™ will at its option (i) repair the floor to conform to the warranty or (ii) provide a credit note for material only (no labor) based on the following schedule:
  - During the third year                   80% credit
  - During the fourth year:               70% credit
  - During the fifth year:                 60% credit
  - During the sixth year:                50% credit
  - During the seventh year:             40% credit
  - During the eighth year:              30% credit
  - During the ninth year:               20% credit
  - After the ninth year:                 10% credit

#### Conditions and Limitations

- The product must be properly installed according to Next Floor™ installation instructions. Defective installation is not covered by the warranty. Proper installation includes but is not limited to improper adhesives, inadequate subfloor, and improper subfloor preparation. Subfloor must be clean, smooth, flat, solid (no movement), and dry, and all sources of subfloor moisture must be remedied prior to installation. Visit [www.nextfloor.net](http://www.nextfloor.net) to view full installation instructions for these products.
- ScratchMaster™ is not to be installed in areas that experience temperature extremes greater than 150°F(65°C) or beyond -40°F (-40°C).
- Excessive subfloor cracking and movement can cause the floor to crack. Next Floor™ cannot be responsible for damage from an unstable or deteriorating subfloor.
- Applies only to material sold as first quality.
- Does not cover loss of gloss or dulling of the surface.
- Gouges are not covered by these warranties.
- Damage from inappropriate maintenance is not covered by the warranty. This includes but is not limited to damage from vacuum cleaners.
- Damage and/or joint failure from abuse such as furniture moving, the use of caster chairs without proper floor mats/protectors, or repeated rolling loads are not covered by these warranties.
- Discoloration from heat, light, mold or alkali are not covered by these warranties.
- Problems resulting from excessive moisture in the subfloor are not covered by these warranties.

- Next Floor™ will not pay labor to replace material installed with visible defects that could be seen prior to installation.
- These warranties do not cover the cost of moving furniture, appliances or computers, or other site preparation required for the replacement.
- A difference in color of the floor compared to the sample or photograph are not covered by these warranties. Subtle differences in texture compared to the sample are not covered by these warranties. Production lots will vary, and these differences are not considered manufacturing defects.
- These warranties apply only to the initial owner and are non-transferable. These warranties provide a maximum of one replacement floor. These warranties cover only normal household conditions commonly associated with daily household use.
- These warranties do not cover mouldings and trims.
- Damage from inappropriate footwear such as golf spikes, ice skates and other athletic footwear is not covered by these warranties.

#### How to File a Claim

If you think that there is a defect in your ScratchMaster™ flooring that is covered by these warranties, you must notify the retailer (or distributor) who sold you the flooring. Your retailer (or distributor) will be able to file a claim on your behalf. Proof of purchase, including the Next Floor™ invoice number for the material involved, the date of purchase and the date of installation must be presented to file a claim. Claims filed against the Scratch Resistance warranty must also include and a minimum 8" x 7" uninstalled sample of your flooring for testing in accordance with ASTM D7027.

## ScratchMaster™ 30 Year Commercial Warranty

Applies to all ScratchMaster™ (546 xxx, 547xxx)

Next Floor™ warrants that this product:

- will not wear through, where “wear through” means the complete loss of wear layer so that the printed pattern changes over a minimum of 3% of the total installation.
- will be free from manufacturing defects.

The following remedies are available to you if the floor fails to perform according to the warranty:

- During the first year following installation, Next Floor™ will at its option (i) repair the floor to conform to the warranty or (ii) replace without charge the affected area with another floor of equal value and quality. If the floor was professionally installed by a flooring contractor, Next Floor™ will also pay reasonable replacement labor costs.
- After the first year, Next Floor™ will at its option (i) repair the floor to conform to the warranty or (ii) provide a credit note for material only (no labor) based on the following schedule:
  - During the second year: 90% credit
  - During the third year: 80% credit
  - During the fourth year: 70% credit
  - During the fifth year: 60% credit
  - During the sixth year: 50% credit
  - During the seventh year: 40% credit
  - During the eighth year: 30% credit
  - During the ninth year: 20% credit
  - After the ninth year: 10% credit

### Conditions and Limitations

- The product must be properly installed according to Next Floor™ installation instructions. Defective installation is not covered by the warranty. Proper installation includes but is not limited to improper adhesives, inadequate subfloor, and improper subfloor preparation. Subfloor must be clean, smooth, flat, solid (no movement), and dry, and all sources of subfloor moisture must be remedied prior to installation. Visit [www.nextfloor.net](http://www.nextfloor.net) to view full installation instructions for this product.
- ScratchMaster™ is not to be installed in areas that experience temperature extremes greater than 150°F(65°C) or beyond -40°F (-40°C).
- Excessive subfloor cracking and movement can cause the floor to crack. Next Floor™ cannot be responsible for damage from an unstable or deteriorating subfloor.
- Applies only to material sold as first quality.
- Does not cover loss of gloss or dulling of the surface.
- Gouges are not covered by these warranties.
- Damage from inappropriate maintenance is not covered by the warranty. This includes but is not limited to damage from vacuum cleaners.
- Damage and/or joint failure from abuse such as furniture moving, the use of caster chairs without proper floor mats/protectors, or repeated rolling loads is not covered by the warranty.
- Discoloration from heat, light, mold or alkali are not covered by the warranty.
- Problems resulting from excessive moisture in the subfloor are not covered by this warranty.
- Next Floor™ will not pay labor to replace material installed with visible defects that could be seen prior to installation.

- This warranty does not cover the cost of moving furniture, appliances or computers, or other site preparation required for a replacement.
- A difference in color of the floor compared to the sample or photograph are not covered by this warranty. Subtle differences in texture compared to the sample are not covered by this warranty. Production lots will vary, and these differences are not considered manufacturing defects.
- The warranty applies only to the initial owner and is non-transferable. The warranty provides a maximum of one replacement floor.
- This warranty does not cover mouldings and trims.
- Damage from inappropriate footwear such as golf spikes, ice skates and other athletic footwear is not covered by this warranty.

#### How to File a Claim

If you think that there is a defect in your ScratchMaster™ flooring that is covered by this warranty, you must notify the retailer (or distributor) who sold you the flooring. Your retailer (or distributor) will be able to file a claim on your behalf. Proof of purchase, including the Next Floor™ invoice number for the material involved, the date of purchase and the date of installation must be presented to file a claim.



# ScratchMaster™ Care & Maintenance

## Maintenance

Your Next Floor Luxury Vinyl floor is durable and easy to clean. Effective maintenance of your flooring is common sense, all good maintenance procedures consist of thorough dirt and grit control, removal of spills and the protection of the floor surface.

Walk off mats can help considerably reduce the amount of grit brought in by foot traffic, sweeping, mopping and vacuuming all help to control grit. Damp mopping, spot cleaning and washing will remove most spills and stains. The local conditions of your area will determine specific maintenance needs. Prepare an appropriate maintenance program that meets the needs of the specific facility.

## Regular Maintenance

- Sweep or vacuum the floor to remove all loose dirt and grit.
- Damp mop the floor with a solution of detergent recommended for vinyl flooring - always read the label to ascertain suitability and follow the manufacturer's instructions for application.
- Rinse and allow to dry.
- Buff the floor with a dry soft mop or cloth.
- In high traffic areas it may be advisable to utilize a good quality floor polish - again, always read the label to ascertain suitability and follow the manufacturer's instructions for application.

## Caution

- Cigarettes and other hot objects of high temperature can scar the surface of the floor.
- Certain types of rubber should be avoided unless it is known they are non-staining. (e.g. rubber backed mats)
- Asphalt type products are known to cause PVC to yellow. Care must be taken to avoid stains from these types of products (e.g. residue brought in from newly laid drives, roads etc.)

*Warning: Next Floor luxury flooring can be quite slippery when wet. All necessary precautions should be taken when maintaining flooring of this type. Allow for adequate dry time after washing and wipe up all wet areas immediately. Improper cleaners or polishes may also cause slipperiness.*

## Care for Immediately After Installation

- Remove all loose dirt by sweeping or vacuuming with suitable domestic vacuum cleaner (ensure the smooth flooring setting is selected).
- When returning heavy furniture and appliances to the room always use strips of plywood or hardboard to protect the floor. Install wide-bearing, non-staining felt protectors on all movable furniture.
- Remove all loose dirt by sweeping or vacuuming with suitable domestic vacuum cleaner (ensure the smooth flooring setting is selected).
- Remove any residual adhesive from the surface following the adhesive manufacturer's instructions.
- Foot traffic and cleaning is acceptable immediately after installation for Click / Floating Floors.

## Preventive Care / Routine Maintenance

- Sweep or vacuum (without beater brush) at least once weekly or more often to remove loose dirt, sand and grit from your floor.
- Check felt protectors on movable furniture periodically for grit and wear and replace when necessary.
- Heavy appliances and furniture that are not moved often should have square 1 1/2" to 2 5/8" or round from 1 3/8" to 1 5/8" flat, non-staining composition furniture sliders installed.
- Place mats at outside entrances to prevent dirt, grit, water, snow, or ice from being tracked onto your floor.

*Warning: Next Floor luxury flooring can be quite slippery when wet. All necessary precautions should be taken when maintaining flooring of this type. Allow for adequate dry time after washing and wipe up all wet areas immediately. Improper cleaners or polishes may also cause slipperiness.*