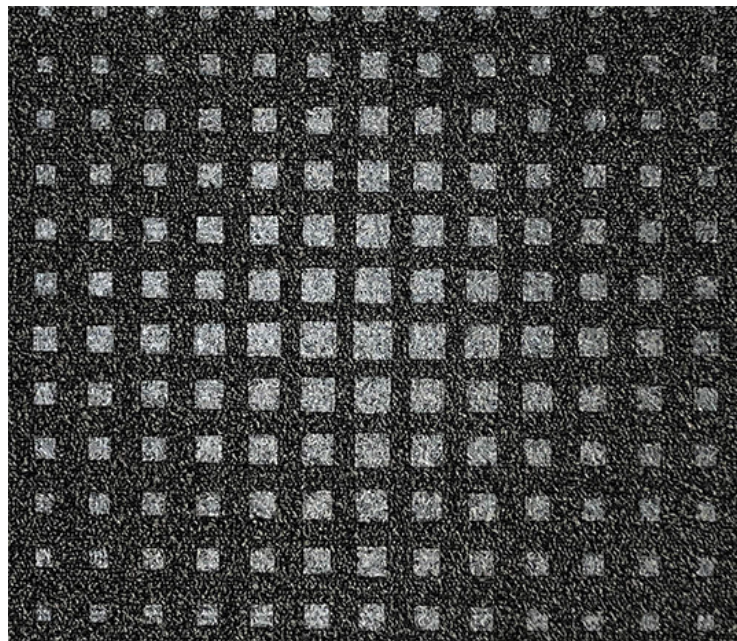


Terra Firma | NE896001



Charcoal | NE896003

SPECIFICATIONS

Construction	PVC Free, Four Layers: Non-Woven Primary Layer Advanced Polymer Pre-Coat Modified Bitumen Core Polyester Felt Back
Tile Dimensions	19.7" x 19.7", 50 cm x 50 cm
Weight	24 oz, 815 g/m
Gauge	1/12"
Density oz/yd	7500 oz
Packaging	20 tiles/carton - 32 carton/pallet
Warranty	Lifetime Commercial, Stain Resistance, Backing Performance, Wear

INSTALLATION FAST FACTS

- Follow CRI Carpet Installation Standards Guidelines
- Inspect new flooring prior to installation
- Clean up spills immediately
- Vacuum regularly and use walk-off mats at entrances



Read Complete Instructions Before Installing
SPEC SHEET, WARRANTY
INSTALLATION & MAINTENANCE

