

C O R P O R A T E R E T A I L

C A T A L O G

We are excited

to welcome you and your guests to Pinehurst for your upcoming event! Commemorate your stay with us by cobranding apparel and merchandise! We would like to offer the opportunity to place your logo alongside the iconic Putter Boy logo. We can customize gifts and apparel by adding your corporate logo, event logo, or text.

Through our network of preferred vendors we can meet practically any gift idea or need you may have.

Corporate Retail Coordinator
ALLY CAMPBELL
Ally.Campbell@pinehurst.com



CORPORATE DISCOUNT LEVELS

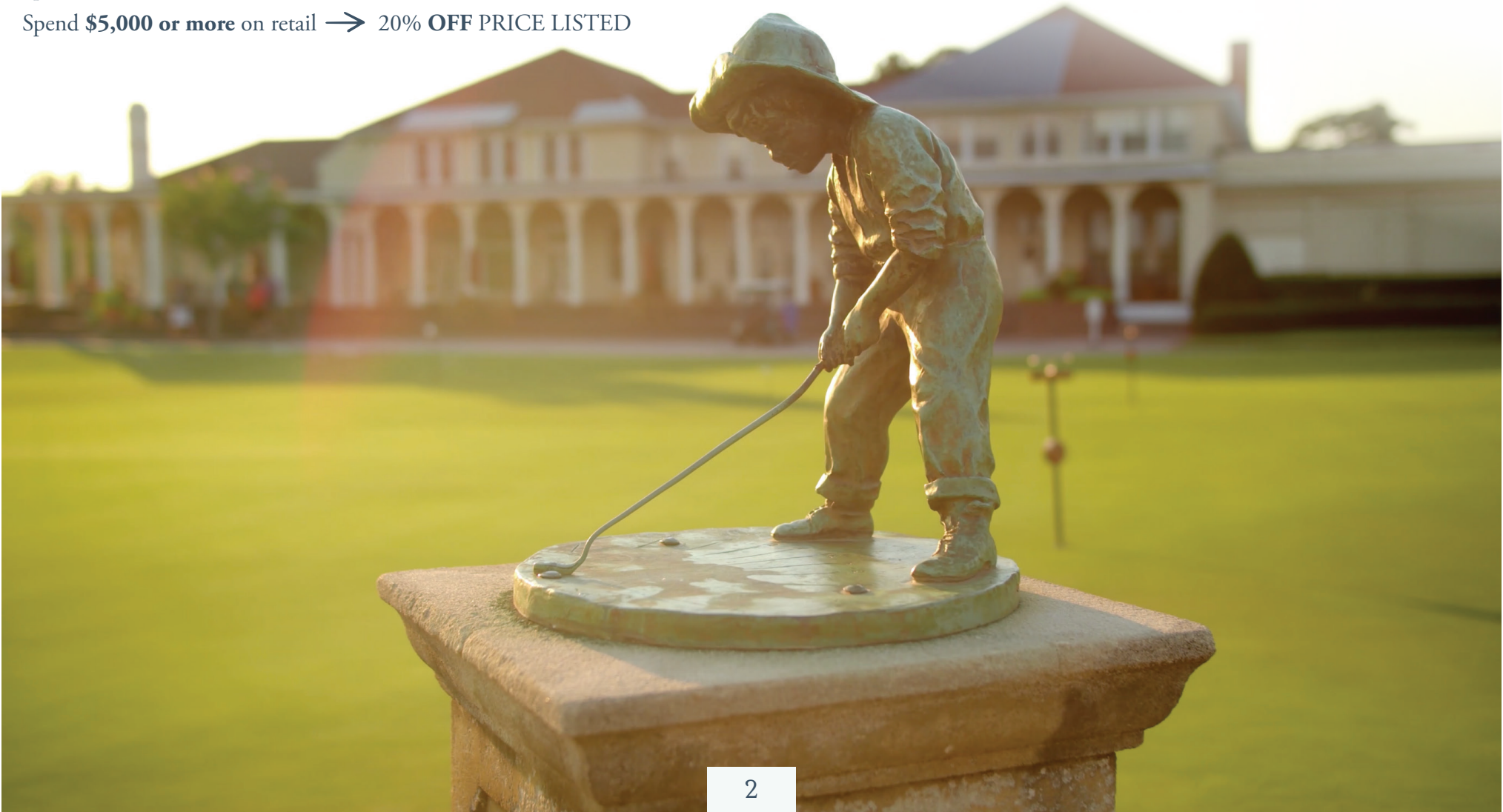


CORPORATE RETAIL DISCOUNT LEVELS:

Spend **\$1,999 or less** on retail → 10% **OFF PRICE LISTED**

Spend **\$2,000–\$4,999** on retail → 15% **OFF PRICE LISTED**

Spend **\$5,000 or more** on retail → 20% **OFF PRICE LISTED**



COBRANDED APPAREL



We work with most major apparel vendors in the golf industry. Your options are nearly *unlimited* when it comes to the variety of apparel to choose from. All apparel comes with our iconic Putter Boy logo and can be co-branded with your corporate or event logo.

Please

Contact our Corporate Retail Coordinator, Ally Campbell, for quotes on merchandise. Pricing is based off of quantity, lead time, and number of logos added.

COBRANDING POLICY

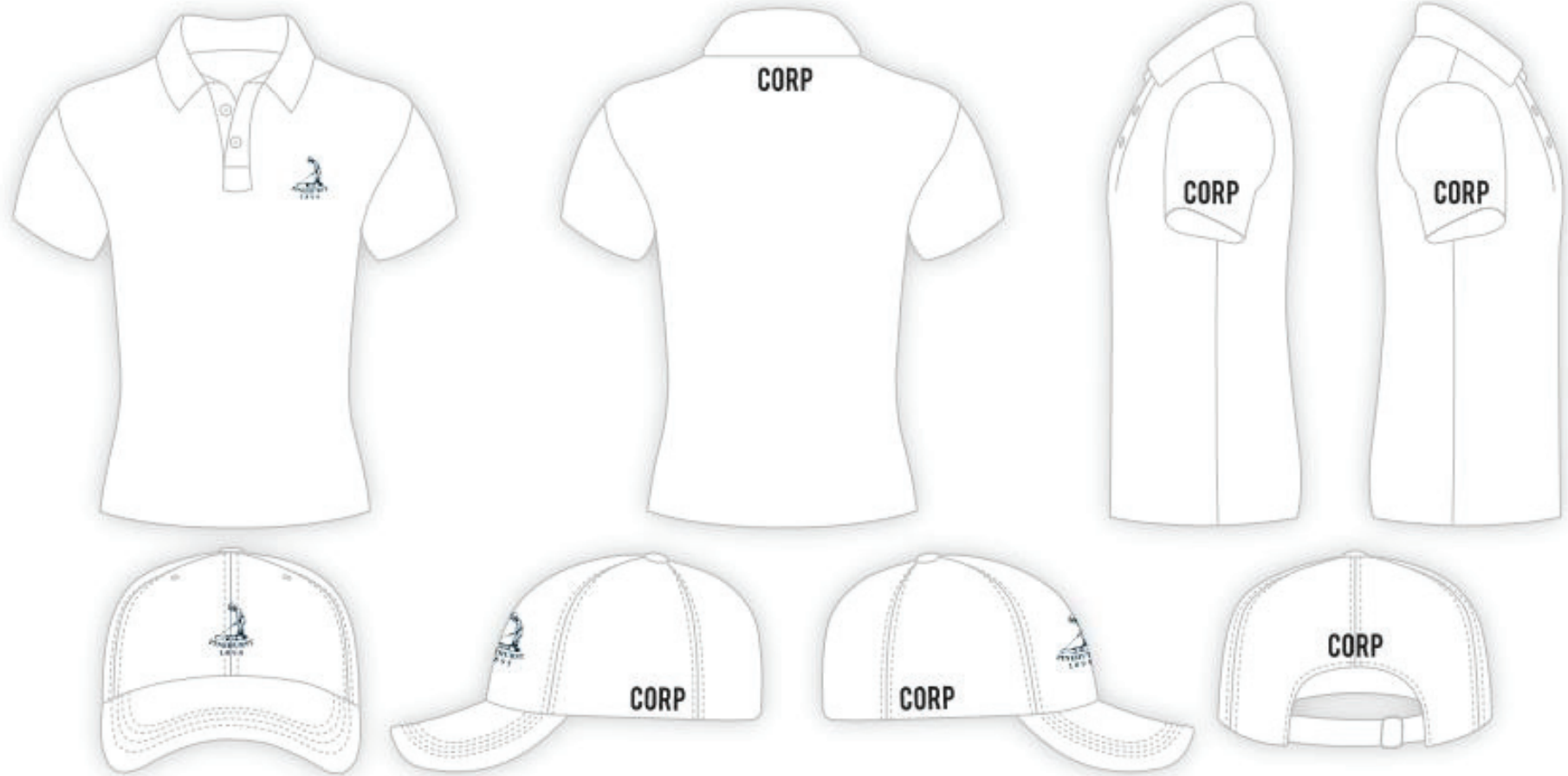


- Pinehurst Resort welcomes the opportunity to place your corporate logo, event logo, or text alongside our iconic Putter Boy.
- Please note that the primary logo location on any piece is reserved for the Putter Boy. Your logo will then be placed in a secondary location.
 - For example, if the Putter Boy logo is on the left chest of a shirt, your corporate logo can be placed on the sleeve or center back of the garment.
- Pricing for additional logos has many variables and will be added to the price of the garment on a case by case basis.
- Providing a digitized logo for embroidery (.dstfile) will reduce the cost of embroidery and lead time required to receive product on time.
 - If you do not have a .dstfile available, we can send a high quality .jpeg or .eps file to our embroiderer to create one for a \$50 digitizing fee.
- If we are required to take your logo from an art file to a fully digitized embroidery file, we must have your logo art work at least one month ahead of your event date. This allows us time to digitize the logo, provide a sew out for proofing, make changes if necessary, and get the final approval.

Apparel



CORPORATE LOGO PLACEMENTS



NOTE: Be sure to confirm where the item may have vendor branding, therefore limiting your corporate logo location on that item. (Example: Levelwear LW on right sleeve)

PETER MILLAR ESSENTIAL POLOS



MEN'S



Solid Performance Jersey Polo

MEOEK01
COTTAGE BLUE - MENS
92% Polyester / 8% Spandex, 4.7 oz
Knit Collar
ESSNT-00-44-00-49



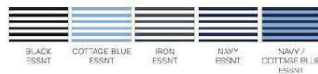
Solid Performance Jersey Polo

MEOEK01S
PALMER PINK - MENS
92% Polyester / 8% Spandex, 4.7 oz
Sean Self Collar
ESSNT-00-44-00-49



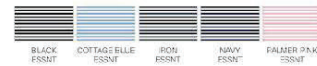
Hales Performance Polo

MEOEK03S
IRON - MENS
92% Polyester / 8% Spandex, 4.7 oz
Sean Self Collar
ESSNT-00-64-00-89



Jubilee Performance Polo

MEOEK11S
COTTAGE BLUE - MENS
92% Polyester / 8% Spandex, 4.7 oz
Sean Self Collar
ESSNT-00-64-00-89



Halford Performance Jersey Polo

MA24EK12S
GALE GREY - MENS
92% Polyester / 8% Spandex
AN24-00-74-00-001



Solid Performance Mesh Polo

MEOEK50S
NAVY - MENS
94% Polyester / 6% Spandex, 4.6 oz
Sean Self Collar
ESSNT-00-44-00-49



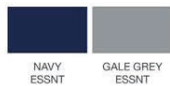
PETER MILLAR OUTERWEAR



MEN'S



Shield Half-Zip Rain Shell
 ME0EZ01
 GALE GREY - MENS
 100% Nylon with PU Laminate
 ESSNT-00-69-00-002



Shield Short Sleeve Rain Shell
 ME0EZ02
 NAVY - MENS
 100% Nylon with PU Laminate
 ESSNT-00-58-00-081



Merge Elite Hybrid Jacket
 ME0EZ45
 NAVY - MENS
 Chest - 100% Polyester with PU Laminate, Sleeve And Back - 87%
 Polyester 13% Spandex
 ESSNT-00-311-00-032



Galway Performance Quarter-Zip Vest
 ME0EK41
 IRON - MENS
 89% Polyester / 11% Spandex, 6 oz
 ESSNT-05-05-00-011



PETER MILLAR OUTERWEAR



MEN'S



Cradle Performance Crewneck
ME0EK43
SPORT NAVY - MENS
89% Polyester / 11% Spandex, 6 oz
ESSNT-00-36-00-531



SPORT NAVY
ESSNT



Pine Performance Hoodie
ME0EK45
WHITE - MENS
89% Polyester / 11% Spandex, 6 oz
ESSNT-00-56-00-041



NAVY
ESSNT

WHITE
ESSNT



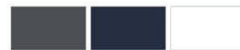
Perth Performance Quarter-Zip
ME0EK40
COTTAGE BLUE - MENS
89% Polyester / 11% Spandex, 6 oz
ESSNT-05-35-00-511



BLACK
ESSNT

BRITISH GREY
ESSNT

COTTAGE BLUE
ESSNT



IRON
ESSNT

NAVY
ESSNT

WHITE
ESSNT



Perth Mélange Performance Quarter-Zip
ME0EK40B
SMOKE - MENS
89% Polyester / 11% Spandex, 6 oz
ESSNT-05-26-00-531



GALE GREY
ESSNT

NAVY
ESSNT

SMOKE
ESSNT



Perth Sugar Stripe Performance Quarter-Zip
ME0EK40E
IRON/WHITE - MENS
89% Polyester / 11% Spandex, 6 oz
ESSNT-05-26-00-531



COTTAGE BLUE / WHITE
ESSNT

IRON / WHITE
ESSNT

NAVY / WHITE
ESSNT

PETER MILLAR MICROSITE



- 1) Piece together packages within a specific budget
- 2) Create a MICROSITE displaying all the product
- 3) Link and password will be sent out to all participants
- 4) Site opens 5 weeks prior to event date
- 5) Players will have approx. 3 weeks to place orders
- 6) The site will close 2 weeks prior to event
- 7) Product is shipped to all the participants at the event
- 8) Product does not include logoed pieces



DUNNING GOLF ESSENTIALS



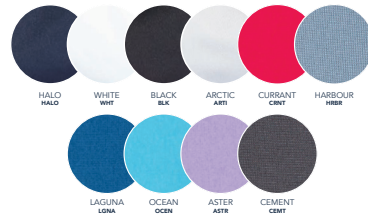
MEN'S



D ESSENTIALS

PLAYER JERSEY PERFORMANCE POLO

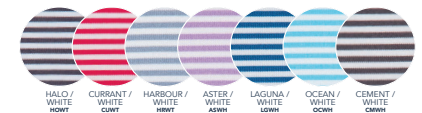
49% COOLMAX® | 47% POLYESTER | 4% SPANDEX
 SELF COLLAR, CONTRAST NECK SEAM PIPING, RECYCLED POLY BUTTONS, TONAL
 DUNNING LOGO EMBROIDERED ON BACK YOKE, UPF 50+



D ESSENTIALS

HELBSY JERSEY PERFORMANCE POLO

43% COOLMAX® | 42% POLYESTER | 15% SPANDEX
 SELF COLLAR, CONTRAST NECK SEAM PIPING, RECYCLED POLY BUTTONS,
 DUNNING LOGO TAB ON RIGHT SLEEVE, UPF 50+



D ESSENTIALS

PLAYER JERSEY PERFORMANCE VEST

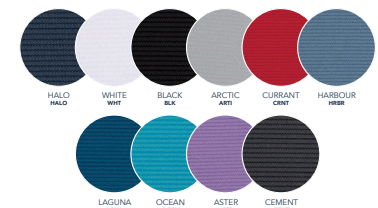
91% POLYESTER | 9% SPANDEX
 MIDWEIGHT LAYER, CONTRAST D LOGO LOCKING ZIPPER, ZIPPER GUARD,
 CONTRAST DUNNING LOGO EMBROIDERED ON BACK YOKE, UPF 50+



D ESSENTIALS

PLAYER JERSEY PERFORMANCE QUARTER ZIP

91% POLYESTER | 9% SPANDEX
 MIDWEIGHT LAYER, CONTRAST D LOGO LOCKING ZIPPER, ZIPPER GUARD, RAGLAN
 SLEEVES, CONTRAST DUNNING LOGO EMBROIDERED ON BACK YOKE, UPF 50+



HOLDERNESS & BOURNE



MEN'S



The Anderson Shirt
HB2001
Black -



The Anderson Shirt
HB2001
Navy -



The Anderson Shirt
HB2001
White -



The Perkins Shirt
HB2002
Navy & White -



The Perkins Shirt
HB2002
Windsor & White -



The Scott Shirt
HB2027
White -



The Westland Pullover
HB2031
Navy -



The Westland Pullover
HB2031
Gray -

JOHNNIE-O COLLECTION



MEN'S

Lyndon JMPO2010 *3XL Availability



Birdie JMPO1710



Flex JMKO1420 *3XL Availability



Diaz JMKO2020



Vaughn JMKO1890 *3XL Availability



Sully JMKO1460 *3XL/B&T Availability



Blakey JWKO1040



Kennedy JWKO1020



ADIDAS POLO



MEN'S



COLLEGIATE NAVY



BLACK



WHITE

WOMEN'S



OTTOMAN
COLLEGIATE NAVY



OTTOMAN
COLLEGIATE RED



OTTOMAN
COLLEGIATE ROYAL



QUARTER ZIP JACKET
NAVY



QUARTER ZIP JACKET
WHITE



WHITE



UNDER ARMOUR 3.0 POLO



MEN'S



MIDNIGHT
NAVY/HEATHER



MOD GREY HEATHER



BLACK HEATHER



WHITE



LIGHT BLUE



ROYAL BLUE



UNDER ARMOUR 3.0 POLO



WOMEN'S



MIDNIGHT NAVY/HEATHER



MOD GREY HEATHER



BLACK HEATHER



WHITE



LIGHT BLUE



ROYAL BLUE



UNDER ARMOUR LAYERING



MEN & WOMEN'S



PITCH GREY



BLACK



WHITE



MIDNIGHT
NAVY/HEATHER



ACADEMY



PITCH GREY



BLACK



ROYAL



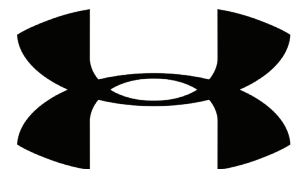
MIDNIGHT
NAVY/HEATHER



BLACK
HEATHER



WHITE



UNDER ARMOUR LAYERING



MEN'S



MIDNIGHT
NAVY/HEATHER



PITCH GRAY
NOVELTY



ANTHRACITE
HEATHER



BLACK



ACADEMY



PITCH GREY

WOMEN'S



WHITE



ROYAL



MIDNIGHT
NAVY/HEATHER



ANTHRACITE
HEATHER



UNDER ARMOUR

NIKE VICTORY POLO



MEN'S



010



100



412



419

WOMEN'S



010*



100*



419



480



NIKE VICTORY 1/2 ZIP



MEN'S



010



025



419



101



WOMEN'S



010

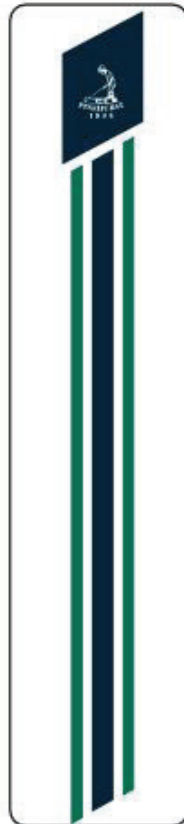


100

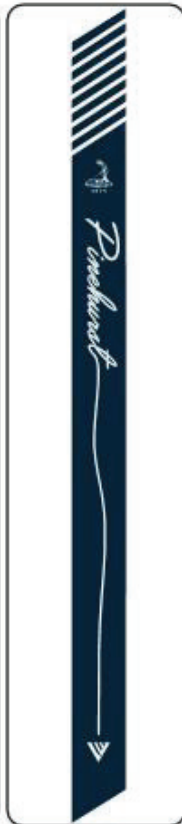
20



LEVELWEAR CUSTOM MIDLAYER



PLACKET
on Peak



PLACKET
on Energy 1/2 Zip



CLUB LOGO
LEFT CHEST



YOUR CORPORATE LOGO
LEFT SLEEVE

PEAK

Base Body : JL50L
 Sizes: S-XXXL*
 (* AVAILABLE IN 4XL)
 88% POLYESTER
 12% SPANDEX
 Minimum: 36

Available Colors:

Royal Blue 025
Heather Charcoal ABK
Flame Red AC0
Navy 003*
Black 002*
White 001*



MEN'S

ENERGY 1/2 ZIP

Base Body : JL00L
 Sizes: XS-XL*
 (* AVAILABLE IN 3XL)
 88% POLYESTER
 12% SPANDEX
 Minimum: 36

Available Colors:

Royal Blue 025
Heather Charcoal ABK*
Flame Red AC0*
Navy 003*
Black 002*
White 001*



WOMEN'S

LEVELWEAR



LEVELWEAR CUSTOM MIDLAYER



PLACKET
on Peak



PLACKET
on Energy 1/2 Zip



CLUB LOGO
LEFT CHEST



YOUR CORPORATE LOGO
LEFT SLEEVE

NITRO

Base Body : JT57L
 Sizes: S-XXL*
 (*AVAILABLE IN 3XL)
 88% POLYESTER
 12% SPANDEX
 Minimum: 36

Available Colors:

	Royal Blue 025
	Heather Charcoal ABK
	Flame Red AC0
	Navy 003*
	Black 002*
	White 001



MEN'S

DAWN

Base Body : JT03L
 Sizes: XS-XL*
 (*AVAILABLE IN XXL)
 88% POLYESTER
 12% SPANDEX
 Minimum: 36

Available Colors:

	Royal Blue 025
	Heather Charcoal ABK*
	Flame Red AC0
	Navy 003
	Black 002*
	White 001



WOMEN'S

LEVELWEAR



Headwear



CUSTOM HEADWEAR



Much like our apparel options, headwear is *virtually limitless* as well. Materials range from lightweight cotton to the newest moisture wicking technical fabric. We work with vendors such as Ahead, Pukka, Imperial, Titleist, & more!

Pricing of headwear with the Putter Boy Logo and Corporate Logo ranges from \$24 -\$32

The Putter boy logo must take primary location on the headwear. Logo options for additional embroidery are the wearer's left or right side, or on the back above the closure. Please refer to the cobranding guidelines (slide 4) for size restrictions.



AHEAD CUSTOM CAP



SHAWMUT - C47LGT



- CLASSIC CUT • LIGHTWEIGHT COTTON
- UNSTRUCTURED • VELCRO TAB • LOOP GRAB

3430 U. CARDINAL	3330 CRIMSON	C NEW MELON
8105 MAGENTA	F FLAMINGO	6330 SUNKIST
9 RUST	6050 U. ORANGE	7140 U. GOLD
7 SOFT YELLOW	7240 MARIGOLD	5410 SAGE
5210 GEORGIA GREEN	5310 JADE	E LIME
4970 TEAL	A ROYAL	4580 U. CAR. BLUE
4490 U. TOUR BLUE	1 NAVY	6 KHAKI
4 BONE	3 WHITE	2 BLACK
D GRAPHITE	0400 CARBON	

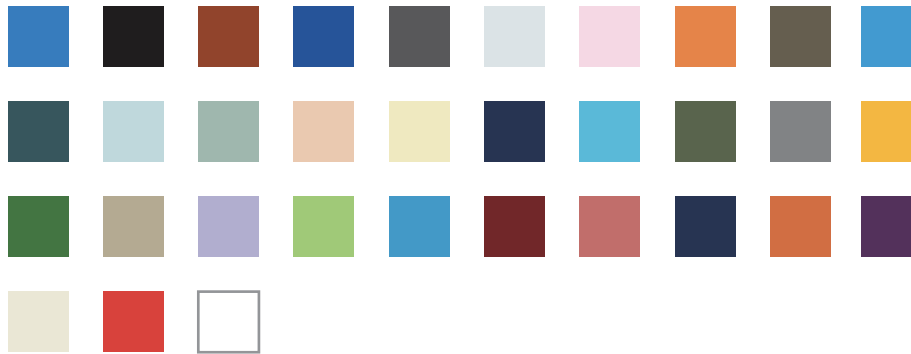


For more styles please visit

<http://www.aheadhq.com/catalogs/2020-Ahead-Corporate.pdf>



IMPERIAL CUSTOM CAP



X210P - The Original Performance Cap



X110B The Original Lightweight - Adjustable Cotton Cap

PUKKA CUSTOM CAP



— / ULTRA-FIT HAT \ — **ULTRA-FIT 10**

Shown as:

Fabric / Color: Stretch Twill / White

- Ultra-Fit Hat
- 6-Panel / Low Crown / Unstructured / Curved Visor
- Flat Embroidery



Industry-Low Minimums

Most silhouettes only require a 48-piece minimum order. You can also take advantage of 24-piece minimums on select silhouettes.

30-Day Production

Once the artwork is approved for your custom headwear order, it will take approximately 30 days to produce and up to five days to be delivered.

For more styles please visit pukkainc.com

on-site Experiences



MAUI JIM SUNGLASS FITTING



CUSTOM SUNGLASS FITTING

Putter Boy Package

Pinehurst Package

1895 Package

The Maui Jim Experience is completely hassle free. We'll take care of all the details-professional set-up, expert fitters, and fast teardown!

Pinehurst offers three tournament packages from Maui Jim to fit your desired event needs. Maui Jim offers everything from lightweight sport styles and Maui Readers Plus, to stylish nylon and metal frames. Once you have chosen your package, Maui Jim will arrange an assortment of their best-selling styles for your event.

Custom case & cleaning cloth added at an additional cost per package

RAY-BAN SUNGLASS FITTING



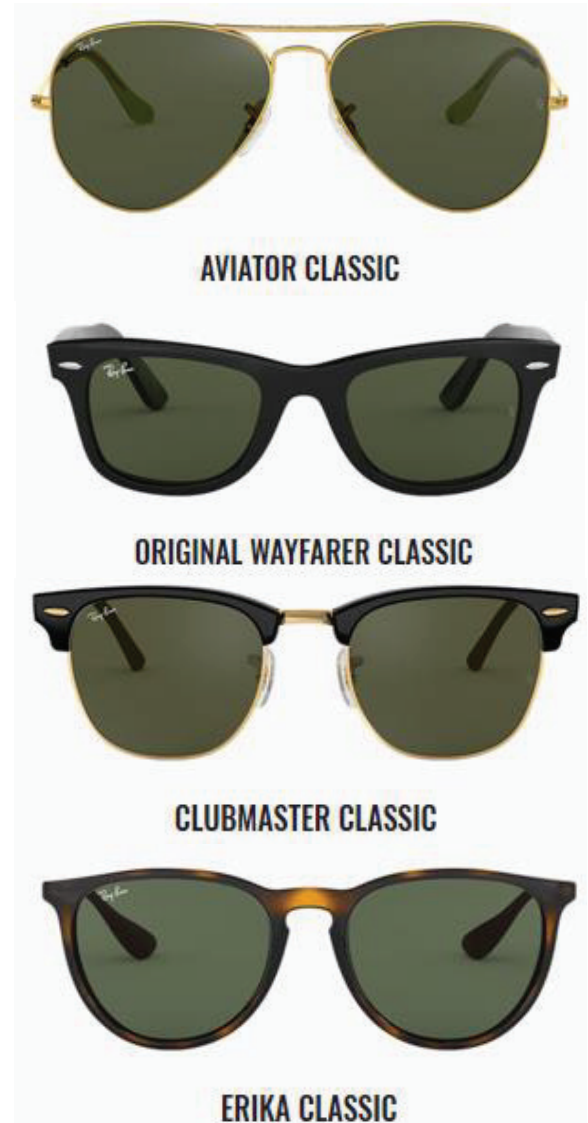
Ray-Ban®

THREE PACKAGE OPTIONS:

Basic
Premium
Polarized

“THE SPECIFICS”

4-6 Styles are selected for guests to choose from
Difference between packages is lens quality
Styles and props are shipped to Pinehurst pre-event
Set-up and fitting is taken care of by professionals
Each guest walks away with a new pair of sunglasses



TITLEIST CLUB & FOOTJOY SHOE FITTING



SPECIAL PROGRAMS

Scotty Cameron Custom Putter Fitting

Titleist Vokey Custom Wedge Fitting

FootJoy Custom Shoe fitting

FootJoy Glove fitting

Titleist®



FOOTJOY®



"CUSTOM FIT GOLF
CLUBS HAVE BEEN
PROVEN TO LOWER
SCORES."

BRETT PORATH, DIRECTOR OF GOLF CLUB FITTING

Personalized Gifting

COBRANDED GOLF ACCESSORIES



ENGRAVABLE BAG TAGS

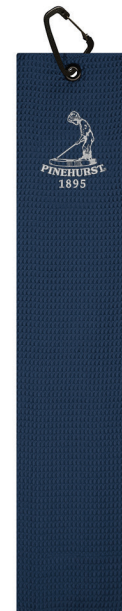
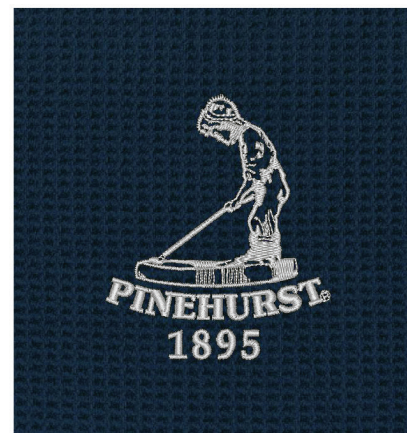


ENGRAVABLE BAG TAG

Can engrave up to 2 lines

commemorate your event at Pinehurst with one of our engravable bag tags. Include players' name, event date, or even the course that was played!

COBRANDED GOLF TOWELS



PUTTERBOY MICROSCRUBBER TRI-FOLD TOWEL

Add personalization, company logo, or prize categories for an additional \$10

Available in khaki, navy, red, & black



COBRANDED TITLEIST GOLF BALLS



Titleist®

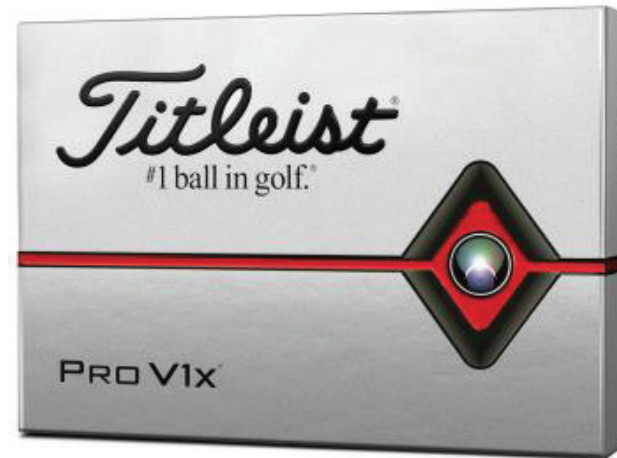
TITLEIST CUSTOM GOLF BALLS
& COBRANDING GOLF BALLS

DOUBLE LOGO:

7/8" color logo on two poles of the golf ball. Print up to
5 PMS colors on both poles.

Minimum: 12 Dozen

Lead-Time: 7 Business days from artwork approval



COBRANDED HEAD COVERS



YANKEE SERIES

Our premium Yankee series head covers are designed for the golfer who appreciates the look and feel of genuine leather. Available in three styles, a set of Yankee head covers will add an elegant touch to your bag. Sized to fit: drivers, fairways, and hybrids.

1 CHOOSE A STYLE

Available in 3 styles and 8 classic colors.

2 CHOOSE A COLOR

Genuine Leather

WEF, BAK, BE, BAY, GAY, BEE, BOW, BUN, BUB

3 CHOOSE A LAYOUT

EQWIF, EQWIFR

4 CHOOSE NUMBERS (OPTIONAL)

Each head cover style has its own number design to enhance the unique character of that style. See the number design for your favorite head cover style on the How to Order page (14).

Available in 3 styles and 8 classic colors.

Collared back panel allows for a secure fit.

Optional embroidered number on front.

Your logo or graphics in high quality embroidery.

Applied or embroidered accents for a classic styling.

Water-resistant, hand selected genuine leather.

Flare design "switch flap" that protects the face head and improves the fit in the cover stays on.

AM&E CUSTOM HEADCOVERS

AM&E CUSTOM HEADCOVERS

VICTOR SERIES

Our best-selling head cover, the Victor series offers a refined design in eight styles, sized to fit: drivers, fairways and hybrids.

1 CHOOSE A STYLE

WEF, BAK, BE, BAY, GAY, BEE, BOW, BUN, BUB

2 CHOOSE A COLOR

Genuine Leather

WEF, BAK, BE, BAY, GAY, BEE, BOW, BUN, BUB

3 CHOOSE A LAYOUT

EQWIF, EQWIFR

4 CHOOSE NUMBERS (OPTIONAL)

Each head cover style has its own number design to enhance the unique character of that style. See the number design for your favorite head cover style on the How to Order page (14).

Available in 3 styles and 8 classic colors.

Collared back panel allows for a secure fit.

Optional embroidered number on front.

Your logo or graphics in high quality embroidery.

Applied or embroidered accents for a classic styling.

Water-resistant, hand selected genuine leather.

Flare design "switch flap" that protects the face head and improves the fit in the cover stays on.

COBRANDED CADDIE BIBS



Customize the front and back of the bib as well as name panels with:

- Corporate Logo
- Event Logo
- Sponsors Logo

- Charity Logo
- Putter Boy Logo



STANDARD BIBS COME WITH TWO NAMES ON BACK

CUSTOM SINGLE NAME OPTION



Prices will vary from \$75-\$105 per bib depending on customization

AVAILABLE COLORS



Additional fees apply for any customization

YETI DRINKWARE



18/8 STAINLESS STEEL
Resists dents and drops.



DURACOAT™ COLOR
If your Rambler Drinkware comes in DuraCoat™ Color, rest assured it won't peel or crack.



DISHWASHER SAFE
Because no one needs more work to do.



DOUBLE-WALL VACUUM INSULATION
Keeps drinks hot (or cold) to the last drop.



14 oz.
MUG

12 oz.
COLSTER
CAN COOLER

16 oz.
STACKABLE
PINT

18 oz.
WATER
BOTTLE

26 oz.
WATER
BOTTLE

30 oz.
TRAVEL
MUG

12 oz.
KIDS WATER
BOTTLE

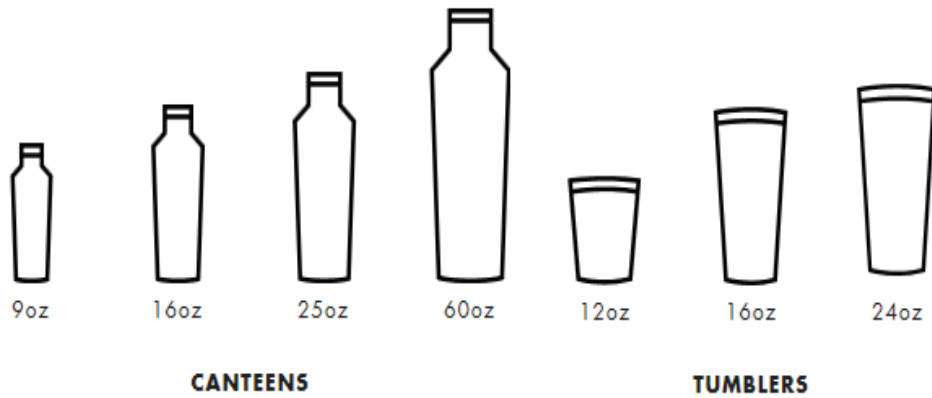
20 oz.
KIDS WATER
BOTTLE

10 oz.
WINE
TUMBLER

10 oz.
STACKABLE
LOW BALL

Cobranding is available at an additional \$10 per unit. Must order in quantities of 6. 48 Minimum

CORKCICLE DRINKWARE



CORKCICLE®



PRICING DOES NOT INCLUDE SPECIALTY COLORS & FINISHES

STACHE DRINKWARE



Stache




STERLING CUT GLASS



BAR GLASSES



WINE GLASSES



BEER GLASSES



Gift Box

Custom glassware from Sterling Cut Glass

Most items packaged as sets of two and four

Prices vary depending on style

Please contact Hanna Whisenant or
Ally Campbell for individual inquiries

Trophies & Awards



TROPHIES & AWARDS



CUSTOM PUTTER BOY
TROPHIES

Our Custom Putter Boy trophies come in two different sizes. Each has a plaque that can be customized with your logo and/or any verbiage you wish.

9" Putter Boy Trophy

6" Putter Boy Trophy



STAND UP ETCHING ON BIRCH

S - 10" x 12"

M - 12" x 15"

L - 15" x 20"

MINIMUM - 4



FRAMED ETCHING ON BIRCH

S - 10" x 12"

M - 12" x 15"

L - 15" x 20"

MINIMUM - 4



CUSTOM MAPLE AWARDS

S - 6" x 8" x 2"

L - 7" x 10" x 2"

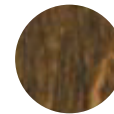
MINIMUM - 4



NATURAL
FINISH



GOLDEN
OAK



ESPRESSO



WEATHERED
OAK

TROPHIES & AWARDS



Lancaster Trophy



Tournament Cup



Camargo Cup



Meredith Vase



Rectangle Serving Tray



Fairfax Footed Bowl



Alden Hurricane Vase



Vantage Case



Fulton Round Tray



Stockton Serving Tray, Ivory

CORPORATE GIFT CARD POLICY



The quantity of gift cards needed for a corporate outing must be finalized 24 hours before your arrival to Pinehurst Resort.

Once the requested quantity is set, the value of each card will be charged to the master account or credit card provided.

Any unused gift cards that were requested cannot be credited back to the master account or credit card once they are charged.

For questions or concerns please contact our
Corporate Retail Sales Coordinator
ALLY CAMPBELL by email at
Ally.Campbell@Pinehurst.com (910-235-8706)
or by contacting our
Retail Manager – Corporate & Creative
HANNA WHISENANT by email at
Hanna.Whisenant@Pinehurst.com



FREQUENTLY ASKED QUESTIONS



WHEN DO I NEED TO PLACE MY ORDER?

Please plan on placing your orders no later than 3 weeks prior to your required in-hand date. Logo development and approvals need to be done prior to placing your order.

HOW DO I PLACE MY ORDER?

You may place your order by contacting our Retail Manager –Corporate & Creative, Hanna Whisenant by email at Hanna.Whisenant@Pinehurst.com or our Corporate Retail Sales Coordinator, Ally Campbell by email at Ally.Campbell@Pinehurst.com.

HOW DO I PAY FOR MY ORDER?

We accept all major credit cards. You may also charge your order to your master account here at the resort.

IS THERE A MINIMUM?

Sometimes due to regulations set forth through our partner vendors there is a minimum order required. In the event that there are, you will be made aware of it prior to ordering.

CAN I USE THE PUTTER BOY LOGO?

The Putter Boy logo is a registered trademark of Pinehurst Resort and can only be used on merchandise purchased through the Pinehurst Retail Department.

WHO DO I CONTACT IF I HAVE ANY QUESTIONS?

Our Retail Manager –Corporate & Creative, Hanna Whisenant by email at Hanna.Whisenant@Pinehurst.com or our Corporate Retail Sales Coordinator, Ally Campbell by email at Ally.Campbell@Pinehurst.com.

DO YOU HAVE ANY OTHER OPTIONS OTHER THAN WHAT IS IN THIS CATALOG?

Yes! We have access to several vendors that offer a wide variety of customizable merchandise.

CAN YOU SHIP ITEMS DIRECTLY TO US PRIOR TO THE EVENT?

Yes! Payment arrangements must be made at the time of ordering and must be settled prior to receiving any of the merchandise purchased.

CAN YOU SHIP ITEMS TO US OR OUR GUESTS POST EVENT?

Yes! We have the ability to drop ship your items to you pre or Post event.

We understand that sometimes you don't want your guests to have to deal with the hassle of taking back themselves on the plane. Please note that additional charges may apply. Prices will vary.