



Park Residence

Floorplans

EDITION

Park Residence

FLOOR 01

SNOWHILL



VICTORIA SQUARE



PR-109
Type 8
Two-bed
786 sqft

PR-110
Type 2
One-bed
549 sqft

PR-111
Type 4
Two-bed
829 sqft

PR-101
Type 5
Two-bed
826 sqft



JEWELLERY QUARTER

CENTENARY SQUARE



PR-108
Type 7
Two-bed
787 sqft

PR-107
Type 1
One-bed
449 sqft

PR-106
Type 3
One-bed
536 sqft

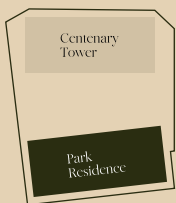
PR-105
Type 3
One-bed
531 sqft

PR-104
Type 3
One-bed
546 sqft

PR-103
Type 1
One-bed
445 sqft

PR-102
Type 6
Two-bed
759 sqft

CITY CENTRE GARDENS



Please note, the floorplans displayed are correct at the time of publication but the actual layout and arrangement of furniture are subject to changes which will not materially affect the overall size or amenity offered by the room.

EDITION

Park Residence

FLOOR 02—07

SNOWHILL



VICTORIA SQUARE

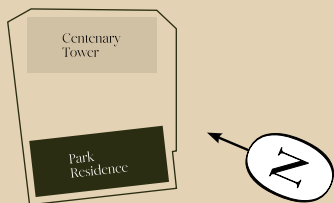


JEWELLERY QUARTER

CENTENARY SQUARE



CITY CENTRE GARDENS



Please note, the floorplans displayed are correct at the time of publication but the actual layout and arrangement of furniture are subject to changes which will not materially affect the overall size or amenity offered by the room.

EDITION

Park Residence

FLOOR 08—13

SNOWHILL

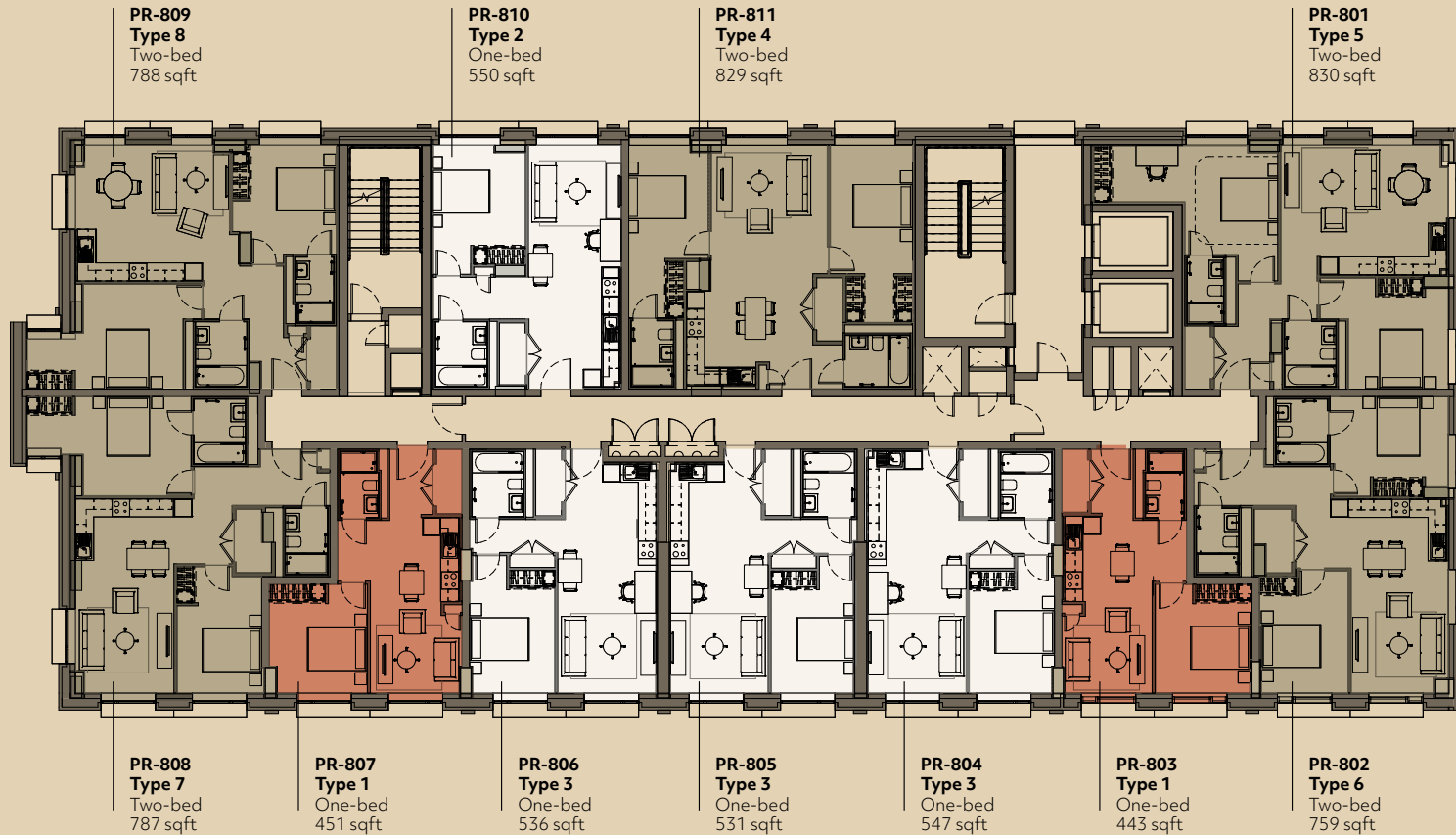


VICTORIA SQUARE

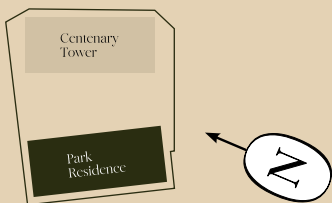


JEWELLERY QUARTER

CENTENARY SQUARE



CITY CENTRE GARDENS



Please note, the floorplans displayed are correct at the time of publication but the actual layout and arrangement of furniture are subject to changes which will not materially affect the overall size or amenity offered by the room.

EDITION

Park Residence

FLOOR 14

SNOWHILL



VICTORIA SQUARE



PR-1404
Type 8
Two-bed
788 sqft

PR-1405
Type 2
One-bed
546 sqft

PR-1406
Type 4
Two-bed
829 sqft

JEWELLERY QUARTER

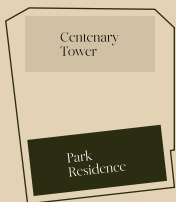
CENTENARY SQUARE

PR-1403
Type 7
Two-bed
787 sqft

PR-1402
Type 1
One-bed
451 sqft

PR-1401
Type 3
One-bed
532 sqft

CITY CENTRE GARDENS



Please note, the floorplans displayed are correct at the time of publication but the actual layout and arrangement of furniture are subject to changes which will not materially affect the overall size or amenity offered by the room.

EDITION