



EV CHARGING PEDESTAL FOR LEVEL 2 CHARGERS

INSTALLATION INSTRUCTIONS

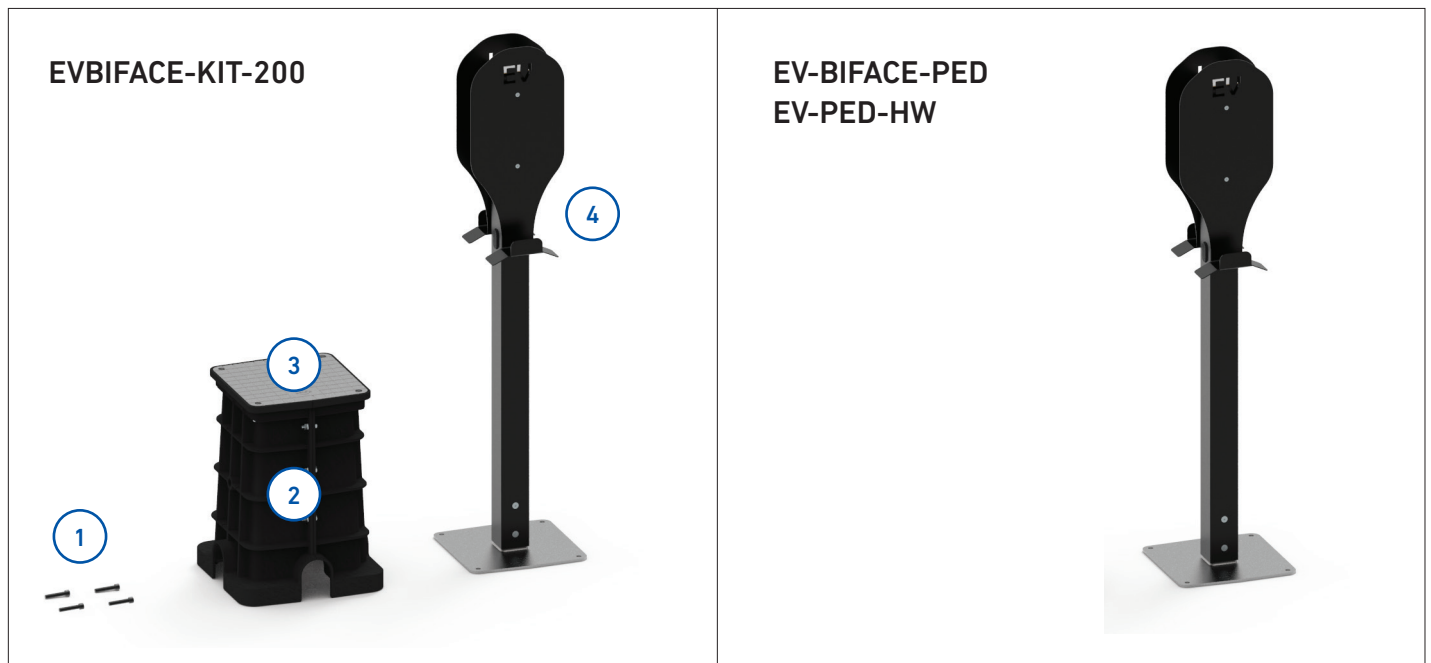


IMPORTANT SAFETY INFORMATION

READ AND COMPLETELY UNDERSTAND ALL INSTRUCTIONS BEFORE INSTALLING PRODUCT. FAILURE TO FOLLOW THESE INSTRUCTIONS MAY RESULT IN PERSONAL INJURY OR DEATH.

This product is intended for use by trained technicians only. This product should not be used by anyone who is not familiar with and not trained to use it. When working in the area of energized lines, extra care should be taken to prevent accidental electrical contact. Be sure to wear proper safety equipment per your company protocol. These instructions are not intended to supersede any company construction or safety standards. These instructions are offered only to illustrate safe installation for the individual. PLP products are intended for the specified application only. Do not modify this product under any circumstances. Do not reuse or reinstall any PLP product unless that capability is expressly indicated in the product's Installation Instructions. For proper performance and personal safety, be sure to select the proper PLP product before installation. PLP products are precision devices. To ensure proper performance, they should be stored in cartons under cover and handled carefully.

PACKAGE COMPONENTS



1. Lid Bolts (4)
2. Foundation Base
3. Cast Aluminum Lid
4. Pedestal

Tools Required:

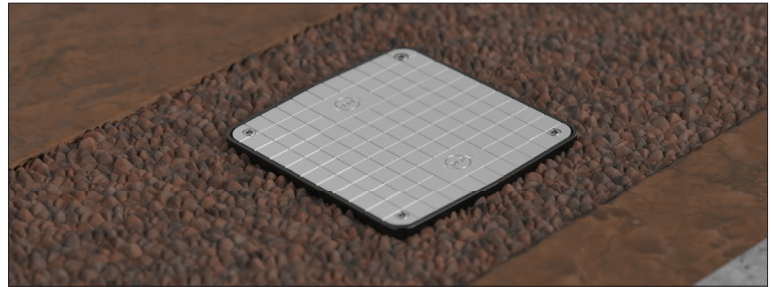
- Back hoe or shovel(s)
- M10 Allen Wrench
- Assorted drill bits

⚠ WARNING

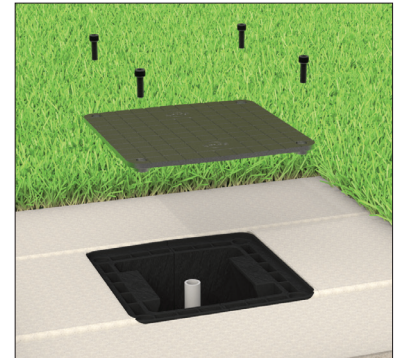
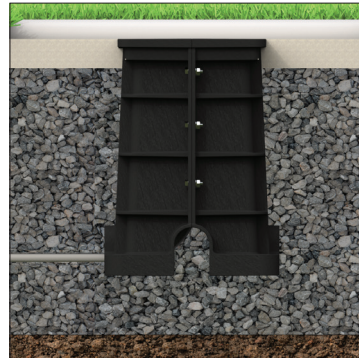
1. Always check with local codes to ensure compliance. You may need to adjust the guidelines provided here to comply with local regulations.
2. **ALWAYS CALL BEFORE YOU DIG:** 811 is the number used most in the U.S.
3. Use only qualified technicians for the task at hand. Improper installation can lead to equipment damage, injury, or even death of persons involved.
4. Follow all instructions for the charger unit being installed.

PREPARATION

If PLP's Bifacial Pedestal is being installed with PLP's EV Base, please refer to the EV Base assembly manual (**SP3682**) and complete the installation before starting installation of the Pedestal. If the Pedestal is being installed with concrete pads, please proceed to page 3.

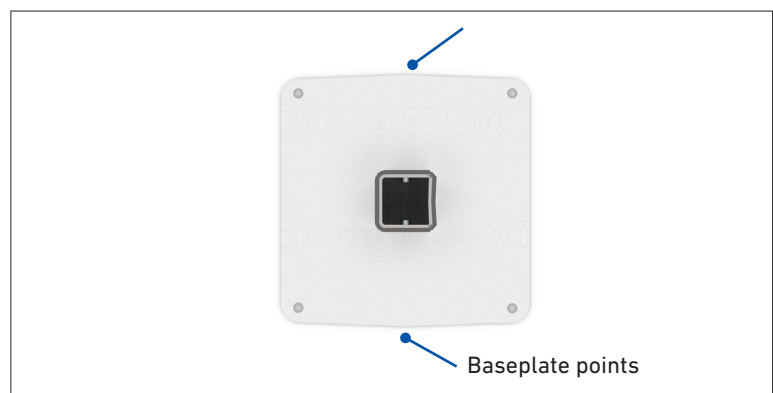


- 1 Begin by removing the 1/2" bolts that hold the aluminum lid to the EV Base Foundation. Once all four bolts are removed, lift the lid off the foundation and set aside.



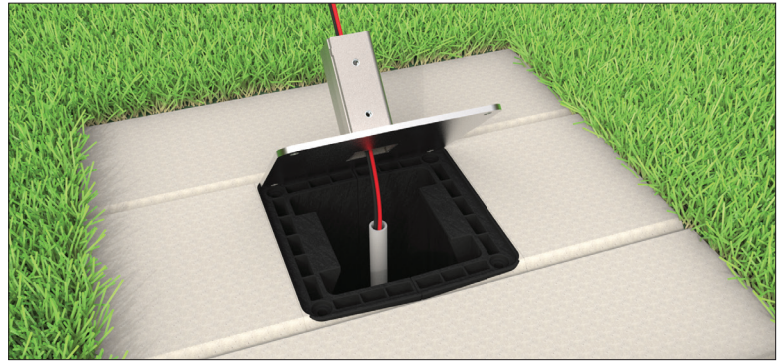
- 2 With the lid removed, place the EV Pedestal base plate onto the foundation where the lid used to be. The base plate is a 1 to 1 replacement for the lid.

NOTE: The lid and baseplate are not square and can only fit on the foundation one way. See the figure to the right. If there are fitment issues with the baseplate, lift it from the foundation and rotate it 90 degrees before placing back over the foundation.

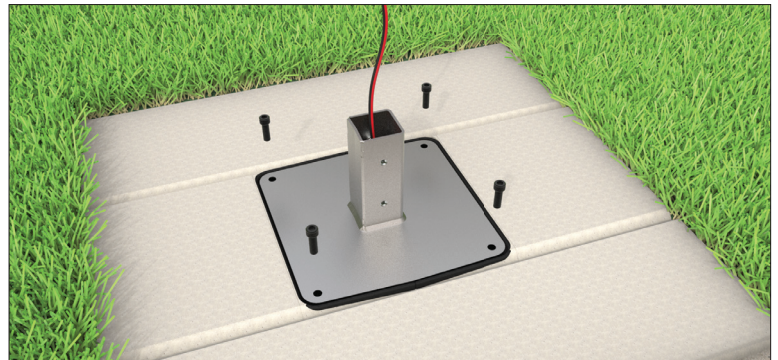


- 3** Before replacing the bolts in the EV foundation, pull enough wire through the square opening to connect to the charger dispenser unit.

NOTE: It is 38" from the bottom of the baseplate opening to the oval cut-out in the pedestal.



- 4** Use the bolts included in the Pedestal hardware package and insert them into the EV foundation in the four corners of the pedestal baseplate. Torque each bolt to 15 ft-lbs.



EV PEDESTAL INSTALLATION WITH CONCRETE PADS

There are many hardware types that can be used to install into wet or dry concrete. Check with your local permitting jurisdiction on which installation method is best for your project.

- 1A Pouring a new concrete pad:** While preparing the site for concrete, use 1/2" L or J anchors and tie them in with any rebar being used. Use the diagram from Figure 1 for the optimal placement of the anchors so the pedestal base fits appropriately. Verify the location of the conduit to make sure it is centered to fit into the pedestal baseplate.

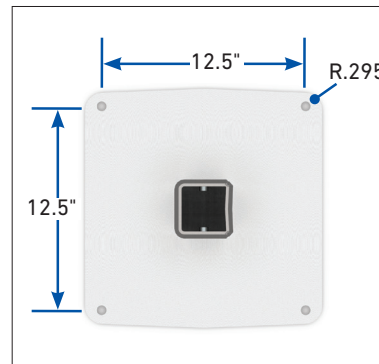
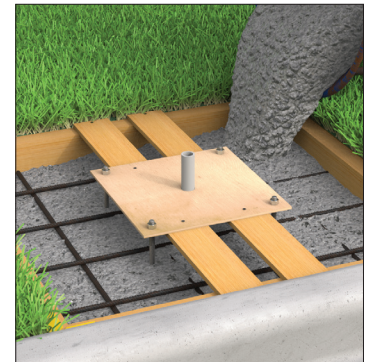
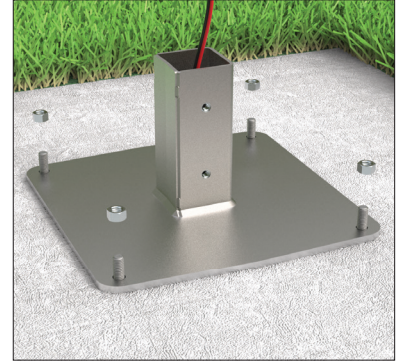


Figure 1



- 2A** After the concrete has reached its cure time, place the pedestal baseplate over the four anchor bolts and conduit run.

Make sure to pull all the wire needed to reach the connection for the EV charger dispenser unit. For an easy concrete form, use the PLP concrete pad jig, (sold separately).



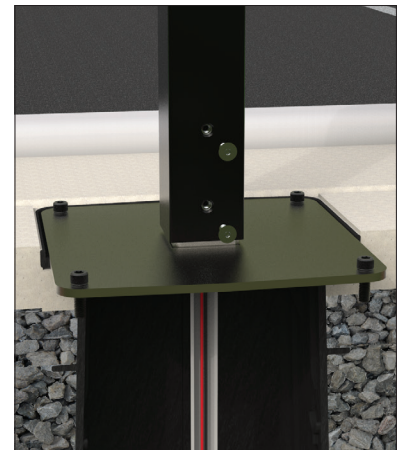
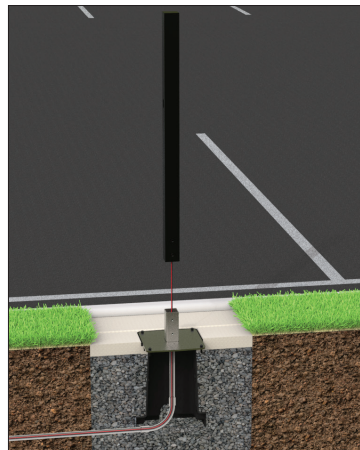
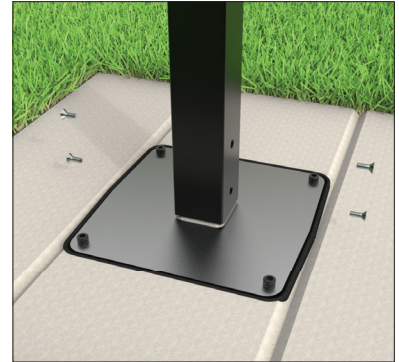
- 1B Existing concrete pad:**

Begin by removing the EV Pedestal baseplate from the packaging and placing it on the concrete pad. Position the plate in the installation area and mark the locations of the mounting holes onto the concrete. Remove the plate and drill pilot holes using the appropriate masonry drill bit for your desired concrete anchors. Finish the installation by following the concrete anchor manufacturer's guidelines.



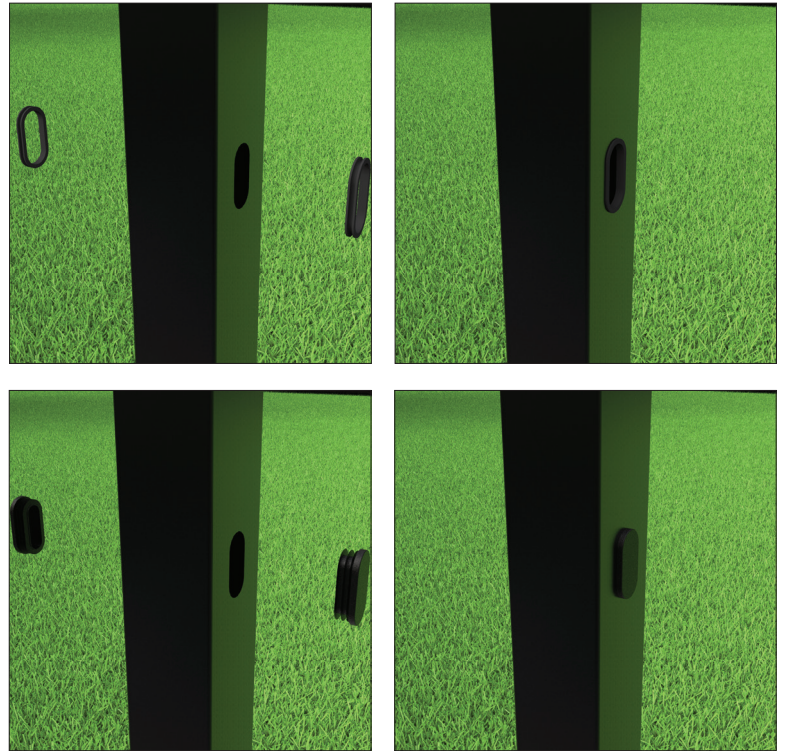
- 5** With the base plate mounted, the pedestal is ready for assembly. Place the 3.5" x 3.5" pole over the stud in the baseplate, lining up the holes at the base of the pole with the holes in the stud.

Use the provided 3/8" hardware to secure the pole to the baseplate. Torque the bolts to 20 ft-lbs.

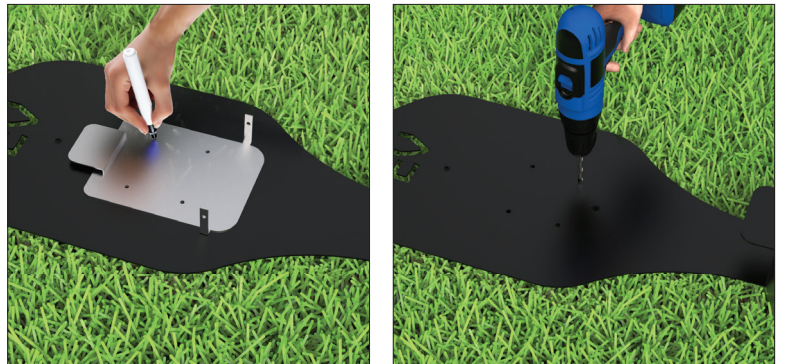


- 6 Prepare the pole for routing the electrical wires by placing the provided plugs or grommets into the precut holes of the vertical pole.

Two grommets are included in the kit for mounting the chargers in a bifacial configuration. Also included are plugs that can be inserted if only one charger is being mounted on the vertical pole.



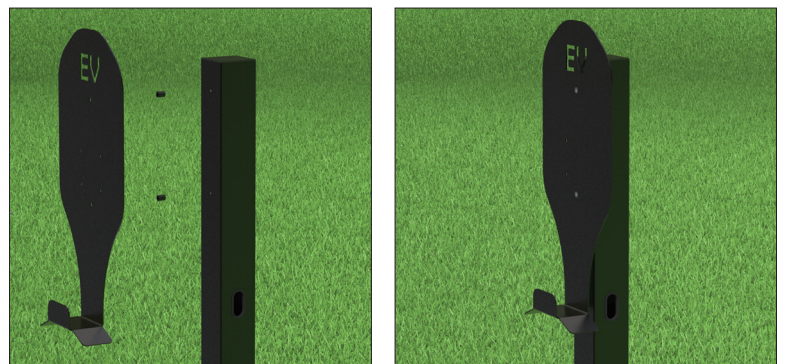
- 7 To mount the chargers to the faceplates, the mounting holes must be drilled using the charger mounting template. Mark the hole locations on the faceplate and drill according to the charger manufacturer's specifications.



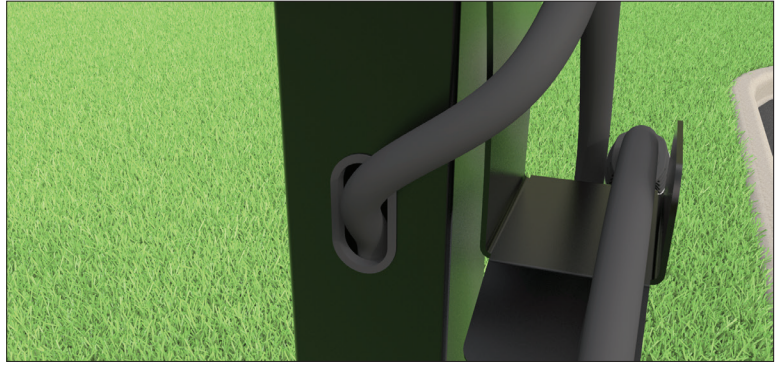
- 8 Next, the charger mounting faceplates can be attached to the vertical pole. The hardware kit includes a 1/4" bolt, washer, and spacer to fasten the faceplate to the pole. Be sure to place the spacer and washer between the vertical pole and the faceplate when tightening the 1/4" bolt.

Torque to 6 ft-lbs.

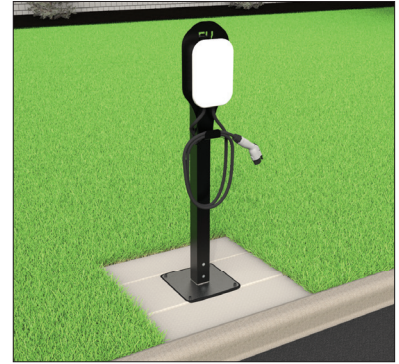
This step can be repeated for the second faceplate if mounting two chargers.



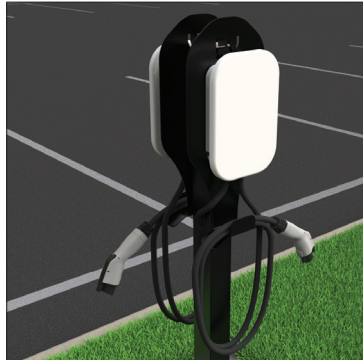
- 9 Continue the installation by connecting the EV dispenser unit to the power source electrical cables and routing the wires into the vertical pole.



- 10 Finish the installation by mounting the charger to the faceplate according to the charger manufacturer's specifications.



- 11 Completed foundation installation, with an attached charger.







GLOBAL HEADQUARTERS
660 BETA DRIVE
CLEVELAND, OH 44143

+1 440 461 5200
EV@PLP.COM
PLP.COM