



UNASSEMBLED EV CHARGING STATION FOUNDATION

FOR LEVEL 3 CHARGERS

INSTALLATION INSTRUCTIONS

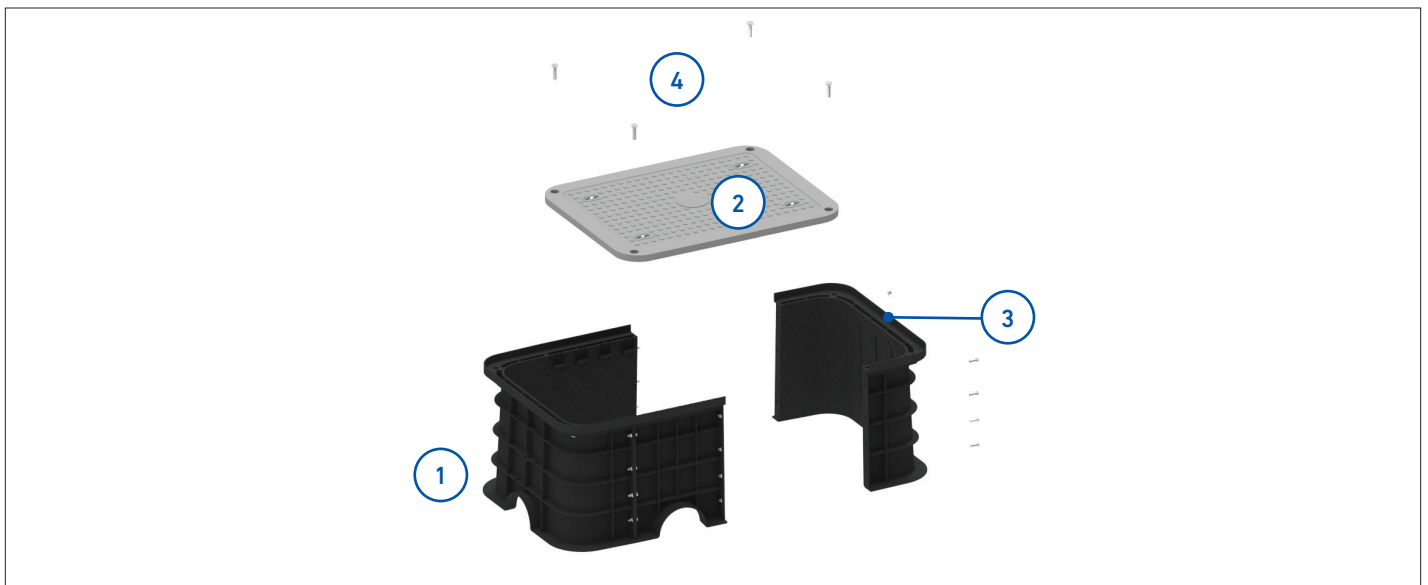


IMPORTANT SAFETY INFORMATION

READ AND COMPLETELY UNDERSTAND ALL INSTRUCTIONS BEFORE INSTALLING PRODUCT. FAILURE TO FOLLOW THESE INSTRUCTIONS MAY RESULT IN PERSONAL INJURY OR DEATH.

This product is intended for use by trained technicians only. This product should not be used by anyone who is not familiar with and not trained to use it. When working in the area of energized lines, extra care should be taken to prevent accidental electrical contact. Be sure to wear proper safety equipment per your company protocol. These instructions are not intended to supersede any company construction or safety standards. These instructions are offered only to illustrate safe installation for the individual. PLP products are intended for the specified application only. Do not modify this product under any circumstances. Do not reuse or reinstall any PLP product unless that capability is expressly indicated in the product's Installation Instructions. For proper performance and personal safety, be sure to select the proper PLP product before installation. PLP products are precision devices. To ensure proper performance, they should be stored in cartons under cover and handled carefully.

PACKAGE COMPONENTS



1. Foundation Base
2. Lid
3. Sidewall Bolts with Flange Nuts (16)
4. Lid Bolts (4)

Tools Required:

- 3/4" and 1-1/8" socket for hex head bolts

⚠ WARNING

1. Always check with local codes to ensure compliance. You may need to adjust the guidelines provided here to comply with local regulations.
2. **ALWAYS CALL BEFORE YOU DIG:** 811 is the number used most in the U.S.
3. Use only qualified technicians for the task at hand. Improper installation can lead to equipment damage, injury, or even death of persons involved.
4. Follow all instructions for the charger unit being installed.

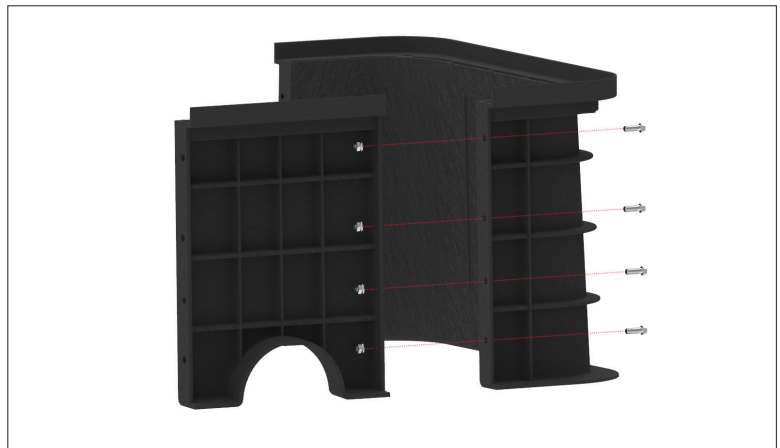
PREPARATION

- 1 Each pallet of unassembled units contains enough parts for two foundations. Begin assembly by removing the sidewalls and middle pieces from the pallet to uncover the lids.



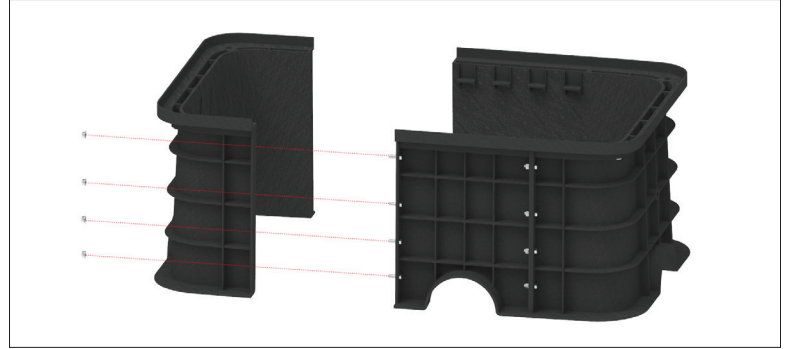
- 2 Take one of the curved end pieces and a flat sidewall piece and stand them next to each other. When sitting on a flat surface, the conduit archways should be positioned at the bottom, towards the floor.

When positioning the side wall against the curved end section, be sure that the bolt holes line up properly. Once aligned, begin inserting the 1/2" bolts through the holes and hand-tighten the 1/2" flange nuts. Repeat this process for each of the four bolt holes. Leave the hardware sets and hand-tighten for now. Repeat this process for the second sidewall.



- 3 Next, place the second end piece in position by lining up the bolt holes with the installed sidewall sections. Once aligned, begin inserting the 1/2" bolts through the holes and hand-tighten the 1/2" flange nuts. Repeat this process for each of the four bolt holes. Leave the hardware sets and hand-tighten for now.

Moving to the opposite sidewall, repeat the installation of the hardware for each of the four holes.

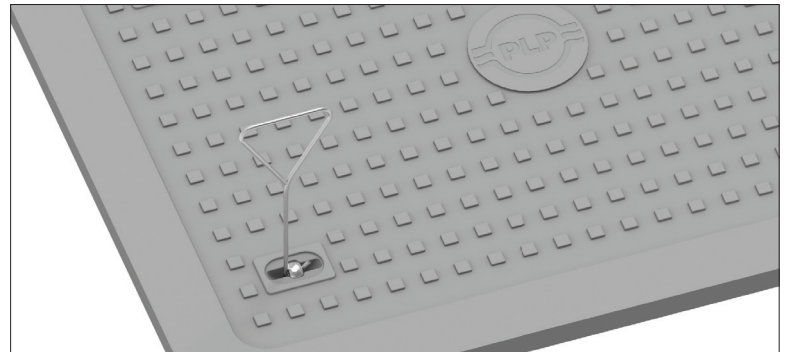


- 4 Using a torque wrench, tighten down all of the 1/2" hardware to 30 ft-lbs. There are 16 sets of hardware in total.

- 5 The foundation assembly is now ready for the lid to be installed.

NOTE: Now is a good time to measure, drill, and install the hardware needed for installation of the EV charger or any accessories, such as bollards. Please refer to the PLP installation instructions (**SP3742**) for more information.

Insert the supplied lift hooks into the eye bolts pre-installed in the lid. Lift the lid on top of the assembled end cap and sidewalls. Ensure that the lid is sitting flat on the end caps and sidewalls, adjust as needed.

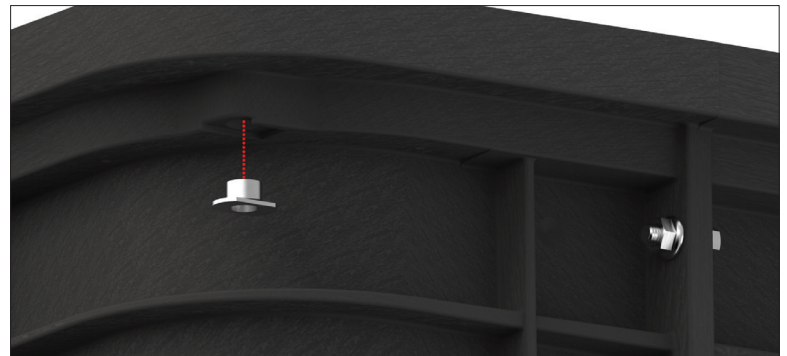


CAUTION

The lid may be inverted after delivery. With two people, the lid can be lifted and rotated to expose the eye bolt lifting points.

- 6 Before fastening the lid in place, four T-nuts need to be installed in each corner of the curved end pieces. The holes for the T-nuts are specially molded with ribs to help the T-nuts hold position. Each nut can be pressed into place by hand or lightly tapped with a mallet until the nut is completely seated.

Repeat this process for each corner.



7

The 3/4" lid bolts can be installed by inserting them into the bolt holes at the corners of the foundation. Begin threading the bolts into the threaded T-nuts by hand. Once the threads are started, a wrench or impact driver can be used to fully tighten.

Repeat this process for each corner bolt hole. Finish the installation by torquing the bolts to 120 ft-lbs with a torque wrench.

