

COYOTE[®] HD DOME CLOSURE

The **COYOTE HD (High-Density) Dome Closure** offers an alternative fiber organizer to support high-density splice applications within the same footprint as PLP's existing 9.5" x 28" COYOTE Dome Closure. The new organizer architecture provides open access for fiber routing, reduces cable sheath openings, and simplifies assembly: all factors that save you time and money. When combined with PLP's patented segmented end plate design, the closure system offers the ultimate level of flexibility to address your complex network needs.

FEATURES AND BENEFITS

- Maximum Splice Capacity of 1728 or 3456 depending on cable construction
- 7-Port segmented end plate design provides independent access to each cable port without disrupting surrounding cables
- Two splice tray designs to support mass fusion splicing, single fusion, or a combination of both
- Modular tray design permits trays to hinge upward or be removed from the stack to allow multiple splicers to work simultaneously
- Grommet range now accepts fiber optic cable entry of up to 1.38" in diameter
- Designed and tested in accordance with Telcordia[®] GR-771-CORE Buried, Underground, IP-68 Rated Requirement

FOR CABLES UNDER 1.25" IN DIAMETER

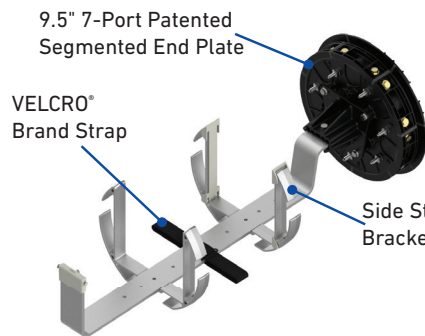
Specifications	No Slack Basket	Standard Slack Basket	Deep Metal Slack Basket
Catalog Number	80061406	80061407	80061594
Splice Capacity (Maximum) – Single Fusion (Thin, 80813123), Mass Fusion (Thin, 80813122), Mass Fusion (Deep, 80813121), Mass Fusion (Deep, 80813779)	864, 3456 ¹ , 1728, 3456	576, 2304 ¹ , 1152, 2304	432, 1728 ¹ , 864, 1728
Number of Splice Trays – 80813123, 80813122 ¹ , 80813121, 80813779	12, 12, 6, 6	8, 8, 4, 4	6, 6, 3, 3
Cable Ports ²	7		
Cable Diameters	0.093" – 1.25" (2.4 – 31.8 mm) and Flat Drop		
Ground Studs	7		
Configuration	Butt		
Application	Direct Bury, Below Grade, Pole/Wall, Aerial		
Ingress Protection	In accordance with Telcordia® GR-771-CORE, Buried, Underground; IP-68		
Size ³	13.3" W x 29.4" L (338 x 747 mm)		

¹ The 80813122 thin-profile splice tray can only be used for cables that contain SpiderWeb Ribbon (SWR®) – AFL, Rollable Ribbon (RR) – OFS, Pliable Ribbon – Sumitomo, or FlexRibbon™ – Prysmian

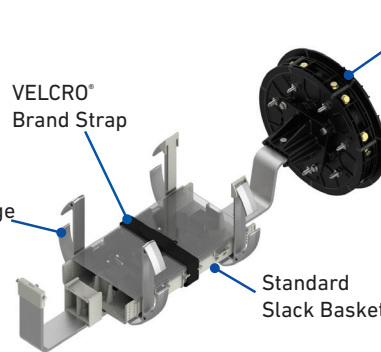
² Multi-hole grommets allow for more than one cable to enter each cable port.

³ Outermost part of the assembly.

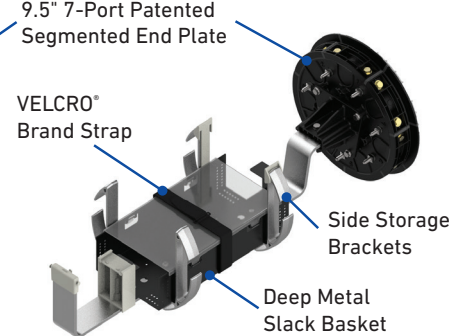
ORGANIZER ASSEMBLIES



Ribbon Organizer – No Slack Basket
Catalog Number: **80061406**



Ribbon Organizer – Standard Slack Basket
Catalog Number: **80061407**



Ribbon Organizer – Deep Metal Slack Basket
Catalog Number: **80061594**

COYOTE HD Dome Closure Kit Contents

Catalog Number	Description
80061406	COYOTE HD Dome Closure for Ribbon – Includes (2) 1-Hole Grommets 0.85" – 1.00" (21.6 – 25.4 mm) and (2) 1-Hole Grommets 1.00" – 1.25" (25.4 – 31.8 mm)
80061407	COYOTE HD Dome Closure with Slack Basket for Ribbon – Includes (2) 1-Hole Grommets 0.85" – 1.00" (21.6 – 25.4 mm), (2) 1-Hole Grommets 1.00" – 1.25" (25.4 – 31.8 mm), and (1) 6-Pack, 36" long of 0.25" ID Transition Tubing
80061594	COYOTE HD Dome Closure with Deep Metal Slack Basket for Ribbon – Includes (2) 1-Hole Grommets 0.85" – 1.00" (21.6 – 25.4 mm), (2) 1-Hole Grommets 1.00" – 1.25" (25.4 – 31.8 mm), and (1) 6-Pack, 36" Long of 0.25" ID Transition Tubing

All kits include (1) COYOTE HD End Plate Organizer, (1) Dome, (1) Gasket, (1) Collar, (4) 1-Hole Grommets, (1) 12-Pack of 20" Long 0.50" ID Spiral Tubing, and Cable Restraint Hardware.



FOR CABLES OVER 1.25" IN DIAMETER

Specifications	No Slack Basket	Standard Slack Basket
Catalog Number	80061408	80061409
Splice Capacity (Maximum) – Single Fusion (Thin, 80813123), Mass Fusion (Thin, 80813122), Mass Fusion (Deep, 80813121), Mass Fusion (Deep, 80813779)	864, 3456 ¹ , 1728, 3456	576, 2304 ¹ , 1152, 2304
Number of Splice Trays – 80813123, 80813122 ¹ , 80813121, 80813779	12, 12, 6, 6	8, 8, 4, 4
Cable Ports ²	7	
Cable Diameters ³	0.093" – 1.38" (2.4 – 35.0 mm) and Flat Drop	
Ground Studs	7	
Configuration	Butt	
Application	Direct Bury, Below Grade, Pole/Wall, Aerial	
Ingress Protection	In accordance with Telcordia® GR-771-CORE, Buried, Underground; IP-68	
Size ⁴	13.3" W x 29.4" L (338 x 747 mm)	

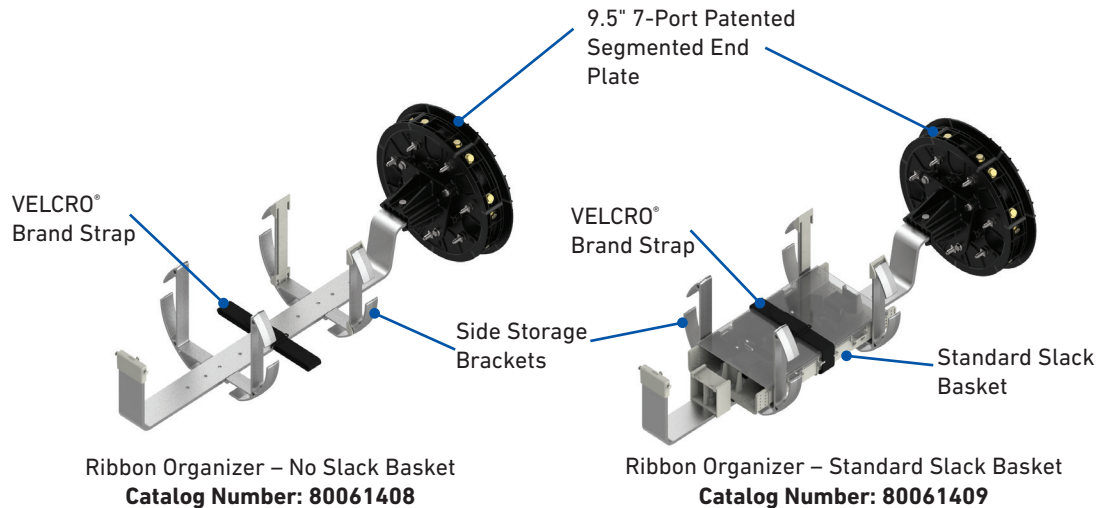
¹ The 80813122 thin-profile splice tray can only be used for cables that contain SpiderWeb Ribbon (SWR®) – AFL, Rollable Ribbon (RR) – OFS, Pliable Ribbon – Sumitomo, or FlexRibbon™ – Prysmian

² Multi-hole grommets allow for more than one cable to enter each cable port.

³ Cables with diameters larger than 1.25" can only be used in end plate port numbers 3 and 6.

⁴ Outermost part of the assembly; includes the sealing collar.

ORGANIZER ASSEMBLIES



COYOTE HD Dome Closure Kit Contents

Catalog Number	Description
80061408	COYOTE HD Dome Closure for Ribbon – Includes (2) 1-Hole Grommets 1.00" – 1.25" (25.4 – 31.8 mm) and (2) 1-Hole Grommets 1.25" – 1.38" (31.8 – 35.0 mm)
80061409	COYOTE HD Dome Closure with Slack Basket for Ribbon – Includes (2) 1-Hole Grommets 1.00" – 1.25" (25.4 – 31.8 mm), (2) 1-Hole Grommets 1.25" – 1.38" (31.8 – 35.0 mm), and (1) 6-Pack, 36" long of 0.25" ID Transition Tubing

All kits include (1) COYOTE HD End Plate Organizer, (1) Dome, (1) Gasket, (1) Collar, (4) 1-Hole Grommets, (1) 12-Pack of 20" Long 0.50" ID Spiral Tubing, and Cable Restraint Hardware.

Telcordia® is a registered trademark of Telcordia Technologies, Inc. now part of Ericsson. SWR® is a registered trademark of AFL. FlexRibbon™ is a registered trademark of Prysmian.

VELCRO® Brand is a registered trademark of Velcro BVBA.

BUFFER TUBE APPLICATIONS

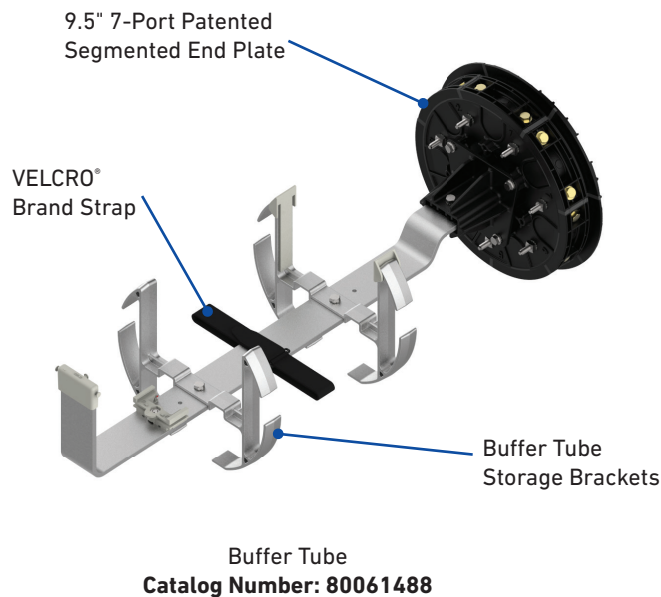
Specifications

Catalog Number	80061488
Splice Capacity (Maximum) – Single Fusion (Thin, 80813123, 72 CT.), Single Fusion (Thin, 80813301, 108 CT.)	576, 864
Number of Splice Trays – 80813123, 80813301	8, 8
Cable Ports ¹	7
Cable Diameters	0.093" – 1.25" (2.4 – 31.8 mm) and Flat Drop
Ground Studs	7
Configuration	Butt
Application	Direct Bury, Below Grade, Pole/Wall, Aerial
Ingress Protection	In accordance with Telcordia® GR-771-CORE, Buried, Underground; IP-68
Size ²	13.3" W x 29.4" L (338 x 747 mm)

¹ Multi-hole grommets allow for more than one cable to enter each cable port.

² Outermost part of the assembly; includes the sealing collar.

BUFFER TUBE ORGANIZER ASSEMBLY



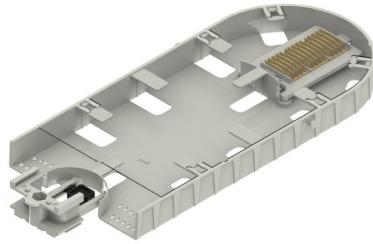
COYOTE HD Dome Closure Kit Contents for Buffer Tube Applications

Catalog Number	Description
80061488	COYOTE HD Dome Closure for Single Fusion – Includes (2) 1-Hole Grommets 0.60" – 0.85" (15.2 – 21.6 mm), (2) 1-Hole Grommets 0.85" – 1.00" (21.6 – 25.4 mm)

All kits include (1) COYOTE HD End Plate Organizer, (1) Dome, (1) Gasket, (1) Collar, (4) 1-Hole Grommets, and Cable Restraint Hardware

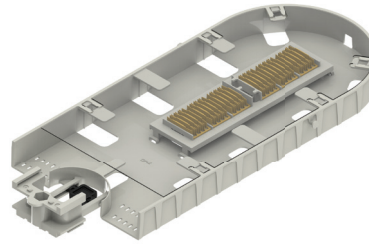


ACCESSORIES



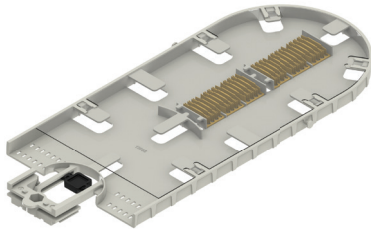
Deep Profile Mass Fusion Flip Tray
288 Splice CT.

Catalog Number: 80813121



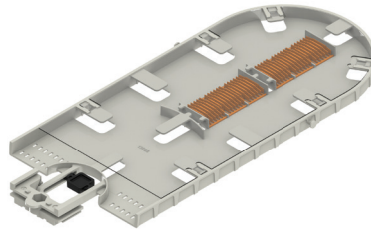
Deep Profile Mass Fusion Flip Tray
576 Splice CT.

Catalog Number: 80813779



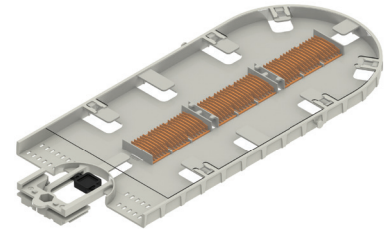
Thin Profile Mass Fusion Flip Tray
288 Splice CT.

Catalog Number: 80813122



Thin Profile Single Fusion Flip Tray
72 Splice CT.

Catalog Number: 80813123



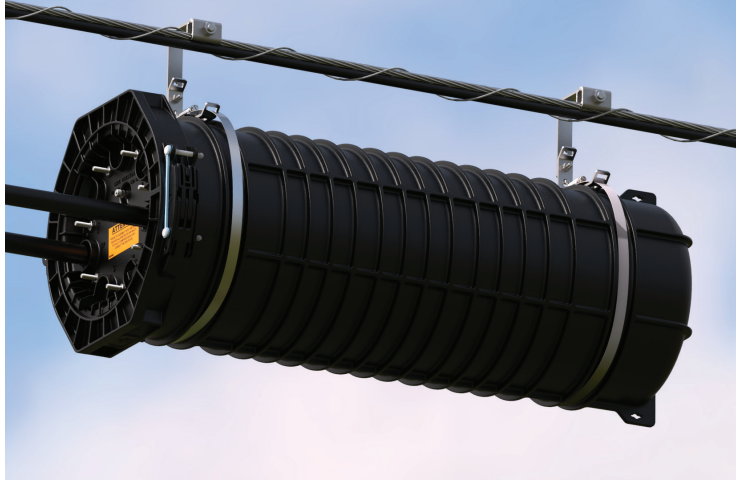
Thin Profile Single Fusion Flip Tray
108 Splice CT.

Catalog Number: 80813301

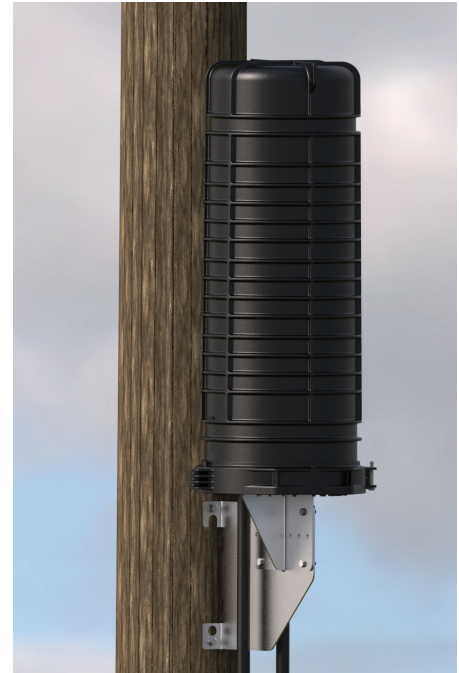
COYOTE HD Dome Closure Accessories

Catalog Number	Description
80813121	Deep Profile Mass Fusion Flip Tray, 288 CT.
80813779	Deep Profile Mass Fusion Flip Tray, 576 CT.
80813122	Thin Profile Mass Fusion Flip Tray, 288 CT.
80813123	Thin Profile Single Fusion Flip Tray, 72 CT.
80813301	Thin Profile Single Fusion Flip Tray, 108 CT.
8004160	Heat Shrink Splice Protector Kit – Includes (50) 40 mm Mass Fusion
8004095	Heat Shrink Splice Protector Kit – Includes (50) 40 mm Single Fusion
8003717	Heat Shrink Splice Protector Kit – Includes (50) 60 mm Single Fusion
80813770	Shallow Slack Basket Kit for up to 432 Expressed Mass Fusion Applications
80813267	Deep Slack Basket (2.85" Deep) Kit for up to 864 Expressed Ribbon Applications. For the COYOTE HD (High-Density) Dome Closure and the COYOTE HD Stainless Steel Splice Case Only.
80061500	Breakout Kit for Unitube Ribbon Applications
COYEPFIX1	End Plate Fixture Assembly for 6.5" and 9.5" Domes
8003839	End Plate Kit for 9.5" Domes for cables under 1.25"
80061477	Latching Collar and End Plate Gasket for 9.5" Domes
80061201	Breakaway Bonding Plate for 9.5" Domes
80809205	Strength Member Bracket Kit – Includes (2) Short L-Brackets
800015236	Strength Member Bracket Kit – Includes (3) Long L-Brackets and (3) Hose Clamps
80808651	Strength Member Bracket Kit – Includes (4) Long L-Brackets
80813361	Extended Strength Member Bracket Kit for Large Central Strength Members – Includes (2) Long L-Brackets and Lugs
80813124	Splice Tray Locking Pin Kit – Includes (5) Tray Locking Pins
80813125	Splice Tray Tether Kit – Includes (6) Splice Tray Tether Straps

MOUNTING BRACKETS



Adjustable Aerial Offset Mounting Bracket for Strand Applications
Catalog Number: 8004037



Pole/Wall Mounting Bracket
Catalog Number: 8003942

2

DOME CLOSURES

COYOTE HD Dome Closure Mounting Brackets

Catalog Number	Description
8003940	Aerial Mounting Bracket – Strand Applications
8004037	Aerial Adjustable Offset Mounting Bracket – Strand Applications
8003869	Aerial Mounting Bracket – ADSS Applications
8004038	Aerial Adjustable Offset Mounting Bracket – ADSS Applications
8003942	Pole/Wall Mounting Bracket
8003835	Universal Mounting Bracket – Handhole Applications
8003941	Swing Arm for Handhole Applications
8004003	Manhole Support Bracket