

COYOTE® 9.5" DOME CLOSURES WITH FIBERLIGN® CRB SYSTEM FOR OPGW

The **FIBERLIGN Cable Restraint Bracket (CRB) System** provides a secure method for retaining OPGW cables and maintaining a stable connection when mounting COYOTE Dome Closures directly to a tower structure, vertical cable storage bracket, or within the COYOTE Defender. The combination of the FIBERLIGN OPGW CRB and the COYOTE Dome closure's patented segmented end plate design and versatile grommet sealing system make this product the ideal choice for OPGW splice applications.

FEATURES AND BENEFITS

- CRB provides superior cable retention and torque resistance, along with electrical continuity
- Flippable, adjustable keepers of the CRB allow for a wide range of OPGW cable diameters to be secured in COYOTE Dome Closures, eliminating the need for costly cable connectors and an abundance of inventory
- CRB keepers are knurled for increased retention of OPGW cables
- CRB is factory installed onto specified COYOTE Dome Closures kitted with the necessary materials for preparing, routing, and splicing two OPGW cables
- The patent-pending 9.5" Dome Closure CRB modular design can secure two OPGW cables initially and an additional four OPGW cables with optional interlocking single-port OPGW CRBs
- The CRB is designed to easily attach to the SLACKLOOP® 60" Cable Storage through the included mounting adapter bracket within each kit

SPECIFICATIONS

9.5" FIBERLIGN CRB System

Characteristic	Specification
Closure Sizes	9.5" x 19" and 9.5" x 28" COYOTE Dome Closures
Number of Restraints	2 initially; up to 6 with optional single port CRBs
Cable Range	0.360" – 1.100" (9.1 - 27.9 mm)

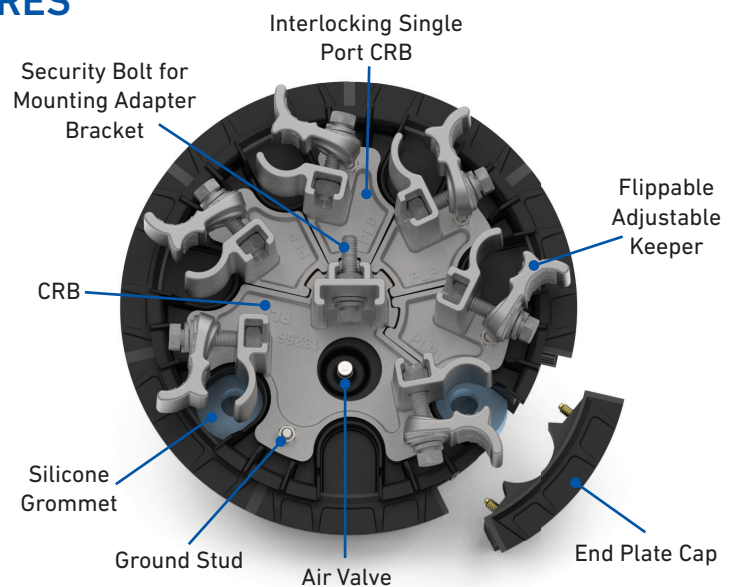
9.5" COYOTE Dome Closures

- Multi-hole grommets allow more than one cable to enter each cable port of the splice closures.
- Size of the splice closure is based on the outmost parts of the assembly including the sealing collar and the OPGW CRB.

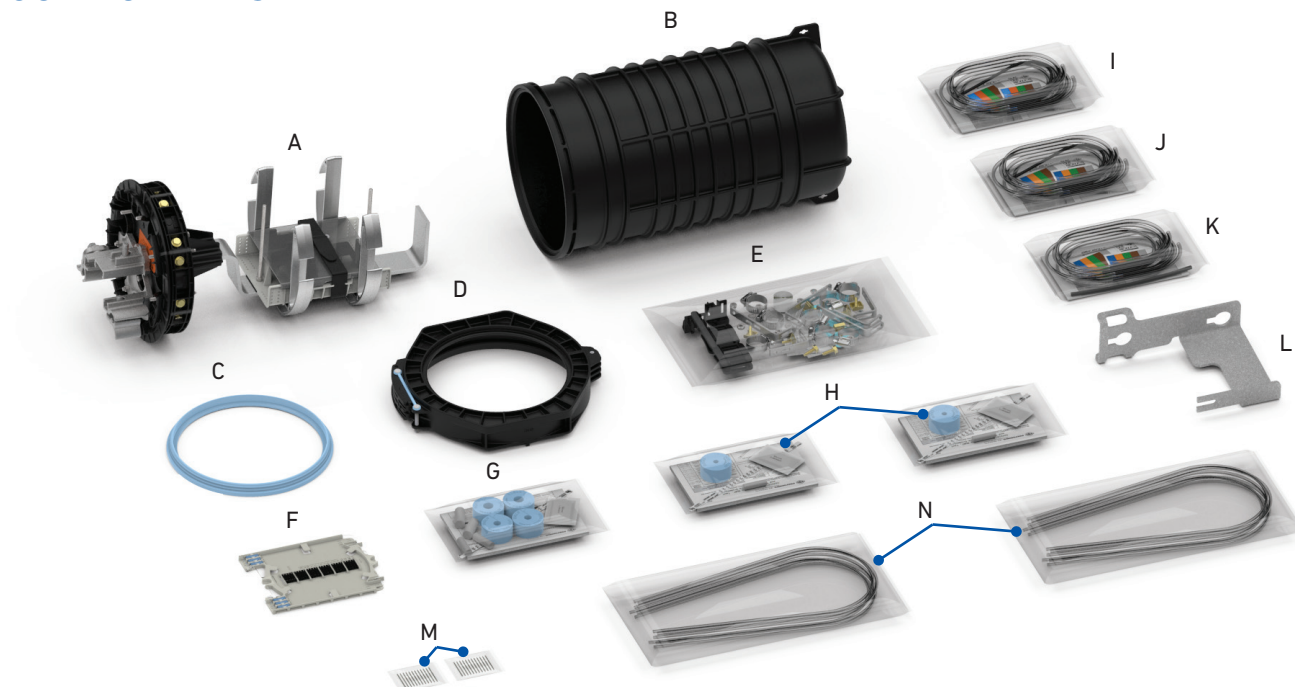
Closure	9.5" x 19" Dome		9.5" x 28" Dome	
Buffer Tube Type	Plastic	Stainless Steel	Plastic	Stainless Steel
Catalog Number	COYW919P001	COYW919S001	COYW928P001	COYW928S001
Maximum Splice Tray Capacity	12 (Catalog Number: 80809958)		6 (Catalog Number: LGSTS72)	
Maximum Splice Capacity (Single Fusion)	288		432	
Cable Ports	6 (7th port of the end plate is unable to be used due to the positioning of the CRB)			
Cable Diameters (OPGW & ADSS)	0.36" – 1.10" (9.1 - 27.9 mm)			
Ground Studs	7			
Configuration	Butt			
Applications	Pole/Wall & Aerial			
Ingress Protection	IP-67			
Size	11.5" W x 20.4" L (292 x 510 mm)		11.5" W x 29.5" L (292 x 749 mm)	

CLOSURE END PLATE & CRB FEATURES

- PLP's patented segmented end plate system allows independent access to each cable port without disrupting surrounding cables.
- The sealing system created by the compression of the end plate caps against the COYOTE silicone grommets is designed to provide a secure seal around a variety of cable profiles.
- The CRB secures up to 6 OPGW cables at the exterior face of the end plate while L-bracket cable restraint hardware secures cables and strength members at the interior face of the end plate.
- The CRB connects all seven ground studs of the end plate allowing all cables entering the closure to be bonded together through the use of the interior L-bracket cable restraint hardware.
- The captive security bolt of the CRB secures the mounting adapter bracket in place.



COMPONENTS



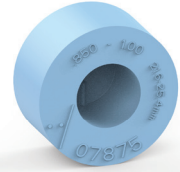
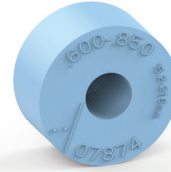
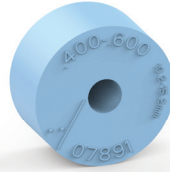
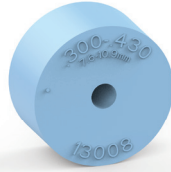
9.5" COYOTE Dome Closures with FIBERLIGN CRB System

Component	9.5" x 19" Dome Closure	9.5" x 28" Dome Closure
A	9.5" x 19" Dome Closure Plastic Buffer Tube Organizer or Stainless Steel Buffer Tube Organizer (Shown Above)	9.5" x 28" Dome Closure Plastic Buffer Tube Organizer or Stainless Steel Buffer Tube Organizer
B	9.5" x 19" Dome Cover (Shown Above)	9.5" x 28" Dome Cover
C	9.5" Dome End Plate Gasket	
D	9.5" Dome Collar	
E	Small Parts Bag for 9.5" Dome Closures with FIBERLIGN® CRB System – Includes OPGW Sealant and Interior Cable Restraint Brackets	
F	COYOTE LITE-GRIP® Short Low Profile 24 CT. Splice Tray (Catalog Number: 80809958) - Shown Above	COYOTE LITE-GRIP® Long Deep Profile 72 CT. Splice Tray (Catalog Number: LGSTS72)
G	Grommet Kit of (2) 1-Hole Grommets for 0.40" – 0.60" Cable Diameters (2) 1-Hole Grommets for 0.60" – 0.85" Cable Diameters	
H	1-Hole Grommet Kit for 0.30" – 0.43" Cable Diameters	
I	Transition Furcation Tube Kit for Stainless Steel Buffer Tube 0.102" – 0.110" (2.6 – 2.8 mm) OD Range	
J	Transition Furcation Tube Kit for Stainless Steel Buffer Tube 0.118" – 0.126" (3.0 – 3.2 mm) OD Range	
K	Transition Furcation Tube Kit for Stainless Steel Buffer Tube 0.133" – 0.154" (3.4 – 3.9 mm) OD Range	
L	Mounting Adapter Bracket for 9.5" OPGW CRB	
M	12 Packs of 40 mm Single-Fusion Heat Shrink Splice Protectors (Shown Above)	36 Packs of 40 mm Single-Fusion Heat Shrink Splice Protectors
N	Transport Tubing Kits	

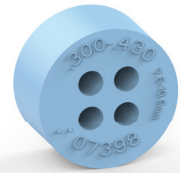
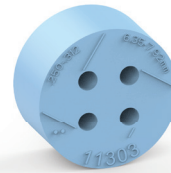
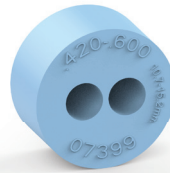
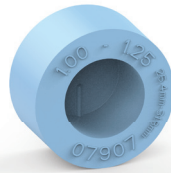
• Furcation kits and transport tube kits are only included in closure kits for stainless steel buffer tube applications.

ACCESSORIES

Silicone Grommet Kits for COYOTE 9.5" Dome Closures

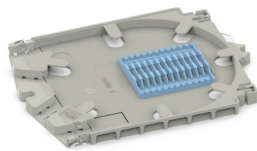


Catalog Number	8004151	8003691	8003692	8003693
in	0.30 – 0.43	0.40 – 0.60	0.60 – 0.85	0.85 – 1.00
mm	7.6 – 10.9	10.2 – 15.2	15.2 – 21.6	21.6 – 25.4

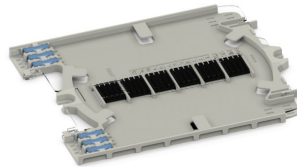


Catalog Number	8003694	8003663	8004065	8003664
in	1.00 – 1.25	0.42 – 0.60	0.250 – 0.312	0.30 – 0.43
mm	25.4 – 31.8	10.7 – 15.2	6.4 – 7.9	7.6 – 10.9

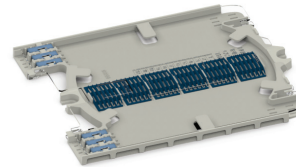
Splice Tray Kits for 9.5" x 19" COYOTE Dome Closures



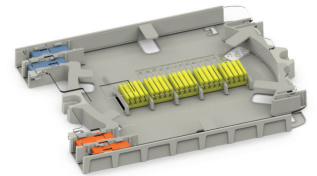
COYOTE Legacy Short
Standard Profile 12 CT. Splice
Tray for Single Fusion Splices
(Catalog Number: 80806033)



COYOTE LITE-GRIP® Short
Low Profile 24 CT. Splice Tray
for Single Fusion Splices
(Catalog Number: 80809958)

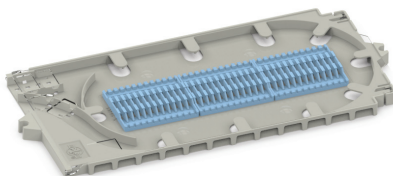


COYOTE LITE-GRIP® Short
Low Profile 36 CT. Splice Tray
for Single Fusion Splices
(Catalog Number: 80813152)

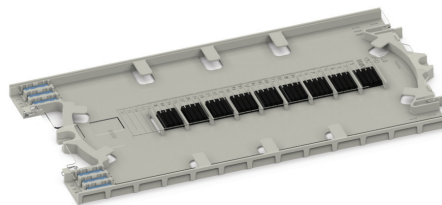


COYOTE LITE-GRIP® Short
Deep Profile 40 CT. Splice Tray
for Single Fusion Splices
(Catalog Number: 80808945)

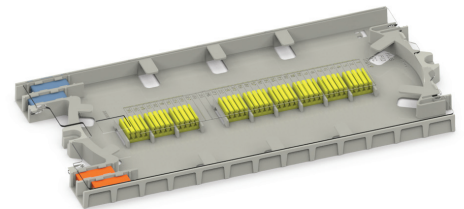
Splice Tray Kits for 9.5" x 28" COYOTE Dome Closures



COYOTE Legacy Long
Standard Profile 36 CT. Splice
Tray for Single Fusion Splices
(Catalog Number: 80805514)



COYOTE LITE-GRIP® Long
Standard Profile 36 CT. Splice
Tray for Single Fusion Splices
(Catalog Number: 80810086)



COYOTE LITE-GRIP® Long
Deep Profile 72 CT. Splice Tray
for Single Fusion Splices
(Catalog Number: LGSTS72)



ACCESSORIES

Installation Materials

Catalog Number	Description
80813629	Interlocking Single Port CRB for OPGW – Includes (1) "L" Bracket for interior cable restraint
800011212	Furcation Kit – Stainless Steel Buffer Tubes 0.133" – 0.154" OD
800011381	Furcation Kit – Stainless Steel Buffer Tubes 0.118" – 0.126" OD
800011382	Furcation Kit – Stainless Steel Buffer Tubes 0.102" – 0.110" OD
800011563	Furcation Kit – Stainless Steel Buffer Tubes 0.063" – 0.098" OD
80813862	Small Parts Bag for 9.5" COYOTE® Dome Closures with FIBERLIGN® CRB System
80808187	Heat Shrink Splice Protector Kit – Includes (12) 40 mm Single Fusion
8004095	Heat Shrink Splice Protector Kit – Includes (50) 40 mm Single Fusion
8003280	Transition Tube Kit – Includes (1) 0.135" x 24.5" ID (3.4 mm x 622 mm), (1) 0.170" x 24.5" ID (6 4 mm x 22 mm), (1) 0.25" x 24.5" ID (6 mm x 622 mm) Long Transition Tubes
80805293	Transport Tube Kit – Includes (6) 0.135" x 34" ID (3.4 mm x 863 mm) Long Transport Tubes

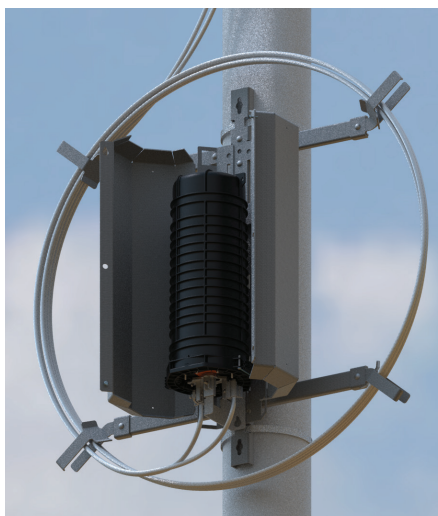
MOUNTING ACCESSORIES

- The Dome Halo Bracket is used to secure the top end of the dome closure when the closure is directly mounted to a pole/structure or when a COYOTE 9.5" x 28" Dome Closure is mounted directly to the SLACKLOOP® 60" Cable Storage.
- The Lattice Tower Clamp Kit is used for mounting the SLACKLOOP 60" Cable Storage or the Defender directly to lattice towers with tower members up to 1-1/8" thick. Two Lattice Tower Clamps are required for each installation.
- 5/8" through bolts, 5/8" double-arming bolts, and banding are not supplied with any of the kits listed below.

Catalog Number	Description
80813941	Dome Halo Bracket for 9.5" COYOTE Dome Closures with FIBERLIGN CRB System
80061195	SLACKLOOP 60" Cable Storage
8003512	COYOTE Defender for 9.5" COYOTE Dome Closures
LTC-1	Lattice Tower Clamp Kit with 6" Long Bolt



COYOTE 9.5"x19" Dome Closure with FIBERLIGN CRB System Mounted to Wood Pole with Dome Halo Bracket and Direct Mounting Clamp



COYOTE 9.5"x28" Dome Closure with FIBERLIGN CRB System Mounted to Steel Pole with COYOTE Defender and SLACKLOOP 60" Cable Storage

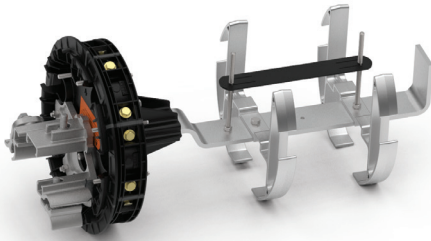


COYOTE 9.5"x28" Dome Closure with FIBERLIGN CRB System Mounted to Lattice Tower with SLACKLOOP 60" Cable Storage and Lattice Tower Clamps

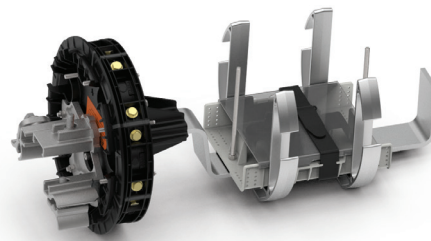
ORDERING INFORMATION

- Select the appropriate catalog number from the tables below based on the OPGW fiber count and buffer tube type.
- 9.5" COYOTE Dome Closure Kits with the FIBERLIGN CRB System can be customized to include the appropriate grommet kit(s) and splice tray(s) required for specific cable diameters and splice quantities. Contact PLP for details.

9.5" x 19" COYOTE Dome Closure Kits with the FIBERLIGN CRB System



Plastic Buffer Tube Organizer
(Catalog Number: COYW919P001)



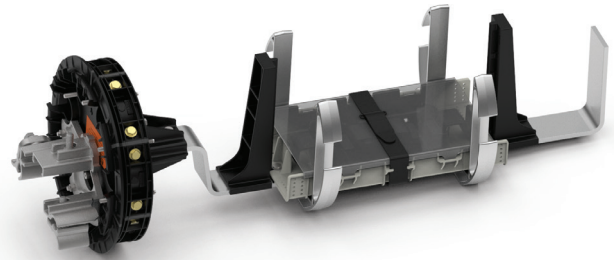
Stainless Steel Buffer Tube Organizer
(Catalog Number: COYW919S001)

Catalog Number	Description
COYW919P001	COYOTE 9.5" x 19" Dome Closure with FIBERLIGN CRB System for Plastic Buffer Tube Application
COYW919S001	COYOTE 9.5" x 19" Dome Closure with FIBERLIGN CRB System for Stainless Steel Buffer Tube Applications

9.5" x 28" COYOTE Dome Closure Kits with the FIBERLIGN CRB System



Plastic Buffer Tube Organizer
(Catalog Number: COYW928P001)



Stainless Steel Buffer Tube Organizer
(Catalog Number: COYW928S001)

Catalog Number	Description
COYW928P001	COYOTE 9.5" x 28" Dome Closure with FIBERLIGN CRB System for Plastic Buffer Tube Application
COYW928S001	COYOTE 9.5" x 28" Dome Closure with FIBERLIGN CRB System for Stainless Steel Buffer Tube Applications