



COYOTE® STP-L AND STP-XL MOUNTING BRACKET WITH INTEGRATED SLACK STORAGE

INSTALLATION INSTRUCTIONS

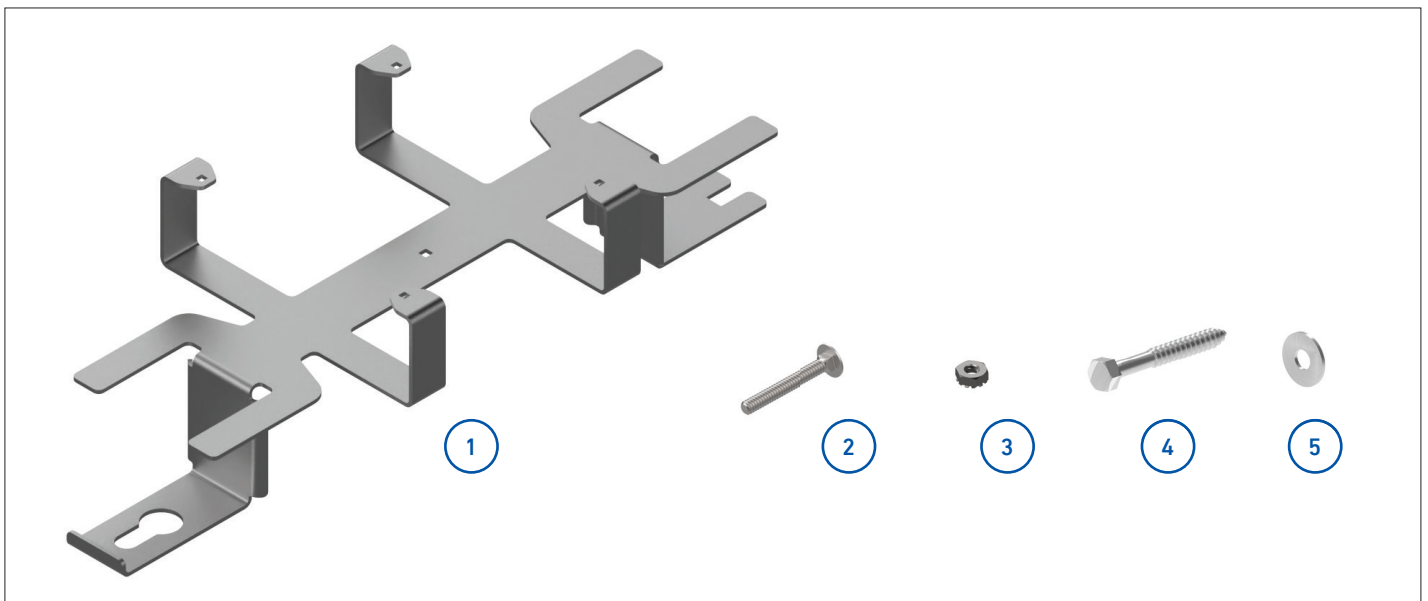
IMPORTANT SAFETY INFORMATION

READ AND COMPLETELY UNDERSTAND ALL INSTRUCTIONS BEFORE INSTALLING PRODUCT. FAILURE TO FOLLOW THESE INSTRUCTIONS MAY RESULT IN PERSONAL INJURY OR DEATH.

This product is intended for use by trained technicians only. This product should not be used by anyone who is not familiar with and not trained to use it. When working in the area of energized lines, extra care should be taken to prevent accidental electrical contact. Be sure to wear proper safety equipment per your company protocol. These instructions are not intended to supersede any company construction or safety standards. These instructions are offered only to illustrate safe installation for the individual. PLP products are intended for the specified application only. Do not modify this product under any circumstances. Do not reuse or reinstall any PLP product unless that capability is expressly indicated in the product's Installation Instructions. For proper performance and personal safety, be sure to select the proper PLP product before installation. PLP products are precision devices. To ensure proper performance, they should be stored in cartons under cover and handled carefully.

PACKAGE COMPONENTS

The bracket kit is designed to support the COYOTE STP PRO series of closures (STP-L and STP-XL). Assembly instructions are valid for all closures in the COYOTE STP PRO line of products.



Catalog Number: 8004214

1. Mounting Body (1)
2. Carriage Bolts (4)
3. Keps Nuts (4)
4. 1/2" x 4" Lag Bolts (2)
5. Washers (2)

Tools Required

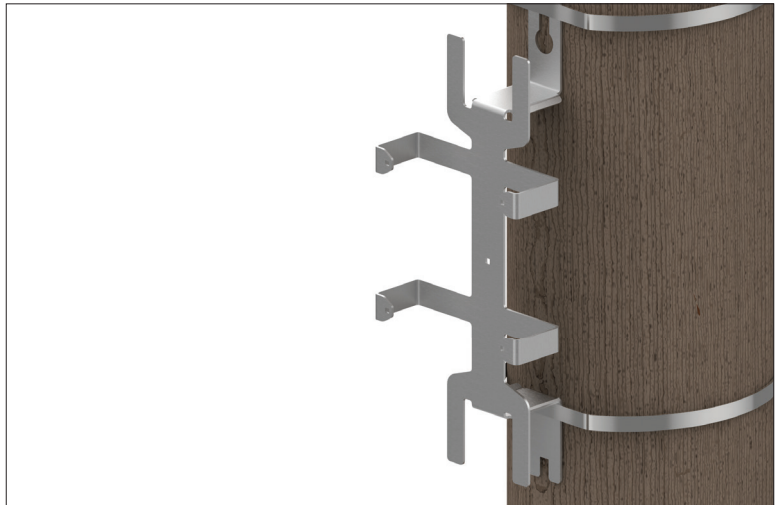
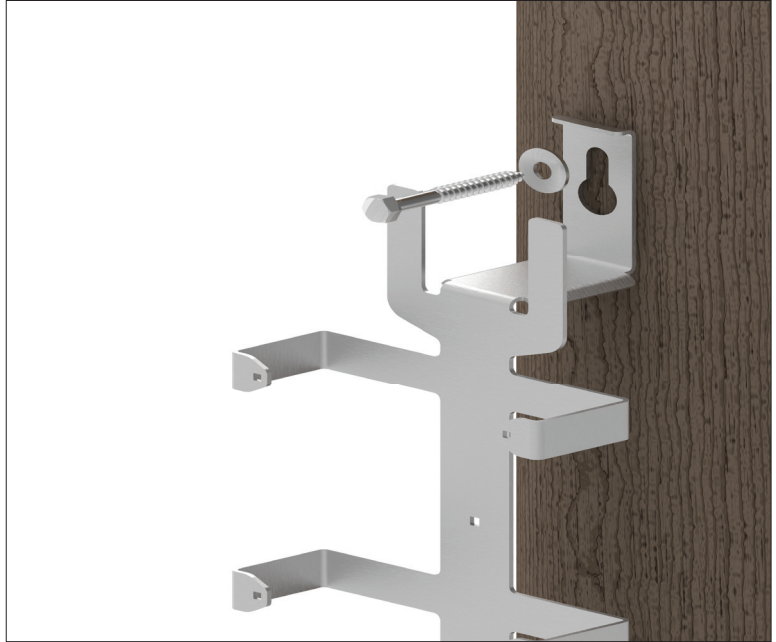
- 3/8" & 3/4" Can Wrench or Socket Wrench
- Crescent Wrench

MOUNTING THE BRACKET TO A POLE

- 1 Using one of the provided lag bolts and washers, attach the top of the bracket through the keyhole slot. Tighten until the bracket body is held firm to the mounting surface.

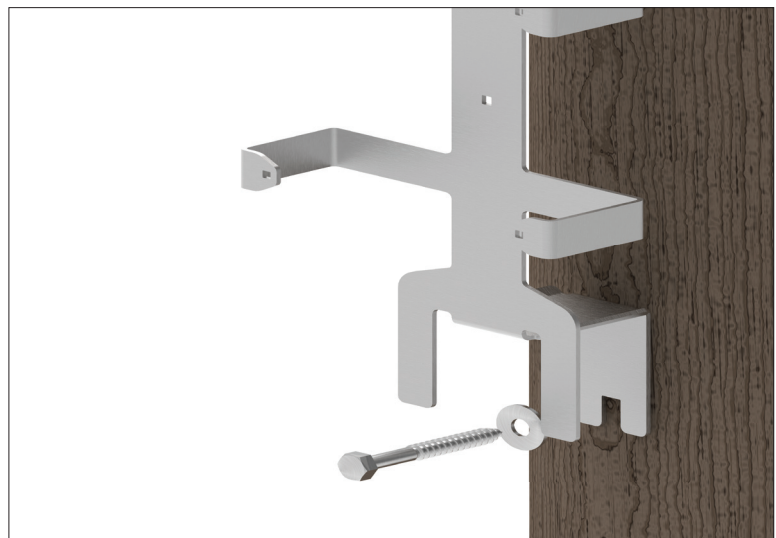
For banded applications, place banding at both the top and bottom bracket tabs. Banding to be installed per the manufacturer's instructions.

NOTE: PLP does not supply the banding material.



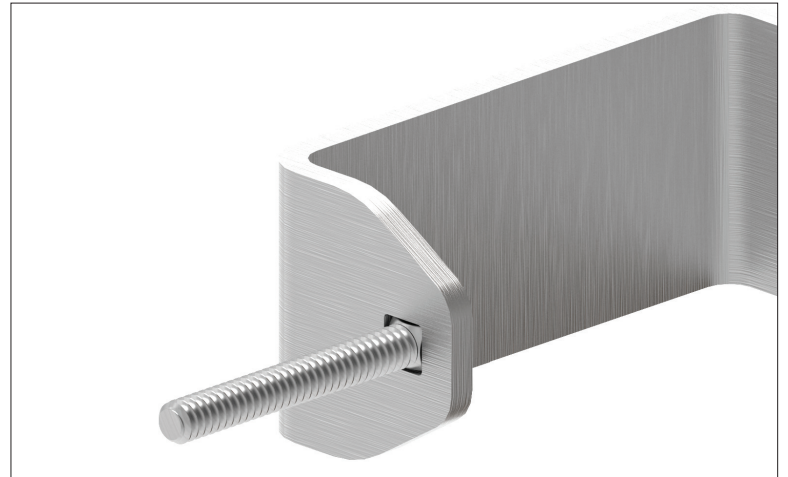
- 2 Using the second lag bolt and washer, attach the bracket through the lower cut-out slot. Tighten until the bracket body is held firmly to the mounting surface.

NOTE: Ensure the bolt is high enough in the square hole to prevent the bracket body from rotating.



INSTALLING THE STP PRO CLOSURE TO INTEGRATED STORAGE BRACKET

- 3 Install the four carriage bolts through the back of the bracket arms and into the square holes. Ensure the square shank of the shaft is fully seated in the square hole of the bracket arm.



- 4 Slide the four (4) mounting tabs on the closure over the bolts in the bracket arms until the mounting tabs sit on top of the bracket. Using four of the provided keps nuts, secure the closure to the bracket arms.



5 Finished, mounted closure.

