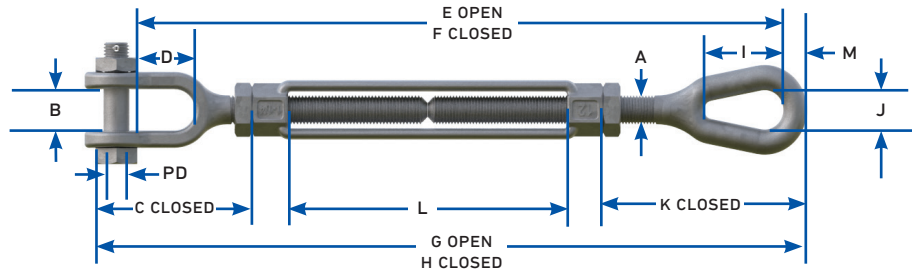
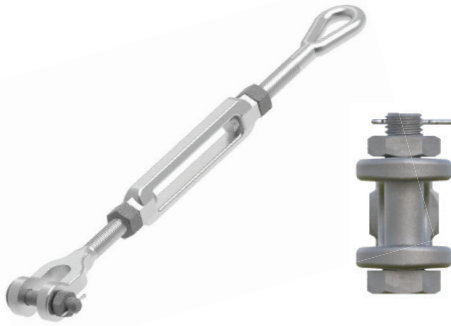
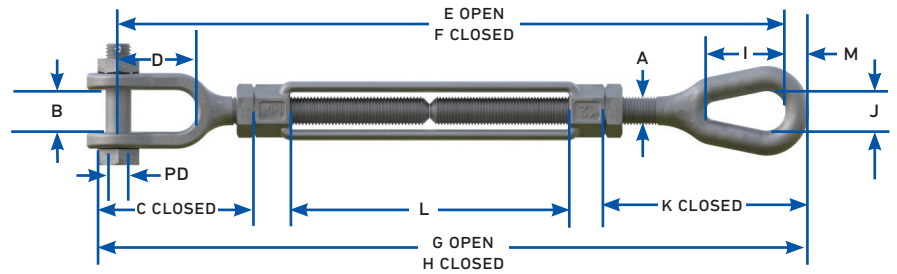


JAW EYE TURNBUCKLE



Catalog Number	Size	WLL	Rated Breaking Strength	Weight	Dimensions					
					in (mm)					
					A	B	C	D	PD	E
TB-JE-34-6	3/4 x 6 (19.1 x 152)	5,200 (23.1)	26,000 (116)	4.00 (1.81)	3/4 (19.1)	15/16 (23.9)	4-3/16 (106)	1-1/2 (38.1)	5/8 (15.9)	21-3/16 (538.2)
TB-JE-34-9	3/9 x 9 (19.1 x 229)	5,200 (23.1)	26,000 (116)	4.75 (2.15)	3/4 (19.1)	15/16 (23.9)	4-3/16 (106)	1-1/2 (38.1)	5/8 (15.9)	22-3/16 (563.6)
TB-JE-34-12	3/4 x 12 (19.1 x 305)	5,200 (23.1)	26,000 (116)	5.40 (2.45)	3/4 (19.1)	15/16 (23.9)	4-3/16 (106)	1-1/2 (38.1)	5/8 (15.9)	33-1/3 (846.7)
TB-JE-34-18	3/4 x 18 (19.1 x 457)	5,200 (23.1)	26,000 (116)	7.00 (3.17)	3/4 (19.1)	15/16 (23.9)	4-3/16 (106)	1-1/2 (38.1)	5/8 (15.9)	45-3/16 (1147.8)
TB-JE-78-12	7/8 x 12 (22.4 x 305)	7,200 (32)	36,000 (160)	8.00 (3.63)	7/8 (22.4)	1-1/8 (28.7)	4-7/8 (123)	1-3/4 (44.5)	3/4 (19.1)	34-1/3 (872.1)
TB-JE-78-18	7/8 x 18 (22.4 x 457)	7,200 (32)	36,000 (160)	9.75 (4.42)	7/8 (22.4)	1-1/8 (28.7)	4-7/8 (123)	1-3/4 (44.5)	3/4 (19.1)	46-1/3 (1176.9)
TB-JE-1-6	1 x 6 (25.4 x 152)	10,000 (44.5)	50,000 (222)	8.90 (4.04)	1 (25.4)	1-3/16 (30.2)	5-1/2 (140)	2-1/16 (52.3)	7/8 (22.4)	24-1/3 (618.1)
TB-JE-1-12	1 x 12 (25.4 x 229)	10,000 (44.5)	50,000 (222)	11.20 (5.08)	1 (25.4)	1-3/16 (30.2)	5-1/2 (140)	2-1/16 (52.3)	7/8 (22.4)	36-1/3 (922.9)
TB-JE-1-18	1 x 18 (25.4 x 305)	10,000 (44.5)	50,000 (222)	13.30 (6.03)	1 (25.4)	1-3/16 (30.2)	5-1/2 (140)	2-1/16 (52.3)	7/8 (22.4)	48-1/3 (1227.7)
TB-JE-1-24	1 x 24 (25.4 x 610)	10,000 (44.5)	50,000 (222)	17.00 (7.71)	1 (25.4)	1-3/16 (30.2)	5-1/2 (140)	2-1/16 (52.3)	7/8 (22.4)	60-1/3 (1532.5)

JAW EYE TURNBUCKLE CONTINUED



Catalog Number	Dimensions							
	in (mm)							
	F	G	H	I	J	K	L	M
TB-JE-34-6	15-3/16 (385.8)	23-1/8 (587.4)	17-1/8 (435)	2-1/16 (53.1)	1 (25.4)	4-11/16 (119)	6 (152)	9/16 (15.5)
TB-JE-34-9	16-3/16 (411.2)	23-1/8 (587.4)	17-1/8 (435)	2-1/16 (53.1)	1 (25.4)	4-11/16 (119)	9 (229)	9/16 (15.5)
TB-JE-34-12	21-3/16 (538.2)	35-1/8 (892.2)	23-1/8 (587.4)	2-1/16 (53.1)	1 (25.4)	4-11/16 (119)	12 (305)	9/16 (15.5)
TB-JE-34-18	27-3/16 (690.6)	47-1/8 (1197)	29-1/8 (739.8)	2-1/16 (53.1)	1 (25.4)	4-11/16 (119)	18 (457)	9/16 (15.5)
TB-JE-78-12	24-1/3 (618.1)	36-9/16 (928.7)	24-9/16 (623.9)	2-3/8 (60.5)	1-1/4 (31.8)	5-1/8 (130)	12 (305)	3/4 (19.8)
TB-JE-78-18	28-1/3 (719.7)	48-9/16 (1233.5)	30-9/16 (776.3)	2-3/8 (60.5)	1-1/4 (31.8)	5-1/8 (130)	18 (457)	3/4 (19.8)
TB-JE-1-6	18-1/3 (465.7)	26-7/8 (682.6)	20-7/8 (530.2)	3 (76.2)	1-7/16 (36.6)	6-3/8 (162)	6 (152)	7/8 (22.4)
TB-JE-1-12	24-1/3 (618.1)	38-7/8 (987.4)	26-7/8 (682.6)	3 (76.2)	1-7/16 (36.6)	6-3/8 (162)	12 (305)	7/8 (22.4)
TB-JE-1-18	30-1/3 (770.5)	50-7/8 (1292.2)	32-7/8 (835)	3 (76.2)	1-7/16 (36.6)	6-3/8 (162)	18 (457)	7/8 (22.4)
TB-JE-1-24	36-1/3 (922.9)	62-7/8 (1597)	38-7/8 (987.4)	3 (76.2)	1-7/16 (36.6)	6-3/8 (162)	24 (610)	7/8 (22.4)