

SLACKLOOP® 33" CABLE STORAGE

The **SLACKLOOP 33" Cable Storage** neatly stores slack ADSS cables on wood poles, concrete poles, and lattice towers. The storage system is available in a 33" size and consists of crossarms that are attached to a central vertical bracket that can be bolted or banded to a structure. The crossarm's metal keepers maintain the proper bend radius for the slack cable. Cable straps (not provided) can be used to neatly group cable loops and secure them to keepers, if desired.

FEATURES AND BENEFITS

- Metal channel structural frames provide a durable lightweight design with rigid strength
- Frames are made from corrosion-resistant aluminum materials
- Keyholes along the central vertical bracket allow various splice closures to be mounted using specialized mounting bracket kits
- Wide cable keepers with smooth tapered ends for better cable support
- Factory-installed keepers minimize field assembly, and the product comes in a compact container for easy, efficient storage.

SPECIFICATIONS

SLACKLOOP 33" Cable Storage

Characteristic	Specification
Storage Bracket Size	33" (838 mm)
Maximum Cable Diameter ¹	1.00" (25.4 mm)
Maximum Cable Storage Length ²	300 ft (91.4 m) for 0.83" OD Round Cables 210 ft (64.0 m) for 1.00" OD Round Cables

¹The maximum cable diameter is based on buffer-tube-style cables. For more information regarding other cable types, contact PLP.

²To determine the maximum cable storage for multiple cables, divide the number of cables being stored in the bracket by the the maximum cable storage amount.

ORDERING INFORMATION



Catalog Number: 8004072E

SLACKLOOP 33" Cable Storage

Catalog Number	Description
8004072E	Includes (2) Crossarms with Keepers, (6) 1/2"-13 x 1-1/2" Carriage Bolts, (6) 1/2"-13 Nuts, (6) 1/2" Lock Washers, & (6) 1/2" Washers

NOTE: 5/8" through bolts, 5/8" double-arming bolts, and banding not supplied. 5/8" through bolts and double-arming bolts are typically used to mount crossarms to wood poles. Two extra carriage bolts are included to mount a splice closure.



ORDERING INFORMATION



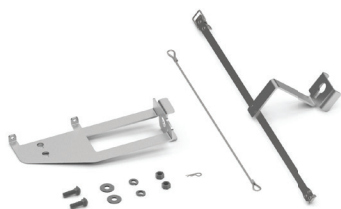
Catalog Number: 8004172



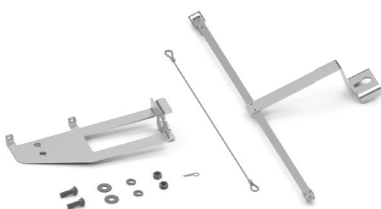
Catalog Number: 8004116



Catalog Number: 8004117



Catalog Number: 80812746



Catalog Number: 80812938



Catalog Number: 8004173

Splice Closure Mounting Bracket Kits for SLACKLOOP 33" Cable Storage

Catalog Number	Description
8004172	COYOTE® DTC4/6/8 Mounting Kit
8004116	COYOTE® ONE Mounting Kit
8004117	COYOTE® 6.5" Dome Closure Mounting Kit
80812746	COYOTE® 9.5" x 19" Dome Closure Mounting Kit
80812938	COYOTE® 9.5" x 28" Dome Closure Mounting Kit
8004173 ¹	COYOTE® 9.5" x 19" and 9.5" x 28" Terminal Dome Closure Mounting Kit

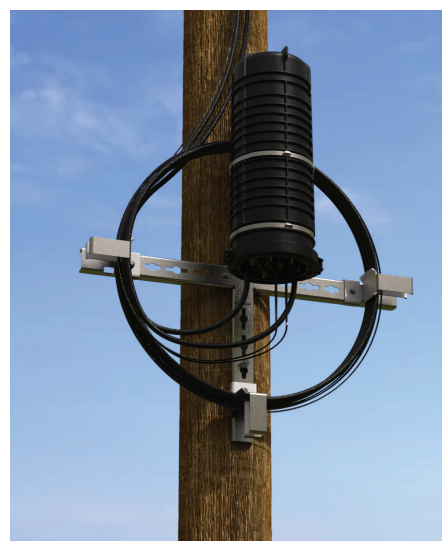
¹This kit can be used with other dome-style splice closures like the FOSC™ 450-D6 Closure from CommScope. Contact PLP for more information.



COYOTE® DTC8 Mounted on
SLACKLOOP 33" Cable Storage



COYOTE® ONE Mounted on
SLACKLOOP 33" Cable Storage

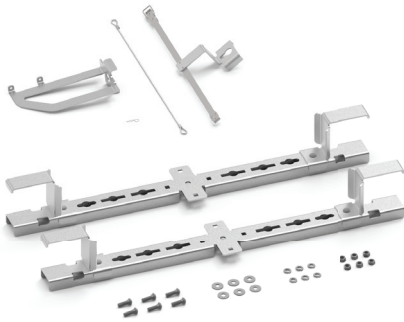


COYOTE® 9.5" x 28" Terminal Dome Mounted
on SLACKLOOP 33" Cable Storage

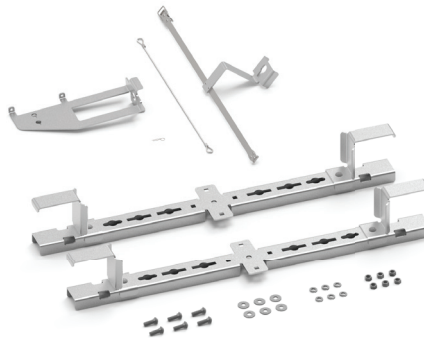
ORDERING INFORMATION

4

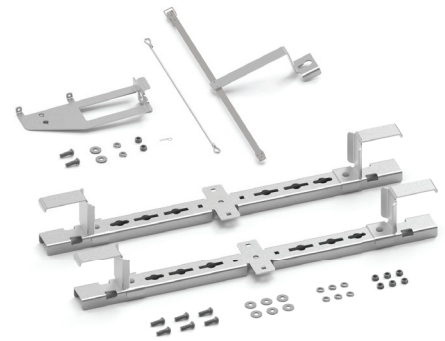
CABLE STORAGE



Catalog Number: 8004066



Catalog Number: 800015342LW



Catalog Number: 800015452

SLACKLOOP 33" Cable Storage with Splice Closure Mounting Bracket Kits

Catalog Number	Description
8004066	33" SLACKLOOP Cable Storage with COYOTE® 6.5" Dome Closure Mounting Kit
800015342LW	33" SLACKLOOP Cable Storage with COYOTE® 9.5" x 19" Dome Closure Mounting Kit
800015452	33" SLACKLOOP Cable Storage with COYOTE® 9.5" x 28" Dome Closure Mounting Kit

NOTE: 5/8" through bolts, 5/8" double-arming bolts, banding, and splice closures are not supplied with the kits. 5/8" through bolts and double-arming bolts are typically used to mount crossarms to wood poles.