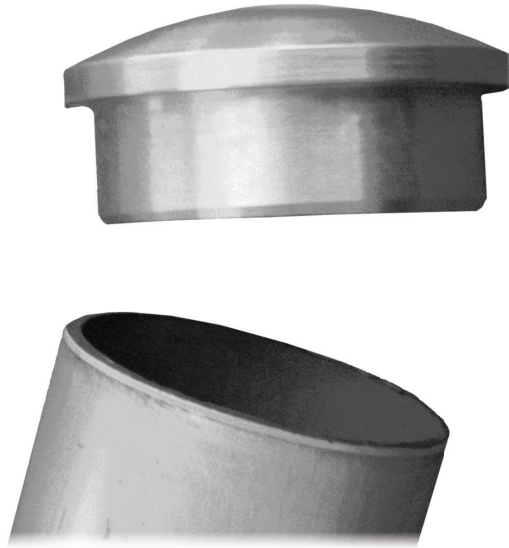




SECTION 9

CAPS

SUBSTATION CONNECTORS - 230KV AND BELOW



CAPS

PLP **Substation Connectors Caps** for 230kV and below are designed to fit to the end of the bus tube to prevent the entry of moisture, dust, contaminants, and wildlife. Bus tube end caps can be bolted or welded to the busbar from outside or inside. Corona bell end caps also reduce electrostatic losses and radio interference.

FEATURES AND BENEFITS

- Complete range of sizes for standard bus tube
- Available in aluminum and bronze, with tin plating capabilities for both materials
- Custom design solutions available to secure your most challenging connections

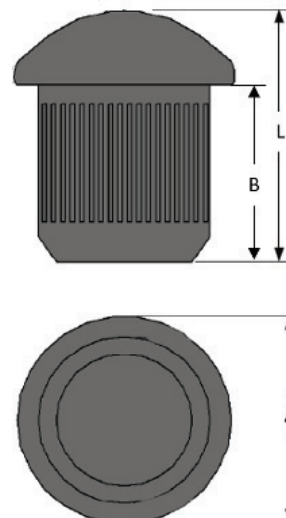
TA-A

Aluminum Corona Bell End Cap Internal Press Fit 230kV and Below

Aluminum alloy corona bell end cap for sealing NPS aluminum tube from rain and excessive humidity. The corona bell reduces electrostatic losses and radio interference.

CASTINGS: Aluminum Alloy

See page 136 for special order options such as tin plating, hardware materials and specific angles. Contact PLP for further details, unlisted option and/or special applications.



Part Number SCH 40	Part Number SCH 80	NPS Tube Diameter	Dimensions		
			in (mm)		
		in (mm)	A	B	L
TA37A	TA37AH	3/4 (19)	1.06 (27)	1.00 (25)	1.30 (33)
TA38A	TA38AH	1 (25)	1.30 (33)	1.00 (25)	1.50 (38)
TA39A	TA39AH	1-1/4 (32)	1.65 (42)	1.46 (37)	1.77 (45)
TA40A	TA40AH	1-1/2 (38)	1.89 (48)	1.46 (37)	1.93 (49)
TA41A	TA41AH	2 (51)	2.36 (60)	1.69 (43)	2.20 (56)
TA42A	TA42AH	2-1/2 (64)	2.87 (73)	1.69 (43)	2.36 (60)
TA43A	TA43AH	3 (76)	3.50 (59)	1.69 (43)	2.36 (60)
TA44A	TA44AH	3-1/2 (89)	4.00 (102)	2.20 (56)	3.27 (83)
TA45A	TA45AH	4 (102)	4.49 (114)	2.28 (58)	3.27 (83)
TA46A	TA46AH	4-1/2 (114)	5.00 (127)	2.64 (67)	3.50 (89)
TA47A	TA47AH	5 (127)	5.55 (141)	2.68 (68)	3.90 (99)
TA49A	TA49AH	6 (152)	6.61 (168)	3.00 (76)	3.90 (99)

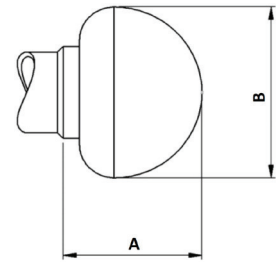
MYSTS

Aluminum Corona Bell End Cap External, Weld 230kV and Below

Aluminum alloy corona bell end cap for sealing NPS aluminum tube from rain and excessive humidity. The corona bell reduces electrostatic losses and radio interference.

CASTINGS: Aluminum Alloy

See page 136 for special order options such as tin plating, hardware materials and specific angles. Contact PLP for further details, unlisted option and/or special applications.



Part Number	NPS Tube Diameter	Dimensions	
		in (mm)	
	in (mm)	A	B
MYSTS-18A	2 (51)	6.42 (163)	8.66 (220)
MYSTS-19A	2-1/2 (64)	6.42 (163)	8.66 (220)
MYSTS-20A	3 (76)	7.48 (190)	10.63 (270)
MYSTS-22A	4 (102)	9.49 (241)	11.81 (300)
MYSTS-24A	5 (127)	8.98 (228)	12.01 (305)
MYSTS-86A	6 (152)	9.72 (247)	12.01 (305)

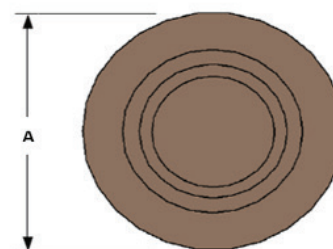
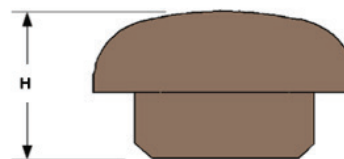
TA

Bronze Corona Bell End Cap Internal Press Fit 230kV and Below

Copper alloy corona bell end cap for sealing NPS copper tube from rain and excessive humidity. The corona bell reduces electrostatic losses and radio interference.

CASTINGS: Copper Alloy

See page 136 for special order options such as tin plating, hardware materials and specific angles. Contact PLP for further details, unlisted option and/or special applications.



Part Number SCH 40	Part Number SCH 80	NPS Tube Diameter	Dimensions	
			in (mm)	
		in (mm)	A	H
TA36	TA36H	1/2 (13)	.83 (21)	.63 (16)
TA37	TA37H	3/4 (19)	1.06 (27)	.67 (17)
TA38	TA38H	1 (25)	1.30 (33)	.75 (19)
TA39	TA39H	1-1/4 (32)	1.65 (42)	.75 (19)
TA40	TA40H	1-1/2 (38)	1.89 (48)	1.06 (27)
TA41	TA41H	2 (51)	2.36 (60)	1.06 (27)
TA42	TA42H	2-1/2 (64)	2.87 (73)	1.38 (35)
TA43	TA43H	3 (76)	3.50 (89)	1.77 (45)
TA44	TA44H	3-1/2 (89)	4.00 (102)	2.05 (52)
TA45	TA45H	4 (102)	4.49 (114)	2.24 (57)
TA46	TA46H	4-1/2 (114)	5.00 (127)	2.64 (67)
TA47	TA47H	5 (127)	5.55 (141)	2.87 (73)

