

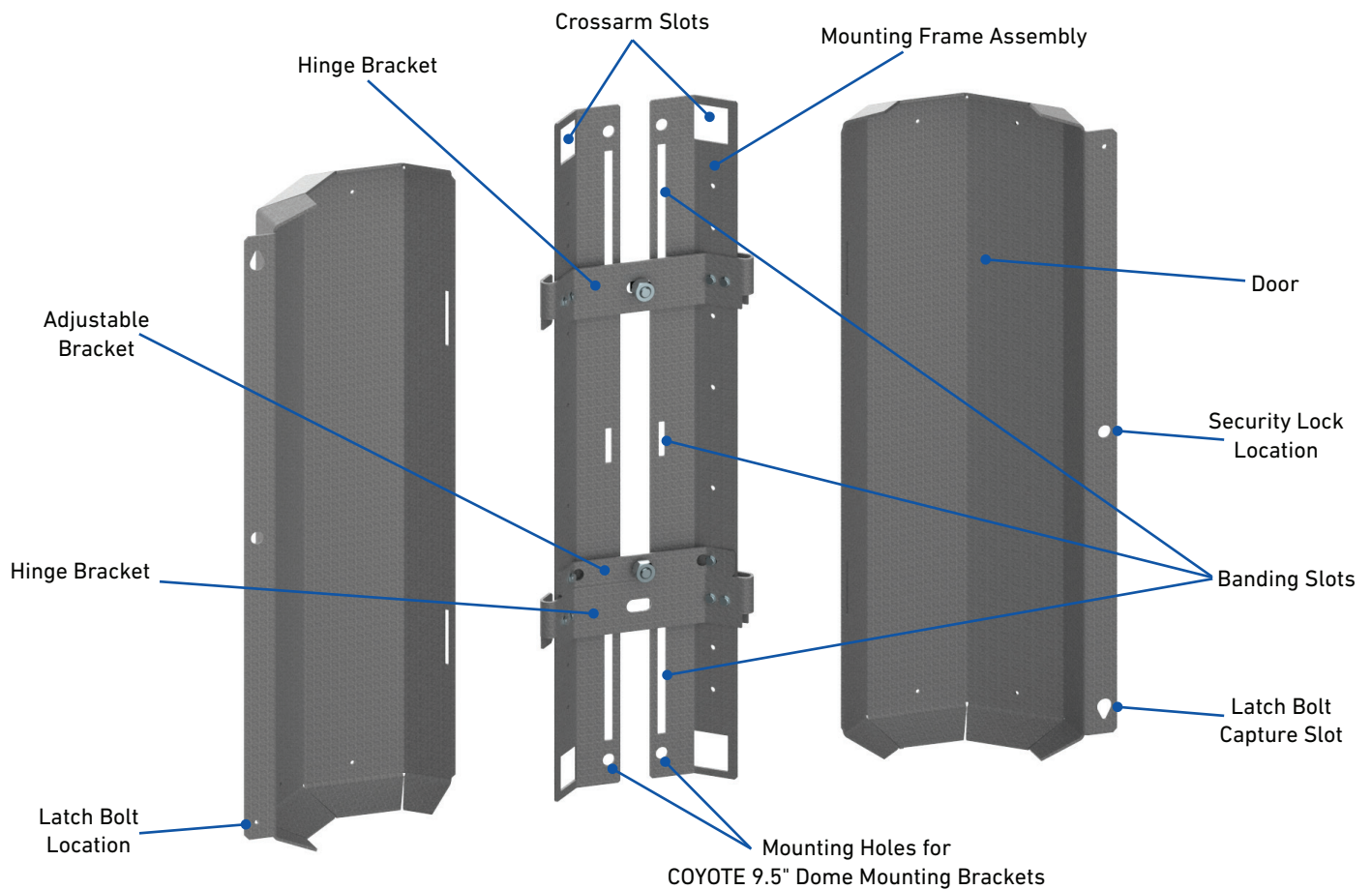
COYOTE® DEFENDER

The **COYOTE Defender** provides added protection for PLP splice enclosures that are mounted vertically on a structure. It consists of a mounting frame and two large doors that surround the splice enclosure. The factory-assembled mounting frame has two vertical brackets, two hinge brackets, and an adjustable bracket for mounting splice enclosures within the Defender.

FEATURES AND BENEFITS

- Provides ballistic protection for various PLP splice enclosures, including COYOTE Dome Closures (6.5" x 17", 6.5" x 22", 9.5" x 19", & 9.5" x 28"), and COYOTE Stainless Steel Splice Cases (6.5" x 22", 6.5" x 28", 8" x 28", & 9.5" x 28")
- Adjustable horizontal bracket accommodates splice enclosures that do not align with the default position
- Two large removable doors allow easy access for future maintenance or expansion
- Steel components are galvanized or zinc plated to prevent corrosion
- Can be bolted or banded to a pole/structure with 5/8" through bolts, 5/8" double-arming bolts, or 1-1/2" steel banding
- Slots in the top and the bottom of the frame allow crossarms of the Adjustable Spool Vertical SLACKLOOP System to be installed to provide slack cable storage

COMPONENTS

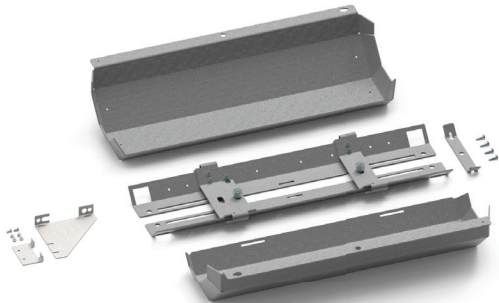


Component	Description
Mounting Frame Assembly	Two vertical brackets attached together with two hinge brackets (spaced 19" apart) to mount 28" COYOTE splice cases.
Doors	Installed onto the hinge brackets of the mounting frame and secured together with two latch bolts. A hole in the center of each door flange accommodates a lock for added security.
Banding Slots	Slots along the vertical brackets allow for 1-1/2" wide steel banding
Crossarm Slots	Slots located at the top and bottom of the vertical brackets allow Adjustable Spool Vertical SLACKLOOP System crossarms to be installed to provide slack cable storage.

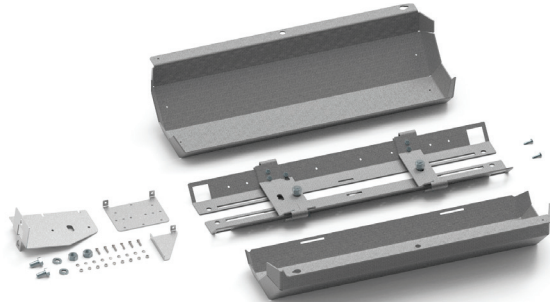
NOTE: An adjustable horizontal bracket is necessary to accommodate various size splice enclosures that do not align with the default position.



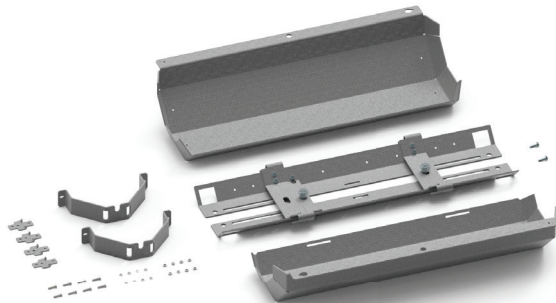
ORDERING INFORMATION



COYOTE Defender with
COYOTE 6.5" Dome Closure Mounting Bracket Kit
Catalog Number: 800012162



COYOTE Defender with
COYOTE 9.5" Dome Closure Mounting Bracket Kit
Catalog Number: 800014420



COYOTE Defender with Mounting Bracket Kit for the
COYOTE 6.5" x 22", 6.5" x 28", 8" x 28", and 9.5" x 28" Splice Cases
Catalog Number: 8003491

COYOTE Defender with Splice Enclosure Mounting Bracket Kits

Catalog Number	Description
800012162	COYOTE® Defender with COYOTE® 6.5" Dome Closure Mounting Bracket Kit
800014420	COYOTE® Defender with COYOTE® 9.5" Dome Closure Mounting Bracket Kit
8003491	COYOTE® Defender with Mounting Bracket Kit for the COYOTE® 6.5" x 22", 6.5" x 28", 8" x 28", and 9.5" x 28" Splice Cases

NOTE: 5/8" through bolts, 5/8" double-arming bolts, and banding are not supplied with the kits. 5/8" through bolts or double-arming bolts are typically used to mount the COYOTE Defender to wood poles.

ORDERING INFORMATION

COYOTE Defender Cable Storage Accessories

Catalog Number	Description
8003569	SLACKLOOP® Adjustable Cable Storage

NOTE: For COYOTE 9.5" Dome applications, the bottom crossarm cannot be inserted through the bottom slots of the Defender and will need to be mounted directly to the structure/pole underneath the Defender.



COYOTE 6.5" x 17" Dome Closure
with COYOTE Defender and
SLACKLOOP Adjustable Cable Storage



COYOTE 9.5" x 28" Dome Closure with
COYOTE Defender and
SLACKLOOP Adjustable Cable Storage