

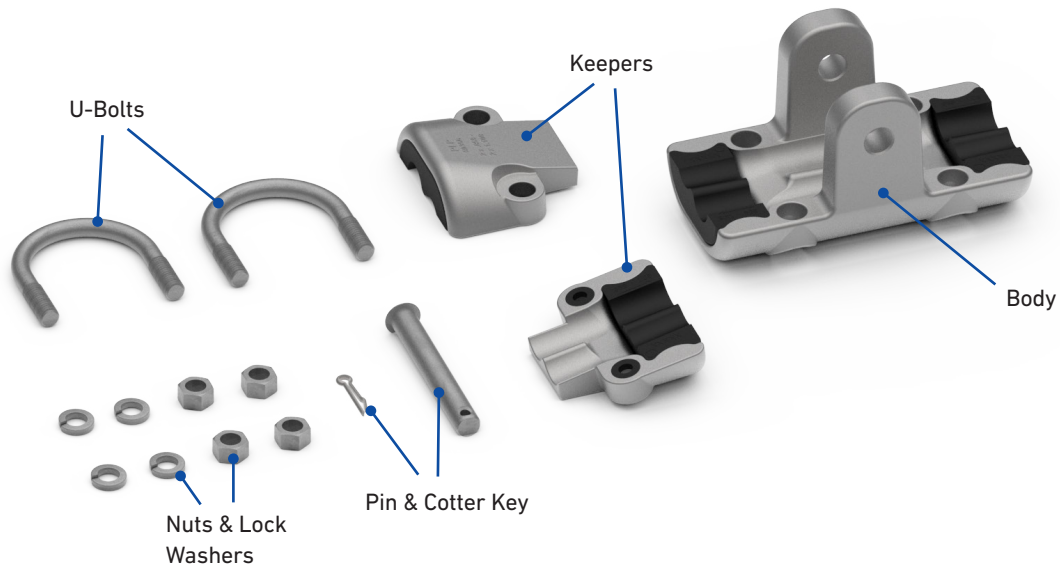
## CUSHION-GRIP® TWISTED PAIR SUSPENSION

The **CUSHION-GRIP Twisted Pair Suspension** is intended for use on aluminum-based Twisted Pair conductors. It utilizes elastomer cushion inserts that significantly reduce static and dynamic bending stresses on the conductor at the support point.

### FEATURES AND BENEFITS

- Field-proven elastomer cushions protect the conductor against abrasion, wear, and fatigue caused by aeolian vibration, galloping, and autorotation
- Elastomer cushions have been found to reduce static bending strain at the clamp by as much as 50% compared with metal-to-metal suspension clamps
- Features parallel grooves in both the keeper and base to protect the conductor from deformation and abrasion
- Base and keepers made of high-strength aluminum alloy
- Rated for 125°C continuous operating temperatures (150°C two-hour emergency)
- High-Temperature version available for 210°C continuous operation
- Compatible with standard attachment hardware

## COMPONENTS



### CUSHION-GRIP® Twisted Pair Suspension

Characteristic	Specification
Unbalanced/Slip Load	10% - 15% of conductor rated breaking strength
Maximum Vertical Load	Varies per assembly (consult dimensional chart for specific ratings)
Maximum Line Angle	30° for single support, 60° for double support



## ORDERING INFORMATION

- Select the appropriate catalog number for the CUSHION-GRIP® T2 Suspension from the table below based on the diameter of the conductor

### CUSHION-GRIP T2 Suspension Catalog Number

**CCT2-**   X     X     X     X    
(Section 1) (Section 2) (Section 3) (Section 4)

**Catalog Number Example: CCT2-0005HT**

Includes (1) CUSHION-GRIP Twisted Pair Suspension with a range of 2 x 0.648 - 2 x 0.858 and high-temperature cushions.

#### Section 1

Range Number	Conductor Range	Ultimate Vertical Load
		lb (kN)
0003	2 x 0.250 - 2 x 0.447	10,000 (44)
0004	2 x 0.448 - 2 x 0.642	15,000 (67)
0005	2 x 0.648 - 2 x 0.858	20,000 (89)
0006	2 x 0.859 - 2 x 1.108	25,000 (111)
0007	2 x 1.109 - 2 x 1.259	30,000 (133)

#### Section 2

Suffix Code	Type
Leave Blank	Standard
HT	High-Temperature

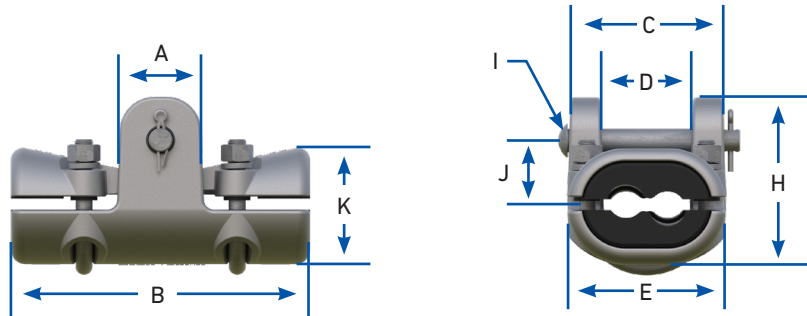
#### Section 3

Suffix Code	Type
Leave Blank	No attachment fittings
YC	Includes Y-Clevis Eye
CE	Includes Clevis Eye
SE	Includes Socket Eye

#### Section 4

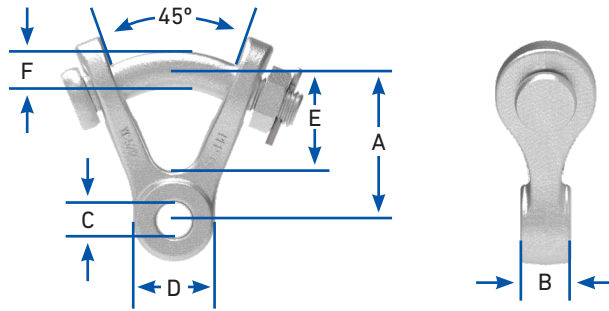
Suffix Code	Type
Leave Blank	Standard Clevis Pin and Cotter Pin
BNK	Bolt, Nut, and Cotter Pin

## DIMENSIONS



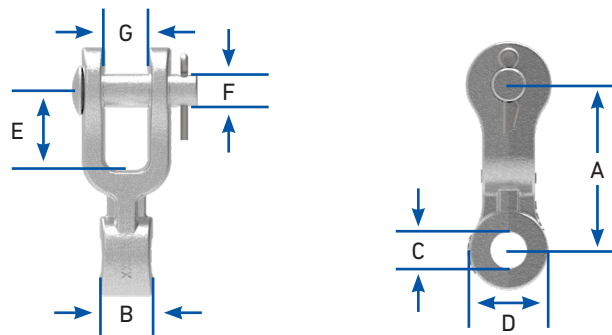
Catalog Number	Dimensions									Weight	Ultimate Vertical Load
	in (mm)										
	A	B	C	D	E	H	I	J	K	lb (kg)	lb (kN)
CCT2-0003	1.60 (40.6)	6.00 (152)	2.50 (63.5)	1.40 (35.6)	2.50 (63.5)	3.00 (76.2)	5/8 (15.9)	1.45 (36.8)	2.10 (53.3)	2.2 (1)	10,000 (44)
CCT2-0004	1.75 (44.5)	7.00 (177.8)	3.50 (88.9)	1.40 (35.6)	3.50 (88.9)	3.75 (95.3)	5/8 (15.9)	1.60 (40.6)	2.80 (71.1)	5.1 (2.31)	15,000 (67)
CCT2-0005	1.85 (47.0)	7.75 (196.9)	3.65 (92.7)	1.80 (45.7)	4.25 (107.9)	4.25 (107.9)	5/8 (15.9)	1.65 (41.9)	3.30 (83.8)	6.5 (2.95)	20,000 (89)
CCT2-0006	2.25 (57.2)	8.00 (203)	4.25 (107.9)	2.25 (57.2)	4.25 (107.9)	4.50 (114.3)	5/8 (15.9)	1.70 (43.2)	3.25 (82.6)	6.7 (3.04)	25,000 (111)
CCT2-0007	2.50 (63.5)	9.04 (229.2)	4.35 (110.5)	2.65 (67.3)	5.26 (133.6)	5.48 (139.7)	3/4 (19.1)	2.25 (57.2)	4.23 (107.4)	10.5 (4.76)	30,000 (133)

## HARDWARE FITTINGS



### Y-Clevis Eye

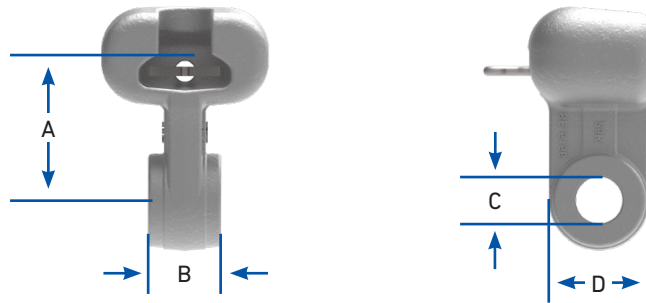
Catalog Number	Compatible CCT2 Suspension	Dimensions						Maximum Vertical Load
		in (mm)						
		A	B	C	D	E	F	lb (kN)
YC-5206	CCT2-0003	2-31/32 (75.4)	5/8 (15.9)	11/16 (17.5)	1-5/8 (41.3)	2-1/8 (54.0)	3/4 (19.0)	15,000 (67)
YC-5207	CCT2-0004	2-13/16 (71.4)	3/4 (19.1)	11/16 (17.5)	1-5/8 (41.3)	2-1/8 (54.0)	3/4 (19.0)	20,000 (89)
YC-5209	CCT2-0005	2-7/8 (73.0)	1-1/16 (26.9)	13/16 (20.6)	1-5/8 (41.3)	1-7/8 (47.6)	3/4 (19.0)	25,000 (111)
YC-5211	CCT2-0006	2-7/8 (73.0)	1 (25.4)	11/16 (17.5)	1-5/8 (41.3)	1-7/8 (47.6)	3/4 (19.1)	25,000 (111)
	CCT2-0007							



### Clevis Eye

Catalog Number	Compatible CCT2 Suspension	Dimensions							Maximum Vertical Load
		in (mm)							
		A	B	C	D	E	F	G	lb (kN)
CE-5261	CCT2-0003	3-1/8	3/4	11/16	1-1/2	1-1/2	5/8	13/16	20,000
	CCT2-0004	(79.4)	(19.1)	(17.5)	(38.1)	(38.1)	(15.9)	(20.6)	(89)
CE-5105	CCT2-0005	3-1/8 (79.4)	1-1/16 (26.9)	13/16 (20.6)	1-1/2 (38.1)	1-1/2 (38.1)	5/8 (15.9)	13/16 (20.6)	25,000 (111)
CE-5106	CCT2-0006	3-1/8	2-1/8	13/16	1-1/2	1-1/2	5/8	13/16	25,000
	CCT2-0007	(79.4)	(54.0)	(20.6)	(38.1)	(38.1)	(15.9)	(20.6)	(111)

## HARDWARE FITTINGS



### Socket Eye

Catalog Number	Compatible CCT2 Suspension	Dimensions				Maximum Vertical Load	For Use with Insulators ANSI Class Spec C-29.2-71
		in (mm)					
		A	B	C	D	lb (kN)	
SE-5152	CCT2-0003	2-21/32 (67.2)	3/4 (19.1)	11/16 (17.5)	1-1/2 (38.1)	25,000 (111)	52-3 & 52-5
	CCT2-0004						
SE-5154	CCT2-0005	2-21/32 (67.2)	1-1/16 (26.9)	13/16 (20.6)	1-1/2 (38.1)	25,000 (111)	
SE-5155	CCT2-0006	2-21/32 (67.2)	2-1/8 (54.0)	13/16 (20.6)	1-1/2 (38.1)	30,000 (133)	
	CCT2-0007						