



# CUSHION-GRIP® SUSPENSION FOR OVERHEAD SHIELD WIRE (OHSW) INSTALLATION INSTRUCTIONS

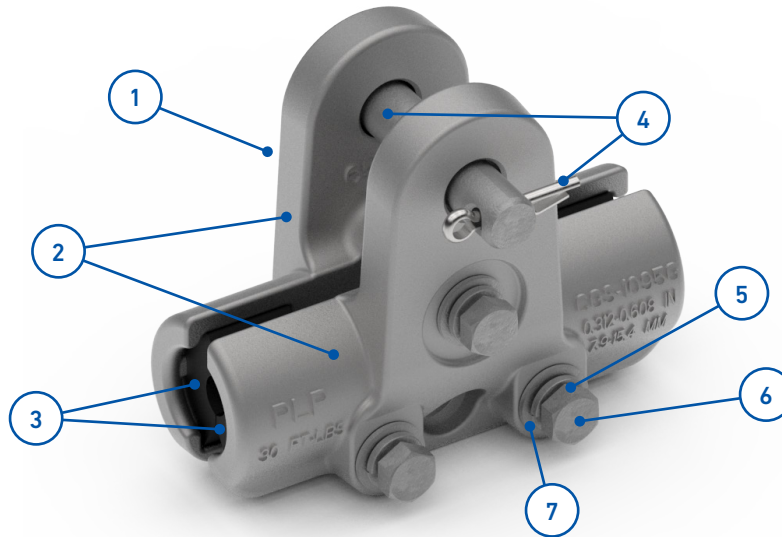


## IMPORTANT SAFETY INFORMATION

**READ AND COMPLETELY UNDERSTAND ALL INSTRUCTIONS BEFORE INSTALLING PRODUCT. FAILURE TO FOLLOW THESE INSTRUCTIONS MAY RESULT IN PERSONAL INJURY OR DEATH.**

This product is intended for use by trained technicians only. This product should not be used by anyone who is not familiar with and not trained to use it. When working in the area of energized lines, extra care should be taken to prevent accidental electrical contact. Be sure to wear proper safety equipment per your company protocol. These instructions are not intended to supersede any company construction or safety standards. These instructions are offered only to illustrate safe installation for the individual. PLP products are intended for the specified application only. Do not modify this product under any circumstances. Do not reuse or reinstall any PLP product unless that capability is expressly indicated in the product's Installation Instructions. For proper performance and personal safety, be sure to select the proper PLP product before installation. PLP products are precision devices. To ensure proper performance, they should be stored in cartons under cover and handled carefully.

## PACKAGE COMPONENTS



**PATENTED**

1. Nuts (Captive in Housing Half)
2. Housing Half (2 each)
3. Elastomer Inserts (2 per housing half)
4. Pin and Cotter Key
5. Split Lock Washers (3)
6. Bolts (3)
7. Flat Washers (3)

**SP3752**

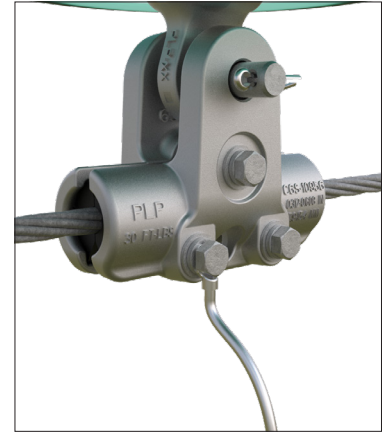
## HAND INSTALLATION

**1** Plumb suspension and mark the cable where the center of the clamp will fall using a felt pen or lumber crayon. Do not notch cable strands. **Ensure that the cable surface that will be within the CUSHION-GRIP® Suspension (CGS) is free from dirt or oxidation. Wire brush clean, if required. This is especially important if the CGS is installed on an existing cable.** Remove the pin and cotter key, or bolt, nut, and cotter key.

**2** Completely disengage the top bolt of the clamp assembly from its nut. Note that this bolt is held captive using a small rubber o-ring.

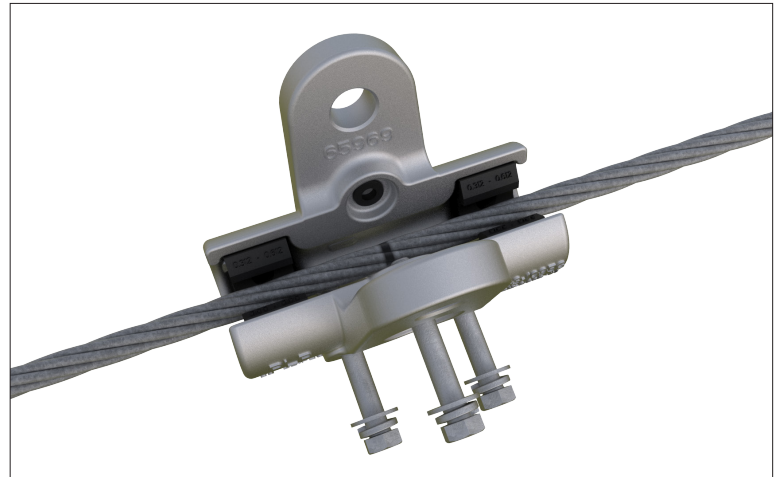
**3** Loosen the bottom two bolts making sure not to back them completely out of their respective nut. This will permit the clamp to pivot open on these bottom two bolts. If the bolts are not completely loosened, installation of the clamp on the largest cable in the clamp range may be difficult.

**NOTE:** If using a ground strap, remove one of the bottom bolts and attach it there before reinserting into the clamp.



**4** Place the clamp on the cable, lining up the suspension pinholes with the mark made up on the cable and the structure connection point. Push in the top bolt to engage it in the captured nut in the opposite housing half. Tighten by hand until snug.

**NOTE:** For extremely corrosive coastal environments, applying a liberal amount of conductive oxide inhibitor on the cable within the CGS will minimize the possibility of build-up of corrosive contaminants.

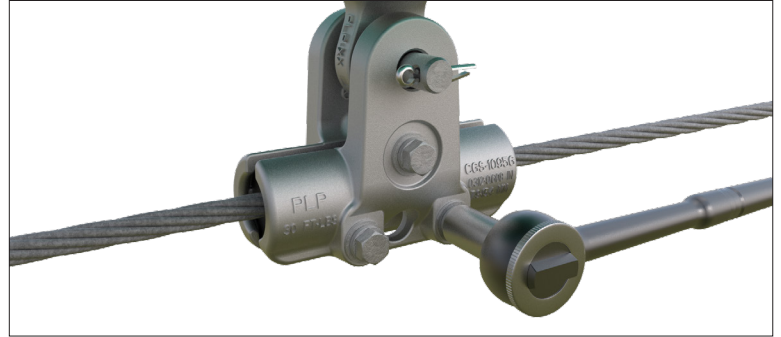


Install the clamp on the cable

- 5 Tighten all three bolts with a ratchet wrench keeping the housing halves parallel (i.e., equal gaps between housing halves on top and bottom).

**NOTE:** Tightening of the bolts should be completed in a circular pattern. When tightening with the torque wrench, start with the top bolt and only partially tighten the top bolt. Then, move to the second and third bolts (bottom bolts) and partially tighten to ensure an equal gap between housing halves. This should be repeated several times until the proper bolt torque is achieved based on the value in the table.

Clamp Range in (mm)	Bolt Torque
0.312 - 0.608 (7.9 - 15.5)	30 ft-lb (41 Nm)



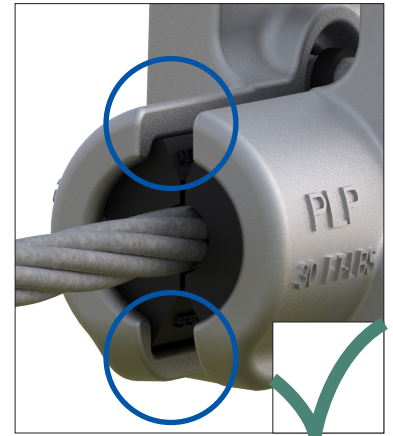
- 6 Recheck the bottom two bolts after torquing to ensure that they are properly tightened.

**CAUTION**

Failure to properly tighten all three bolts could result in gap noise between the cable and housing halves.

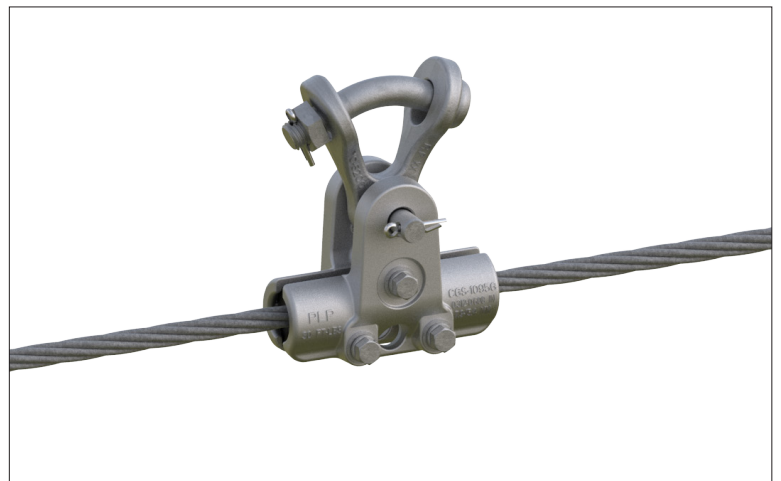


NOT evenly tightened bolts



Evenly tightened bolts

- 7 Completed application of the CUSHION-GRIP® Suspension. The work hole located on the bottom of the clamp has a maximum working load of 500 lb.





---

**GLOBAL HEADQUARTERS**  
660 BETA DRIVE  
CLEVELAND, OH 44143

+1 440 461 5200  
INFO@PLP.COM  
PLP.COM