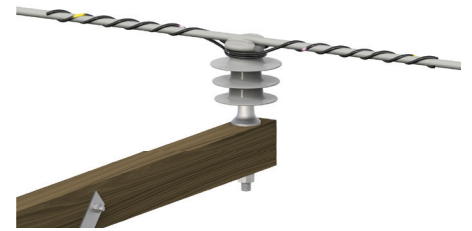




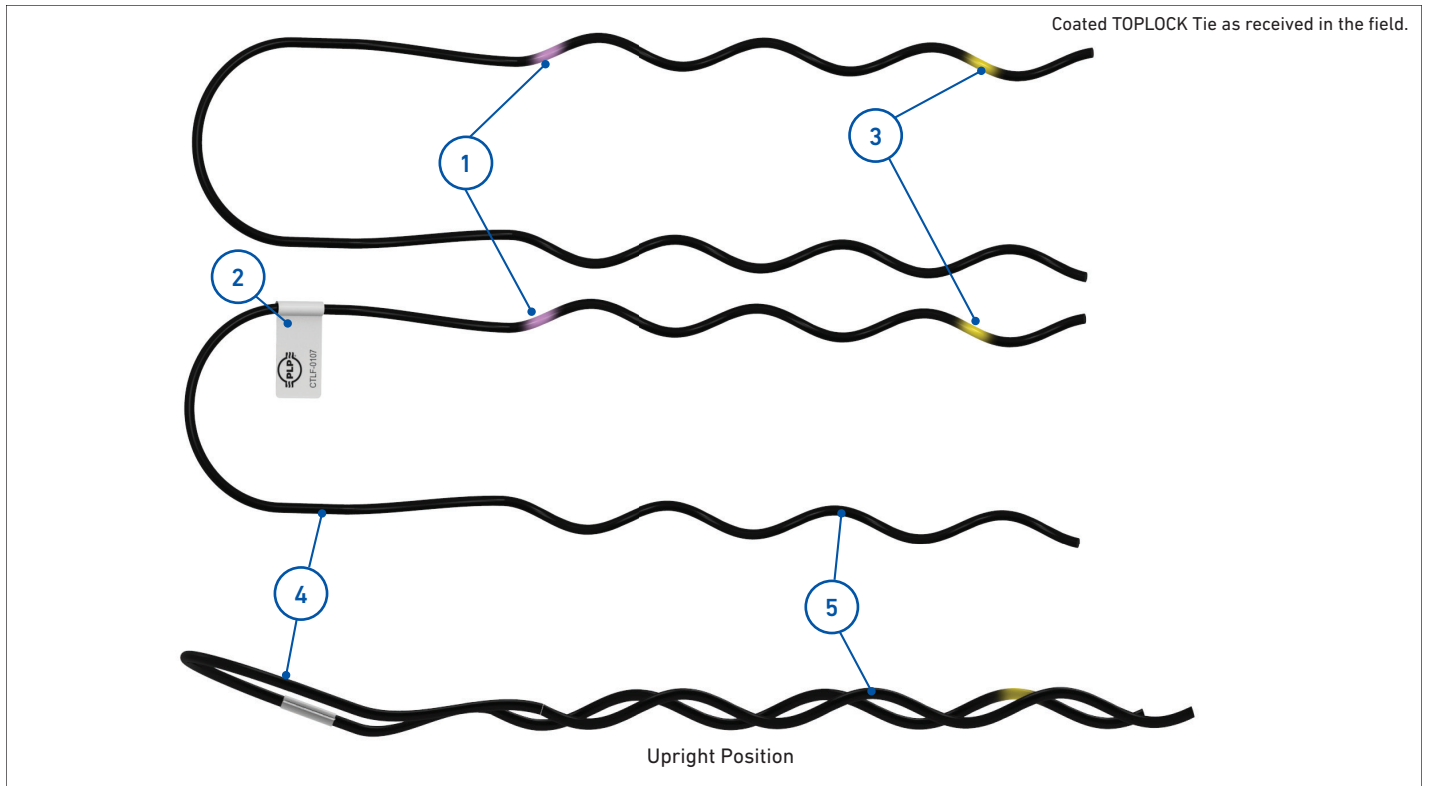
# COATED TOPLOCK™ TIE FOR JACKETED CONDUCTOR IN INSULATOR TOP GROOVE INSTALLATION INSTRUCTIONS



## IMPORTANT SAFETY INFORMATION

**READ AND COMPLETELY UNDERSTAND ALL INSTRUCTIONS BEFORE INSTALLING PRODUCT. FAILURE TO FOLLOW THESE INSTRUCTIONS MAY RESULT IN PERSONAL INJURY OR DEATH.**

This product is intended for use by trained technicians only. This product should not be used by anyone who is not familiar with and not trained to use it. When working in the area of energized lines, extra care should be taken to prevent accidental electrical contact. Be sure to wear proper safety equipment per your company protocol. These instructions are not intended to supersede any company construction or safety standards. These instructions are offered only to illustrate safe installation for the individual. PLP products are intended for the specified application only. Do not modify this product under any circumstances. Do not reuse or reinstall any PLP product unless that capability is expressly indicated in the product's Installation Instructions. For proper performance and personal safety, be sure to select the proper PLP product before installation. PLP products are precision devices. To ensure proper performance, they should be stored in cartons under cover and handled carefully.



1. Conductor Color Code
2. Identification Flag
3. Insulator Color Marks
4. Formed Center Section
5. Formed Legs

### Optional Tools for Hot Stick Installation:

- Universal Hot Stick
- Jumper Holding Tool or similar
- Applicator Ring Tool

## HAND APPLICATION

- 1 With the top of the tie in the upright position, install half of the Coated TOPLOCK Tie around the neck of the insulator. Slide it parallel to the conductor until the loop of the tie rests against the neck of the insulator.

**NOTE:** Both sections of the Coated TOPLOCK Tie are identical, and therefore can be applied in either direction on the conductor and around the insulator.



- 2 While pulling the loop tight to the insulator neck, begin wrapping the first leg at the conductor color code, as shown. Lift the leg up and over the conductor, it will naturally hook into place with minimal pressure.



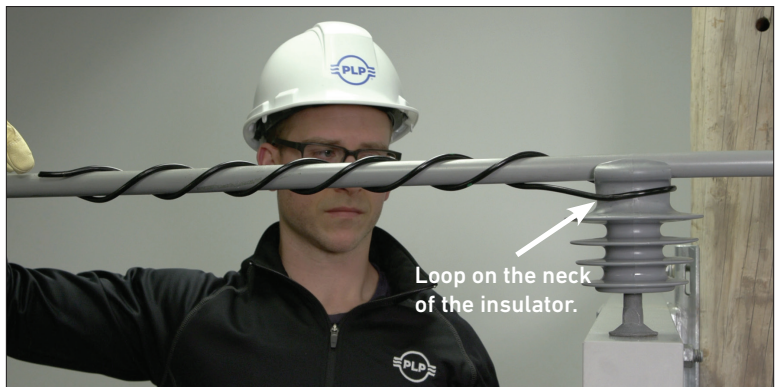
- 3 Continue wrapping the leg to completion, ensuring the end snaps securely into position by applying slight thumb pressure.



- 4 Wrap the other leg at the color code crossover mark and snap the leg into position in the same manner as shown.

### CAUTION

Ensure that the tie loop is tight on the insulator neck and under the insulator head.



- 5 Repeat Steps 1 - 4 to install the other half of the tie. Ensure the legs are snapped into position.

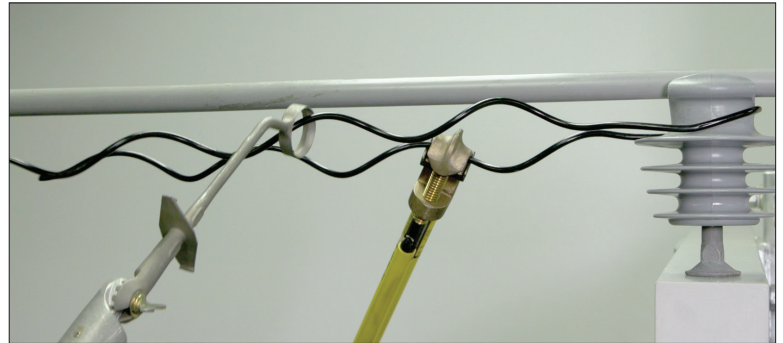


- 6 Completed application of the Coated TOPLOCK Tie.

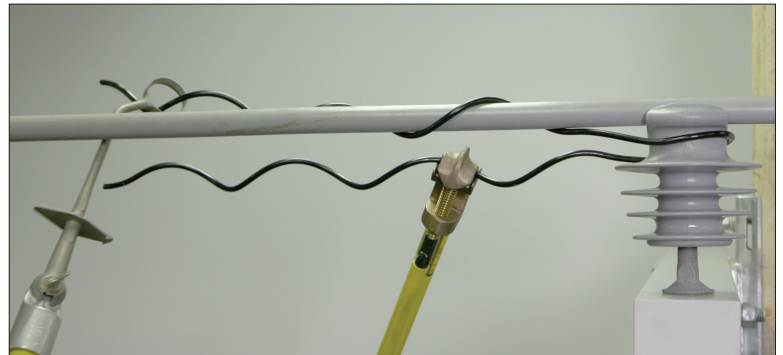


## HOT APPLICATION

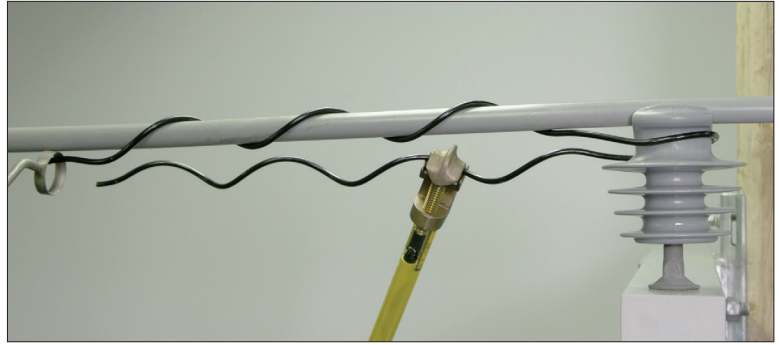
- 1 Using a jumper holding tool or similar, hold the tie in the upright position, install half of the Coated TOPLOCK Tie around the neck of the insulator. Slide it parallel to the conductor until the loop of the tie rests tightly against the neck of the insulator.



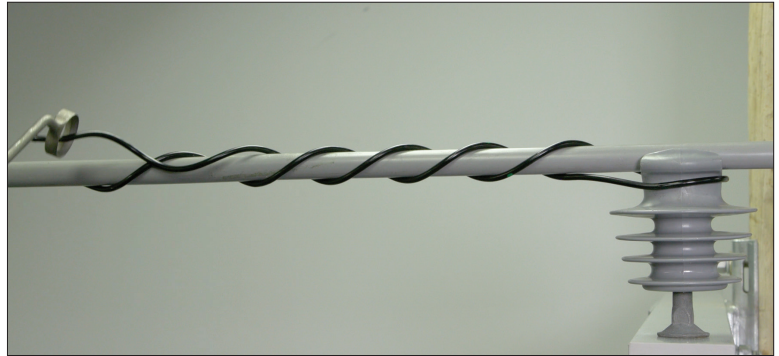
- 2 Using PLP's Applicator Ring Tool, begin wrapping the first leg at the color code crossover mark. Lift the leg up and over the conductor—it will naturally hook into place with minimal pressure.



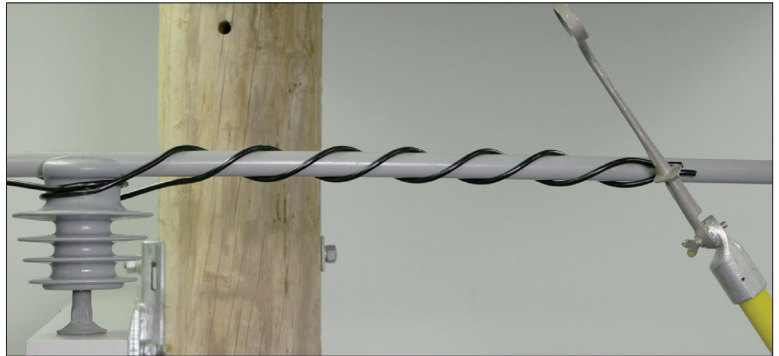
- 3** Continue wrapping the leg to completion, ensuring the end snaps securely into position by applying slight thumb pressure.



- 4** Release the jumper holding tool and wrap the other leg at the crossover mark as shown.



- 5** Repeat Steps 1 – 4 to install the other half of the tie and complete the installation. Ensure both legs snap securely into position.



- 6** Completed application of the Coated TOPLOCK Tie.

