

## COYOTE® 6.5" DOME CLOSURES WITH FIBERLIGN® CRB SYSTEM FOR OPGW

The **FIBERLIGN Cable Restraint Bracket (CRB) System** provides a secure method for retaining OPGW cables and maintaining a stable connection when mounting COYOTE Dome Closures directly to a tower structure, vertical cable storage bracket, or within the COYOTE Defender 2. The combination of the FIBERLIGN CRB System and the COYOTE Dome closure's patented segmented end plate design and versatile grommet sealing system make this product the ideal choice for OPGW splice applications.

### FEATURES AND BENEFITS

- CRB provides superior cable retention and torque resistance, along with electrical continuity
- The CRB's adjustable keepers allow for a wide range of OPGW cable diameters to be secured in COYOTE Dome Closures, eliminating the need for costly cable connectors and an abundance of inventory
- CRB keepers are knurled for increased retention of OPGW cables
- CRB is factory installed onto specified COYOTE Dome Closures kitted with the necessary materials for preparing, routing, and splicing two OPGW cables
- 6.5" Dome CRB one-piece design can secure two OPGW cables
- 6.5" Dome CRB provides access for future OPGW or ADSS cables to enter the top two ports of the end plate without disrupting secured OPGW cables
- The CRB is designed to easily attach to the SLACKLOOP® 60" Cable Storage through the included mounting adapter bracket within each kit

## SPECIFICATIONS

### 6.5" FIBERLIGN CRB System

Characteristic	Specification
Closure Sizes	6.5" x 17" and 6.5" x 22" COYOTE Dome Closures
Number of Restraints	2
Cable Range	0.375" – 0.750" (9.5 mm - 19.1 mm)

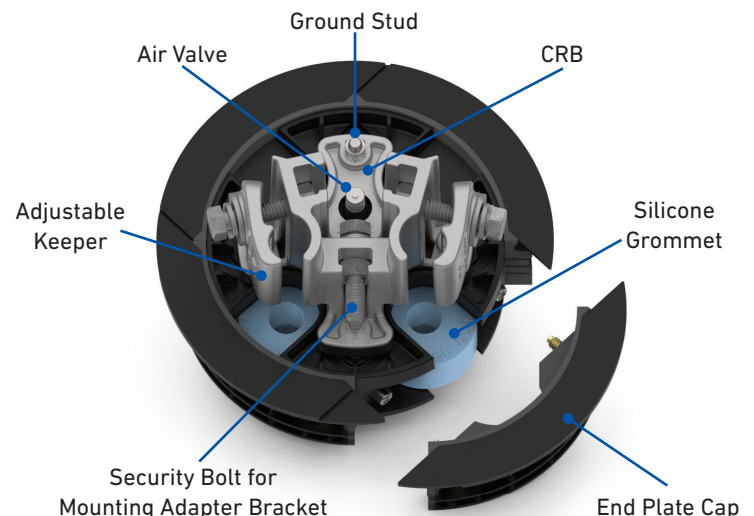
### 6.5" COYOTE Dome Closures

- Multi-hole grommets allow more than one cable to enter each cable port of the splice closures.
- Size of the splice closure is based on the outmost parts of the assembly including the sealing collar and the OPGW CRB.

Closure	6.5" x 17" Dome		6.5" x 22" Dome	
Buffer Tube Type	Plastic	Stainless Steel	Plastic	Stainless Steel
Catalog Number	COYW617P001	COYW617S001	COYW622P001	COYW622S001
Maximum Splice Tray Capacity	4 (Catalog Number: 80806033)		4 (Catalog Number: 80805514)	
Maximum Splice Capacity (Single Fusion)	48		144	
Cable Ports	4			
Cable Diameters (OPGW or ADSS)	0.30" – 0.75" (7.6 mm - 19.1 mm)			
Ground Studs	4			
Configuration	Butt			
Applications	Pole/Wall & Aerial			
Ingress Protection	IP-67			
Size	8.6" W x 20.9" L (218 mm x 529 mm)		8.6" W x 25.6" L (218 mm x 650 mm)	

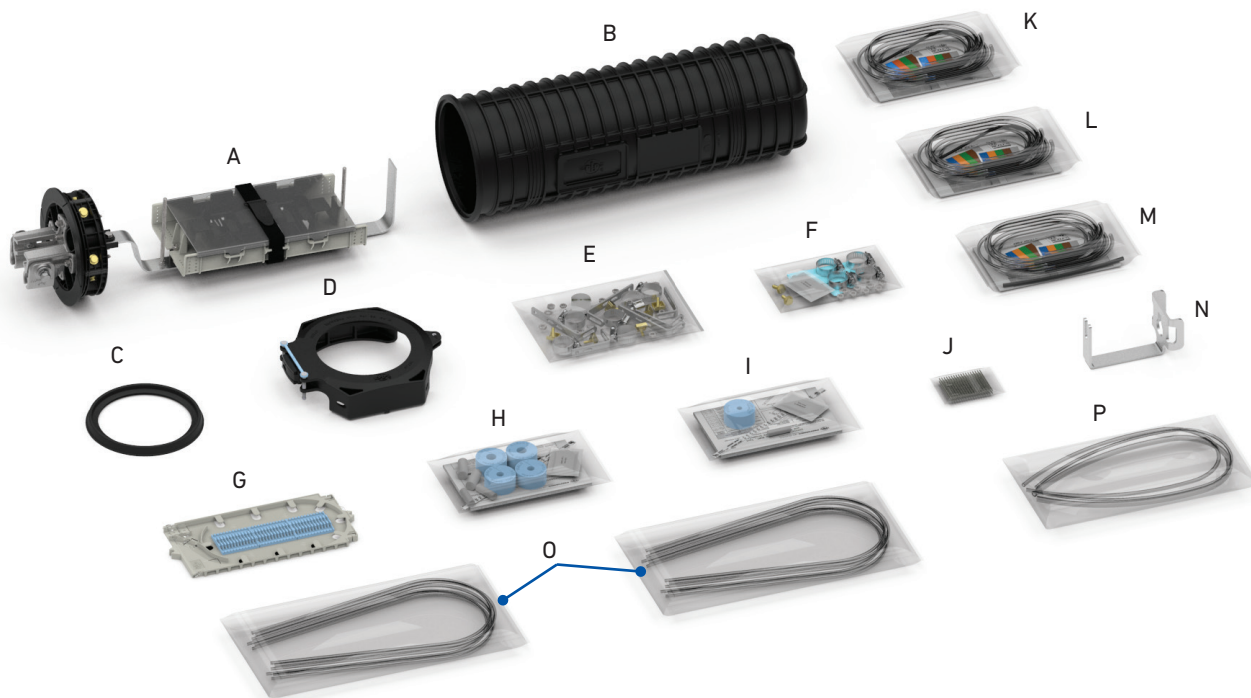
## CLOSURE END PLATE & CRB FEATURES

- PLP's patented segmented end plate system allows independent access to each cable port without disrupting surrounding cables.
- Sealing system created by the compression of the end plate caps against the COYOTE silicone grommets is designed to provide a secure seal around a variety of cable profiles.
- CRB secures two OPGW cables at the exterior face of the end plate while L-bracket cable restraint hardware secures cables and strength members at the interior face of the end plate.
- CRB connects all four ground studs of the end plate allowing all cables entering the closure to be bonded together through the use of the interior L-bracket cable restraint hardware.
- Captive security bolt of the CRB secures the mounting adapter bracket in place.





## COMPONENTS



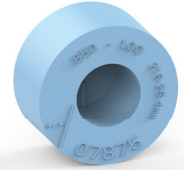
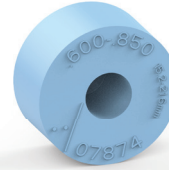
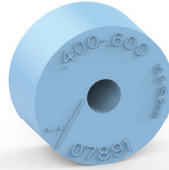
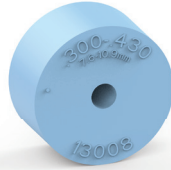
## 6.5" COYOTE Dome Closures with FIBERLIGN CRB System

Component	6.5" x 17" Dome Closure	6.5" x 22" Dome Closure
A	6.5" x 17" Dome Closure Plastic Buffer Tube Organizer or Stainless Steel Buffer Tube Organizer	6.5" x 22" Dome Closure Plastic Buffer Tube Organizer or Stainless Steel Buffer Tube Organizer (Shown Above)
B	6.5" x 17" Dome Cover	6.5" x 22" Dome Cover (Shown Above)
C	6.5" Dome End Plate Gasket	
D	6.5" Dome Collar	
E	OPGW Sealant and Interior Cable Restraint Bracket Kit	
F	Small Parts Bag	
G	COYOTE Legacy Short Standard Profile 12 CT. Splice Tray (Catalog Number: 80806033)	COYOTE Legacy Long Standard Profile 36 CT. Splice Tray (Catalog Number: 80805514) – Shown Above
H	Grommet Kit of (2) 1-Hole Grommets for 0.40" – 0.60" Cable Diameters (2) 1 Hole Grommets for 0.60" – 0.85" Cable Diameters	
I	1-Hole Grommet Kit for 0.30" – 0.43" Cable Diameters	
J	12 Pack of 60 mm Single-Fusion Heat Shrink Splice Protectors	36 Pack of 60 mm Single Fusion Heat Shrink Splice Protectors (Shown Above)
K	Transition Furcation Tube Kit for Stainless Steel Buffer Tube 0.102" – 0.110" (2.6 – 2.8 mm) OD Range	
L	Transition Furcation Tube Kit for Stainless Steel Buffer Tube 0.118" – 0.126" (3.0 – 3.2 mm) OD Range	
M	Transition Furcation Tube Kit for Stainless Steel Buffer Tube 0.133" – 0.154" (3.4 – 3.9 mm) OD Range	
N	Mounting Adapter Bracket for 6.5" OPGW CRB	
O	Transport Tubing Kit	
P	Transition Tubing Kit	

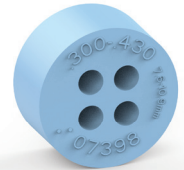
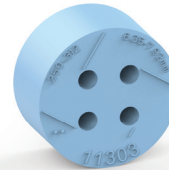
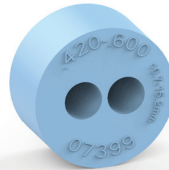
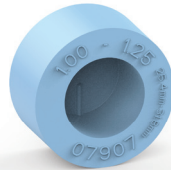
- Furcation kits, transition tubing kits, and transport tube kits are only included in closure kits for stainless steel buffer tube applications.

## ACCESSORIES

### Silicone Grommet Kits for COYOTE 6.5" Dome Closures

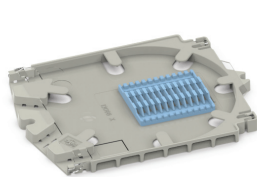


Catalog Number	8004151	8003691	8003692	8003693
in	0.30 – 0.43	0.40 – 0.60	0.60 – 0.85	0.85 – 1.00
mm	7.6 – 10.9	10.2 – 15.2	15.2 – 21.6	21.6 – 25.4

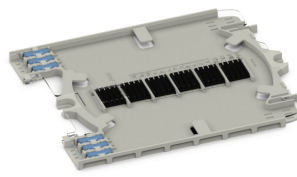


Catalog Number	8003694	8003663	8004065	8003664
in	1.00 – 1.25	0.42 – 0.60	0.250 – 0.312	0.30 – 0.43
mm	25.4 – 31.8	10.7 – 15.2	6.4 – 7.9	7.6 – 10.9

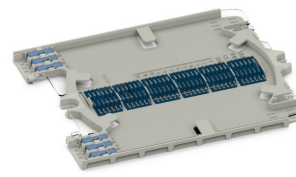
### Splice Tray Kits for 6.5" x 17" COYOTE Dome Closures



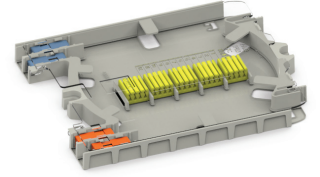
COYOTE Legacy Short  
Standard Profile 12 CT. Splice  
Tray for Single Fusion Splices  
(Catalog Number: 80806033)



COYOTE LITE-GRIP® Short  
Low Profile 24 CT. Splice Tray  
for Single Fusion Splices  
(Catalog Number: 80809958)

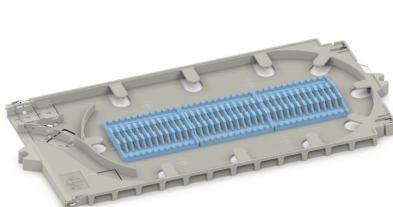


COYOTE LITE-GRIP® Short  
Low Profile 36 CT. Splice Tray  
for Single Fusion Splices  
(Catalog Number: 80813152)

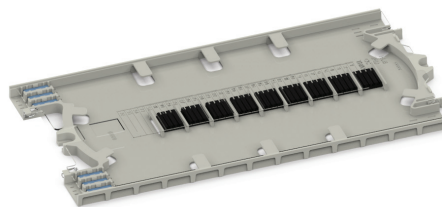


COYOTE LITE-GRIP® Short  
Deep Profile 40 CT. Splice Tray  
for Single Fusion Splices  
(Catalog Number: 80808945)

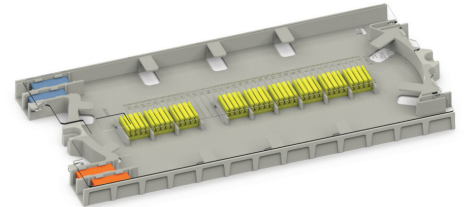
### Splice Tray Kits for 6.5" x 22" COYOTE Dome Closures



COYOTE Legacy Long  
Standard Profile 36 CT. Splice  
Tray for Single Fusion Splices  
(Catalog Number: 80805514)



COYOTE LITE-GRIP® Long  
Standard Profile 36 CT. Splice  
Tray for Single Fusion Splices  
(Catalog Number: 80810086)



COYOTE LITE-GRIP® Long  
Deep Profile 72 CT. Splice Tray  
for Single Fusion Splices  
(Catalog Number: LGSTS72)



## ACCESSORIES

### Installation Materials

Catalog Number	Description
800011212	Furcation Kit – Stainless Steel Buffer Tubes 0.133" – 0.154" OD
800011381	Furcation Kit – Stainless Steel Buffer Tubes 0.118" – 0.126" OD
800011382	Furcation Kit – Stainless Steel Buffer Tubes 0.102" – 0.110" OD
800011563	Furcation Kit – Stainless Steel Buffer Tubes 0.063" – 0.098" OD
80812321	CRB System OPGW Green Sealant Kit and Attachment Kit – Includes Long and Short Strength Member Brackets
8003509	Heat Shrink Splice Protector Kit – Includes (12) 60 mm Single Fusion
80811010	Heat Shrink Splice Protector Kit – Includes (36) 60 mm Single Fusion
8003280	Transition Tube Kit – Includes (1) 0.135" x 24.5" ID (3.4 mm x 622 mm), (1) 0.170" x 24.5" ID (6 4 mm x 22 mm), (1) 0.25" x 24.5" ID (6 mm x 622 mm) Long Transition Tubes
80805293	Transport Tube Kit – Includes (6) 0.135" x 34" ID (3.4 mm x 863 mm) Long Transport Tubes

## MOUNTING ACCESSORIES

- The Dome Halo Bracket is used to secure the top end of the dome closure when the closure is directly mounted to a pole/structure.
- The Lattice Tower Clamp Kit is used for mounting the 60" Fixed Crossarm Vertical SLACKLOOP® System or the Defender 2 directly to lattice towers with tower members up to 1-1/8" thick. Two lattice tower clamps are required for each installation.
- 5/8" through bolts, 5/8" double-arming bolts, and banding are not supplied with any of the kits listed below.

Catalog Number	Description
80812335	Dome Halo Bracket for 6.5" COYOTE Dome Closures with FIBERLIGN CRB System
80061195	60" Fixed Crossarm Vertical SLACKLOOP System
80061194	COYOTE Defender 2 for 6.5" COYOTE Dome Closures
LTC-1	Lattice Tower Clamp Kit with 6" Long Bolt



COYOTE 6.5"x17" Dome Closure with FIBERLIGN CRB System Mounted to Wood Pole with Mounting Adapter Bracket and Dome Halo Bracket



COYOTE 6.5"x22" Dome Closure with FIBERLIGN CRB System Mounted to Wood Pole with COYOTE Defender 2 and 60" Fixed Crossarm Vertical SLACKLOOP System



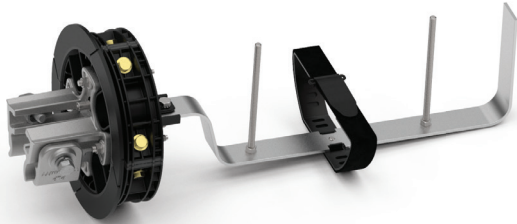
COYOTE 6.5"x22" Dome Closure with FIBERLIGN CRB System Mounted to Lattice Tower with 60" Fixed Crossarm Vertical SLACKLOOP System and Lattice Tower Clamps



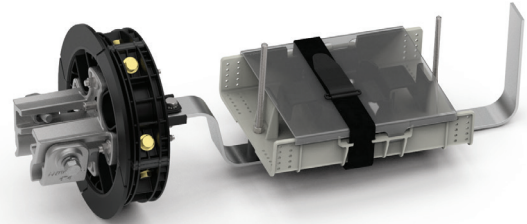
## ORDERING INFORMATION

- Select the appropriate catalog number from the tables below based on the OPGW fiber count and buffer tube type.
- 6.5" COYOTE Dome Closure Kits with the FIBERLIGN CRB System can be customized to include the appropriate grommet kit(s) and splice tray(s) required for specific cable diameters and splice quantities. Contact PLP for details.

### 6.5" x 17" COYOTE Dome Closure Kits with the FIBERLIGN CRB System



Plastic Buffer Tube Organizer  
(Catalog Number: COYW617P001)



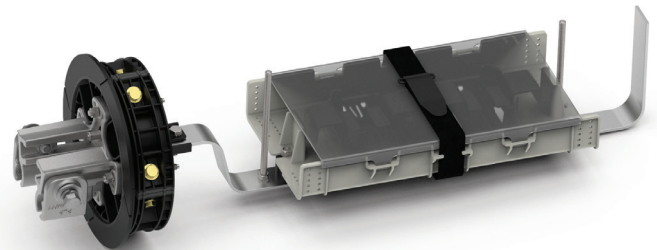
Stainless Steel Buffer Tube Organizer  
(Catalog Number: COYW617S001)

Catalog Number	Description
COYW617P001	COYOTE 6.5" x 17" Dome Closure with FIBERLIGN CRB System for Plastic Buffer Tube Application
COYW617S001	COYOTE 6.5" x 17" Dome Closure with FIBERLIGN CRB System for Stainless Steel Buffer Tube Applications

### 6.5" x 22" COYOTE Dome Closure Kits with the FIBERLIGN CRB System



Plastic Buffer Tube Organizer  
(Catalog Number: COYW622P001)



Stainless Steel Buffer Tube Organizer  
(Catalog Number: COYW622S001)

Catalog Number	Description
COYW622P001	COYOTE 6.5" x 22" Dome Closure with FIBERLIGN CRB System for Plastic Buffer Tube Application
COYW622S001	COYOTE 6.5" x 22" Dome Closure with FIBERLIGN CRB System for Stainless Steel Buffer Tube Applications